



# Articulated Flex Lance Safety Stop

## O&M Manual

Flex Lance Safety  
Stop with  
Tube Sheet Mount  
"Chicken Wing"  
Part #36-015-089



**ADVANCED PRESSURE SYSTEMS**

701 S. Persimmon St., Suite 85 - Tomball, TX 77375

Toll Free in North America: (877) 290-4277

Phone: (281) 290-9950 Fax: (281) 290-9952

E-mail orders: sales-team@waterblast.pro

**WWW.ADVANCEDPRESSURESYSTEMS.COM**

**WWW.WATERBLAST.PRO**

## The APS Team!



*Peter Goldsmith*  
President



*Fabian Villanueva*  
International Sales



*David Mitchell*  
Senior Vice President



*Johnny Matsoukas*  
La Porte, Branch Manager



*Kent Maddie*  
VP - Sales & Marketing



*Nick Ragan*  
Customer Service / Sales Rep



*Sheree Paramore*  
VP - Production & Inventory Control



*Kenny Kujawa*  
VP - Manufacturing

Since 2007, **APS** has manufactured a full line of high pressure water blasting equipment and accessories for numerous industries and applications, as well as consulting and engineering services. In addition to the following production items, APS provides a complete offering of replacement wear parts for pumps to a number of major manufacturers.

- 15 to 40K hand and foot control guns
- Flow divider and pressure regulating valves
- Nozzles and fittings
- Stock Parker & Spir Star flex lances and hoses
- Safety products
- StoneAge tools distributor

APS has a rigorous quality and machining process at the most comparable price in the industry.

Do you need a part for a particular application while still on the job? Look no further than APS's design and engineering services, coupled with our large inventory of stock, for a quick turnaround.

APS's customer service team gets APS referred! They are dedicated to you, knowledgeable and industry experienced, quick to respond, and thorough from your order to delivery. APS stands for Always Providing Service.

APS is the only solution to all your water blasting equipment requirements.

*Accessories - Control Guns - Fittings - Rigid Lances - Flex Lances - Hoses - Nozzles - Pump Parts*

[www.advancedpressuresystems.com](http://www.advancedpressuresystems.com)

Toll Free in North America: 1 (877) 290-4277 or (281) 290-9950



Part #	Description
36-015-089	Complete Chicken Wing

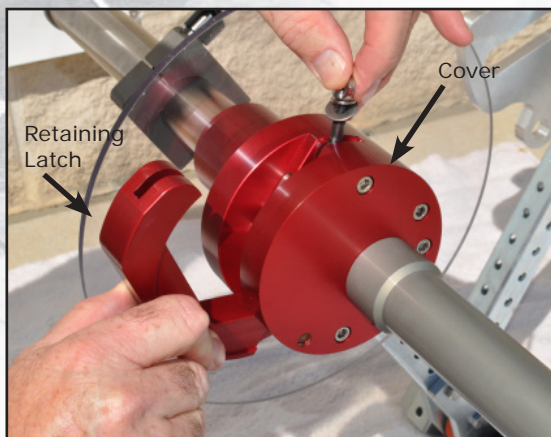
**Flex Lance Safety Device**  
(Also called a "Chicken Wing")

Clamps sold separately  
Part # 36-015-053



With safety as the primary consideration, the **Flex Lance Safety Device** was designed to protect the operator from a flex lance exiting a tube sheet during cleaning operations. It can easily be used for both vertical and horizontal applications and its wide range of adjustment will accommodate different sizes of tube sheets. Durable construction is of galvanized steel and anodized aluminum with a Lexan splash guard.

To change the stop size, unscrew the **Cover** and slide it clear of the device. This will allow the **Retaining Latch** to swing down (see **Fig. 1**), giving access to the **Lance Stop Insert**, which can be removed (see **Fig. 2**).



**Fig. 1**



**Fig. 2**

- Install the lance through the **Lance Guide Tube** and the **Lance Extension Tube**.
- Select the required size of the lance stop and reinstall the **Lance Stop Insert**.
- The size of the lance stop installed will be seen engraved on the Lance Stop Insert at the top of the opening.
- Close the **Retaining Latch** and replace the **Cover**.

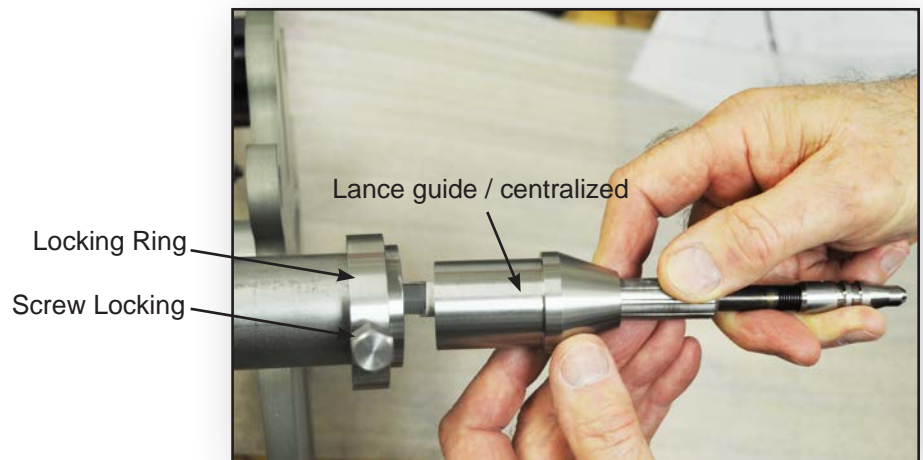
**Safety Check:** Test to assure that the lance end fitting and nozzle cannot be pulled out of the Safety Device before applying pressure to the flex lance.

# Installation of Lance guide / Centralizer



Part # 36-015-161	Flex Lance - Guide Bushing 0.625 I.D.
Part # 36-015-162	Flex Lance - Guide Bushing 0.750 I.D.
Part # 36-015-163	Flex Lance - Guide Bushing 0.437 I.D.

1.) Select the smallest diameter guide which allows the nozzle and lance to pass through freely.



2.) Check that the locking screw is sufficiently unscrewed to permit the lance guide to slide completely into the extension tube.



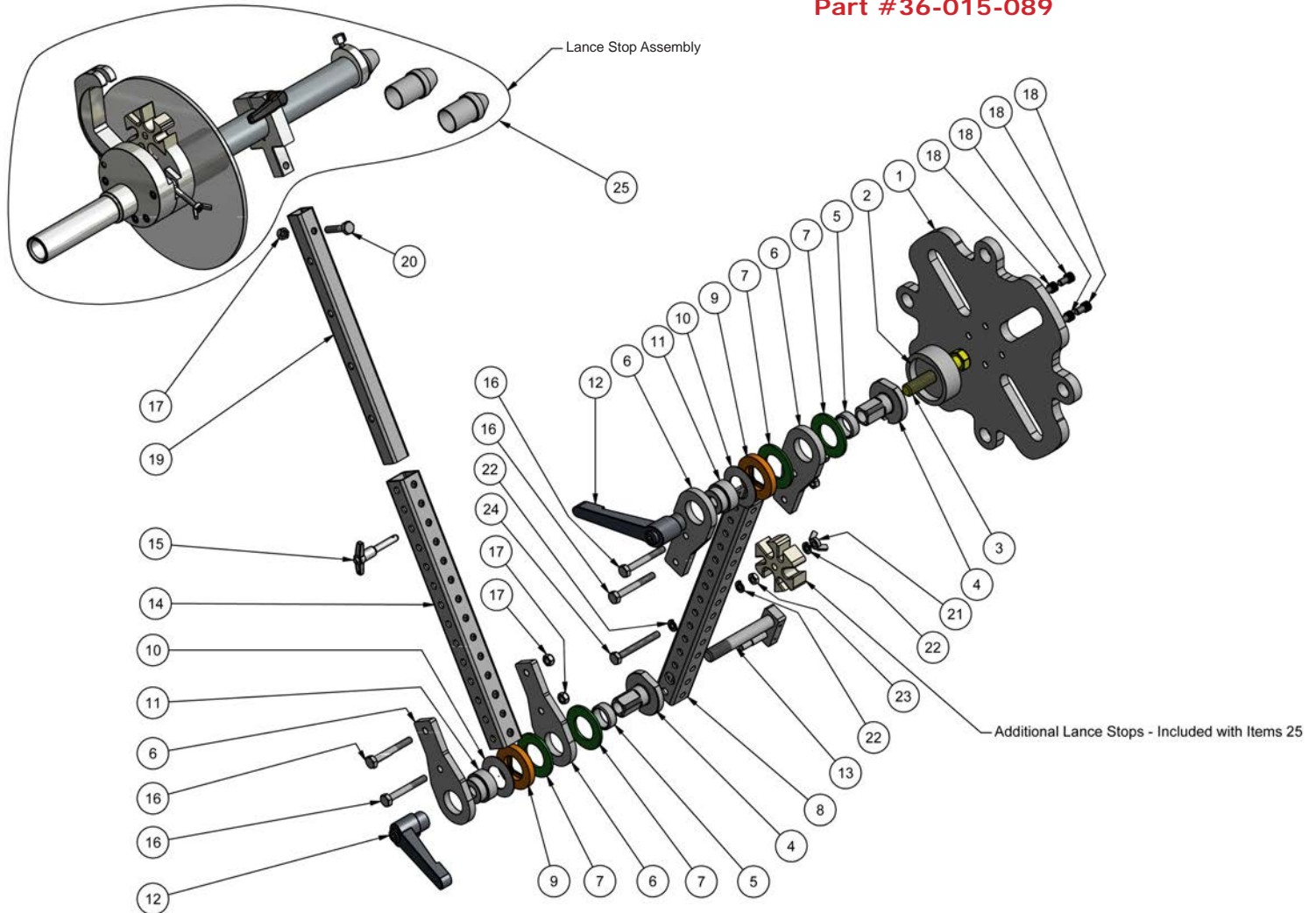
3.) Push the guide fully into the extension tube and secure it with the locking screw.



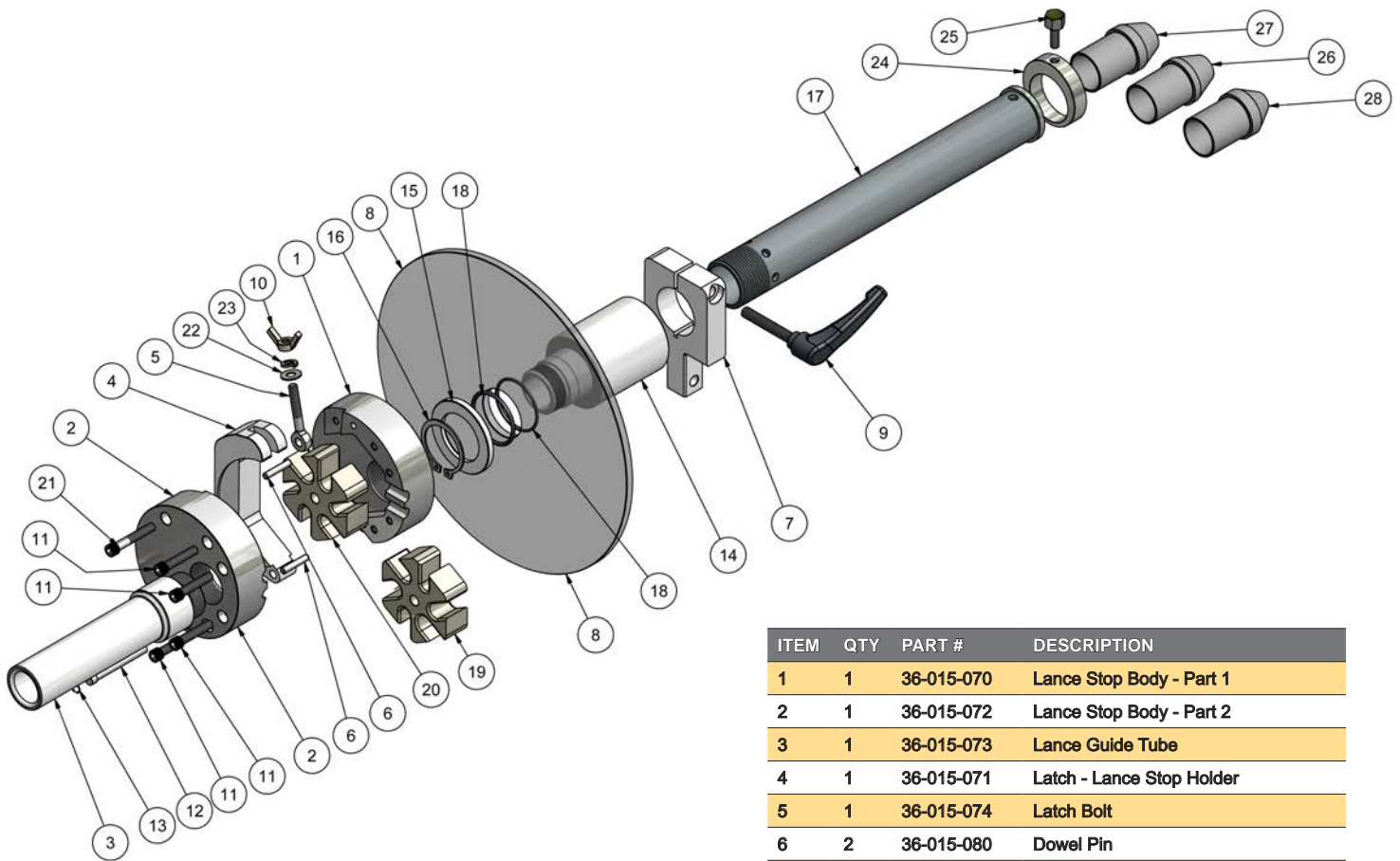
# CHICKEN WING (Articulated Flex-Lance Guide/Stop)

Current 2014 Chicken Wing design

Part #36-015-089



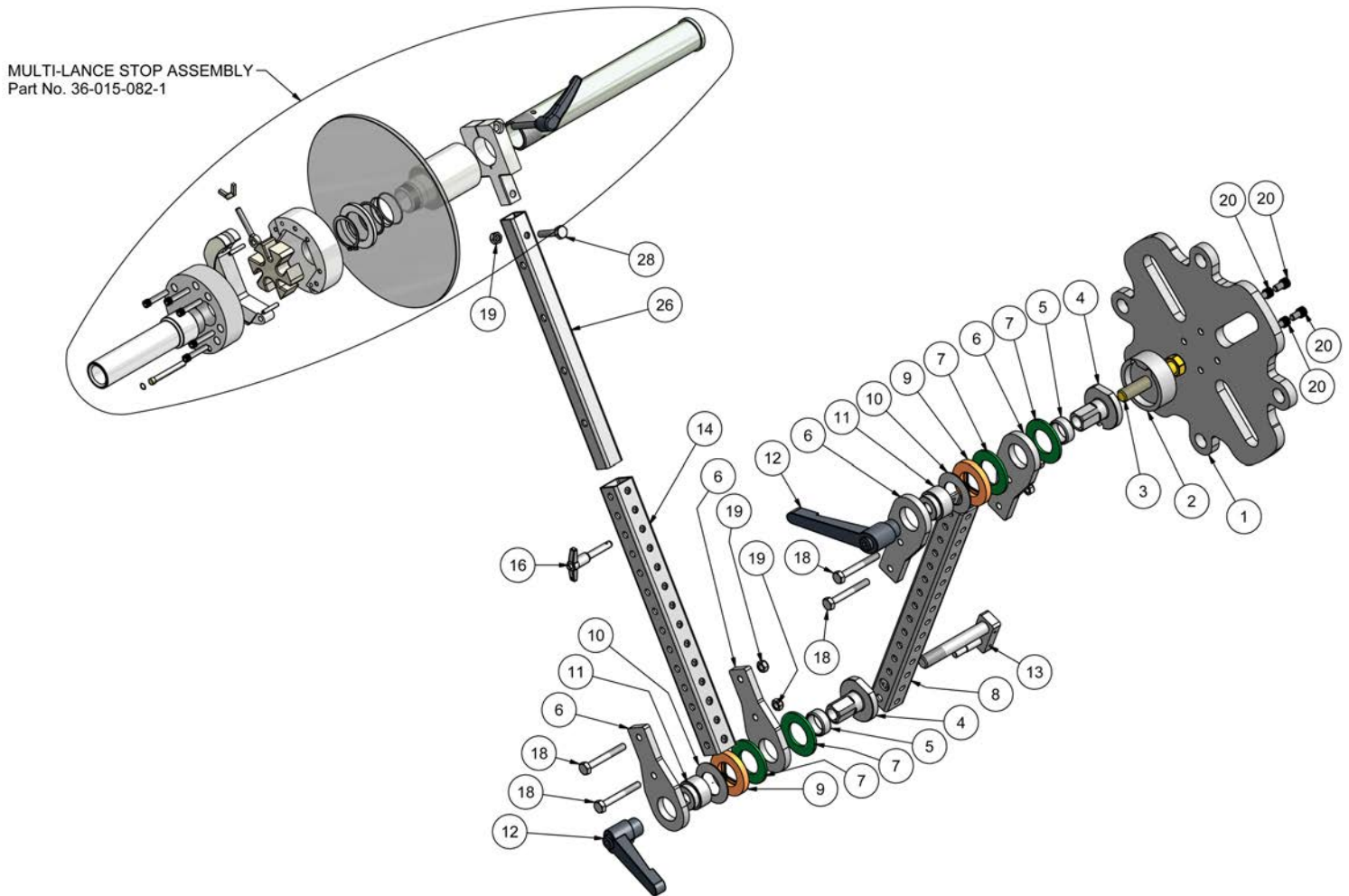
ITEM	QTY	PART #	DESCRIPTION
1	1	36-015-026	Chicken Wing Mounting Plate
2	1	36-015-025	Clutch Mounting Plate
3	1	10-121-325	Hex. Head Bolt 5/8"-11 x 3-1/4" long
4	2	36-015-046	Limiter - AWD Modified Torque
5	2	36-015-034	Bearing - Torque Limiter
6	4	36-015-016	Pivot Mounting Plate
7	4	36-015-033	Torque Limiter Fiber Washer
8	1	36-015-018.1	Telespar Arm
9	2	36-015-035	Torque Limiter Spacer (Orange)
10	2	36-015-032	Spring Washer
11	2	36-015-023	Spacer for Torque Limiter
12	2	36-015-028	Handle
13	1	36-015-068	Pivot Pin & Locking Plate Assembly
14	1	36-015-019	Telespar Arm
15	1	36-015-027	Extension Locking Pin
16	4	10-015-250	Hex. Head Bolt 5/16"-18 x 2-1/2" long
17	5	10-100-003	Nylon Lock Nut 5/16"-18 SS
18	4	10-002-050	SHCS 5/16"-18 x 1/2" long SS
19	1	36-015-088	Telespar Extension Arm
20	1	10-015-150	Hex. Head Bolt 5/16"-18 x 3" long
21	1	36-015-076	Wing Nut 5/16"-18 SS
22	3	10-020-002	Lock Washer 5/16" SS
23	1	10-100-006	Jam Hex. Nut 5/16"-18 SS
24	1	10-060-275	Hex. Head Bolt (full thread) 5/16"-18 x 2-3/4" long SS.
25	1	36-015-082-3	Multi Lance Stop Assembly



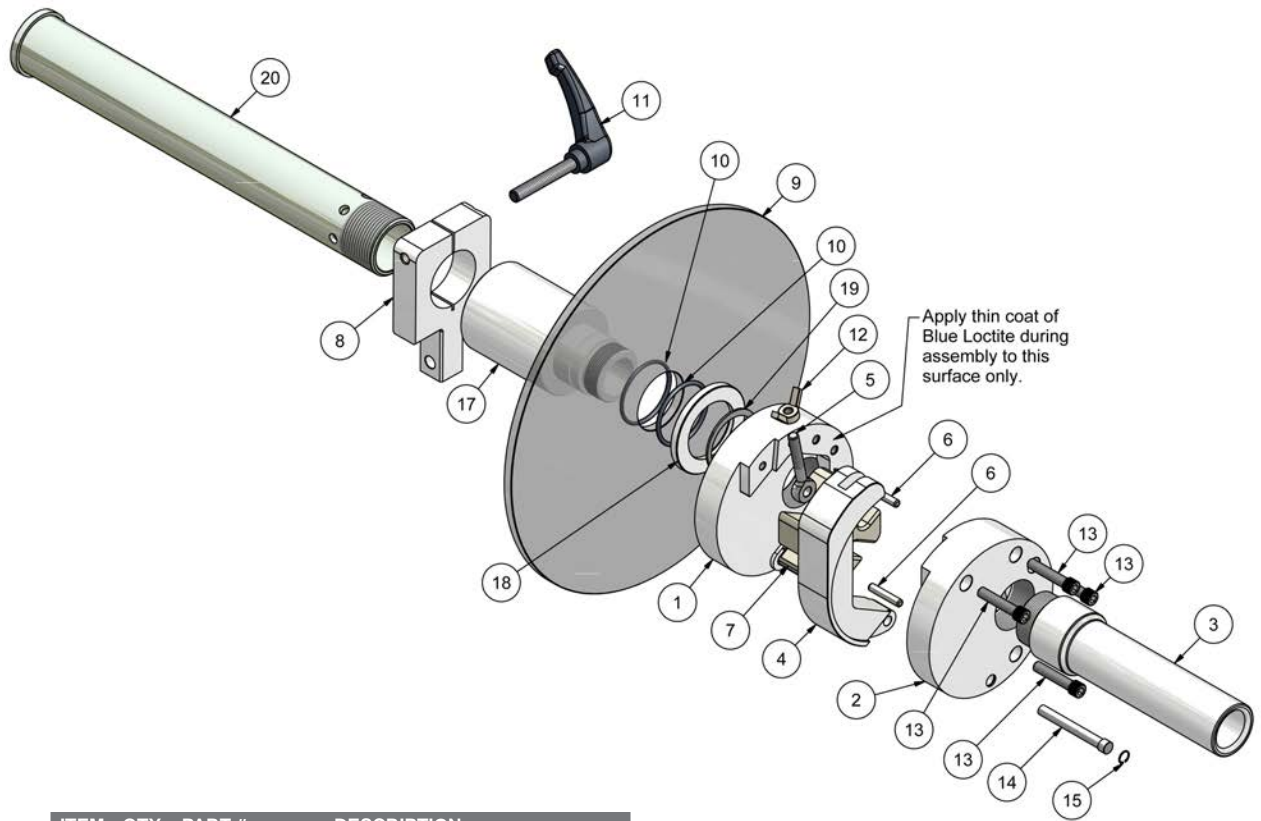
ITEM	QTY	PART #	DESCRIPTION
1	1	36-015-070	Lance Stop Body - Part 1
2	1	36-015-072	Lance Stop Body - Part 2
3	1	36-015-073	Lance Guide Tube
4	1	36-015-071	Latch - Lance Stop Holder
5	1	36-015-074	Latch Bolt
6	2	36-015-080	Dowel Pin
7	1	36-015-069	Clamp
8	1	36-015-044	Splash Shield (1.5" Size)
9	1	36-015-031	Handle
10	1	36-015-075	Wing Nut
11	4	10-001-125	SHCS 1-1/4" long
12	1	36-015-077	Latch Pivot Pin
13	1	10-022-031	Retaining Clip
14	1	36-015-081	Extension Tube Holder
15	1	36-015-084	Splash Shield Retaining Ring
16	1	10-024-150	Retaining Clip (5100-150) SS
17	1	36-015-087	Extension Tube
18	2	30-002-126	O-Ring Dur. 70
19	1	36-015-007.1	Lance Stop - Parker
20	1	36-015-007.2	Lance Stop - Spir Star
21	1	10-001-150	SHCS 1-1/2" long
22	1	10-010-003	Flat washer
23	1	10-020-001	Lock washer
24	1	36-015-159	Retaining Ring - Guide Bushing
25	1	36-015-160	Hex. Head Thumb Screw
26	1	36-015-161	Flex Lance - Guide Bushing 0.625 I.D.
27	1	36-015-162	Flex Lance - Guide Bushing 0.750 I.D.
28	1	36-015-163	Flex Lance - Guide Bushing 0.437 I.D.

# Flex Lance Safety Device “Chicken Wing”

Prior to December 2013 Chicken Wing design



ITEM	QTY	PART #	DESCRIPTION
1	1	36-015-026	Chicken Wing Mounting Plate
2	1	36-015-025	Clutch Mounting Plate
3	1	10-121-350	Hex. Head Bolt 5/8"-11 x 3-1/2" long
4	2	36-015-046	Limiter - AWD Modified Torque
5	2	36-015-034	Bearing - Torque Limiter
6	4	36-015-016	Pivot Mounting Plate
7	4	36-015-033	Torque Limiter Fiber Washer
8	1	36-015-018	Telespar Arm
9	2	36-015-035	Torque Limiter Spacer (Orange)
10	2	36-015-032	Spring Washer
11	2	36-015-023	Spacer for Torque Limiter
12	2	36-015-028	Handle
13	1	36-015-068	Pivot Pin & Locking Plate Assembly
14	1	36-015-019	Telespar Arm
16	1	36-015-027	Extension Locking Pin
18	4	10-015-250	Hex. Head Bolt 5/16"-18 x 2-1/2" long
19	5	10-100-003	Nylon Lock Nut 5/16"-18 SS
20	4	10-002-050	SHCS 5/16"-18 x 1/2" long SS
26	1	36-015-088	New Telespar Extension Arm
27	1	36-015-082-1	Multi-Lance Stop Assembly
28	1	10-015-150	Hex. Head Bolt 5/16"-18 x 1-1/2" long



ITEM	QTY	PART #	DESCRIPTION
1	1	36-015-070	Lance Stop Body - Part 1
2	1	36-015-072	Lance Stop Body - Part 2
3	1	36-015-073	Lance Guide Tube
4	1	36-015-071	Latch - Lance Stop Holder
5	1	36-015-074	Latch Bolt
6	2	36-015-080	Dowel Pin
7	1	36-015-007	Lance Stop Insert
8	1	36-015-069	Clamp (new Style)
9	1	36-015-044	Splash Shield (1.5" Size)
10	2	30-002-126	O-Ring
11	1	36-015-031	Handle
12	1	36-015-075	Wing Nut
13	5	10-001-125	SHCS 1-1/4" long SS
14	1	36-015-077	Latch Pivot Pin
15	1	36-015-078	Retaining Clip
17	1	36-015-081	Extension Tube Holder
18	1	36-015-084	Splash Shield Retaining Ring
19	1	10-024-150	Retaining Clip (5100-150) SS
20	1	36-015-087	Extension Tube



# YOU ARE RESPONSIBLE FOR SAFETY!

Advanced Pressure Systems publishes guides for the safe use of Water Blasting Equipment.

## Please READ them!

We also strongly advise that all personnel are fully conversant with:

***"Recommended Practices for the Use of Manually Operated High Pressure Water Jetting Equipment"***

published by the Water Jet Technology Association.



These may be obtained free of charge by contacting:  
**ADVANCED PRESSURE SYSTEMS, L.P. (877) 290-4277**

## Conditions of Sale & Warranty

**General** - These terms and conditions and warranty provisions are applicable to all products contained in this catalog, and may not be varied, except in writing by a partner of APS Pressure Systems L.P.

### Terms of Sale –

- 1) All sales are FOB manufacturers plant, Houston, Texas, and are priced and must be paid for in US dollars.
- 2) The purchaser agrees to hold APS Pressure Systems (DBA: Advanced Pressure Systems) harmless for any and all claims arising from the misuse or misapplication of any product manufactured or supplied by Advanced Pressure Systems.
- 3) Products returned for credit will be subject to 15% restocking charge. Only standard products will be accepted for restocking. All sales of non-standard items are final.
- 4) Payment may be made by credit cards issued by VISA or MASTERCARD. Payment by credit cards issued by AMERICAN EXPRESS will be subject to 3% service charge.

**Warranty** - The following classes of products carry the warranty indicated. Any component included in an assembled product which is subject to wear is not warranted. Products which have been subject to abuse including misapplication, corrosion, excessive pressure, over-tightening and galling of screw threads will not be accepted for replacement under warranty. Products not manufactured by Advanced Pressure Systems will carry the warranty by of the respective manufacturer

**Hose** - Not warranted. Coupling may be warranted by manufacturer.

**Rigid Lances** - Ninety days from date of shipment.

**Plungers and Pump Packing** - Not warranted.

**Control Guns, Flow Divider Valves, Flow Control Valves** - Ninety days from date of shipment.

**Relief Valves** - 180 days from date of shipment.

**Nozzles and nozzle inserts / orifices** - Not warranted

**Fittings, Connectors and Couplings** - 180 days from date of shipment.

**Shipping Costs** - Orders may be shipped prepaid by any regularly available means, and the cost will be paid by the customer. Other shipping costs including but not limited to: insurance for the full retail value of the products, packaging, crating and any other handling costs will be billed to the customer. If the customer collects the products from the Houston plant there will not be any shipping charges.

**Payment** - All invoices are due net 30 days from date of shipment. Any invoices which are more than 30 days past due will result in the account of the customer concerned to be placed on hold.

*Your Water Blasting Parts  
and Accessories Specialists!*



**ADVANCED PRESSURE SYSTEMS**



***Parts & Accessories Specialists***

**ADVANCED PRESSURE SYSTEMS**

701 S. Persimmon St., Suite 85 - Tomball, TX 77375

Toll Free in North America: (877) 290-4277

Phone: (281) 290-9950 Fax: (281) 290-9952

E-mail orders: [sales-team@waterblast.pro](mailto:sales-team@waterblast.pro)

**[WWW.ADVANCEDPRESSURESYSTEMS.COM](http://WWW.ADVANCEDPRESSURESYSTEMS.COM)**

**[WWW.WATERBLAST.PRO](http://WWW.WATERBLAST.PRO)**