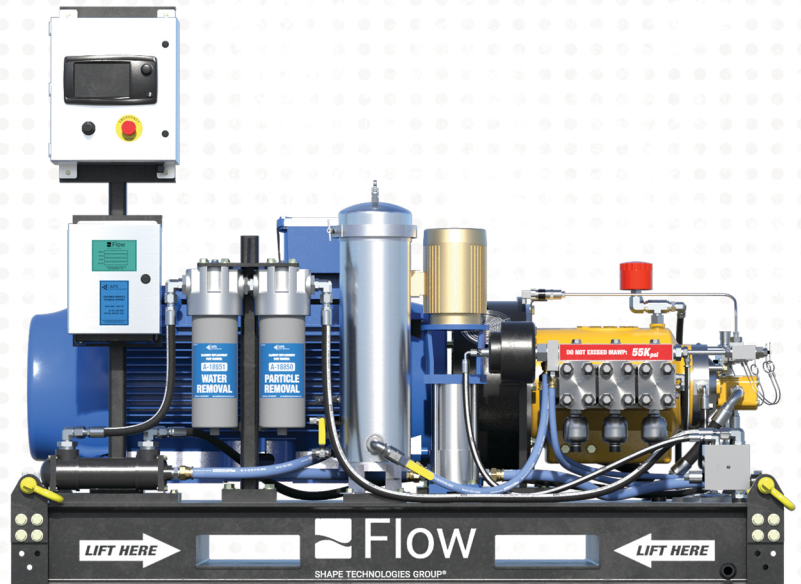


E-HUSKY

with External Compensation

**Our HUSKY pumps are compatible with all other Flow accessories, so no additional investments are necessary to upgrade.*



The industry's most reliable & productive waterjet pump

Maximum Productivity Lower Cost of Operation

Maximum productivity and low operational costs are key components to keep your business competitive. Designed for power and built to last, Flow's 40,000 psi & 55,000 psi HUSKY pumps will exceed your expectations. With up to 55,000 psi our HUSKY pump has set the new industry standard for both productivity and reliability, providing you with a portable ultra-high pressure waterjet pump that offers the highest pressures available.

We are committed to innovating reliable pumps that improve your bottom line. The HUSKY is the world's first 55K direct drive triplex pump with full pressure compensation giving you the power you need to reduce your operating costs and increase productivity on a square foot basis.

Flow's proven HUSKY UHP pump is combined with a world class Electric motor, which offers cost and operational advantages over diesel driven units.

Innovation To Improve Productivity

Flow manufactures the most complete range of ultra-high pressure waterjet pumps in the industry, so you can be confident your HUSKY pump is the most technologically advanced pump available.

The pump's Operator Control System allows you to work remotely without having to directly attend to the machine, so you can focus on other tasks. Flow's HUSKY pumps perform system troubleshooting by monitoring for inlet water pressure, high engine or pump temperatures, and low engine or pump oil pressure. Our pumps protect themselves by automatically shutting down the system and relieving system water pressure to 0 psi within a second of shutdown if needed.

Flow's HUSKY pumps are also equipped with diagnostic sensors that assist with troubleshooting and preventative maintenance. These sensors check and alert you of any problems that may arise. The result... lower operating costs and increased up-time.

Specifications

Operating Power	40,000 psi (2,720 bar) & 55,000 psi (3,792 bar)
Maximum Flow Rate	6.5 gpm (24.5 lpm)
Approximate Weight	5,000 lbs. (2,268 kg)
Voltage	380 / 460 VAC
Motor	200 hp Weg
Nozzle Horsepower	Continuous Duty - 40K: 152 nhp / 55K: 208 nhp
Speed	2,100 rpm Continuous Duty *when paired with VFD
Water Filtration	10 Micron Absolute
Mount Type	Skid



Benefits

Maximum productivity up to 55,000 psi, the highest pressure available in the industry.

Lower cost of operation gives contractors a competitive advantage.

Compatible with all existing Flow Industrial Cleaning products

Latest technology from Flow ensures you the easiest to use, most reliable pump in the industry

Standard Features

Automated settings for multiple tool operation

Diagnostic sensors to assist with troubleshooting and preventative maintenance

Nema Premium efficiency electric motor

On-board water boost and filtration system

Full pressure compensation allows for multiple tool use

Triple high pressure outlet ports

Updated GUI for the operator control panel

48" X 85" Package footprint

