

#11500

THE OTHER CORNER CAFE



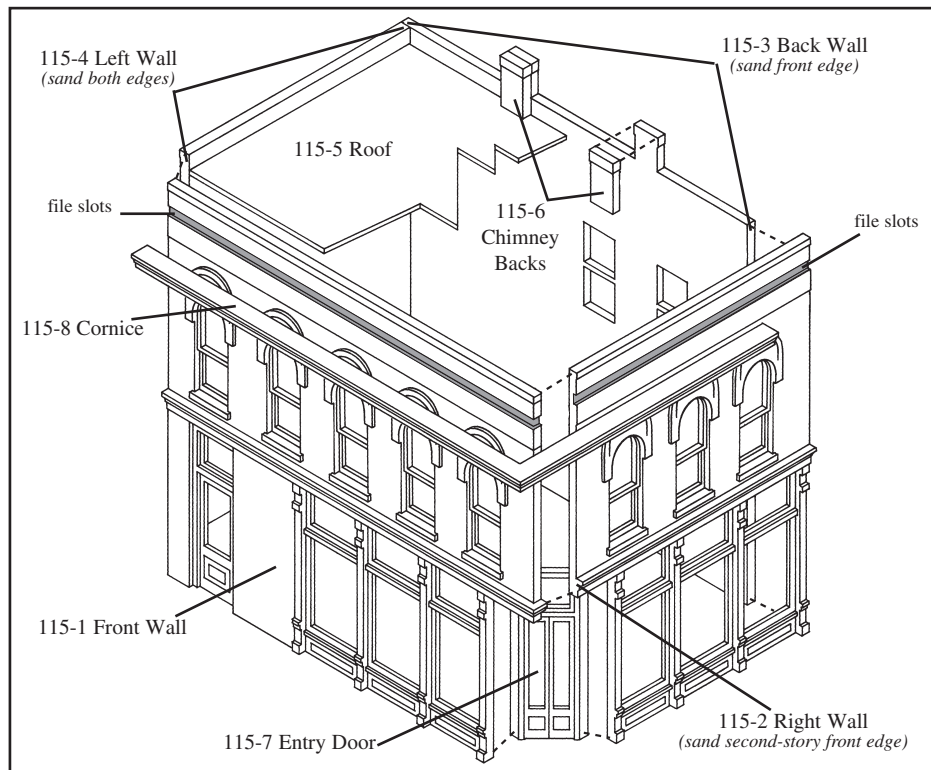
Follow the enclosed HO scale General Instructions. The General Instructions refer to the drawings and instructions included with this kit. Read through instructions before beginning construction.

Chimney Backs

Sand bottom edge of Chimney Backs (115-6) flat. Sand smooth side of Chimney Back and molded-in Chimney front so they fit flush. Glue together and let dry. When dry, sand top of Chimney flat.

Cornice

The Cornice (115-8) fits into slots on Walls (115-1) and (115-2). For Cornice to fit properly, file right edge of slot on Front Wall (115-1) to match left edge on Right Wall (115-2). Test fit Cornice and verify brick courses line up. When happy with fit, glue Front Wall (115-1) and Right Wall (115-2). When glue is set, glue Cornice in place.



This item is not a Children's Product and is not intended for use by Children.



Made in USA E9 ©1994 O CO

WOODLAND SCENICS® PO Box 98, Linn Creek, MO 65052 • woodlandscenics.com

This item is not a Children's Product and is not intended for use by Children.

CAUTION: Cutting tools recommended. Use with care.

MODELING AND CARE INFORMATION: This kit suggests the use of materials that may stain or cause damage. Take care to cover project area and clothing appropriately. Follow recommendations for use and clean up.

Modeling Supplies Needed: Hobby Knife, Plastic Cement, 120-grit Sandpaper, Primer, Model Paints (acrylic or enamel), Painting Tools, Rubber Bands, Scissors, Ruler, Black Construction Paper, Squaring Block, Roof and Trim Kit (#30190), Dry Transfer Decals.

General Instructions

DPM® #100 and #200 Series HO Scale Kits

Read through instructions before beginning. Check kit contents. Collect additional needed supplies. Cover project area with newspaper. The **General Instructions** are the basic building techniques used to construct HO DPM Building Kits. Refer to individual Kit Instructions located on back of full-color package insert for part numbers and placement and information specific to your kit.

How to Attach Parts

Use plastic cement to glue parts. Plastic cement works by dissolving the surface of plastic and welding parts together. Be careful to avoid contact with building detail and visible areas on Clear Window Material. Allow glue to set 1-2 minutes between construction steps.

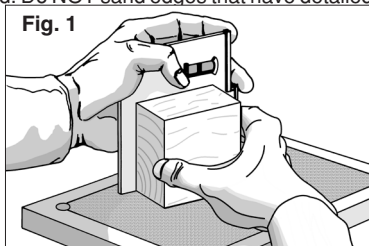
Remove Tabs and Flash

Wash parts in warm, soapy water using a mild detergent. Rinse and let dry. Use a hobby knife and sandpaper to remove excess plastic (tabs and flash) that occurred during the molding process. **Tab:** Score (flush with part), snap off and sand smooth. **Flash:** Lightly scrape along edges to remove debris and sand smooth. **Sprue:** If kit has parts on a sprue, remove by scoring with a hobby knife (flush with part) and snapping off. Sand any parting lines and mold flash. Keep parts on sprue until ready to use.

Prepare Walls

Due to the molding process, some walls have beveled edges. Beveled edges need to be removed for walls to set flush and square. Sand beveled edges with 100-grit sandpaper. Kit Instructions (located on back of full-color package insert) specify which wall edges to sand. Do NOT sand edges that have detailed brickwork, unless specified. To avoid rounded edges, sand wall on a flat surface, applying even pressure.

TIP! Tack sandpaper to a flat surface, and use a "squaring block" with a 90° angle. Hold squaring block in place while sanding walls. Do not sand into detail. (Fig. 1)



Assemble Building

Refer to the exploded view shown on Kit Instructions for wall placement and building assembly.

Begin by gluing two walls together to form a corner (example: Front Wall [1] to Right Side Wall [2]). Apply glue along the undetailed (sanded) wall edge, attaching it to the backside of detailed wall. Detail should remain visible. A squaring block is helpful for assembly. Try to line-up brickwork on adjacent walls, while keeping bottoms as level as possible. Allow glue to set before attaching next wall. Glue remaining walls together in this same manner.

TIP: Once building is assembled, use rubber bands to hold in place until set.

Entry Doors

Refer to Kit Instructions for specifics on Entry Doors. Styles of Entry Doors differ and include: Molded as part of Front Wall, Corner Entry Door and Recessed Entry Door with Side Panels.

Types of Side Panels include: Molded Side Panels or styrene Side Panel Material*.

*To make entry door side panels with styrene Side Panel Material, cut styrene strips approx. 1/4" wide and equal with height of Entry Door. Mark height on styrene strip, score with a hobby knife and snap off. Glue to Entry Door at a slight outward angle. Check fit with Front Wall (1) while glue is flexible. Glue Entry Door assembly to Front Wall (1).

Option: Some Recessed Entry Doors can be glued flush with Front Wall. See individual kit for specifications.

Prepare Chimney or Install Chimney Backs

Refer to the Kit Instructions for information on Chimney type and proper assembly.

Molded Chimney: Glue Chimney Back(s) to molded Chimney Front(s).

One Piece Chimney: Sand Chimney Halves smooth so they fit flush, and glue together. When dry, sand top and bottom level, if necessary.

Prepare Roof

Refer to the Kit Instructions for any special directions on Roof installation.

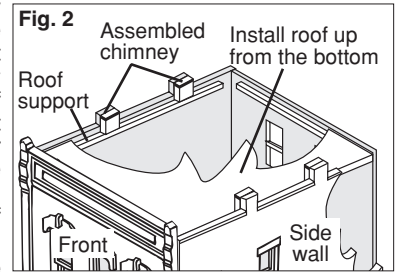
If no special instructions are given, proceed as follows. Measure the inside dimension of roof opening(s). Transfer measurements to a piece of cardstock, cardboard, etc., cut out and test fit on building. Make adjustments as needed. Once you have achieved a good fit, transfer dimensions to Styrene Plastic Sheet (white roofing sheet). Cut out using a hobby knife and a ruler. Test fit and make any adjustments. Paint Roof flat black, if desired. Glue in place according to your Chimney type (see below).

Install Roof

The Roof will be installed according to Chimney type.

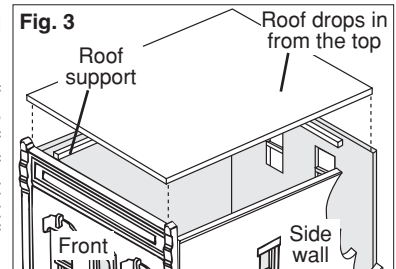
Molded Chimney with Chimney Back:

Insert the Roof from the underside of building, gluing it to the bottom of the chimney back(s). Using the included Roof Support Material, cut support strips. Supports should be shorter than the width of the walls. Glue Supports to set flush on each wall and underside of Roof (where Roof and Wall meet). (Fig. 2)



One Piece Chimney:

Using the included Roof Support Material, cut roof supports. Supports should be shorter than the width of walls. Glue Supports so they are even with the Supports on other walls. If the walls are different heights, be sure the Roof sets below the top of the lowest wall. Generally, the Roof Supports should be glued about 1/8" below the top of the lowest wall. Glue the Roof to the top of Roof Supports. (Fig. 3)



Install One Piece Chimney (if applicable)

Glue assembled Chimney to top of Roof in desired location.

Leveling

After assembled building is set and glue is completely dry, carefully sand bottom of building until level. Sand on a flat, level surface, applying even pressure. Do not sand brick detail.

Painting Tips and Techniques

Colors are your choice, but we recommend natural brick colors such as rust, tan or other earth tones. Paint door and window trim the same color as the brick or a contrasting color.

Prime Apply a thin coat of primer before painting.

Airbrush or Hand-brush Use flat finish, acrylic or enamel paint

Aerosol Use flat finish spray paint

Interior Lighting If lighting building, reduce interior glare by painting interior walls and underside of roof flat black.

Weathering Techniques

Weathering or Mortar Wash Using a paintbrush, dab on small amounts of wash (formula follows) until desired look is achieved. Sponge off excess.

Formula Mix 1-part acrylic paint (color suggestion: complimentary earth-tone shade), 12-parts rubbing alcohol, 8-parts water and 1 drop liquid dish soap.

Airbrush Lightly spray thinned flat black paint (color suggestion: grimy black) to areas where natural discoloration can occur (near windows, chimneys, etc.).

Chalk Rub a dark color of pastel chalk (color suggestion: gray, black, brown, etc.) on sandpaper to create a chalk dust. Using a paintbrush, dab chalk dust where discoloration can occur.

Install Window Material

Cut Clear Window Material to fit over windows on inside of building. Window installation is easier when material is installed over sections of windows.

Place the building on its front face, center window material over window(s) and carefully dab a small amount of glue around edges of window material. Do not let glue get on visible area of window material. Repeat for each set of window openings.

Finishing Touches

Insert black construction paper diagonally (corner to corner) on inside of building to give the appearance of occupation. Place a drop of glue at each corner of paper to hold in place.

Detail the Roof by adding vents and hatches from the Roof and Trim Kit (#30190).

Enhance your building with Dry Transfer Decals for windows and wall signs.