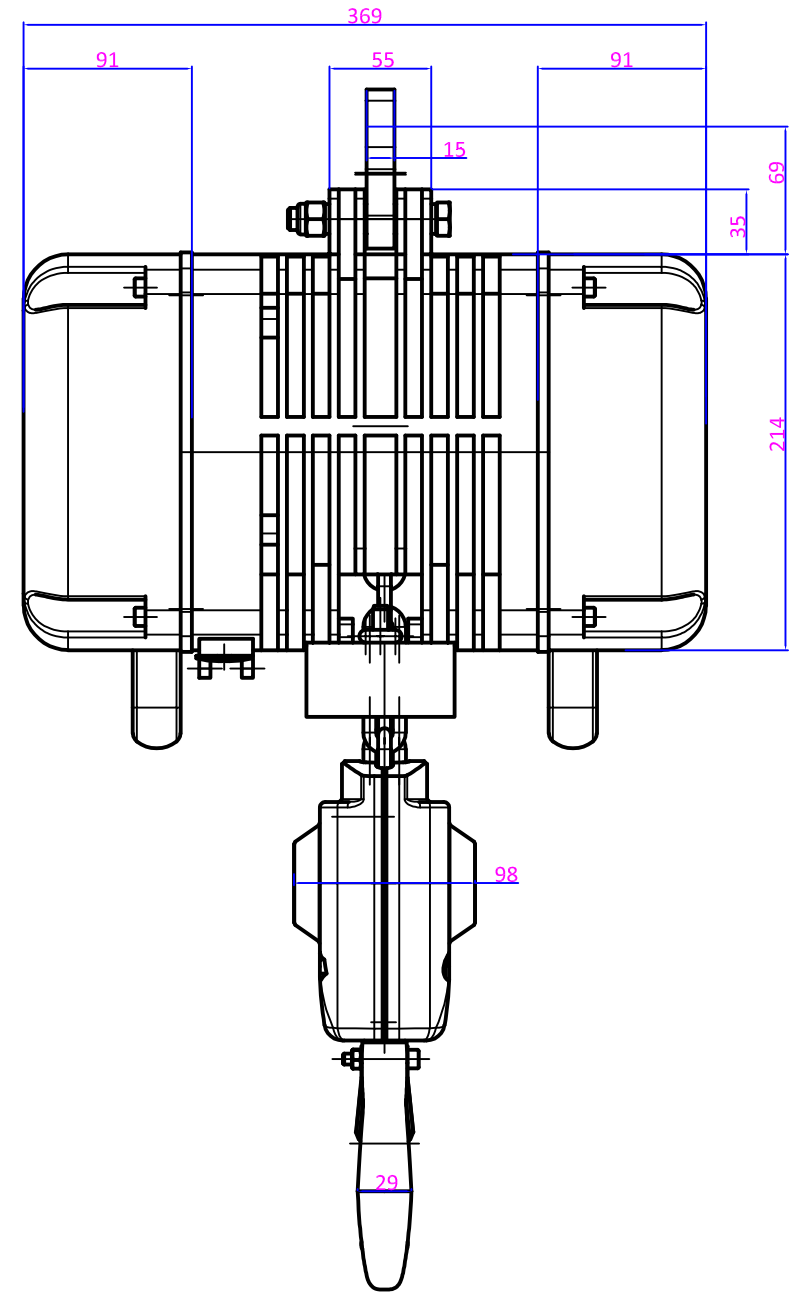
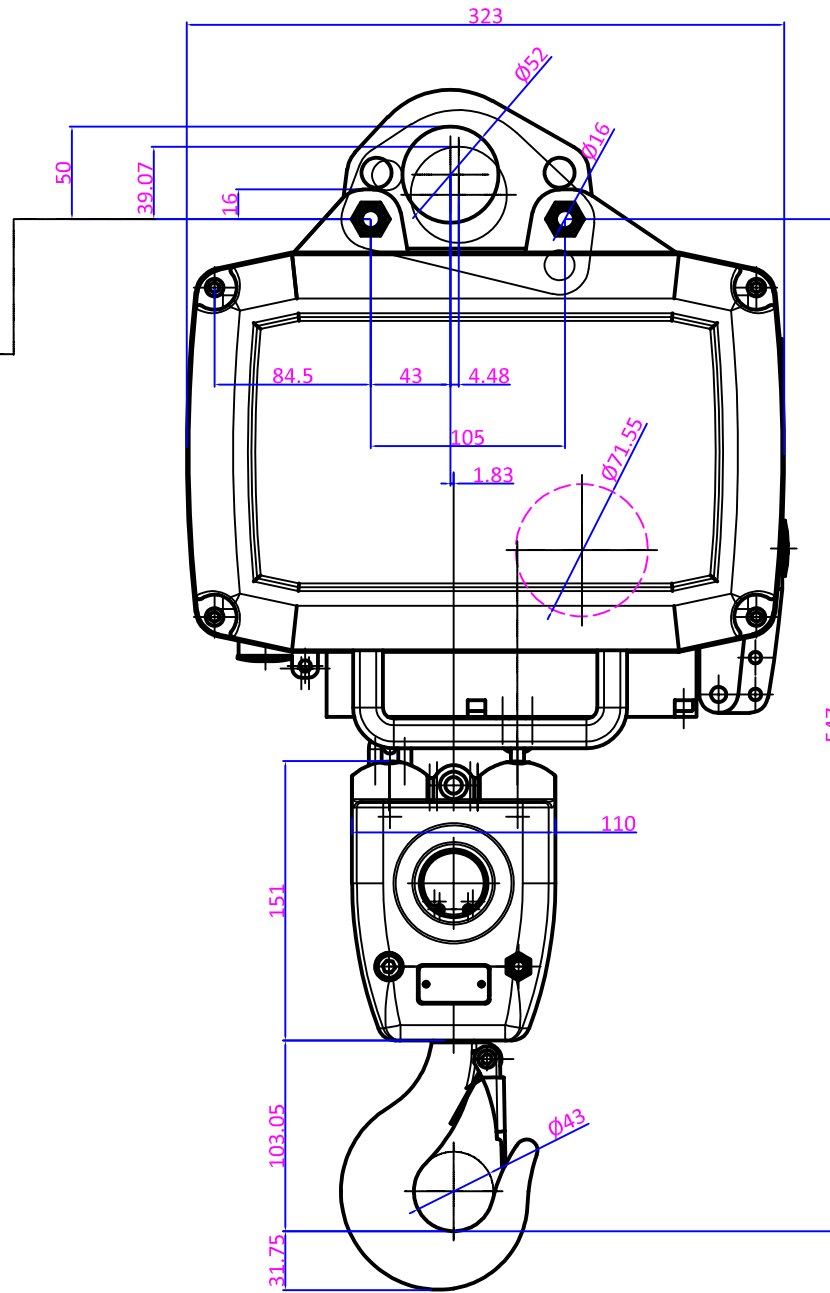
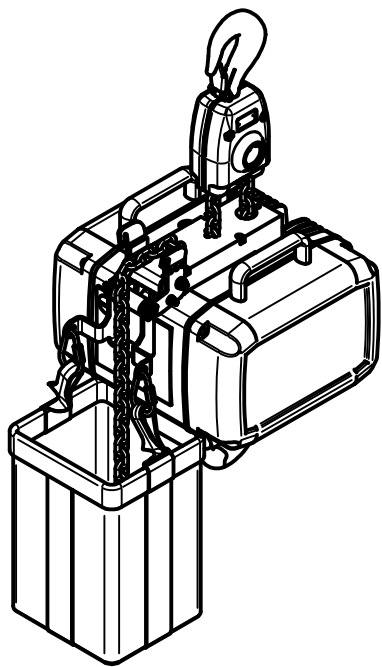
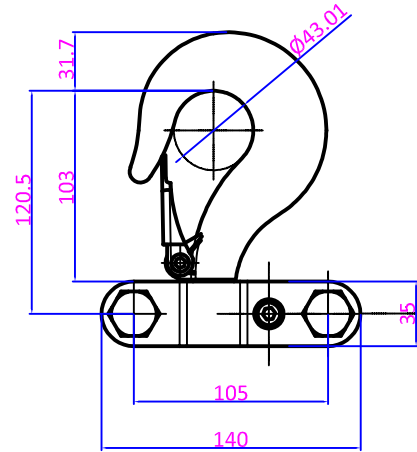
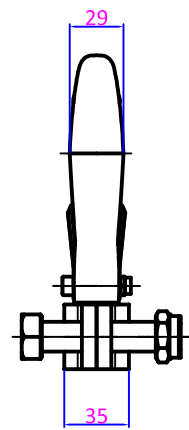


Rev No	Revision note	Date	Initials	Checked
01	First Issue	01.07.2017	SF	SF
XX	XX	XX-XX-XXXX	XX	XX




**PROFILE STEEL CHAIN SPECIFICATION**

- Steel Chain Finish: Black Phosphated
- Chain Grade: DAT (8SS), FEM9.671
- Chain Size: 7mm x 22mm
- Chain Weight Per metre: 1.04kg

**CHAIN HOIST ADDITIONAL SPECIFICATIONS**

- Protection DIN 40050: IP55
- Insulation class: F
- Fuse protection generally: 10A
- Load hook DIN 15401: 05
- Classification according to ISO 4301-1 / FEM

Classification	M3/1Bm	M4/1Am	M5/2m	M5/2m	Lifting speed	Motor power	3Ph 3x400V 50Hz	Weight unequipped	Chain safety static
	kg	kg	kg	kg					
Switches /h	150	180	240	300					
Duty factor %	25%	30%	40%	50%					
	kg	kg	kg	kg	m/min. 50Hz	kW (50 Hz)	A	kg	
LG10/2N D8	2000	1600	1250	1000	4	1.45	4.3	39	6.28 : 1
LG10/2NL D8	2000	1600	1250	1000	2	0.73	3.5	39	6.28 : 1
LG10/2SF D8	1000	800	630	500	8/2	5.8/2.6	6.5/5.8	40	12.55 : 1
LG10/2NF D8	2000	1600	1250	1000	4/1	4.0/2.8	4.3/3.8	39	6.28 : 1

SCALE:	1:4	 <p><b>LIFT   TURN   MOVE   LTD</b></p> <p><a href="http://www.liftturnmove.co.uk">www.liftturnmove.co.uk</a></p> <p>INDUSTRIAL &amp; ENTERTAINMENT LIFTING EQUIPMENT</p>	Unit 2 Stadium Court, Plantation Road, Bromborough, United Kingdom, CH62 3QG Tel: +44 151 6490467 Email: Sales@liftturnmove.co.uk
SIZE:	A3		
SHEET:	1 OF 1		
DRAWN:	GIS		
CHECK:	SF		
ISSUED:	02.07.2017		
REV:	01	TITLE:	LG10 D8 Double Fall Arrangement
DWG NO:		LG10-D8-2F	