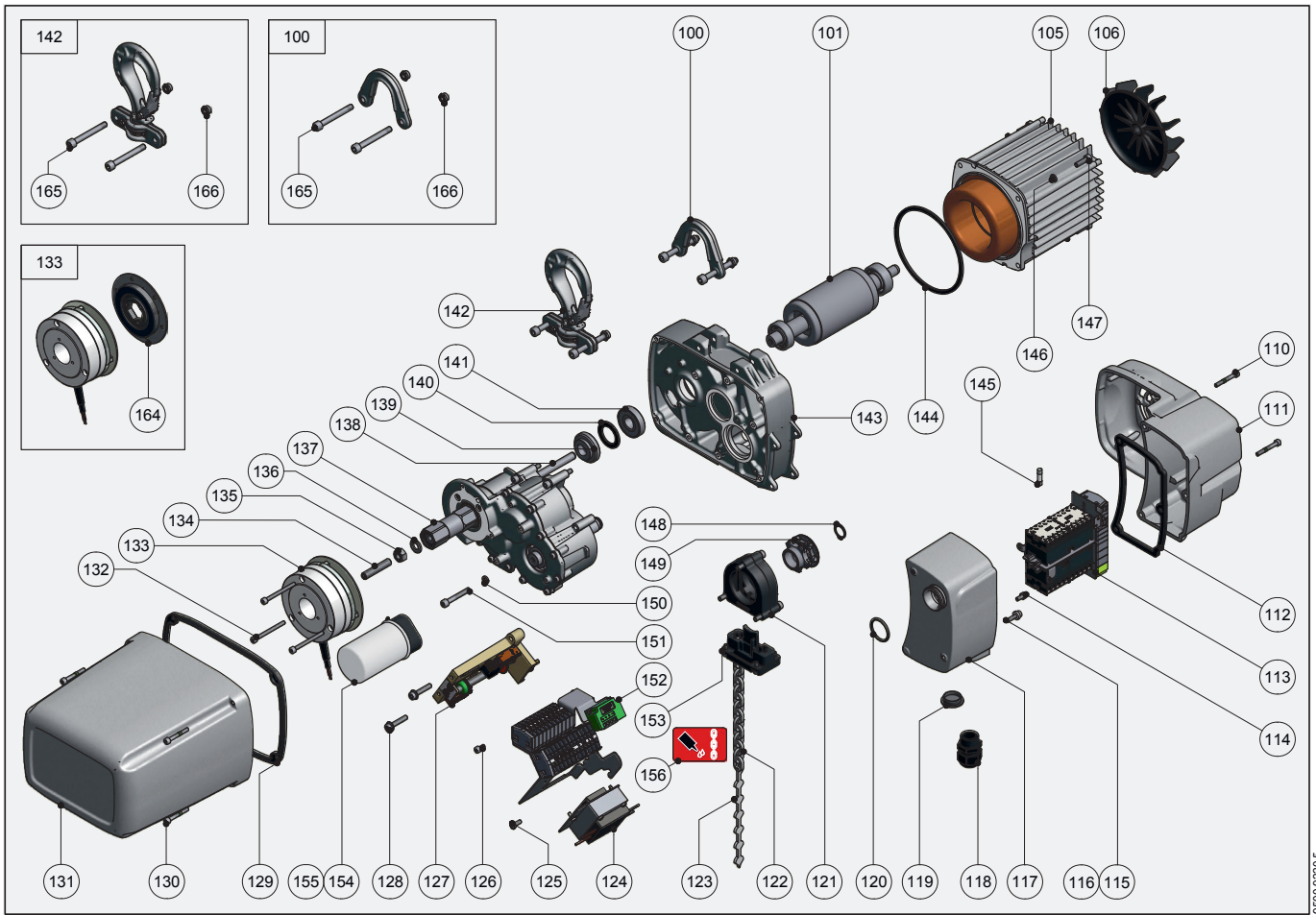


## ERSATZTEILE | STROMLAUFPLÄNE GPM 250

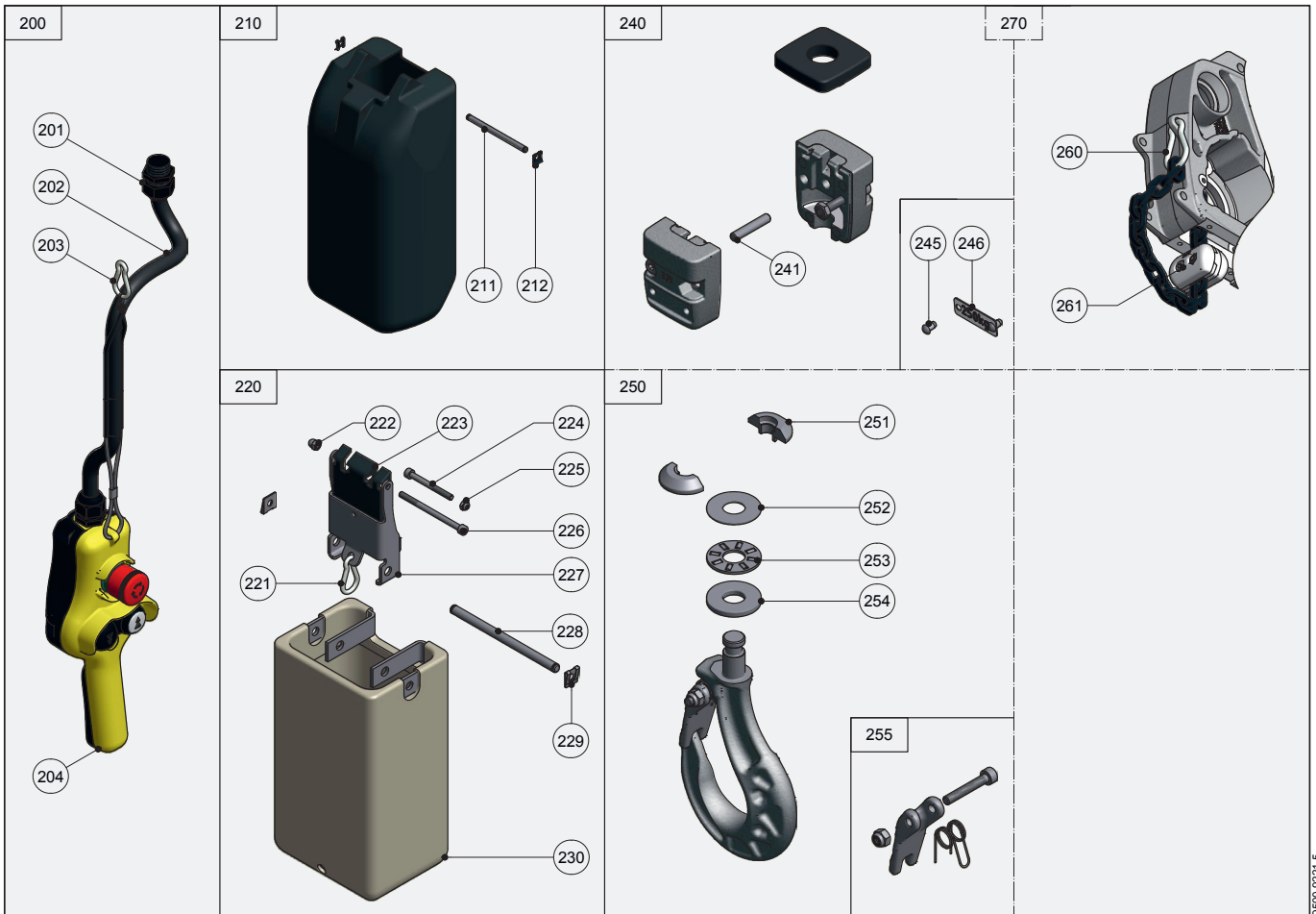
Spare parts | Pièces de rechange | Onderdelen | Reservedele | Varaosat | Pezzi di ricambio  
Reservedelen | Peças | Reservdelar | Piezas de recambio | Запасные части

Circuit diagrams | Schéma de connexions | Stroomschema | Kredslobsdiagrammer  
Kytkentäkaavio | Aansluitschema | Schema elettrico | Koplingskjema | Esquema electrico  
Elschema | Esquema eléctrico | Принципиальные электрические схемы





9500.9220.5



9500.9221.5

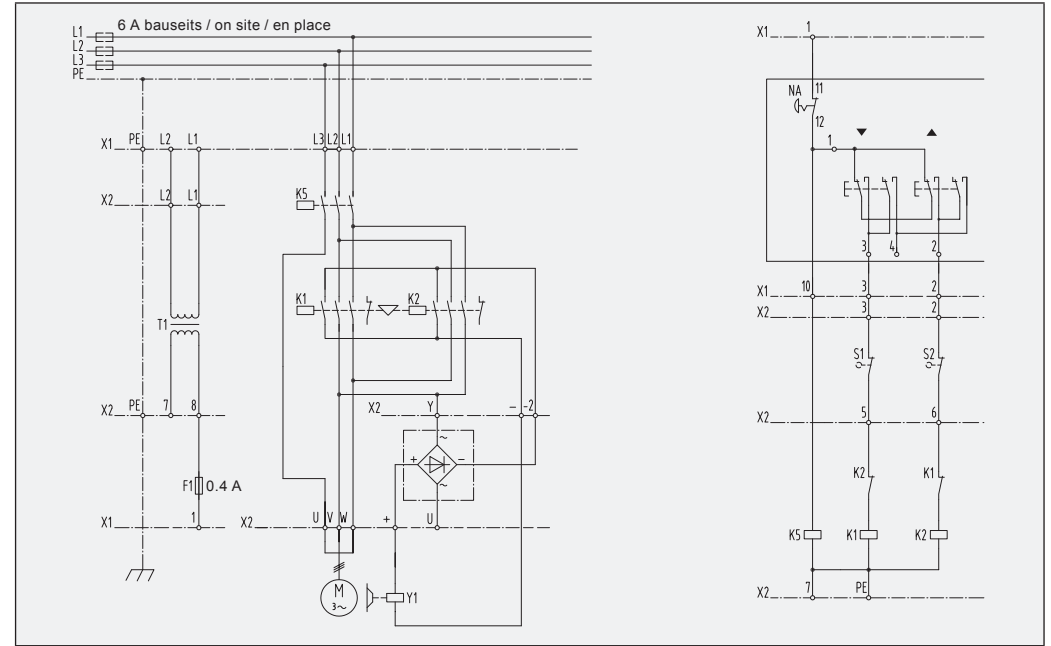
		GPM 250
100*	84 x 59	9500.3079.3
101	2t, L = 80	9500.3027.3
	1t, L = 60	9500.3028.3
105	2/8p, 3 x 230V 50Hz	9502.0351.3
	2/8p, 3 x 400V 50Hz	9502.0350.3
	2/8p, 3 x 460V 60Hz, CSA	9502.0350.3
	4p, 1 x 115V 50Hz, KX	9502.0162.3
	4p, 1 x 230V 50Hz, KX	9502.0163.3
	4p, 1 x 115/230V 60Hz, KX, CSA	9502.0164.3
106	ø113/ø11 x 29	9500.3075.3
110	M4 x 30	9030.0329
111	191 x 139 x 92	9500.3017.2
112*	136 x 78 x 4	9500.3033.3
113	90 x 105 x 29.5	9502.1205.3
	2t+NA, 42V	9512.1100.2
	1t+NA, 115V, 1Ph	9502.1055.2
	1t+NA, 230V, 1Ph	9502.1056.2
114	M4 x 8	9030.0325
115	M4 x 16	9030.0253
116	M4	9040.2512
117	78 x 81 x 135	9500.3074.3
118	M20 x 1.5	9055.3102
119	M20 x 1.5	9055.3512
120	ø23.6 x ø2.65	9035.0031
121*	66 x 31 x 88	9500.3078.3
122*	3.75 x 10.75	9039.0028
123	140 x 12 x 3 (3.75 mm)	9041.6034
124	400/42V	9056.4601.4
	230/460//42V, CSA	9056.4641.4
125	M4 x 10	9030.5250
126	M4 x 8	9030.0325
127	103 x 84 x 41	9500.3069.3
128	M5 x 25	9030.0022
129*	188 x 134 x 6	9500.3034.3
130	M4 x 30	9030.0329
131	189 x 186 x 133	9500.3005.2
132	M4 x 45	0030.9287
133	3Nm, 100-125VAC 50/60Hz	9050.4082
	3Nm, 200-240VAC 50/60Hz	9050.4083
	3Nm, 360-420VAC 50/60Hz	9050.4084
	3Nm, 440-480VAC 50/60Hz	9050.4085
134	M8 x 40	9030.2018
135	M8	0031.0008
136	ø8.4/ø16 x 1.6	0031.0578
137	165 x 200 x 120, -N	9500.3031.3
	165 x 200 x 120, -S	9500.3091.3
138	ø8 x 60	9031.5861
139*	ø35 x 11	9500.3048.4
140*	ø32/ø22 x 2	9500.3046.4
141*	ø35 x 13	9500.3047.4
142*	84 x 177	9500.3157.3
143	205 x 42 x 151	9500.3000.0
144	ø105/ø97 x 2.5	9500.3054.4
145	0.315A UL	9052.0013
146	M5	9031.3902
147	M5 x 16	9030.0262
148	ø14 x 1	0031.1008
149*	ø39 x 27	9500.3030.3
150	M5	9031.3902
151	M5 x 35/22	9030.0267
152	2t, max. 480V	9502.1203.3
	DC	9502.1201.3
	1t, 1Ph	9502.1202.3
153*	60 x 36 x 42	9500.3008.3
154	220µF, 1Ph 115V 50Hz	9059.0022
	50µF, 1Ph 230V 50Hz	9059.0021
	275µF, 1Ph 115V 60Hz	9059.0020
	60µF, 1Ph 230V 60Hz	9059.0023
155	4.5 x 360	0055.0818
156	0.25 l	9041.0007
164*	ø84 x 9	9400.3156.4
165	M6 x 50	9500.3139.4
166	M6	9031.1276

		GPM 250
200*	2K NA 3 m	9290.1086.3
	2K NA 4 m	9290.1087.3
	2K NA 5 m	9290.1088.3
	2K NA 6 m	9290.1089.3
	2K NA 7 m	9290.2014.3
	2K NA 8 m	9290.1090.3
	2K NA 10 m	9290.1091.3
	2K NA 12 m	9290.1092.3
	2K NA 15 m	9290.1093.3
	2K NA 20 m	9290.1094.3
201*	M20 x 1.5	9055.3102
202*	5 x 0.75 mm <sup>2</sup> , L =	9055.0110
203	ø4 x 40	9031.8007
204*	2K NA	9290.2000.3
210	255 x 95 x 120, 8 m KS	9500.3016.2
211	ø5 x 73	9500.3041.4
212	9 x 10 x 3	9031.2401
220	100 x 126 x 230, 8 m	9500.3081.3
	100 x 126 x 350, 18 m	9500.3082.3
	100 x 126 x 800, 32 m	9500.3140.3
221	ø4 x 40	9031.8007
222	M5	9031.1051
223	60 x 30 x 91	9500.3015.3
224	M5 x 50	9030.0270
225	M5	9031.1275
226	M5 x 75	9030.0327
227	110 x 31 x 22	9500.3040.3
228	ø8 x 127	9500.3086.4
229	9 x 10 x 3	9031.2401
240*	35 x 35 x 41	9500.3109.3
241*	ø4 x 22	9500.3134.4
245	ø3 x 5	9031.6604
246	250 kg	9210.3721.4
	200 kg	9210.3720.4
	160 kg	9210.3719.4
	125 kg	9210.3718.4
	100 kg	9210.3717.4
	80 kg	9215.3090.4
250*	115 x 68 x 29	9500.3060.3
251	ø23 x 8	9500.3064.4
252*	ø10/ø24 x 1	9038.1757
253*	ø10/ø24 x 2	9038.0262
254*	ø10/ø24 x 2.75	9038.1756
255*	41 x 18	9500.3095.4
260	ø4 x 40	9031.8007
261	22 x 36	9500.3013.3
270	1-fall	9500.3110.3

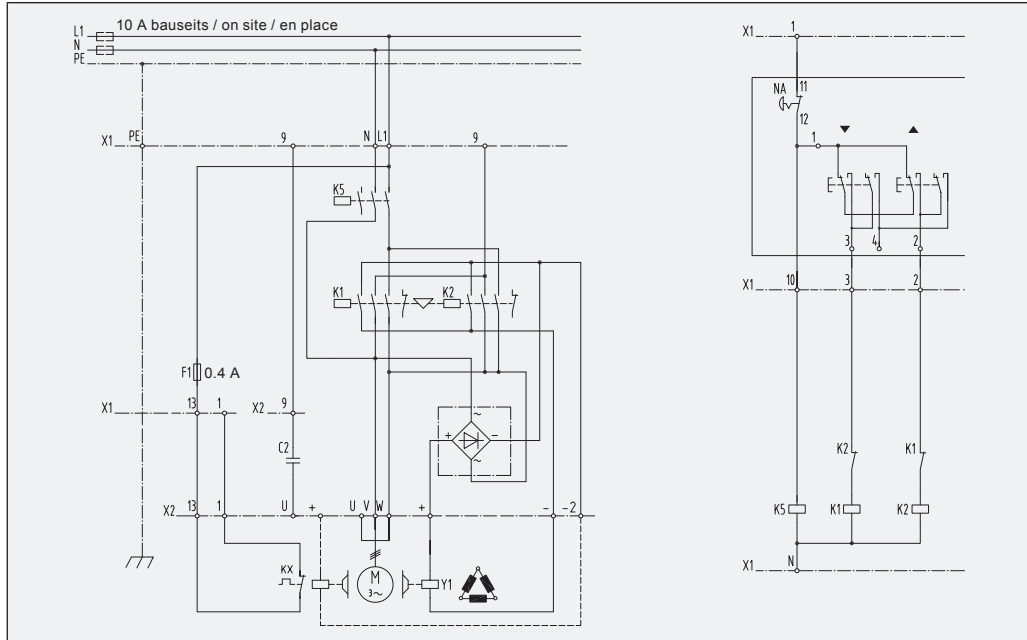
Schützensteuerung Contactor control Commande par contacteurs	1 Geschwindigkeit mit Not-Aus 1 speed with emergency stop 1 vitesse avec marche-arrêt	9500.9510.4 / 3 Ph
	2 Geschwindigkeiten mit Not-Aus 2 speeds with emergency stop 2 vitesses avec marche-arrêt	9500.9511.4 / 3 Ph
	1 Geschwindigkeit mit Not-Aus 1 speed with emergency stop 1 vitesse avec marche-arrêt	9500.9517.3 / 1 Ph

F	Steuersicherung	Control fuse	Fusible de commande
K	Schütz	Contacteur	Contacteur
L	Zuleitung	Power supply	Alimentation électrique
N	Nullleiter	Neutral	Neutre
NA	Not-Aus	Emergency stop	Marche-arrêt
PE	Erdung	Earth	Mise à la terre
S	Schalter	Switch	Interrupteur
T	Transformator	Transformer	Transformateur
U, V, W	Motor	Motor	Moteur
X	Klemmenleiste	Terminal strip	Bornier de raccordement
Y	Bremse	Brake	Frein

9500.9510.4 / 3 Ph



9500.9517.3 / 1 Ph



9500.9511.4 / 3 Ph

