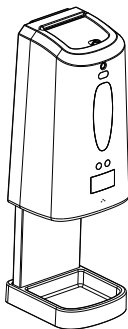


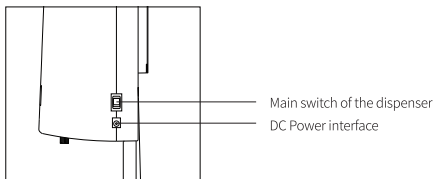
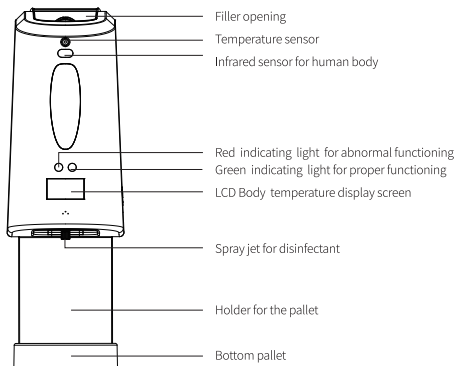
Installation Instruction Of The Dispensers

(Model: LKS-TM003S)



Thank you for choosing our company's intelligent temperature measurement and disinfection products, please follow the instructions below to install and use this product.

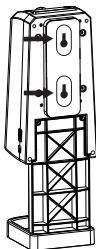
PRODUCT STRUCTURE DESCRIPTION:



INSTALLATION METHOD:

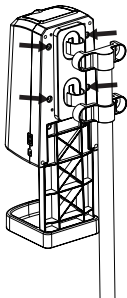
1) Installation method for wall-mounted dispenser

Open the front cap of the dispenser firstly, then use the backplane as a template to mark the location of the mounting hole at the installation location, and use appendant rubber plugs and screws to permanent the position.



2) Installation method for the standing dispenser

Installation method for the standing dispenser: install and permanent the dispenser with round fasteners at the top of the standing cylindrical bracket.



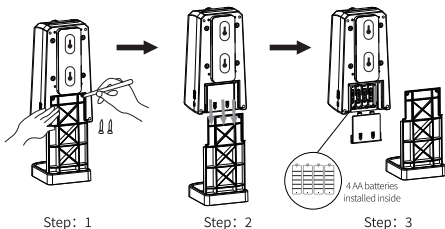
BATTERY INSTALLATION AND POWER SUPPLY MODE:

1) Battery installation

Take out the dispenser from the tray bracket, open the cell box on the back of the dispenser, and then put 4 AA batteries according to the positive and negative signs inside the cell box.

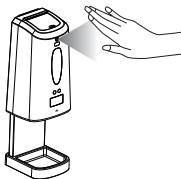
2) Power supply mode

4 AA batteries installed inside or external 5V 1A adapter.

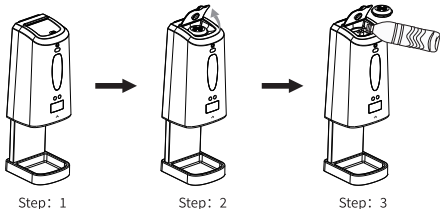


TEMPERATURE MEASURING FUNCTION FOR HANDS

Put your hands within 3-5 CM of the sensor for 2 seconds before they are disinfected by the sanitizer, then the LCD screen will show the temperature of the tested human body.



FILLING THE DISINFECTANT:



Methods of using 3 disinfectant dispensers

Open the cap at the top of the dispenser and take out the directed air cover, then fill the liquid spray disinfectant, gel disposable hand sanitizer or foam disinfectant into the dispenser and restore the cap and directed air cover; Then supply power to the dispenser, put your hands in the detecting area of the dispenser sensor, and the dispenser will automatically spray disinfectant. The liquid output of the 3 dispensers are: for the spray pump, 0.5ml/time; for the drop pump, 1ml/time; for the foam pump, 0.8ml/time.

ATTENTION:

- 1) Please keep your hands dry and clean before testing the temperature, and the temperature measurement error is ± 0.3 °C. The color of the LCD screen will be green for normal temperature, orange for slightly higher body temperature, red for high body temperature.
- 2) When the disinfectant in the dispenser is insufficient, the red light will flash continuously.

3) The power supply mode adopts battery and external DC power supply: external 5V 1A adapter or 4 AA batteries installed inside.

4) Please turn on the switch on the right side of the dispenser before use.

PRODUCT PARAMETER:

Model	LKS-TM003S
Operating Voltage	DC5V±10%
Verification Mode	High precision infrared sensing test
Method of hand disinfection	Disinfectant spray, Gel disinfection, Bubble disinfection
Category	Spray type, gel type, froth type
Quantity of liquid	Gel: 1.2-1.5ml Spray: 0.5ml Froth: 0.8ml
LCD Hd Screen	Green (normal temperature) Yellow (high temperature) Red
Measuring range	35.5°C—42°C (Non-medical product functions)
Accuracy	Accuracy: ±0.3°C hand distance: 3CM—5CM
Trigger mode	Infrared induction, adjustable induction distance, Strong anti-interference, Not afraid of changes in light, not affected by skin color
Margin	Turn on red light when the residual amount of disinfectant
Capacity	1300ml Fillable inner bottle
Pump head	Service life more than 300,000 times
Power supply	4 AA batteries or external 5V 1A adapters are installed internally
Size	131mm (wide) ×399mm (high) ×138mm (thick)
Shell material	ABS materials
Installation	Wall-mounted, Desktop
Using environment	Indoor environment: 10°C—40°C