



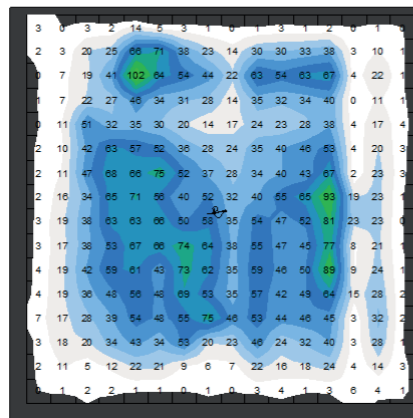
www.airospring.co.uk

AIROSPRING MEDICAL LTD
Burr Lane, Ilkeston
Derbyshire DE7 5JD UK

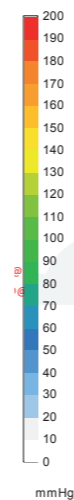
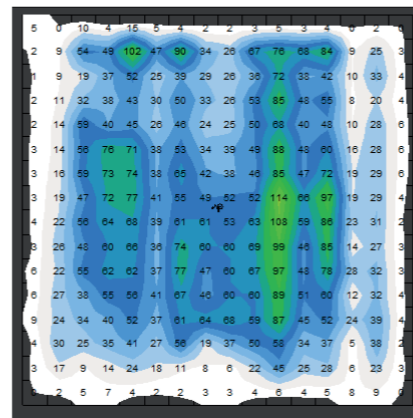
**PRESSURE MAPPING PROFILES FOR
AS400PRO WHEELCHAIR CUSHION
- after 15min of loading**

PRESSURE PROFILES after 15mins:

Load at 0.750kN / 76.5kgs/12st



Load 1.000kN (102kg/16st)



**Pressure mapping profile images of AS400
fully contoured wheelchair cushion
- Load 0.750kN and 1.000kN**

sales@airospring.com
+44 (0)115 8240560



**NEW STANDARD
IN HEALTHY
SITTING**

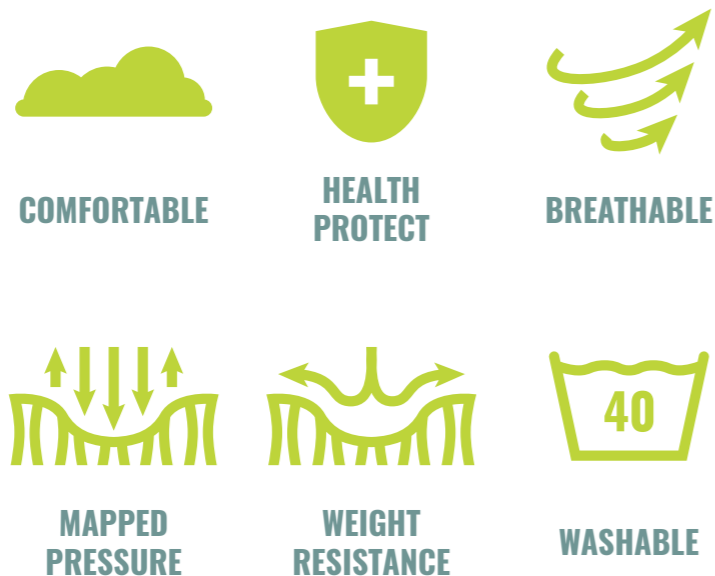


AS-400 PRESSURE CONTROL CUSHION

Airospring® is the revolutionary cushion everyone is talking about. It distributes pressure evenly, dissipates heat and moisture and creates a microclimate under the skin. It is ideal for anyone who sits in the same position for long periods of time. Airospring is produced from high-tech 3D knitted fabrics.

The product is UK manufactured and is the result of five years of extensive research.

Choose Airospring. Choose a better Quality of Life.



THE VARIOUS INNOVATIVE AND UNIQUE FEATURES OF THE AIROSPRING® CUSHIONS:

1. They provide postural support, particularly to the pelvis using Airospring's unique patented technology
2. They are breathable and marketed under the Microclimat™ trademark when used with Dartex outer cover. Recent tests confirmed the excellent performance in moving humidity and heat away from the body. A 1 degree oC increase in skin temperature leads to a 13% increase and metabolic demand
3. AS300 and AS400 postural support cushions provide superior performance in pressure distribution compared to cushions costing 25-50% more
4. Airospring has completed 3 years of academic research and has been granted a European patent for its ground breaking work.
5. They are machine washable and when used with a Dartex MIC 200 cover are suitable for hospital and care home use meeting the requirements of Crib "

