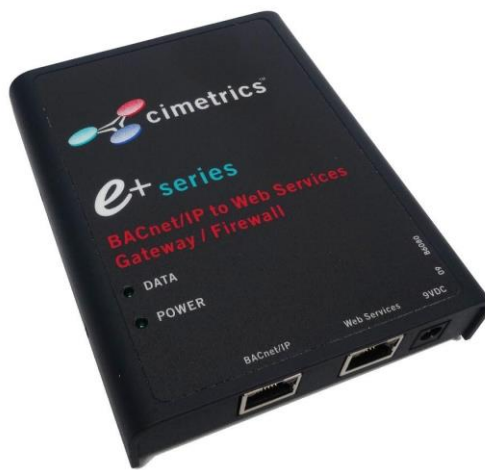
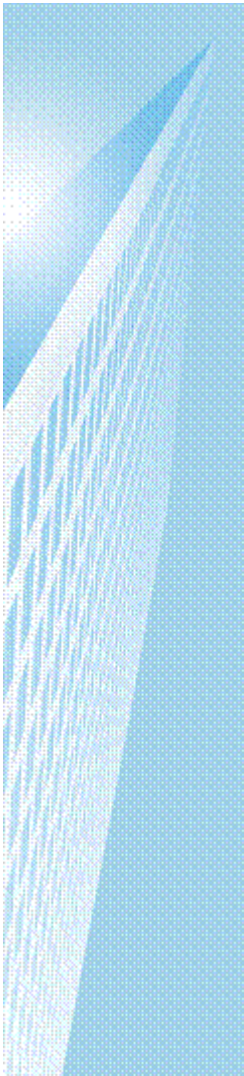


B6080



BACnet/IP to Web Services Gateway/Firewall



Configuration Guide

Introduction

The BACnet/IP to Web Services Gateway enables innovative applications to come together with existing Building Automation systems so you can offer solutions that save money and improve building comfort.

The Web Services connection conforms to XML/SOAP and WSDL standards which are supported by almost all Enterprise software vendors. This allows an easy method of controlling and monitoring BACnet devices without needing to know anything about the BACnet protocol.

Contact: support@cimetrics.com.

NCL Creator

In order to map the BACnet nodes to Web Services you will need a program called NCL Creator. Download NCL Creator on our site <https://www.cimetrics.com/products/b6080-bacnet-interface-to-web-sites> under Documentation tab.

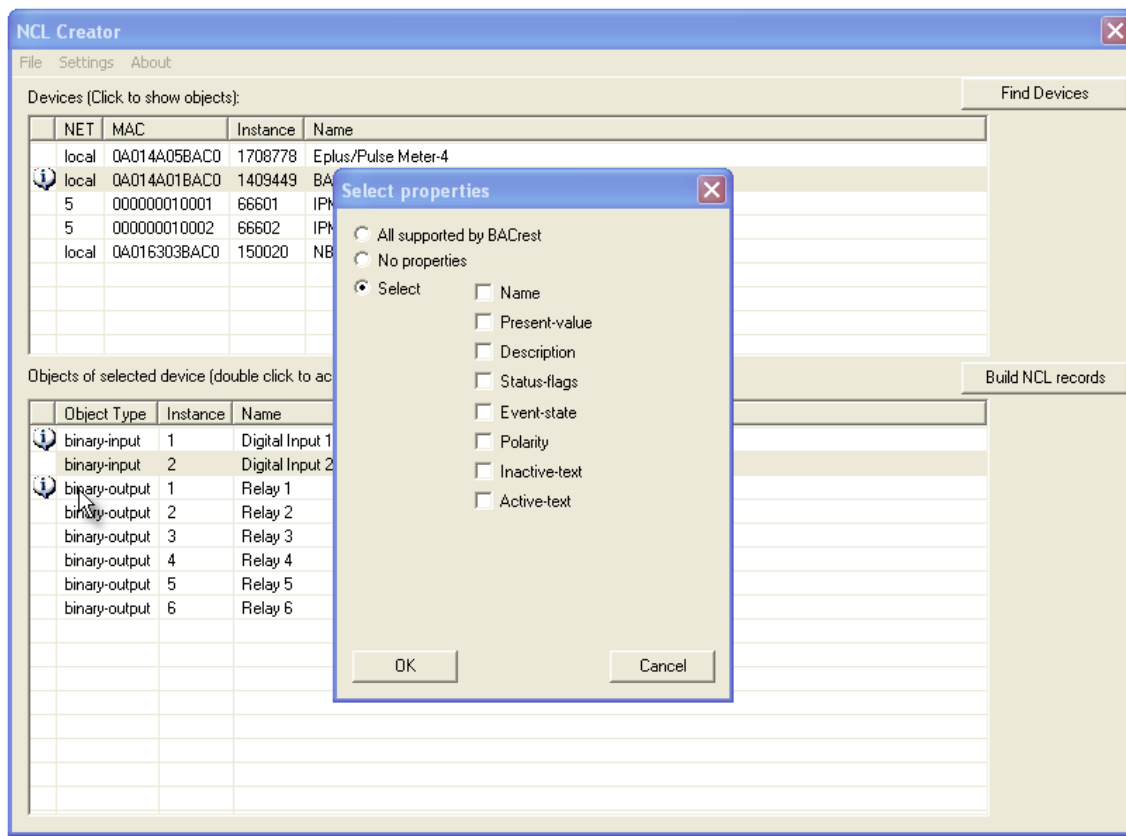
This document will help you:

- Install the Install_NCLCreator.exe
- Create a Node Control List file (aka NCL File)
- Upload the created NCL file to the BACnet Web Services Gateway

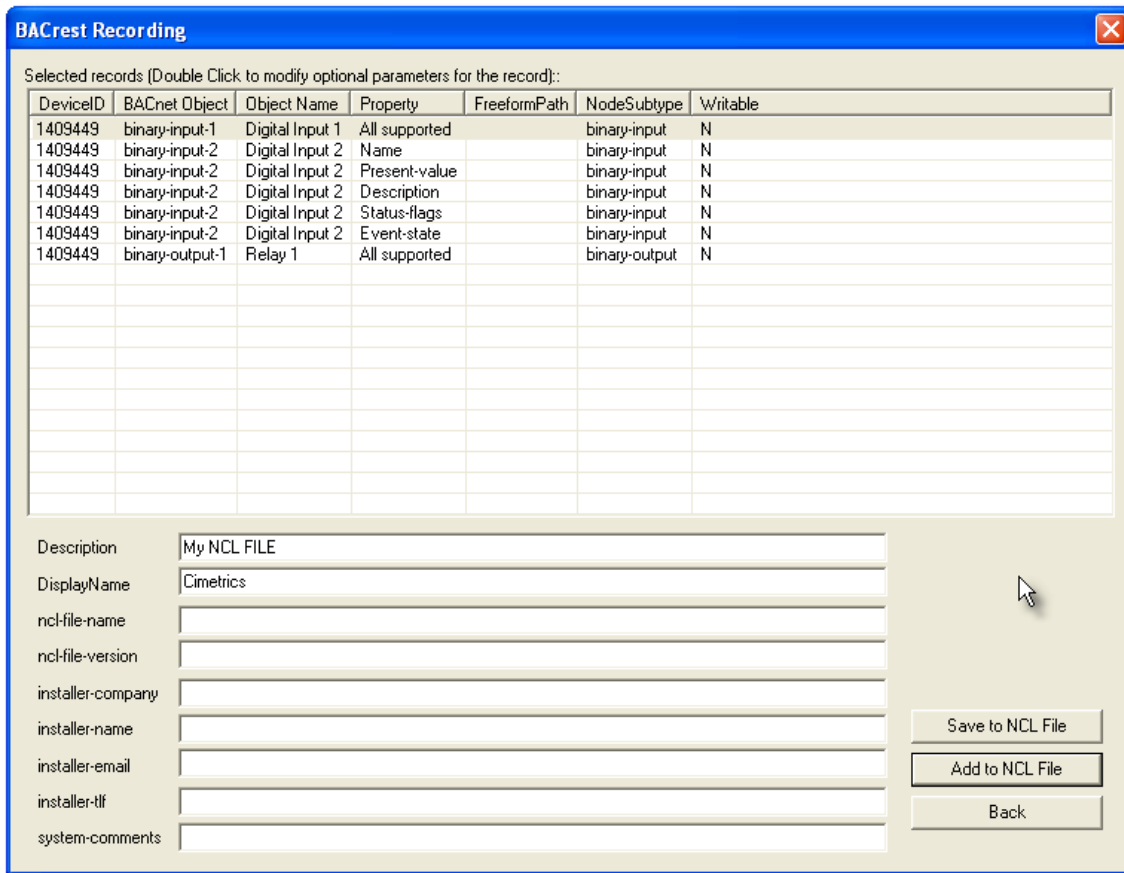
Starting for the first time

Once the installation of Install_NCLCreator.exe is complete, you will need to create an NCL (Node Control List) file to upload into the Web services Gateway. Using the “NclCreator” which is located at **Start | All Programs | NclCreator**, create the NCL file. In order to create the NCL file you will need to be connected to the BACnet network.

- Once you are connected to the BACnet network, start the NclCreator program and click on the “**Find Devices**” button. This action will result in the discovery of all the BACnet devices on your network. Once the devices are identified (exhibited with a backward slash “/” displayed on the top half of the window) single click on one of the devices. Clicking on the device will the objects of that device; the results are displayed in the lower half of the window. In the lower window, double click on the object you would like to map to the Web Services Gateway. Double clicking on the object will open up the “**Select Properties**” window. Select the properties you would like assigned to the object followed by clicking on OK. Once you have worked through all the devices and objects, you are ready to create the NCL File.

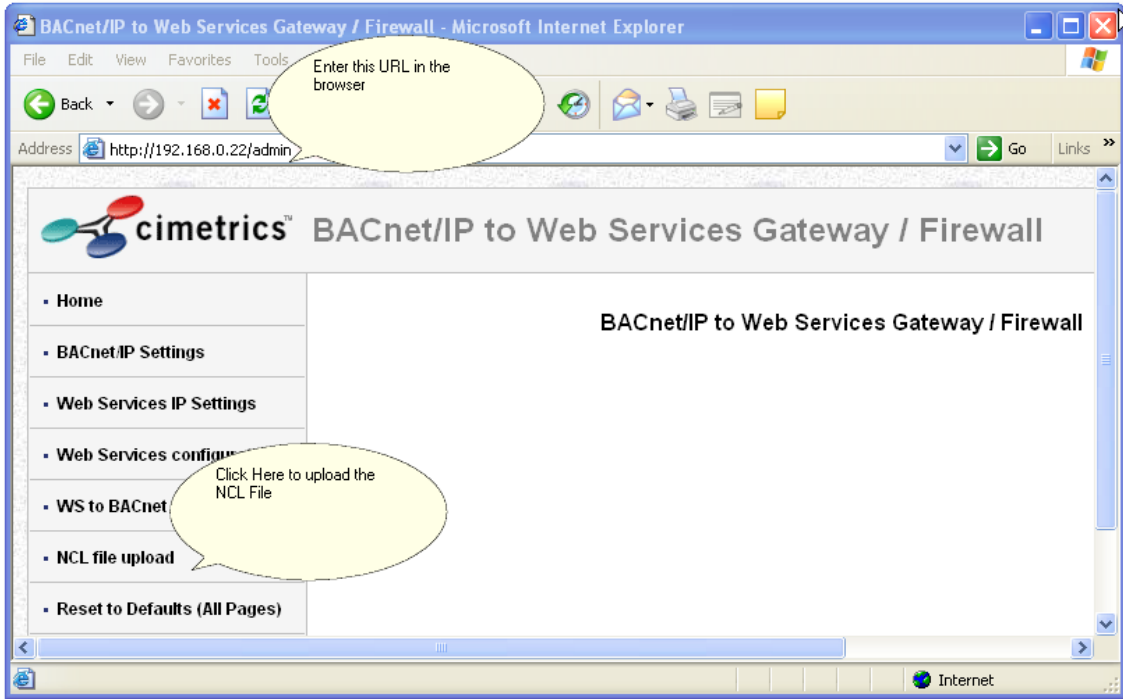


- Clicking on the “**Build NCL Records**” button will help create the NCL file. Once this button is clicked, complete the necessary information and click on “**Save to NCL File**”. This will create a new NCL File. Clicking on “**ADD to NCL File**” will allow you to add new points to an already existing NCL File.

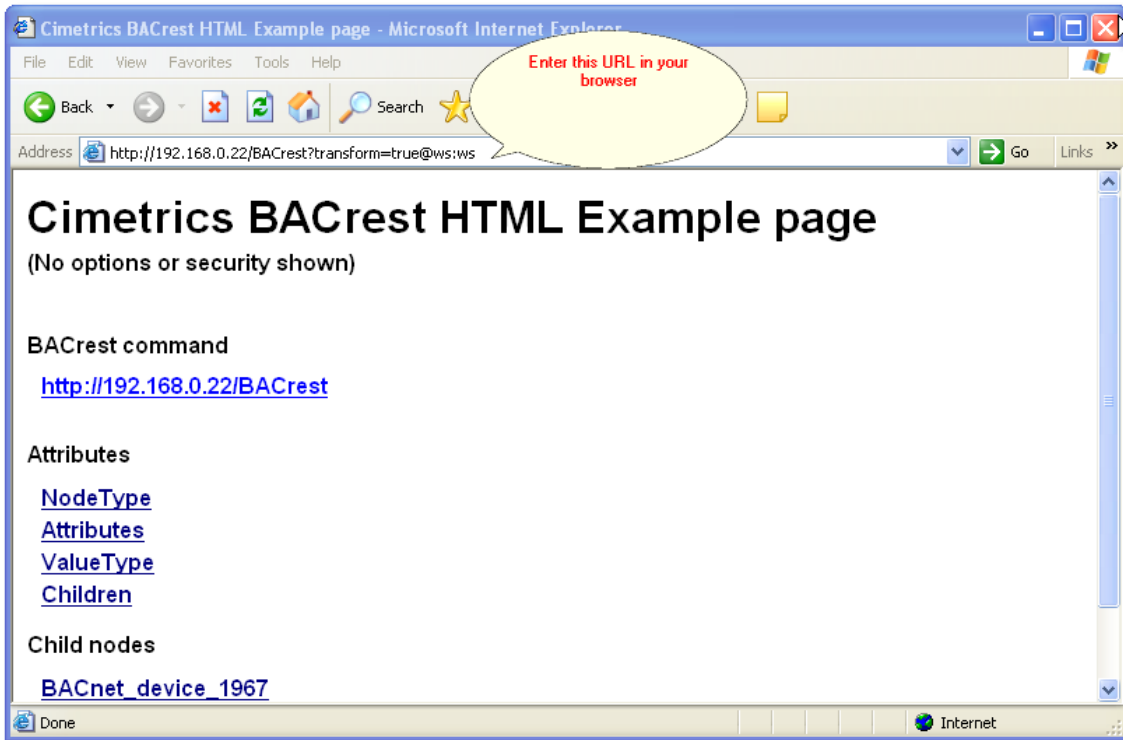


Once the NCL file is saved you are ready to upload this file to the BACnet Web Services Gateway.

Connect the Web Services Gateway box to your network (i.e. Laptop/Desktop) for configuration. Please follow the “*Eplus_series_start_document.DOC*” to log into the Gateway. Once logged in, your screen should look something like the picture below.



Click on the link on the left menu that reads **“NCL File Upload”** and change the directory where you have saved the NCL File. Once the file is uploaded, a confirmation message will appear. Below is a picture of the BACrest screen.



Now you can browse through the point list and click on any of the properties to get their respective values.