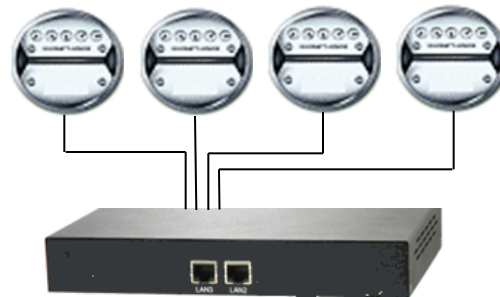


High capacity series BACnet/IP to 100 Utility Meters

- Professional BACnet/IP connectivity
- Interfaces to 100 Steam, BTU, or Electrical meters
- Easy system installation
- Add to existing **Building Automation Systems**
- Easy browser setup (built-in web server)
- Informative naming convention with device model and definition
- Standard RS485 three wire connection
- Data and Power indication
- Simultaneous session access to BACnet data, Web page and files
- Deploy proven default settings



Up to 100 meters

PRODUCT INFORMATION

This product enables the integration of meter information into an HVAC system, and allows 3rd party vendors the ability to offer value-added services.

Meter data exposed to the BACnet/IP network includes Power, Energy, Demand, MaxDemand, Power_Factor, Flow and Consumption. Current, Voltage, and Phase are also represented if this is supported by the meter.

Permanently available meter templates can be selected

Meters Configuration

Parameter	Value	
Baud rate	9600	The baud rate of serial port.
Serial Mode	None	e: 8-N-1 (8 data)
Polling Delay	Controlotron 1010 with 1015N COMM (FUS1010) GE EPM ION 73x0 (ION73x0) GE EPM ION 75x0 (ION75x0) GE EPM ION 7700 (ION7700)	sec) between the
Meter 1 Configuration	KEP Supertrol Flow Computer ST-II (KEPSTII) Power Measurement ION 73x0 (ION73x0) Power Measurement ION 75x0 (ION75x0) Power Measurement ION 7700 (ION7700)	
Device Address	Power Measurement ION 73x0 (ION73x0)	
Meter Model	Power Measurement ION 83x0 (ION8600)	
Description	Schneider SquareD Energy-Monitor EMxx (EMxx) Schneider SquareD ION 62x0 (ION82x0) Schneider SquareD ION 73x0 (ION73x0) Schneider SquareD ION 75x0 (ION75x0) Schneider SquareD ION 7700 (ION7700)	
Meter 2 Configuration	Schneider SquareD ION 83x0/8600 (ION8600)	
Device Address	Schneider SquareD PowerLogic PM710 (PM710) Schneider SquareD PowerLogic PM750 (PM750) Schneider SquareD PowerLogic PM820 (PM820)	
Meter Model	Schneider SquareD PowerLogic PM850 (PM850)	
Description	Siemens ION 83x0/8600 (ION8600) Siemens ION 93x0 (ION73x0) Siemens ION 95x0 (ION75x0) Siemens ION 9700 (ION7700)	
Meter 3 Configuration	Siemens SitransF FUS 1010 with 1015N COMM (FUS1010)	
Device Address	Veris Commercial H8163 (H8163)	
Meter Model	Veris Hawkeye H8036 (H8036)	
Meter Model	None	



Specifications are subject to change without notice. BACnet is a registered trademark of ASHRAE. No endorsement of this system by any manufacturer or organization is implied. All other brand names and product names are trademarks of Cimetrics, Inc. Copyright © 2011 Cimetrics, Inc. All rights reserved.

Boston, MA tel: 617-350-7550 - fax: 617-350-7552 - products@cimetrics.com - www.cimetrics.com

Modbus DETAILS

Meters from Siemens, Schneider, GE, EIG, Emon, PML etc. supported using their ModbusTCP or gatewayed (via a B2000) ModbusRTU option.

BACnet DETAILS

Device and Analog objects

HARDWARE SPECIFICATIONS

Power.....	DC at 12VDC at 3A
Adapter Input Voltage.....	90 to 250 VAC (auto) under 50W
Physical Protection	IP30 DIN EN 60529 (VDE 0470) 210 x 150 x 33 mm (8.3 x 6.0 x 1.3 inches)
Dimensions.....	2 lb / 1 kg

PRODUCT SUPPORT

One year parts, labor, and technical installation support (via telephone or email)

ORDERING INFORMATION

- B6035- B/IP - 100 x utility meters gateway
- B6099 - DIN rail

