

Attainment's



program design **Tereza Snyder**
programming **Tereza Snyder, Joshua Snyder**
graphics **Tereza Snyder**
sound design **Joshua Snyder**
testing and technical services **Craig Booth**
package design **Beverly Potts**
quality assurance **Julie Denu**

©2005 Attainment Company Inc. All rights reserved.
Portions © 1992-2005 Runtime Revolution, Ltd.



Attainment Company, Inc.

P.O. Box 930160 • Verona, WI 53593-0160 • USA

1-800-327-4269 • FAX 1.800.942.3865

www.AttainmentCompany.com



Contents

Installation	5
Introduction	6
Creating Pictures	
Backgrounds	7
Stencils	7
Colors	8
Erase stencil	8
Paper advance	8
Stencil controls	9
Options	10
Personalize	10
Print	10
Save	12
Erase	13
Scanning & Touch Screens	14
License	15
Technical Support	16

Installation

Windows

An **Autoplay** menu appears when you insert the **ArtTouch** CD. If the Autoplay menu doesn't automatically appear, select **Run** from the **Start Menu** and type **D:\autoplay.exe** (substitute your CD-ROM drive letter). Choose **Install** and follow the on-screen instructions to install the program. The program will appear in the Start Menu under Attainment Company.



Macintosh

The CD contents window will open when you insert the **ArtTouch** CD. If the CD contents window doesn't open, double click the CD icon on the desktop. Double click the **Install** icon and follow the on-screen instructions to install the program.

Introduction

Create pictures with **Art Touch** using stencils instead of free hand drawing. There are hundreds of stencils to select from.

Place your stencil selection on the “paper” and modify its location, size, color and other characteristics. Choose from a variety of backgrounds or use the blank white paper. Pictures can be printed or saved for use in other programs.

This software was designed with special consideration to alternative computer access methods such as touch screen or switch access through scanning.

Getting Started

The opening screen shows three **Art Touch** tablets. Each tablet has 9 blank pieces of paper. Click on one of the tablets to begin creating a picture.



Creating Pictures

Backgrounds

Select a tablet and the tablet fills the screen with a blank white piece of paper (background). There are 24 different background colors and themes to choose from. Click on the **Backdrop Tray** tab to view or select a different background. Background themes can be modified any time during the designing process.

Stencils

Twelve stencils are shown on a tablet at one time. Select a stencil for your picture then drag it onto the paper. Over 400 stencils are available by accessing the **Stencil Tray**. Click on the **Stencil Tray** tab. Each stencil on the tray represents a set of twelve. Click on a stencil in the tray to reveal that set of twelve on the **ArtTouch** tablet.

Backdrop Tray tab



Stencil Tray tab

Stencils



Colors

Eight colors are available in the color cups with an additional 40 colors available through the color bar selections. Select a color before adding new stencils. To change color of a stencil already on the paper, click on the stencil (an outline box will show around selected stencil) then select a new color.



Erase Stencils

To remove a stencil from the picture click and drag it off the paper or click the **Erase** button. Each time the **Erase** button is pressed the stencil last placed on the paper will erase.

Scroll backward



Scroll forward

Paper Advance

Each tablet has nine pieces of paper. To **scroll** the paper, roll the paper advance knobs—the left to scroll backwards, the right to scroll forwards. **Pictures are automatically saved in the tablet until you erase them** (see pg. 13).

Stencil controls

Size controls:

There are four size choices –



Spin controls:

Rotates stencils
90 degrees –



Reverse control
reverses the color
scheme of stencil.

**Layer
reposition/Pull
forward-Push
behind controls**
pulls the stencil
forward or
pushes it behind
when two or
more stencils
overlap.

Blur control
softens stencils to
reduce detail.

**Horizontal
flip control**
turns stencil
the other way.

**Vertical flip
control** turns the
stencil upside
down.



Access program options at the opening screen by clicking on the button in the upper left corner.



Personalize

Add personal touches like the artist's name and labels for each of the three tablets. To add the artist's name, click in the **Artist** box and type their name. To rename a table, click on a tablet label (Tablet One, Two or Three) and type a new label. The artist's name and tablet label will appear on the bottom of printed pages. Tablet labels are also used as part of the filename when saving pictures.


Print

There are two ways to print pictures: a tablet's grid of nine pictures or one picture per page.

To print all pictures in a tablet on one 3x3 grid, press the **PRINT** button below a tablet on the **Options** screen.

Sample print of all pictures in a tablet in one grid.



To print a single picture from a tablet, click on the  button below a tablet. The tablet shows all nine pictures in a 3 x 3 grid. Click to highlight the picture you want to print and press the **Print** button.



You can print, save or erase individual pictures from a tablet using this screen.

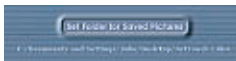
This button also opens the 3x3 grid allowing you to print, save or erase pictures, then returns you to the **Options** screen.



Sample print of a single picture from a tablet.


Save

ArtTouch pictures can be saved to your computer as separate JPEG files and used in other programs or as e-mail attachments. Pictures are saved in the **ArtTouch** folder. Change the location for saved pictures by clicking the **Set Folder for Saved Pictures** button on the Options screen. We recommend that you change the tablets' labels to prevent saved pictures from being overwritten.




To save each picture in a tablet to individual JPEG files, click on the


SAVE button below a tablet on the Options screen. The prompt box on the Options screen will tell you that all pictures in the chosen tablet have been saved in the chosen location. Filenames combine tablet names with number 1-9.

To save one picture at a time, press the  button below a tablet. The tablet shows all nine pictures in a 3 x 3 grid. Click to highlight the picture you want to save and press the **Save** button. The picture is saved to the chosen location.

Erase

There are two options: erase every picture in a tablet or erase an individual picture.

To erase all pictures in the tablet, press the  button under the tablet on the Options screen. Press the **Erase** button again to confirm that you want to erase all pictures from the tablet.

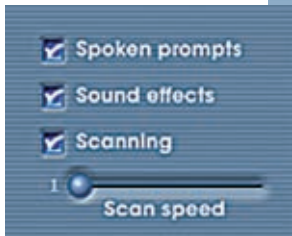
To erase an individual picture, click on the  button below the tablet. The tablet shows all nine pictures in a 3 x 3 grid. Click to highlight the picture you want to erase and press the **Erase** button.

Spoken prompts

Check to allow spoken prompts during scanning and narration on the **Help** screen.

Sound effects

This allows small sound effects to play from the program.



Scanning & Touch Screens

Scanning

Scanning is built into **ArtTouch**. Scanning is enabled on every screen except the **Options** screen. Start scanning at any time by activating **Spacebar** or **Enter** key.

Scanning speed

The slider sets the starting speed of scanning. Speed ranges from 1 to 10 second dwelling time. Scanning speed is adjustable while running the program using the keyboard vertical arrows.

Touch Screens

ArtTouch was designed with special consideration on accessing the program with a touch screen. All **ArtTouch** functions can be performed via touch screen.

License

Ownership

Attainment Company retains the title to the software program. The purchaser only gains the title to the enclosed CD.

Copyright

This program is protected by United States copyright laws and International copyright treaties.

Upgrades

If within 30 days of this software purchase Attainment releases a new version of the software, you may send the enclosed CD to Attainment Company for a CD containing the new software at no charge. After 30 days, you must pay an upgrade fee.

Warranty

Attainment Company warrants that the enclosed CD is free of defects in materials and workmanship for up to one year of purchase. If you discover a defect, return the enclosed CD to Attainment Company for a free replacement. There is a replacement charge of \$15.00, plus shipping and handling, for products replaced after such warranty expires.

Limitation of Liability

Attainment Company shall not be liable for damages, including incidental or consequential, arising from the use of the program or this documentation. Some states, however, do not allow the limitation or exclusion of liability for incidental or consequential damages. In these cases, this limitation may not apply.

Technical Support

If you have a problem running **ArtTouch** software, please call Attainment Technical Support. If possible, with your computer nearby, have the program running while we discuss solutions. You can speed the process if you collect some basic information ahead of time:

- Note the error and type of error message, if any,
- What triggers the problem?
- Can you duplicate the problem?
- The Macintosh system version or the Windows version.

Tech Support is available weekdays from 9am–5pm (CST)

Phone: 1-800-327-4269 or 1-608-845-7880

e-mail: info@AttainmentCompany.com

Web site: www.AttainmentCompany.com



Attainment Company, Inc.

P.O. Box 930160 • Verona, WI 53593-0160 • USA

1-800-327-4269 • FAX 1.800.942.3865

Visit our Web site at www.AttainmentCompany.com