

Part Number: 08162-42810

**Note:** Part numbers of these accessories may not be the same as the part numbers shown.

**Kit Contents**

Item #	Qty Reqd.	Description
1	2	Visor, Front
2	2	Visor, Rear

**Vehicle Service Parts:** (may be required for reassembly)

Item #	Qty Req'd	Description

**Hardware Bag Contents**

Item #	Qty Reqd.	Hardware Bag #	Description

**Additional Items Required For Installation:**

Item #	Qty Reqd.	Description

**Conflicts:**

--

**Recommended Tools:**

<b>Personal &amp; Vehicle Protection</b>	<b>Notes:</b>
Safety Glasses	
Safety Shoes	
<b>Special Tools:</b>	<b>Notes:</b>
<b>Installation Tools</b>	<b>Notes:</b>
Heat gun	
<b>Special Chemicals</b>	<b>Notes:</b>
Automotive Surface cleaner	Alcohol wipe (C0500-99998 or equivalent)


**General Applicability:**


MY19- Rav4
------------


**Recommended Sequence of Application:**


Item #	Accessory


\*Mandatory


 **STOP:** Damage to the vehicle may occur. Do not proceed until process has been complied with.

 **OPERATOR SAFETY:** Use caution to avoid risk of injury.

 **CAUTION:** A process that must be carefully observed in order to reduce the risk of damage to the accessory/vehicle and to ensure a quality installation.

 **TOOLS & EQUIPMENT:** Used in Figures calls out the specific tools and equipment recommended for this process.

 **REVISION MARK:** This mark highlights a change in installation with respect to previous issue.

 **SAFETY TORQUE:** This mark indicates that torque is related to safety.

Care must be taken when installing this accessory to ensure damage does not occur to the vehicle. The installation of this accessory should follow approved guidelines to ensure a quality installation.



These guidelines can be found in the “Toyota and Scion Accessory Installation Practices” or “Lexus Accessory Installation Practices” document.

This document covers such items as:

- Installation Instructions
- Safety
- Vehicle Protection
- Vehicle Disassembly/Reassembly
- Electrical Component Disassembly/Reassembly
- Use of Special Chemicals
- Temperature
- Torque Recheck
- Window Label Installation
- TPMS Check

Please refer to ETAS for a copy of this document.

#### **PRECAUTIONS FOR INSTALLATION:**

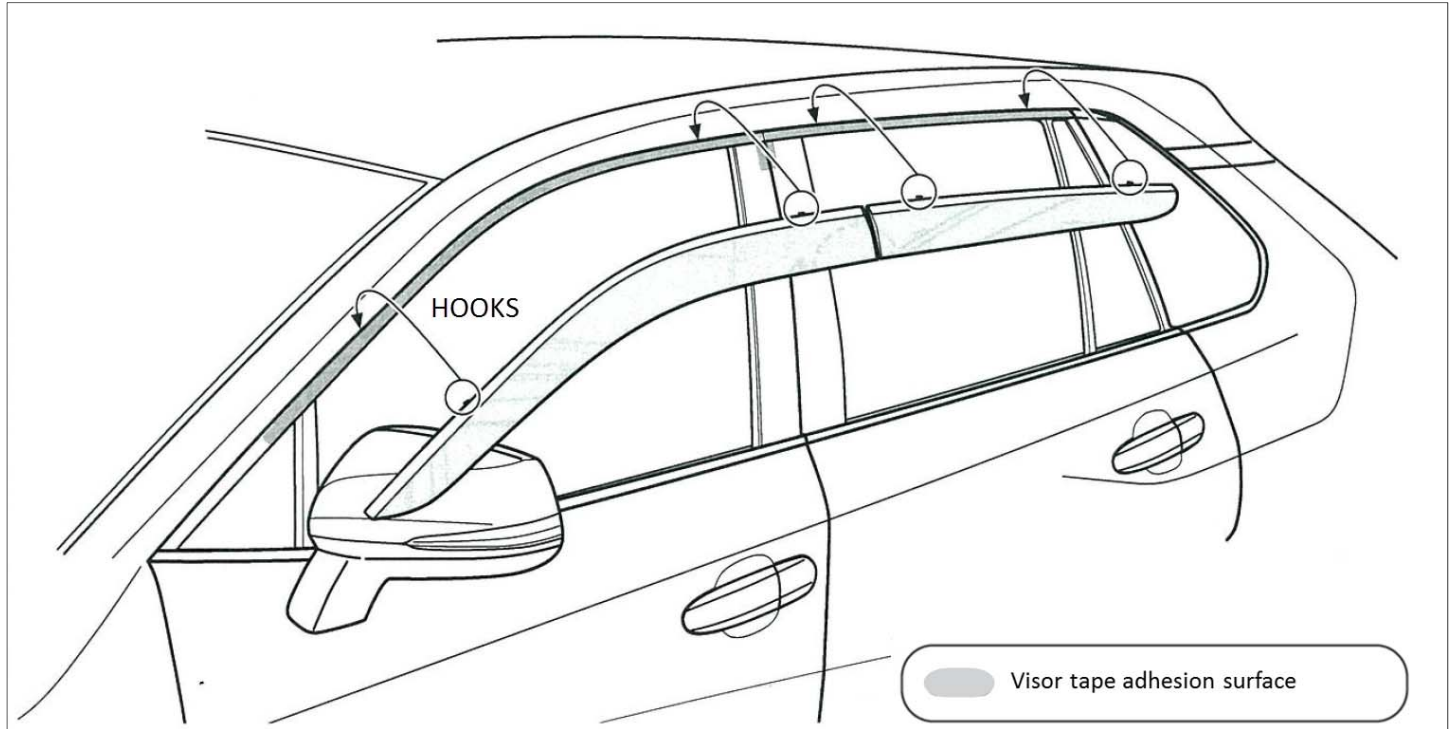
Contents indicated by  and  in this manual must be carefully followed during the installation. If they are ignored, functions of the accessory maybe hindered, as well as personal injury or damage to the vehicle may result. Always carry out the installation as instructed.

When the vehicle parts are removed, keep all tapping screws, bolts and nuts organized so that the re-assembly will proceed correctly.

Do NOT remove vehicle parts except for those that are specified in the manual.

NOTE: Pictures depicted in this Installation Manual may not reflect the current model and model year vehicle.

Side Window Visor Kit Contents				
No	Part Name			QTY
1	Side visor (front)	R H	_____	1
		L H	_____	1
2	Side visor (rear)	R H	_____	1
		L H	_____	1



Installation instructions are shown for driver side. Repeat the same process for the passenger side.

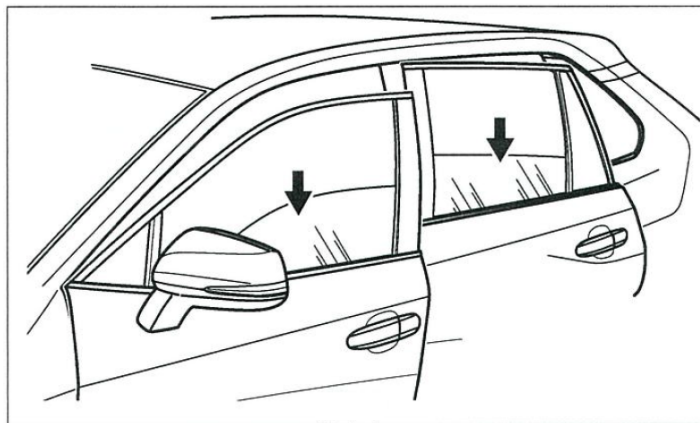


Fig. 1

 Alcohol wipe (C0500-99998 or equivalent)

**Step 1**

Open doors. Lower windows.

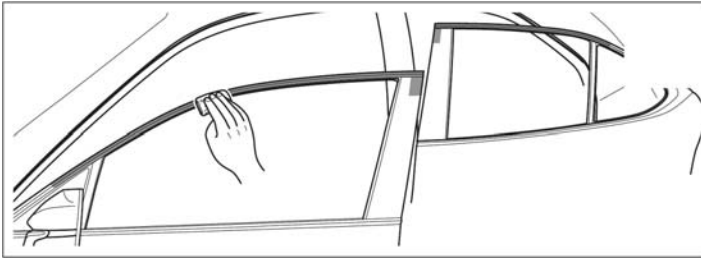



Fig. 2

Clean tape adhesion surface marked  in Fig. 2.  
Let dry before proceeding to next step.



Wipe in one direction only to avoid scratching.

Inadequate surface cleaning will compromise adhesive performance, which can lead to visor peeling.

**DO NOT USE** adhesive promotor.

Pre-heat door frame to 25C°.

## Step 2

Locate slit in the backing paper.

Peel backing paper 80mm – 50mm from centre as indicated in Fig. 3.



Peel and fix backing paper **DOWN**. If you bend backing paper up, the hooks will prevent you from peeling the backing.

Do not peel more than the indicated distance from centre. Exposed tape will adhere to the vehicle and compromise your installation.

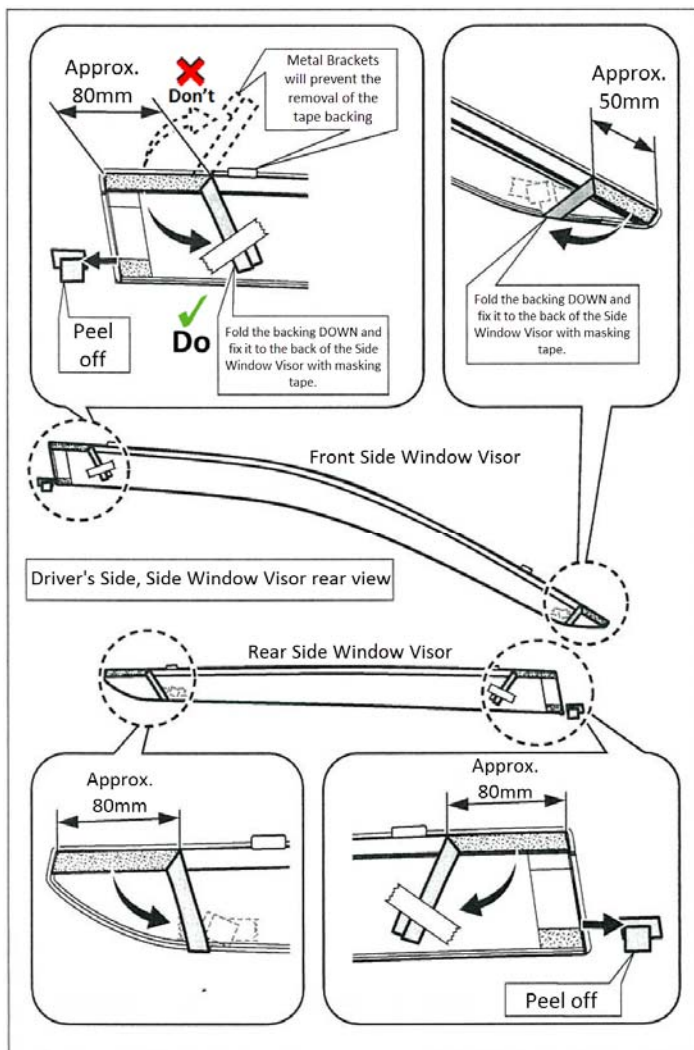


Fig. 3

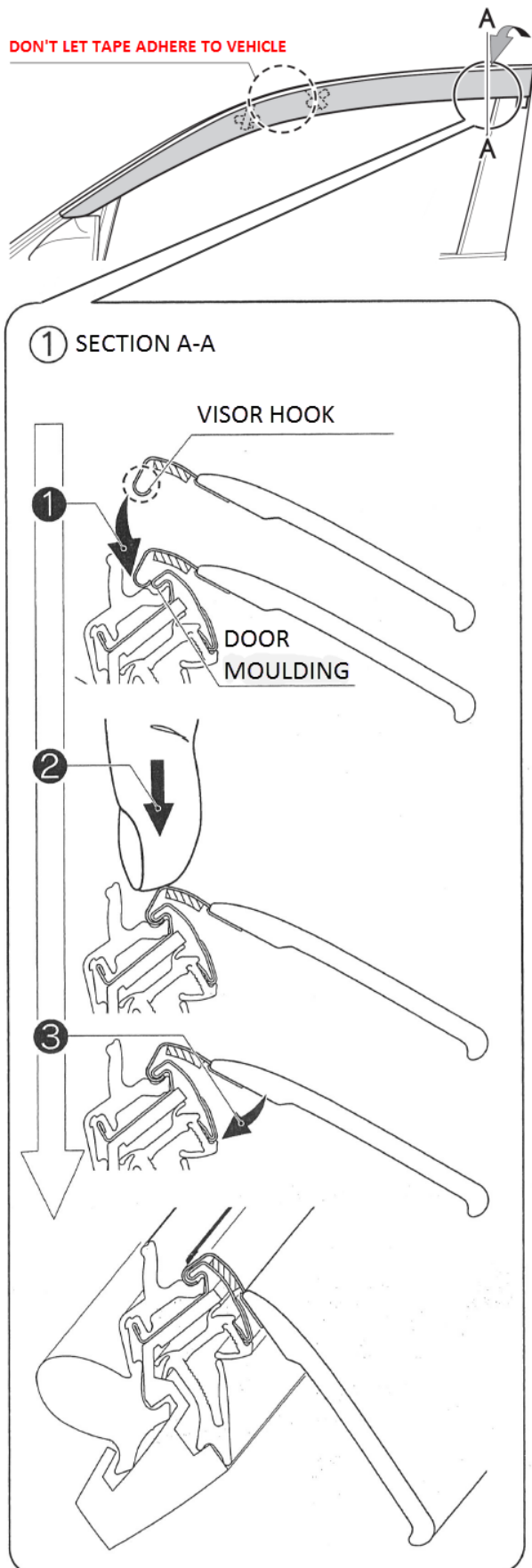



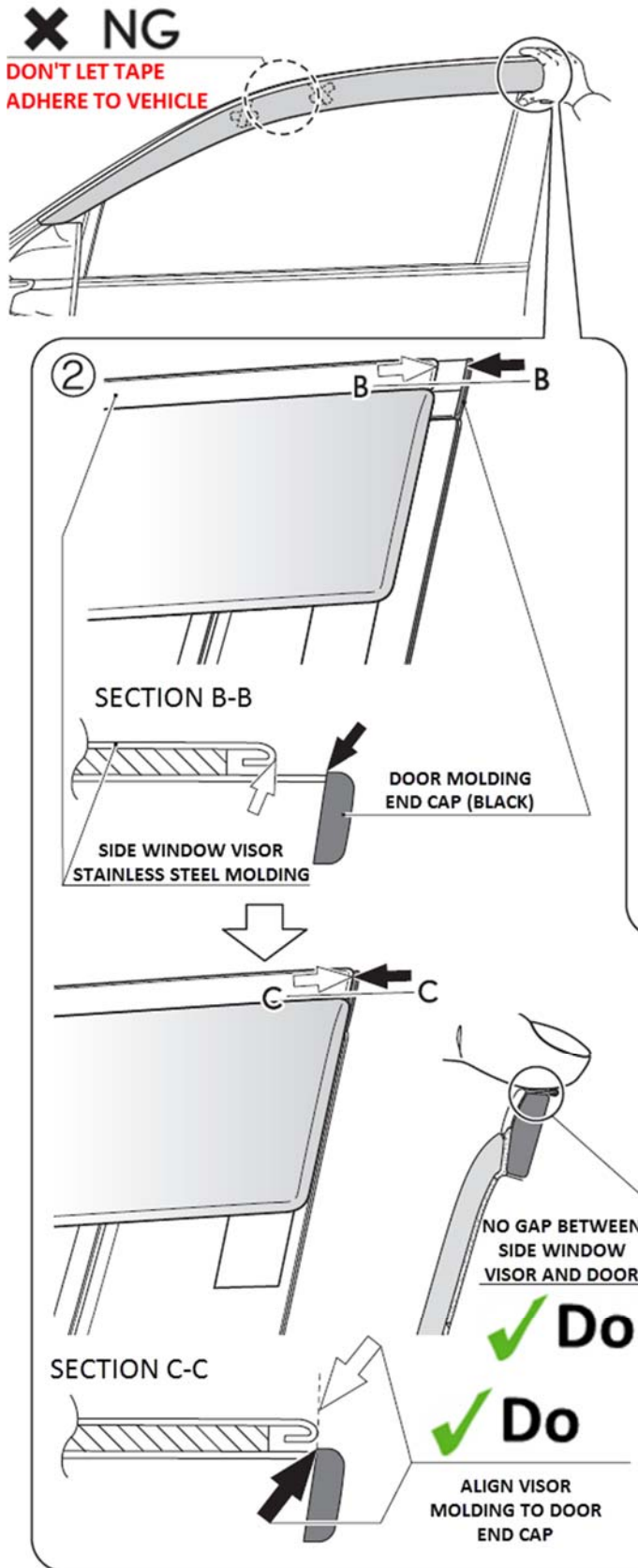
Fig. 4

**Step 3**

Hook front visor on door molding. Refer to Fig. 4, Section A-A.

 Do not let centre portion of the tape, from which backing paper was removed in Step 2, adhere to the door.

Adhesion performance of the tape will be significantly diminished if tape is applied and then peeled off.



**Step 4**

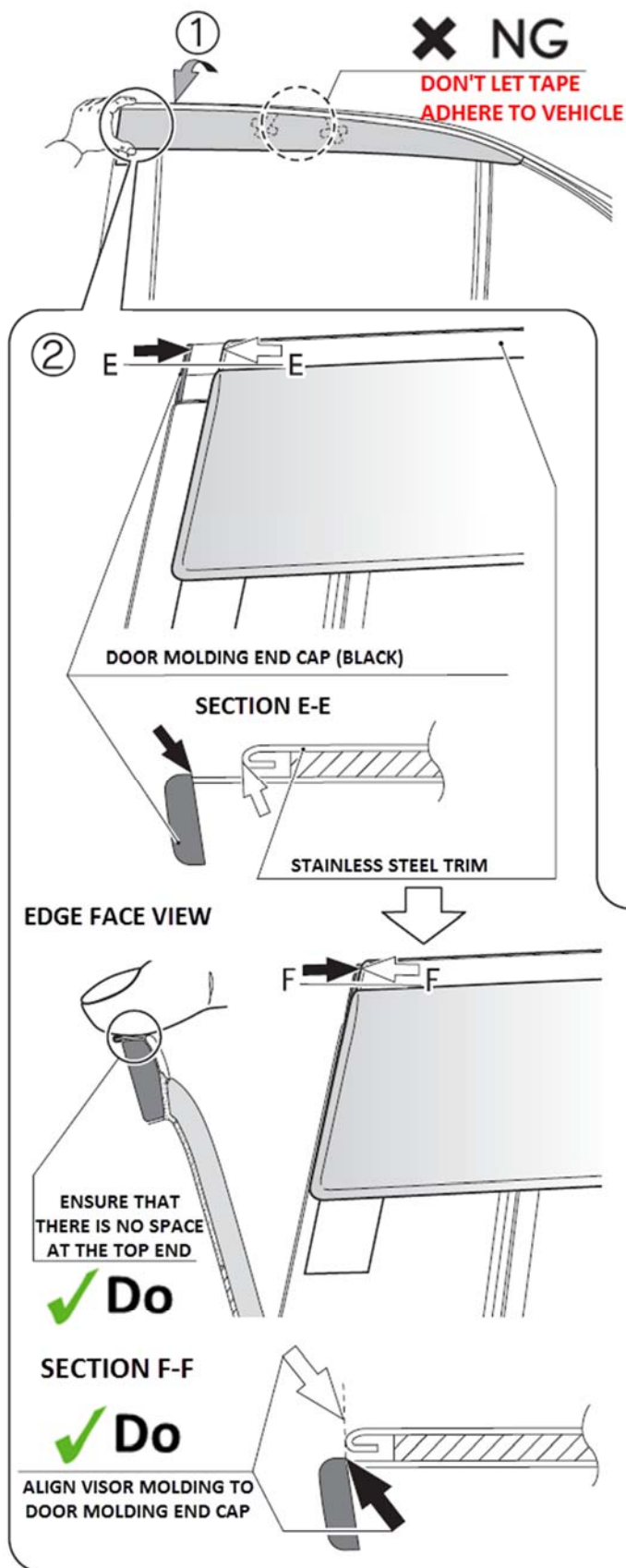
Position front visor as shown in Fig. 5. Ensure that the visor moulding is aligned with the black endcap of the vehicle's door as shown in Fig. 5, Section C-C.

After determining the visor position, adhere the centre section of the tape.

**⚠** Adhesion performance of the tape will be significantly diminished if tape is applied and then peeled off.

Fig. 5





**Step 5**

Hook rear visor on the door molding, in the same manner as the front visor.

Refer to Section A-A of Fig. 4 for hook-to-door relationship.

**⚠** Do not let centre portion of the tape, from which backing paper was removed in Step 2, adhere to the door.

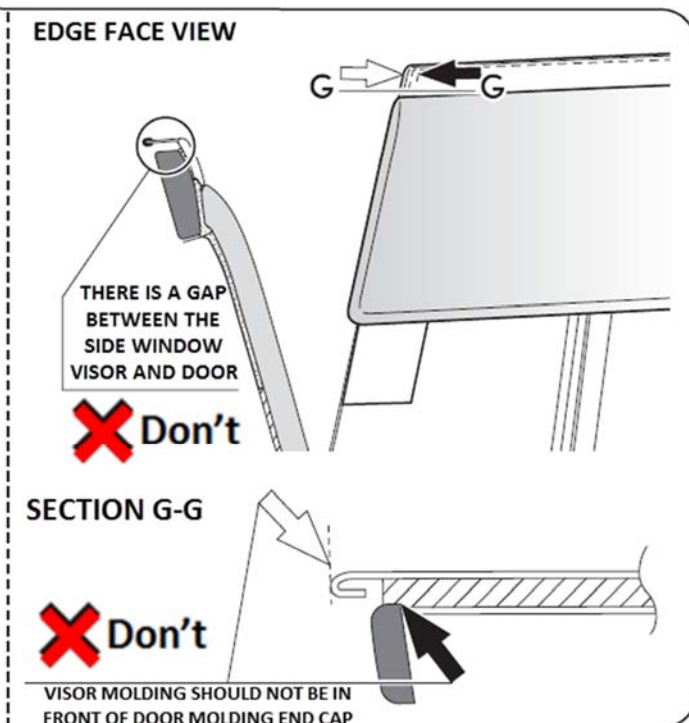
Adhesion performance of the tape will be significantly diminished if tape is applied and then peeled off.

**Step 6**

Position rear visor as shown in Fig. 6. Ensure that the visor moulding is aligned with the black endcap of the vehicle's door as shown in Fig. 6, Section F-F.

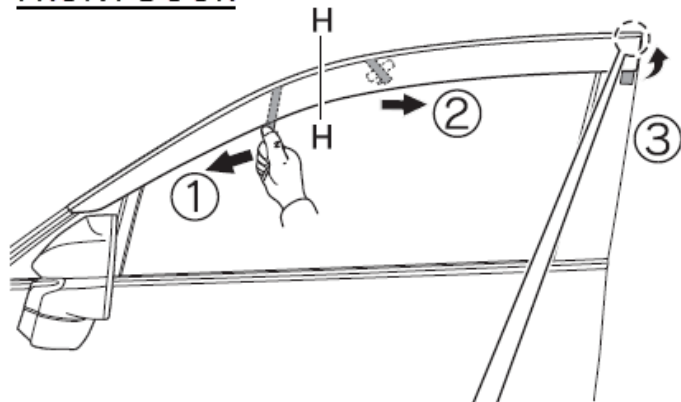
After determining the visor position, adhere the centre section of the tape.

**⚠** Adhesion performance of the tape will be significantly diminished if tape is applied and then peeled off.

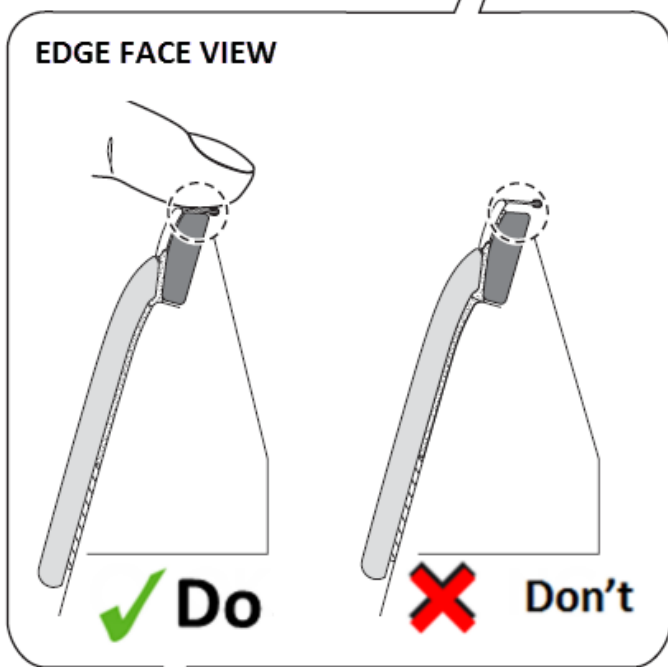


**Fig. 6**

**FRONT DOOR**



**EDGE FACE VIEW**



**REAR DOOR**

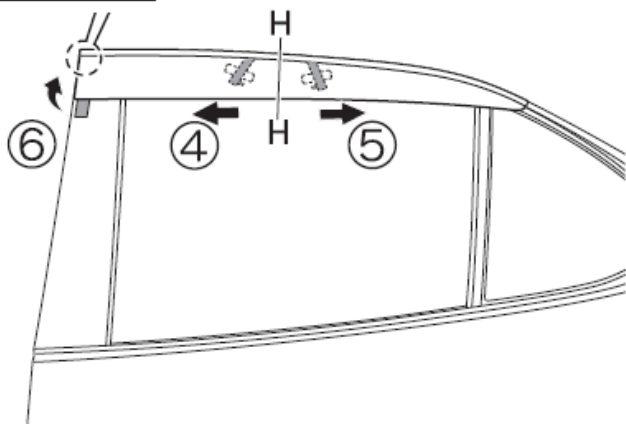


Fig. 7-1

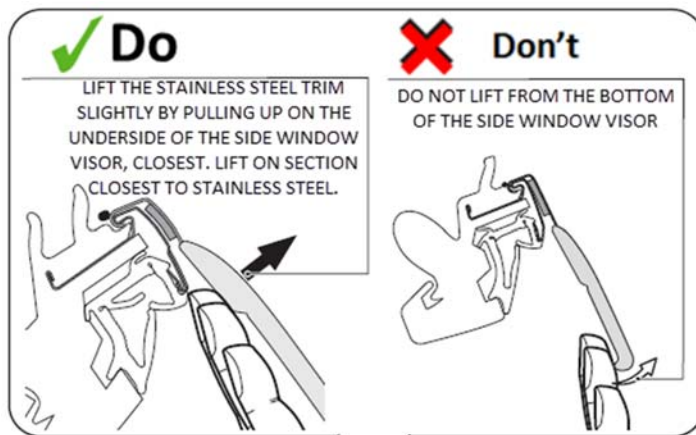
**Step 7**

Hold visor in position by pressing on the visor at the tape (at the molding).

Remove backing paper from tape in sequence (1) to (6) as shown in Fig. 7-1.

Take care not to twist the backing paper.

When removing the backing paper, you may gently lift the visor toward you as shown in Fig. 7-2 below. Note that pulling the visor from the bottom does not make removing the backing paper easier.



**SECTION H-H**

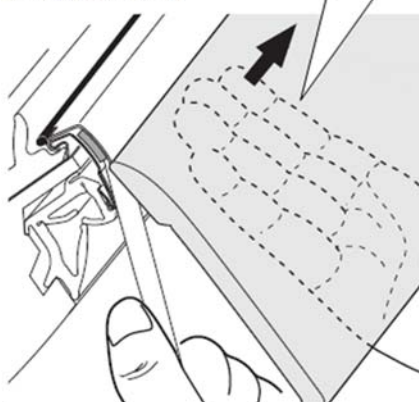
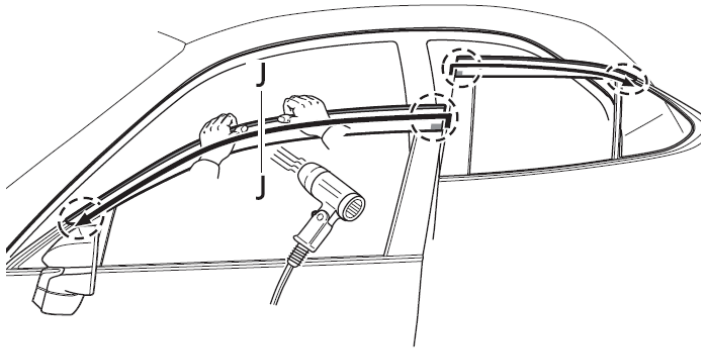


Fig. 7-2






 Heat gun

### Step 8

Use a heat gun to evenly warm up visors at the tape adhesion area to about 40°C. Push on the visors at the tape (49N, or enough to shake vehicle).



Inadequate adhesion, particularly at the leading and trailing edges of the visors (marked with  in Fig. 8), can lead to visor separation, peeling, water intrusion, or excess noise.

Be careful not to burn yourself.

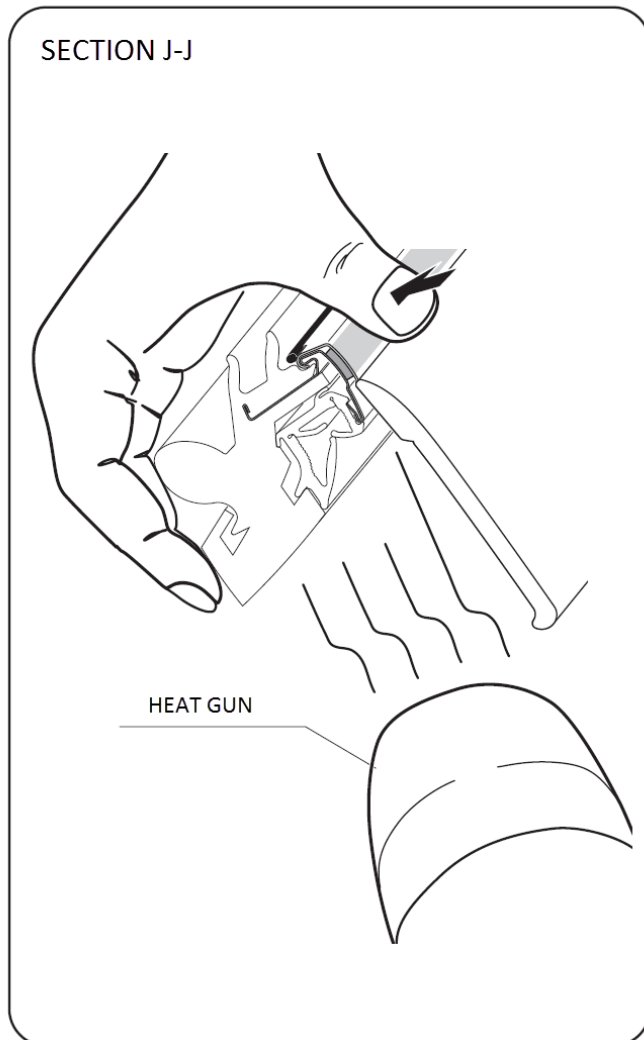


Fig. 8

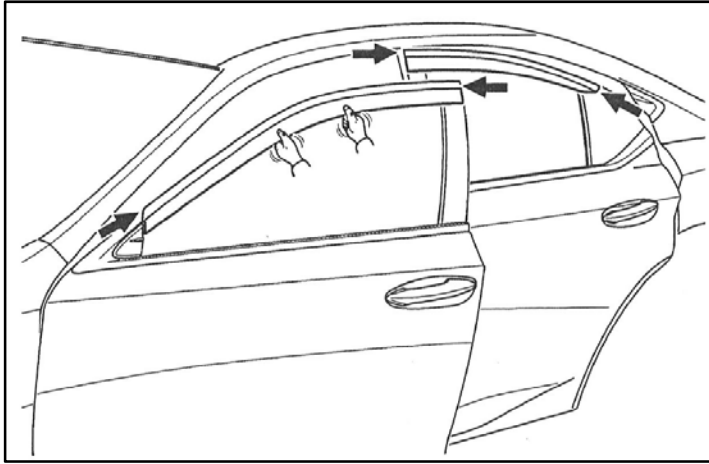


Fig. 9

**Step 9**

Visually check visor adhesion.

View in the arrow direction to double check the adhesion at the leading and trailing edges of the visors.

Gently pull on the visors toward you to reconfirm visor attachment.



Do not let visor get wet for 20 minutes. Excess moisture can compromise tape adhesion.

Checklist – these points **MUST** be checked to ensure a quality installation.

<b>Check:</b>	<b>Look For:</b>
<p><u>Accessory Function Checks</u></p> <p><input type="checkbox"/> Check alignment to vehicle as per Fig. 5, 6. Open and close vehicle doors slowly and verify swing clearance.</p> <p><input type="checkbox"/> Visually check tape adhesion to vehicle. Verify all tape, including the lower tape at B-pillars.</p>	<ol style="list-style-type: none"> <li>1. Proper alignment of side window visor, ensure that the side window visor does not hit the car during open/close of door.</li> <li>2. Any gaps between the tape and door, and/or left-over tape backing.</li> </ol>
<p><u>Vehicle Function Checks</u></p> <p><input type="checkbox"/> Open and close front windows to ensure no interference with the side window visor.</p>	<ol style="list-style-type: none"> <li>1. Clearance between the side window visor and window glass. The glass should open and close without hitting the side window visor.</li> </ol>