

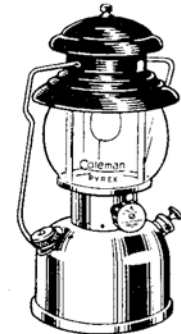
PARTS LIST

202

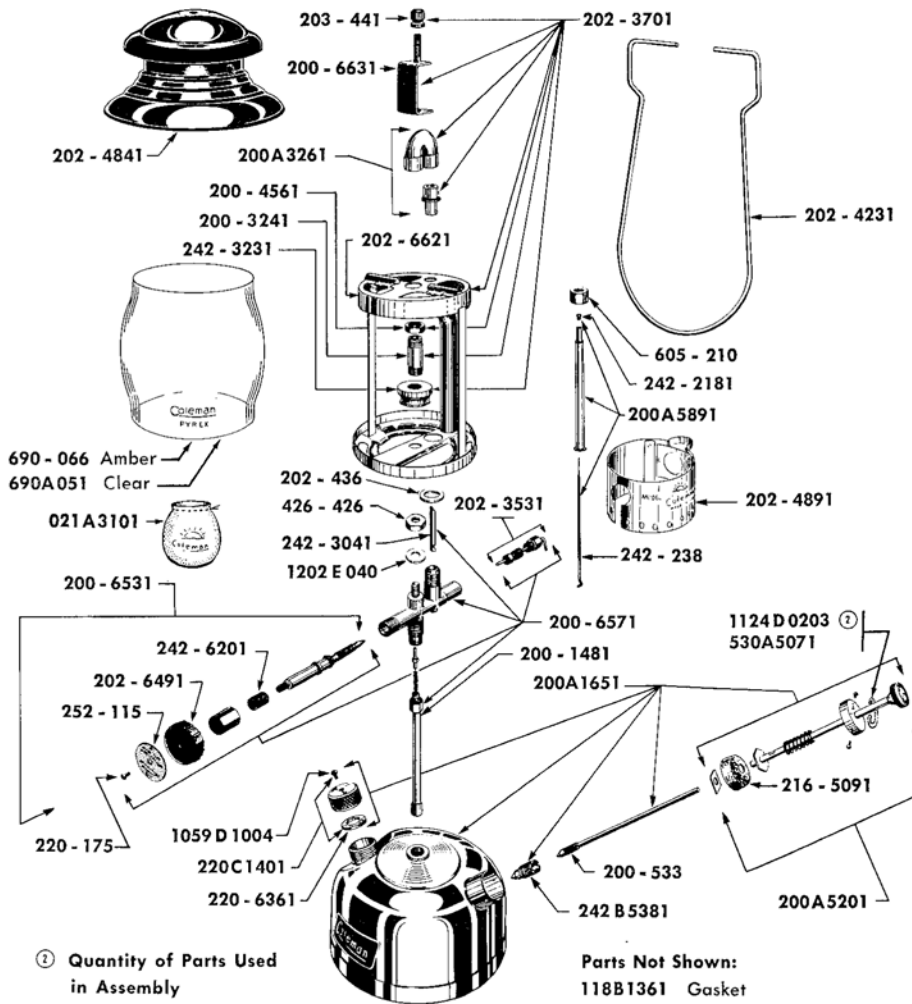
**INSTANT LIGHT GASOLINE
SINGLE MANTLE**

COLEMAN LANTERNS

LANTERNS



Model 202
(Discontinued)



MODEL 202 SHOWN

MODEL	FINISH	
	Fount	Ventilator (Porcelain)
202	Nickel	Green (5½")

PART NO.	DESCRIPTION	USED ON	PART NO.	DESCRIPTION	USED ON
021A3101	021A Mantle		202 - 6621	Frame	
118B1361	Filler Cap Gasket (Used only with obsolete 220B1401)		202 - 6631	Ventilator Bracket — Replaced by 200-6631	
200 - 1481	Tube Ass'y (Fuel and Air)		203 - 441	Ball Nut	
200 - 3241	Burner Tube		216 - 5091	Pump Cup	
200 - 4561	Lock Nut (½" — 32 Hex, Brass)		220 - 175	Self Tapping Screw (#4—40 x ⅜")	
200 - 533	Air Stem (Can be used for 242B532)		220 - 6361	Filler Cap Gasket and Disc Ass'y (May be used as replacement on all Filler Caps.)	
200 - 6531	Valve Stem Ass'y		220 C1401	Filler Cap Complete	
200 - 6571	Fuel Valve Complete (Less Generator)		242 - 2181	Gas Tip (Marked 6")	
200 - 6631	Ventilator Bracket		242 - 238	Needle Ass'y	
200A1651	Fount Complete		242 - 3041	Eccentric Block	
200A3261	"U" Tube and Venturi		242 - 3231	Burner Cap and Screen	
200A5201	Pump Plunger Ass'y		242 - 6201	Valve Stem Packing	
200A5891	T66DL Generator		242B532	Air Stem — Replaced by 200-533	
202 - 1651	Nickel Fount — Replaced by 200A1651		242B5381	Check Valve	
	Red Fount		252 - 115	Direction Disc	
202 - 3531	Tip Cleaner Stem		426 - 426	Palnut (¼" — 20)	
202 - 3701	Burner Ass'y Complete		530A5071	Pump Cap Clip	
202 - 4231	Bail		605 - 210	Jamb Nut	
202 - 436	Frame Washer (⅝" x ⅝" x ¼" Stnls. Steel)		690 - 066	550A Amber Pyrex Globe — Accessory	
202 - 4841	Ventilator		690A051	550 Clear Pyrex Globe	
202 - 4891	Globe Base Rest		1059D1004	Machine Screw (10—32 x ¼" Rd. Hd. Nickel Plated Br.)	
202 - 6491	Valve Wheel		1124D0203	Sheet Metal Screw (#2 x ⅜" Type Z, Bd. Hd.) (Used on earlier models)	
202 - 6531	Stem Ass'y — Replaced by 200-6531		1202E040	Washer (⅝" O. D. x ⅝" I. D. x ⅜" Stnls. Steel)	
202 - 6571	Fuel Valve Complete — Replaced by the 200-6571				