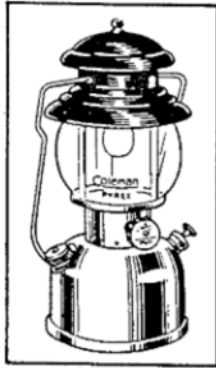
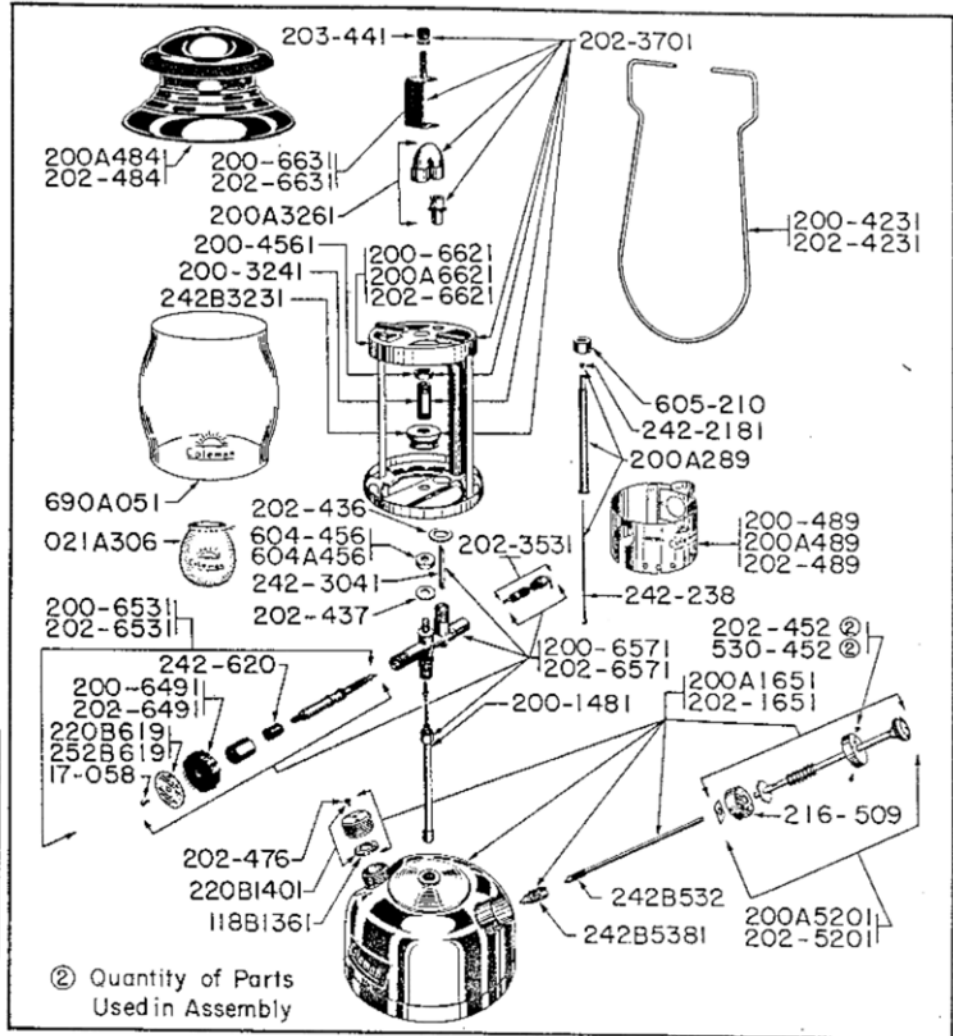
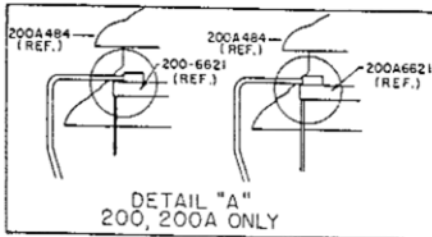


PARTS LIST FOR COLEMAN LANTERNS
200, 200A, 202
 INSTANT LIGHT **GASOLINE** SINGLE MANTLE
 (Model 202 Shown)



Model 200, 200A, 202

MODEL	FINISH	
	Fount	Ventilator (Porcelain)
200	Nickel	Red (5 1/2")
200A	Red	Red (5 1/2")
202	Nickel	Green (5 1/2")



PART NUMBER	DESCRIPTION	USED ON MODELS
17-058	Machine Screw (#4—36x 1/4 Rd. Hd. Brass)	
021A306	(21A) Mantle (Pk'd 2)	
118B1361	Gasket (Filler Plug)	
200-1481	Tube Assy. (Fuel and Air)	
200-3241	Tube (Burner)	
200-4231	Bail	200, 200A only
200-4561	Nut (Lock—1/2—32 Hex Brass)	
200-489	Base Rest	200 only
200-6491	Wheel (Valve)	200, 200A only
200-6531	Stem Assy.	200, 200A only
200-6571	Valve (Less Generator)	200, 200A only
200-6621	Frame	See Detail "A"
200-6631	Bracket (Ventilator)	200, 200A only
200A1651	Fount (Complete)	200, 200A only
200A289	(T66DL) Generator	
200A3261	"U" Tube & Venturi	
200A484	Ventilator	200, 200A only
200A489	Base Rest	200A only
200A5201	Plunger Assy. (Pump)	200, 200A only
200A6621	Frame	See Detail "A"
202-1651	Fount (Complete)	202 only
202-3531	Stem (Tip Cleaner)	
202-3701	Burner Assy. (Complete)	202 only
202-4231	Bail	202 only
202-436	Washer (3/8x3/8x1/4 Stnls. Stl.)	202 only
202-437	Washer (1/4x3/8x1/4 Stnls. Stl.)	202 only
202-452	Screw (Self-Tapping—#2x 1/8 type C Bd. Hd. Stnls. Stl.)	202 only

PART NUMBER	DESCRIPTION	USED ON MODELS
202-476	Machine Screw (10—32x 1/4 Rd. Hd. nickel plated brass)	202 only
202-484	Ventilator	202 only
202-489	Base Rest	202 only
202-5201	Plunger Assy. (Pump)	202 only
202-6491	Wheel (Valve)	202 only
202-6531	Stem Assy.	202 only
202-6571	Valve (less Generator)	202 only
202-6621	Frame	202 only
202-6631	Bracket (Ventilator)	202 only
203-441	Nut (Ball)	
216-509	Leather (Pump)	
220B1401	Filler Plug	
220B619	Disc (Direction)	200, 200A only
242-2181	Gas Tip (Mk'd 6)	
242-238	Needle Assy.	
242-3041	Eccentric Block	
242-620	Packing (Valve Stem)	
242B3231	Cap (Burner)	
242B532	Stem (Air)	
242B5381	Check Valve	
252B619	Disc (Direction)	202 only
530-452	Screw (Sheet Metal—#2x 1/8 type Z Bd. Hd.)	200, 200A only
604-456	Nut (1/4—20 Hex Brass)	202 only
604A456	Nut (1/4—20 Hex Stl.)	200, 200A only
605-210	Jamb Nut	
690A051	(550) Globe	