

WARNING:

- 1.For pets only.
- 2.Do not leave pet in stroller unattended.
- 3.Always apply the brake whenever the stroller is stationary.
- 4.The maximum weight capacity is 60lbs.

Cleaning and maintenance:

- 1.Unsnap button on stroller;
- 2.Take apart the canopy;
- 3.Take out the cushion ;
- 4.Wipe stroller slightly.

Executive standard:

This pet stroller meets "PTSM-09726-NA" standard.

Quality certificate:

This manufacturer has passed ISO9001:2008 certificate.

If you have any questions or concerns, please email us at:

help@vivo-us.com

Thank You For Your Purchase!

Visit us online at: www.vivo-us.com



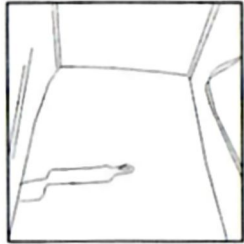
195 East Martin Drive
Goodfield, IL 61742
www.vivo-us.com

V·I·V·O·

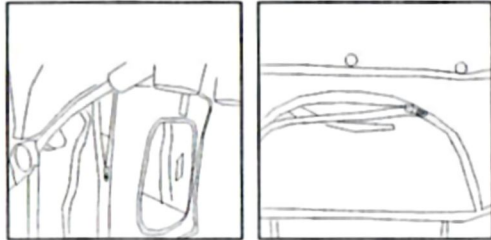
PET STROLLER



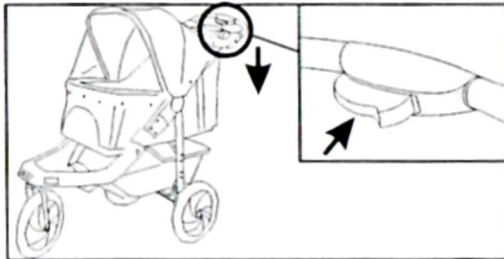
Models:STROLR-V002B
STROLR-V002K
STROLR-V002P



7. Fasten the safety leash with the pet collar.



8. Unzip the mesh to open the window.

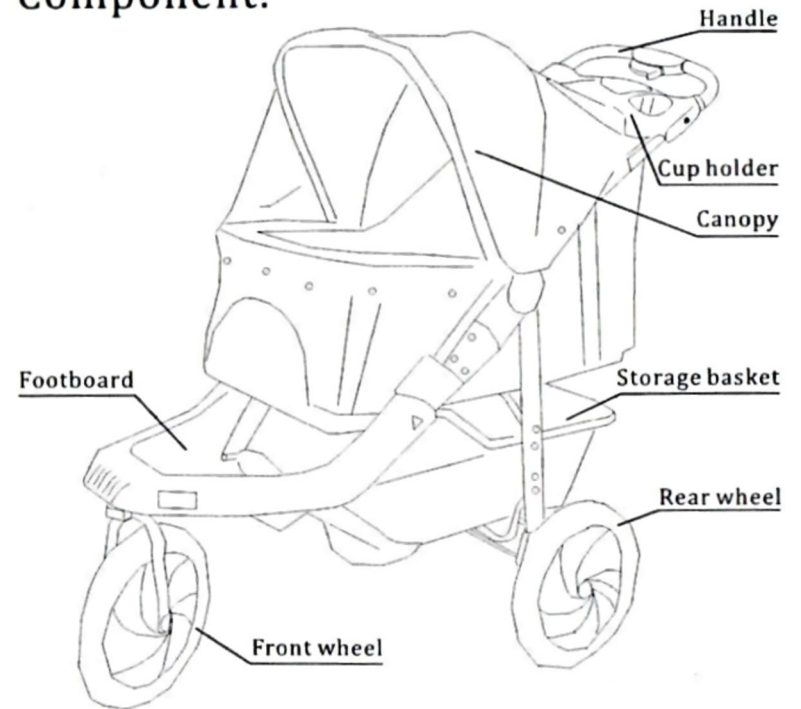


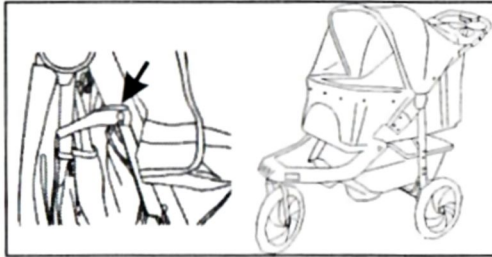
9. Fold the stroller: unzip the canopy window first, then press the folding button as arrow direction to fold the stroller and fasten the folding hook.

Warning:

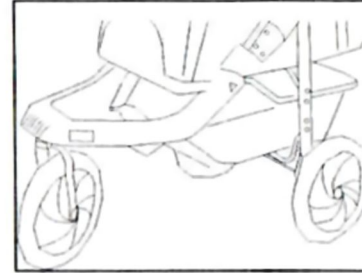
Please make sure the stroller assemble correctly according to installation manual.

Component:

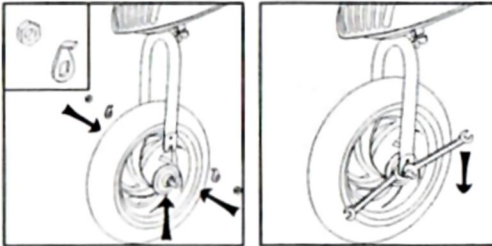




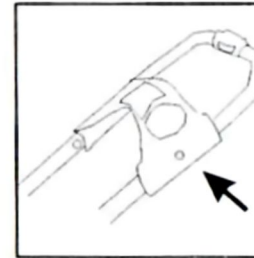
1. To open stroller: release the folding hook as the picture shown, lift the handlebar, unfold the stroller and make sure both joints locked.



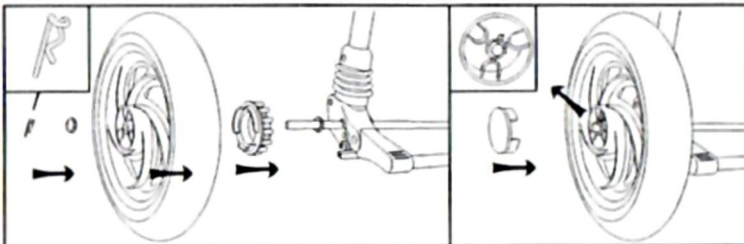
4. To attach footboard: attach footboard position to bottom and tighten screws.



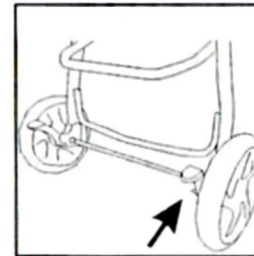
2. Install the front wheel: fix the wheel axle position at U tube groove and attach hook-shaped gasket and tighten both sides nuts. Do make sure the gasket tightened by the two nuts.



5. To attach cup holder: aim at the stake on the handle tube and fix the cup holder.



3. Insert the aided tooth onto the axle first, attach the wheel, gasket, and insert the clip pin through the hole on the axle, then cover the wheel cap as picture shown.



6. To step the brake pole down to stop the stroller, and lift it up to release the brake.