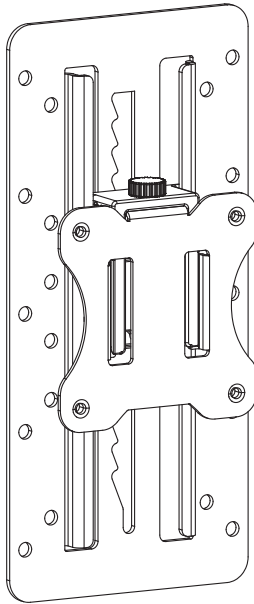


Height Adjustable VESA Adapter

Instruction Manual



SKU: STAND-VAD3/W



Scan the QR code with your mobile device or follow the link for helpful videos and specifications related to this product.

<https://vivo-us.com/products/stand-vad3>

GET IN TOUCH | Monday-Friday from 7:00am-7:00pm CST



help@vivo-us.com



www.vivo-us.com
Chat live with an agent!



309-278-5303



WARNING!

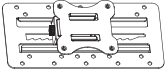
If you do not understand these directions, or if you have any doubts about the safety of the installation, please call a qualified technician. Check carefully to make sure there are no missing or defective parts. Improper installation may cause damage or serious injury. Do not use this product for any purpose that is not explicitly specified in this manual. Do not exceed weight capacity. We cannot be liable for damage or injury caused by improper mounting, incorrect assembly or inappropriate use.



WARNING: CHOKING HAZARD

SMALL PARTS - NOT FOR CHILDREN UNDER 3 YEARS. ADULT SUPERVISION IS REQUIRED.

PACKAGE CONTENTS



A (x1)

VESA Bracket



M-A (x4)

M4x12mm Screw



M-B (x4)

M5x12mm Screw



M-C (x4)

M5 Washer

TOOLS NEEDED



Phillips
Screwdriver

DO NOT EXCEED WEIGHT CAPACITY.

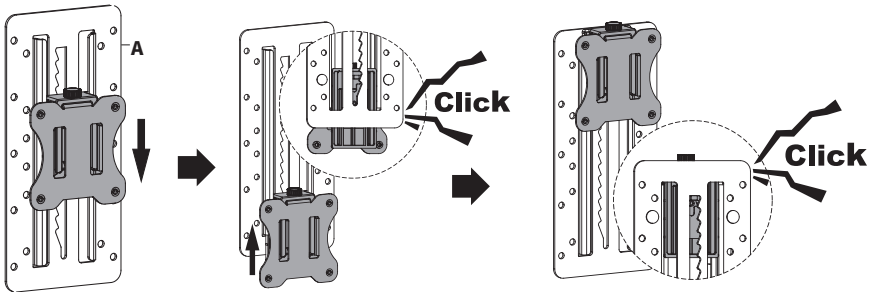
Failure to do so may result in serious injury.



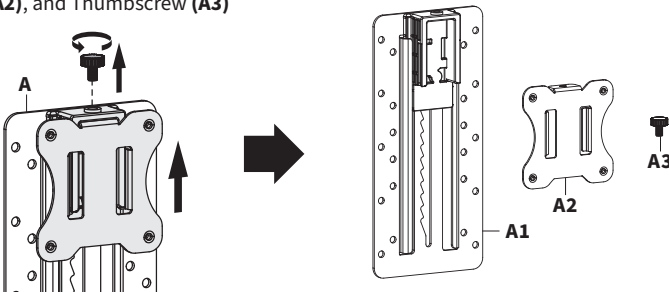
ASSEMBLY STEPS

STEP 1

Lower VESA Bracket (**A**) to the bottom until it clicks, then raise all the way to the top until you hear a second click.

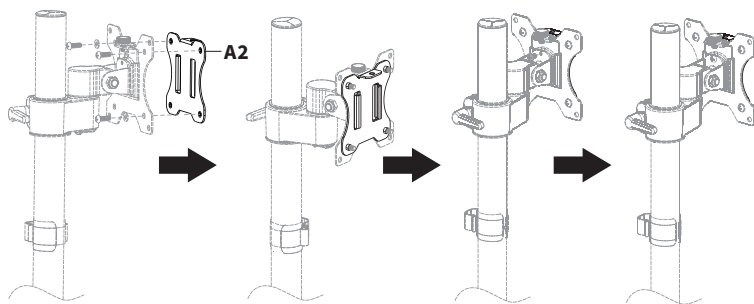


Loosen the Thumbscrew on VESA Bracket (**A**) to separate into three parts: Bracket (**A1**), VESA Plate (**A2**), and Thumbscrew (**A3**)



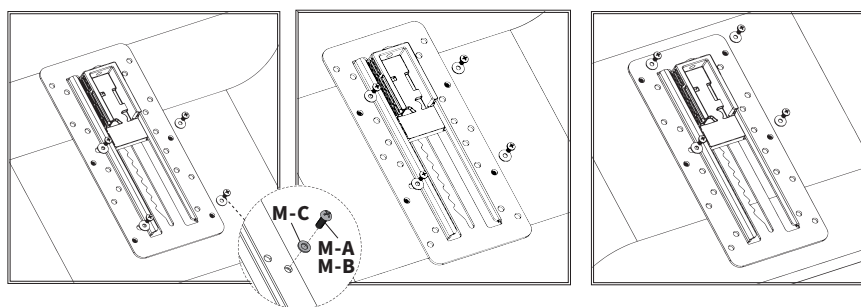
STEP 2

Mount VESA Plate (**A2**) to your monitor mount using the hardware that came with your mount and a Phillips screwdriver, making sure the lip is on top.



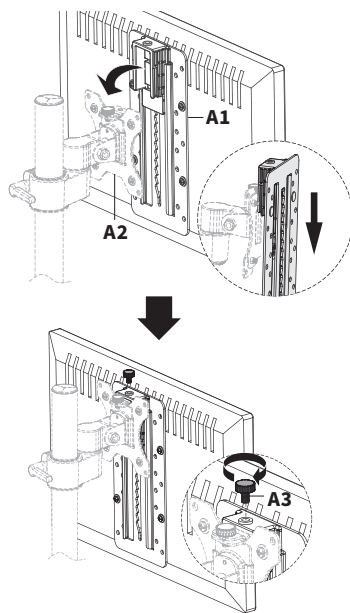
STEP 3

Attach Bracket (**A1**) to the back of the monitor using Screws (**M-A or M-B**) and M5 Washers (**M-C**).



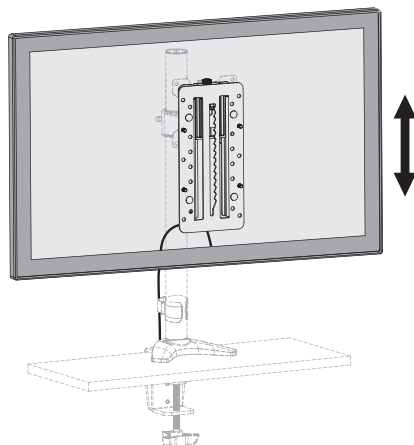
STEP 4

Slide monitor with Bracket (**A1**) onto VESA Plate (**A2**) and secure with Thumbscrew (**A3**).



STEP 5

Adjust monitor to the desired height. The height adjusts in increments of 0.5". To reset the height, lift all the way to the top and then lower to the bottom position.





Love your new VIVO setup and want to share?
Tag us in your photo! **@vivo_us**

LAST UPDATED: 05/17/2023
REV1



Open **Monday - Friday 7:00am - 7:00pm CST**,
our dedicated support team can offer immediate assistance with rapid response times. If any
parts are received damaged or defective, please contact us. We are happy to replace parts to
ensure you have a fully functioning product.



309-278-5303

AVG. RESOLUTION TIME (*within office hrs*): **5M 4S**



www.vivo-us.com
Chat live with an agent!

AVG. RESOLUTION TIME (*within office hrs*): **< 15 M**



help@vivo-us.com

AVG. RESPONSE TIME (*within office hrs*): **1HR 8M**

- 23% within < 15m
- 38% within < 30m
- 61% within < 1hr
- 83% within < 2hr
- 92% within < 3hr