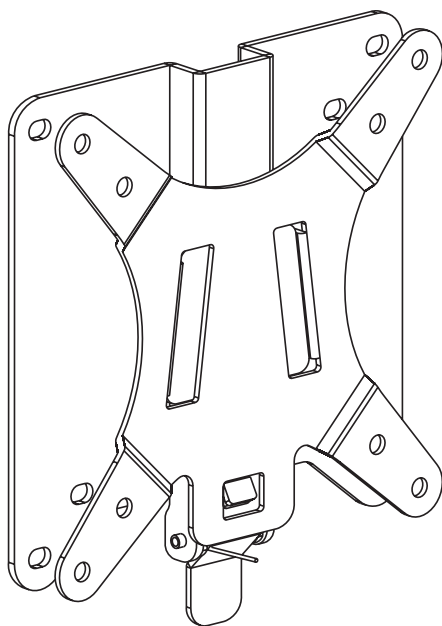


VESA Quick Release Adapter

Instruction Manual



SKU: STAND-VAD2/W



Scan the QR code with your mobile device or follow the link for helpful videos and specifications related to this product.

<https://vivo-us.com/products/stand-vad2>

GET IN TOUCH | Monday-Friday from 7:00am-7:00pm CST



help@vivo-us.com



www.vivo-us.com
Chat live with an agent!



309-278-5303



WARNING!

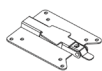
If you do not understand these directions, or if you have any doubts about the safety of the installation, please call a qualified technician. Check carefully to make sure there are no missing or defective parts. Improper installation may cause damage or serious injury. Do not use this product for any purpose that is not explicitly specified in this manual. Do not exceed weight capacity. We cannot be liable for damage or injury caused by improper mounting, incorrect assembly or inappropriate use.



WARNING: CHOKING HAZARD

SMALL PARTS - NOT FOR CHILDREN UNDER 3 YEARS. ADULT SUPERVISION IS REQUIRED.

PACKAGE CONTENTS



A (x1)

VESA Bracket



B (x1)

VESA Plate



M-A (x8)

M4x12mm Screw



M-B (x4)

M4x30mm Screw



M-C (x4)

M4 Spacer



M-D (x4)

M4 Washer



M-E (x4)

M4 Nut

TOOLS NEEDED

NOTE: SOME HARDWARE INCLUDED MAY NOT BE USED



Phillips
Screwdriver

DO NOT EXCEED WEIGHT CAPACITY.

Failure to do so may result in serious injury.

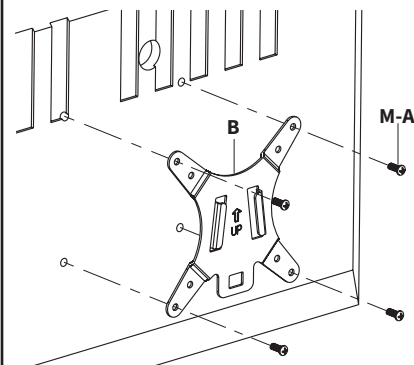


ASSEMBLY STEPS

STEP 1

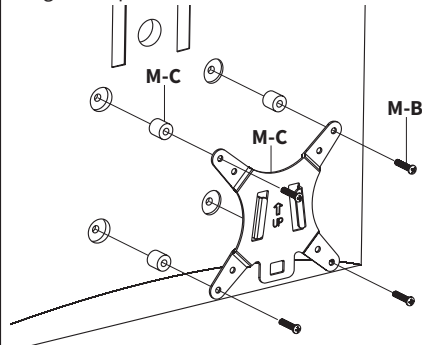
OPTION A: Flat Back Monitor

Install VESA Plate (**B**) to back of Monitor using M4x12mm Screws (**M-A**) and a Phillips screwdriver.



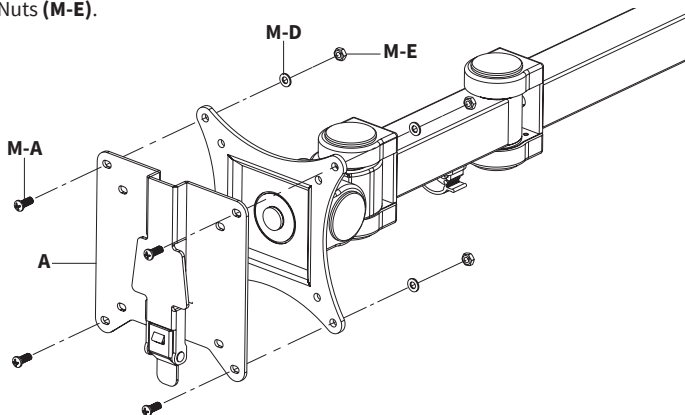
OPTION B: Curved Back Monitor

Install the VESA Plate (**B**) to back of Monitor using M4x30mm Screws (**M-B**) and M4 Spacers (**M-C**) using a Phillips screwdriver.



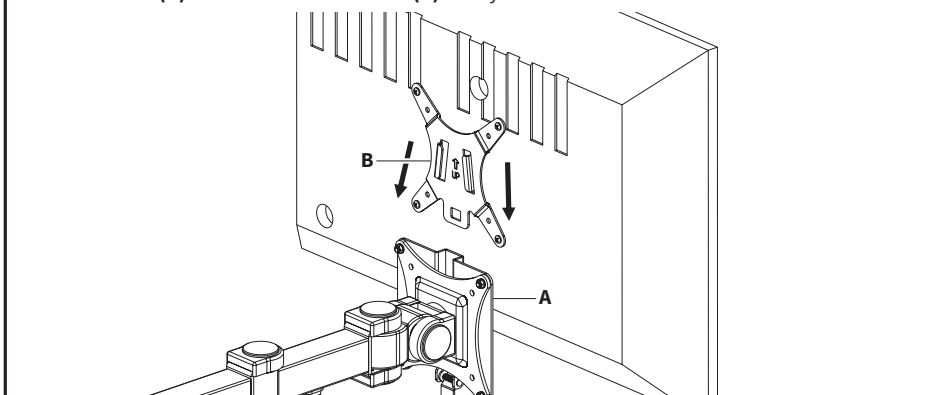
STEP 2

Connect VESA Bracket (**A**) to your existing monitor mount using M4x12mm Screws (**M-A**), M4 Washers (**M-D**), and M4 Nuts (**M-E**).



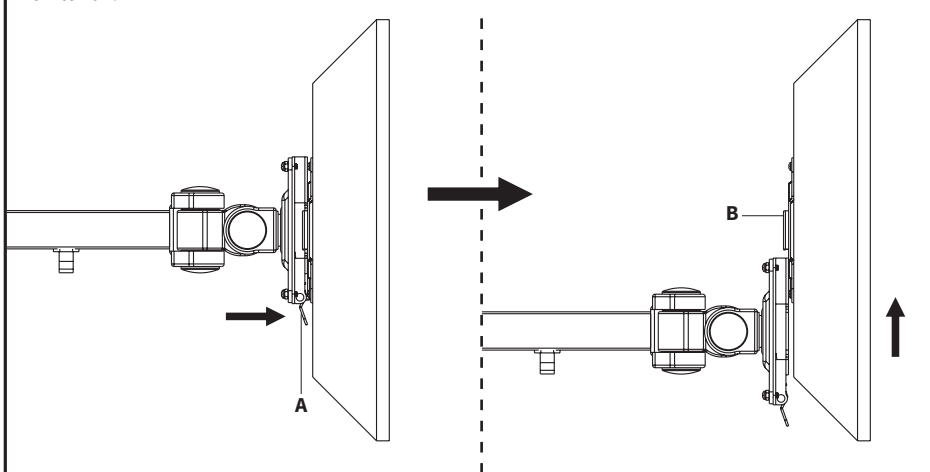
STEP 3

Slide VESA Plate (**B**) down onto VESA Bracket (**A**) until you hear a click.



STEP 4

To detach VESA Plate (**B**), hold the lever on VESA Bracket (**A**) down to release the latch and lift the monitor off.





Open **Monday - Friday 7:00am - 7:00pm CST**,
our dedicated support team can offer immediate assistance with rapid response times. If any parts are received damaged or defective, please contact us. We are happy to replace parts to ensure you have a fully functioning product.



309-278-5303

AVG. RESOLUTION TIME *(within office hrs):* **5M 4S**



www.vivo-us.com
Chat live with an agent!

AVG. RESOLUTION TIME *(within office hrs):* **< 15 M**



help@vivo-us.com

AVG. RESPONSE TIME *(within office hrs):* **1HR 8M**

- 23% within < 15m
- 38% within < 30m
- 61% within < 1hr
- 83% within < 2hr
- 92% within < 3hr