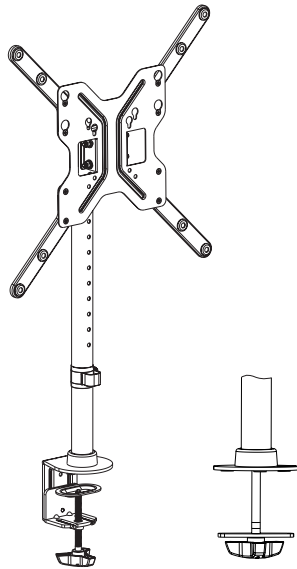




Single Wide Screen TV Desk Mount

Instruction Manual



SKU: STAND-V155C



Scan the QR code with your mobile device or follow the link for helpful videos and specifications related to this product.

<https://vivo-us.com/products/stand-v155c>

GET IN TOUCH | Monday-Friday from 7:00am-7:00pm CST



help@vivo-us.com



www.vivo-us.com
Chat live with an agent!



309-278-5303

WARNING!

If you do not understand these directions, or if you have any doubts about the safety of the installation, please call a qualified technician. Check carefully to make sure there are no missing or defective parts. Improper installation may cause damage or serious injury. Do not use this product for any purpose that is not explicitly specified in this manual. Do not exceed weight capacity. We cannot be liable for damage or injury caused by improper mounting, incorrect assembly or inappropriate use.

TIPOVER WARNING

SERIOUS OR FATAL CRUSHING INJURIES CAN OCCUR FROM TIPOVER. TO HELP PREVENT TIPOVER:

- NEVER ALLOW CHILDREN TO CLIMB, STAND, HANG, OR PLAY ON ANY PART OF MONITOR OR STAND.
- USE TIPOVER RESTRAINT OR ANCHOR STAND TO WALL

USE OF TIPOVER RESTRAINTS MAY ONLY REDUCE, BUT NOT ELIMINATE RISK OF TIPOVER.

WARNING: CHOKING HAZARD

SMALL PARTS - NOT FOR CHILDREN UNDER 3 YEARS. ADULT SUPERVISION IS REQUIRED.

PACKAGE CONTENTS



A (x1)
VESA Plate



B (x1)
Pole



C (x1)
Pole Cap



D (x1)
Clamp



E (x1)
Cable Clip



F (x1)
Decorative
Cover



G (x1)
Grommet Base
Plate



H (x5)
Rubber Pad



I (x1)
Grommet Plate



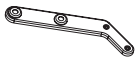
J (x1)
3mm Allen
Wrench



K (x1)
4mm Allen
Wrench



L (x2)
Arm



M (x2)
Arm



N (x8)
Screw



O (x2)
Bolt



P (x2)
Nut



Q (x1)
Wrench



M-A (x4)
M5x14



M-B (x4)
M6x14



M-C (x4)
M6x30



M-D (x4)
M8x30



M-E (x4)
M8x50



M-F (x4)
D5 Washer



M-G (x4)
D8 Washer



M-H (x8)
D8 Washer



M-I (x8)
Spacer

NOTE: NOT ALL HARDWARE INCLUDED WILL BE USED



ASSEMBLY STEPS

STEP 1

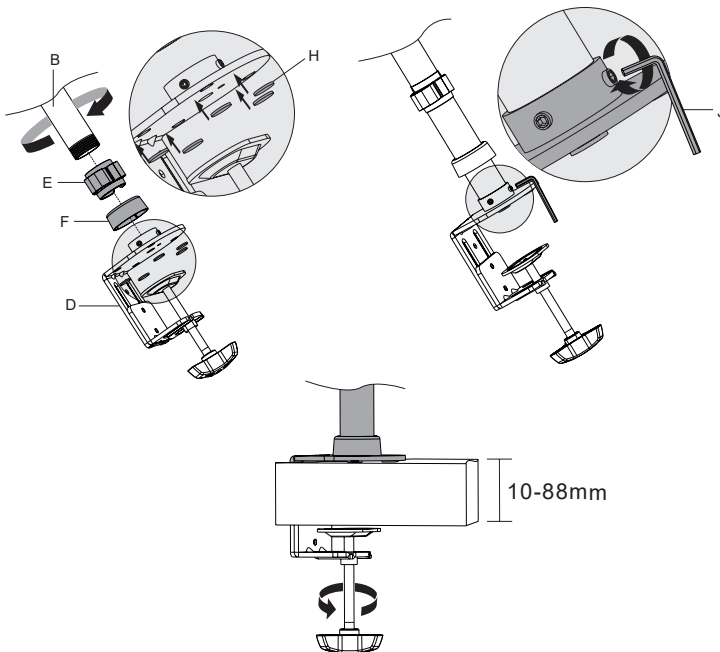
Place pole cap (C) onto pole (B).



STEP 2

OPTION A: Clamp Installation

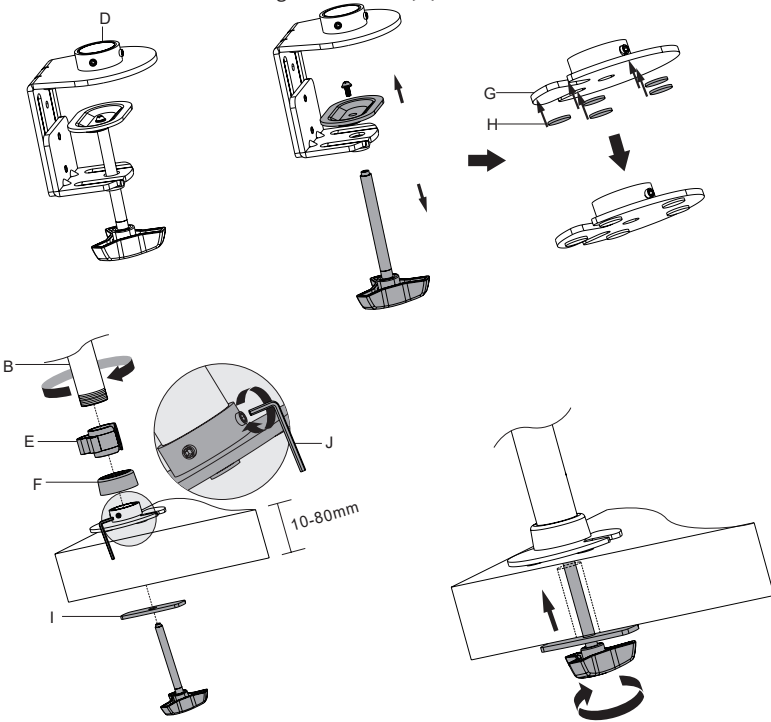
Slide cable management clip (E) and decorative cover (F) onto pole (B). Thread pole (B) into base of clamp (D) until snug, then back off until the mounting holes are facing forward. Tighten grub screws with allen wrench (J) as shown in diagram. Slide decorative cover (F) down. Apply rubber pads (H) as shown in diagram. Secure clamp (D) to desk.



STEP 2 (Continued)

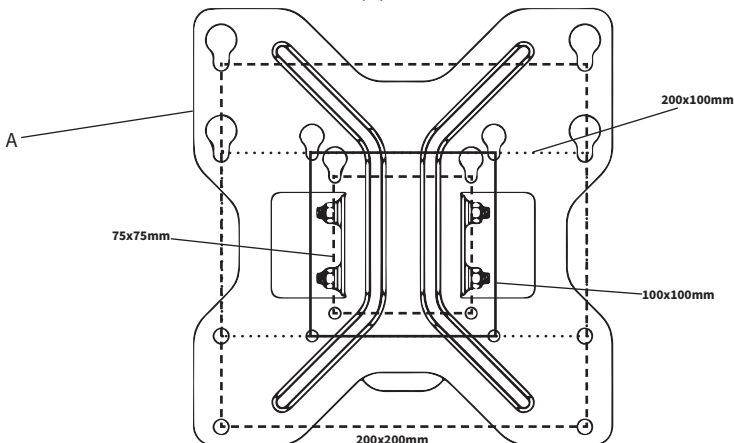
OPTION B: Grommet Base Installation

Remove screw and plate from clamp (D) as shown in diagram. Apply rubber pads (H) to the bottom of grommet base (G) as shown in diagram. Slide cable management clip (E) and decorative cover (F) onto pole (B). Thread pole (B) into grommet plate (G) until snug, then back off until the mounting holes are facing forward. Tighten grub screws with allen wrench (J) as shown in diagram. Slide decorative cover (F) down. Slide grommet plate (I) onto hand crank. Insert hand crank through grommet hole from bottom and into grommet base (G).



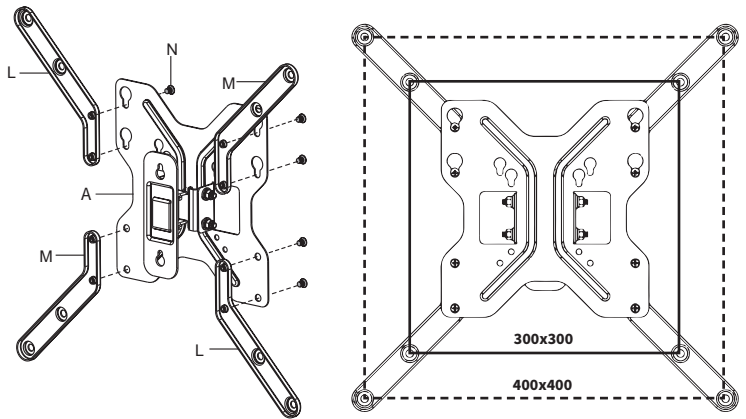
STEP 3

75x75mm up to and including 200x200mm Pattern: Arms (L, M) will not be used. Follow diagram below to see which holes to use VESA Plate (A).



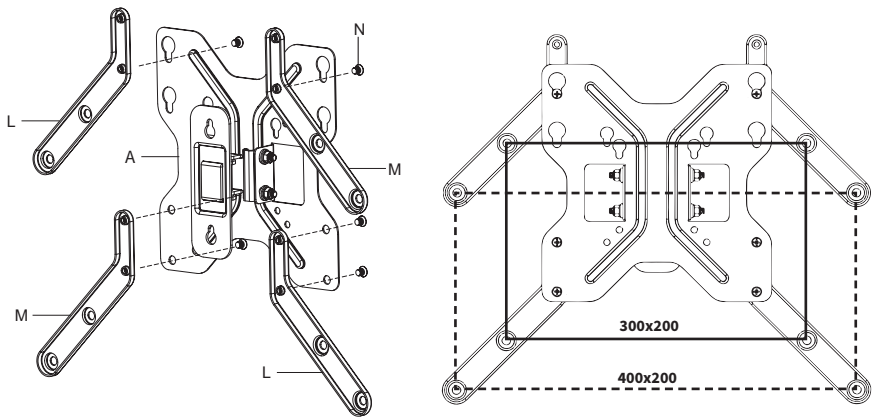
STEP 3 (Continued)

300x300mm or 400x400mm Pattern: Attach arm (L, M) to VESA Plate (A) with screws (N) as shown in the diagram.



STEP 3 (Continued)

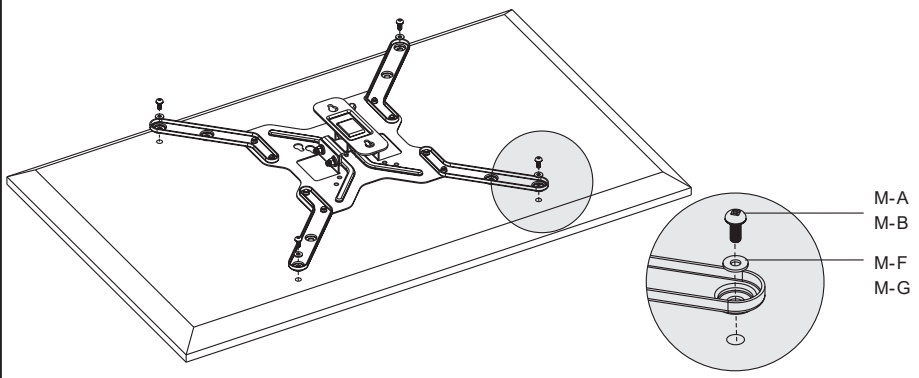
300x200mm or 400x200mm Pattern: Attach arm (L, M) to VESA Plate (A) with screws (N) as shown in the diagram.



STEP 4

OPTION A: Flat Back Monitor

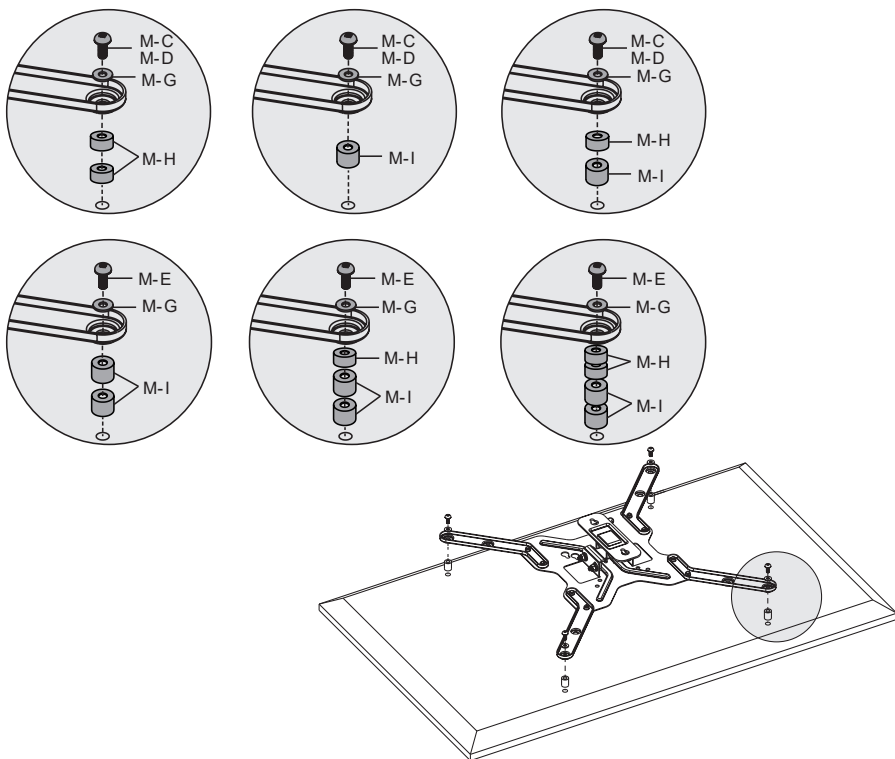
Attach VESA plate (A) to back of TV with screws (M-A, M-B) and washers (M-F, M-G). Make sure the two keyholes on back have the small end facing up.



STEP 4 (Continued)

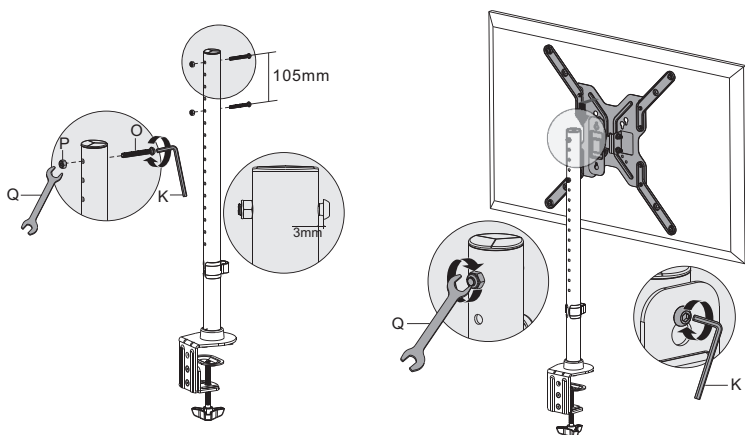
OPTION B: Curved Back Monitor

Attach VESA plate (A) to back of TV using screws (M-C, M-D, M-E), washers (M-G), and spacers (M-H, M-I) depending on your TV's requirements as shown in diagrams. Make sure the two keyholes on back have the small end facing up.



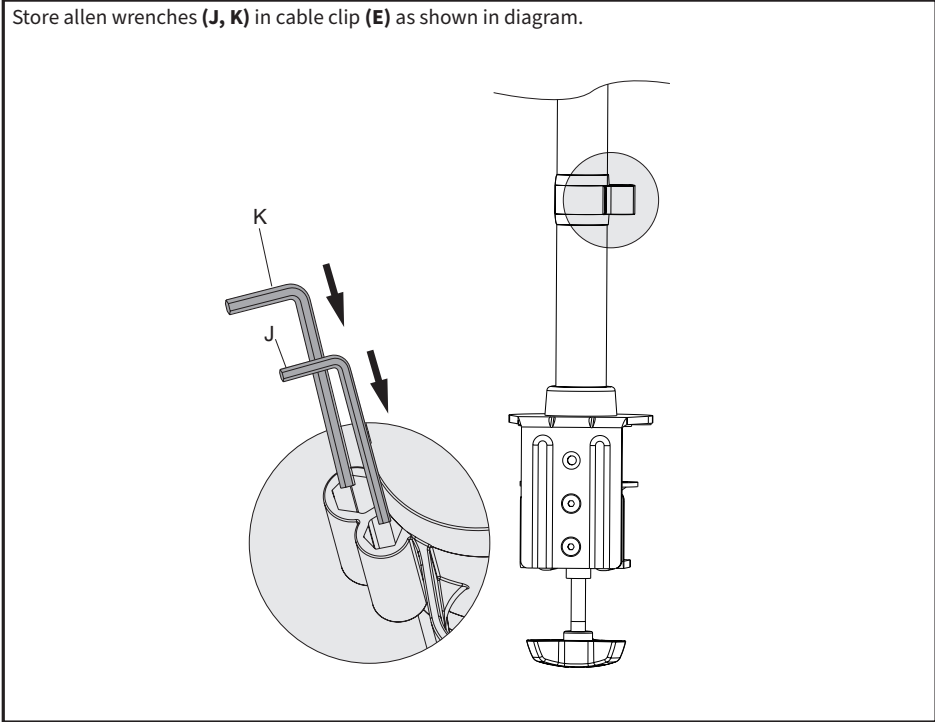
STEP 5

Insert bolts (O) into pole (B) at desired height, making sure there are 3 holes unused between bolts. Thread nuts (P) onto bolts leaving 3mm of thread exposed behind bolt heads. Hang VESA plate (A) with TV onto bolts, and tighten with 4mm Allen wrench (K) and wrench (Q).



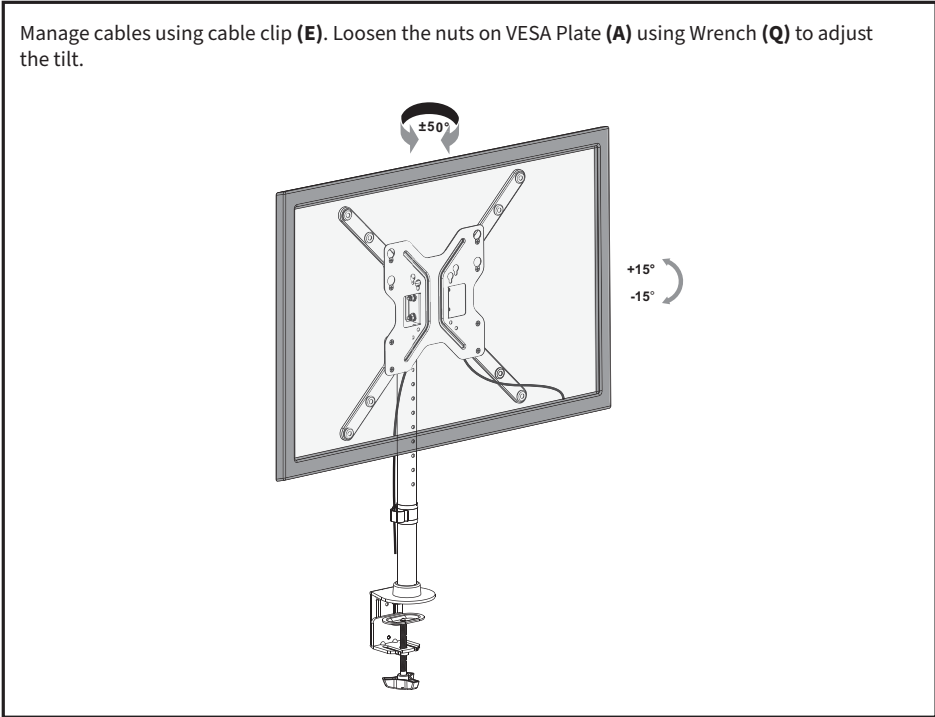
STEP 6

Store allen wrenches (J, K) in cable clip (E) as shown in diagram.



STEP 7

Manage cables using cable clip (E). Loosen the nuts on VESA Plate (A) using Wrench (Q) to adjust the tilt.





Open **Monday - Friday 7:00am - 7:00pm** CST,
our dedicated support team can offer immediate assistance with rapid response times. If any parts are received damaged or defective, please contact us. We are happy to replace parts to ensure you have a fully functioning product.



309-278-5303

AVG. RESOLUTION TIME (*within office hrs*): **5M 4S**



www.vivo-us.com
Chat live with an agent!

AVG. RESOLUTION TIME (*within office hrs*): **< 15 M**



help@vivo-us.com

AVG. RESPONSE TIME (*within office hrs*): **1HR 8M**

- 23% within < 15m
- 38% within < 30m
- 61% within < 1hr
- 83% within < 2hr
- 92% within < 3hr