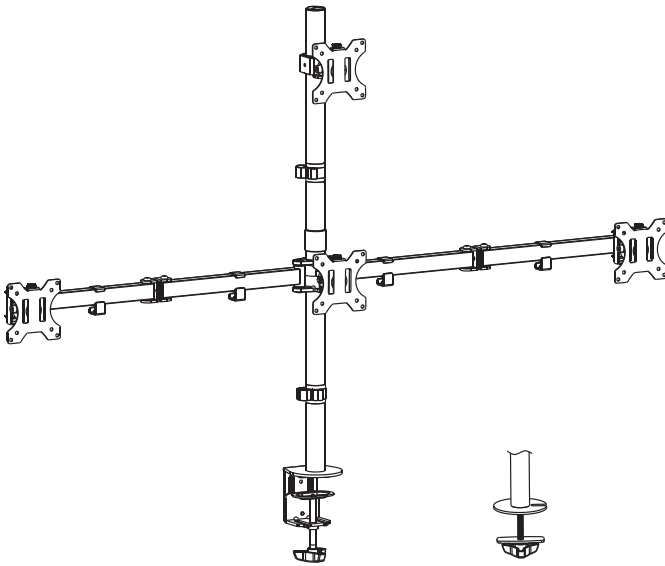




Quad Monitor Desk Mount

Instruction Manual



SKU: STAND-V104C



Scan the QR code with your mobile device or follow the link for helpful videos and specifications related to this product.

<https://vivo-us.com/products/stand-v104c>

GET IN TOUCH | Monday-Friday from 7:00am-7:00pm CST



help@vivo-us.com



www.vivo-us.com
Chat live with an agent!



309-278-5303

WARNING!

If you do not understand these directions, or if you have any doubts about the safety of the installation, please call a qualified technician. Check carefully to make sure there are no missing or defective parts. Improper installation may cause damage or serious injury. Do not use this product for any purpose that is not explicitly specified in this manual. Do not exceed weight capacity. We cannot be liable for damage or injury caused by improper mounting, incorrect assembly or inappropriate use.

TIPOVER WARNING

SERIOUS OR FATAL CRUSHING INJURIES CAN OCCUR FROM TIPOVER. TO HELP PREVENT TIPOVER:

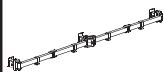
- NEVER ALLOW CHILDREN TO CLIMB, STAND, HANG, OR PLAY ON ANY PART OF MONITOR OR STAND.
- USE TIPOVER RESTRAINT OR ANCHOR STAND TO WALL

USE OF TIPOVER RESTRAINTS MAY ONLY REDUCE, BUT NOT ELIMINATE RISK OF TIPOVER.

WARNING: CHOKING HAZARD

SMALL PARTS - NOT FOR CHILDREN UNDER 3 YEARS. ADULT SUPERVISION IS REQUIRED.

PACKAGE CONTENTS



A (x1)
Arm



B (x4)
VESA Plate



C (x1)
Bracket



D (x1)
Clamp



E (x1)
Pole



F (x1)
Pole



G (x1)
Pole Cap



H (x1)
Pole
Connector



I (x2)
Cable Clip



J (x1)
Grommet
Base



K (x5)
Pad



L (x3)
M6x12



M (x1)
Support Plate



N (x4)
Thumbscrew



O (x1)
3mm Allen
Wrench



P (x1)
4mm Allen
Wrench



Q (x1)
5mm Allen
Wrench



R (x1)
6mm Allen
Wrench



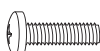
M-A (x16)
M4x12



M-B (x16)
M4x16



M-C (x16)
M5x16



M-D (x16)
M5x16



M-E (x16)
D5 Washer



M-F (x16)
Spacer

TOOLS NEEDED



DO NOT EXCEED WEIGHT CAPACITY.

Failure to do so may result in serious injury.

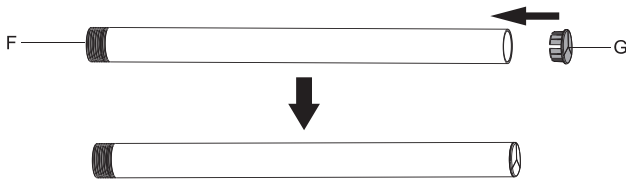
15.4lbs
(7kg)

PER ARM

ASSEMBLY STEPS

STEP 1

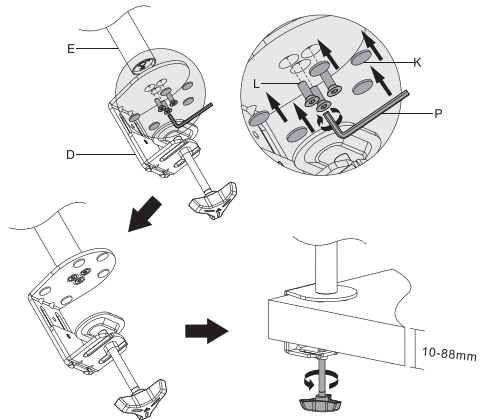
Attach the pole cap (G) to the top of the upper pole (F).



STEP 2

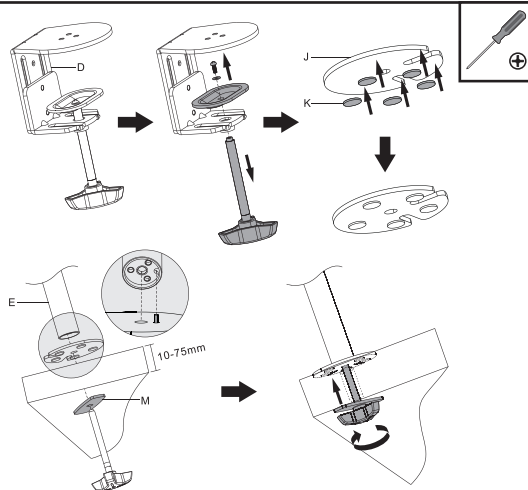
OPTION A: Clamp Installation

Mount the lower pole (E) to the clamp (D) using M6x12 bolts (L) with the 4mm Allen wrench (P). Apply pads (K) evenly to the bottom of the base, and clamp to the desktop.



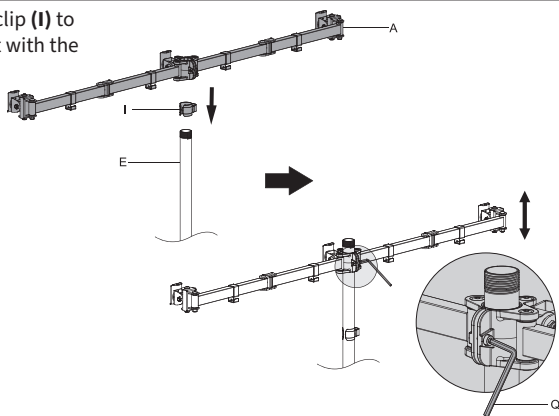
OPTION B: Grommet Base Installation

Remove screw from clamp bolt, then remove the clamp bolt from the clamp (C). Apply pads (K) evenly to the bottom of the grommet base (J). Align pin on top of the grommet base with the small hole on the bottom of lower pole (E), position over a hole in the desktop (drill hole using a 10mm or 3/8" bit if needed), and secure to the desktop using the clamp bolt and support plate (M).



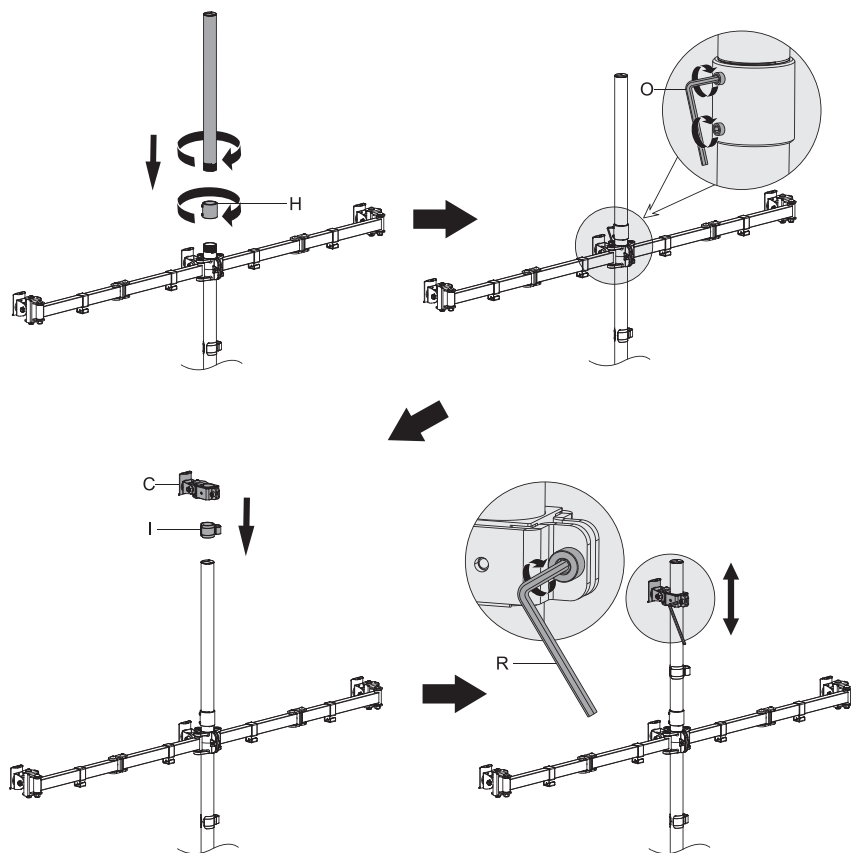
STEP 3

Install the arm (A) and one cable clip (I) to the lower pole (E). Fasten the bolt with the 5mm Allen wrench (Q).



STEP 4

Screw the pole connector (H) down onto the lower pole (E), then screw the upper pole (F) into the pole connector (Note: pole connector set screws may need to be loosened first). Tighten the set screws in the pole connector using the 3mm Allen wrench (O). Install the bracket (C) and second cable clip (I) to the upper pole (F). Fasten the bolt with the 6mm Allen wrench (R).

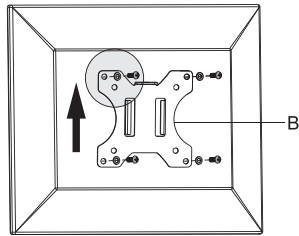
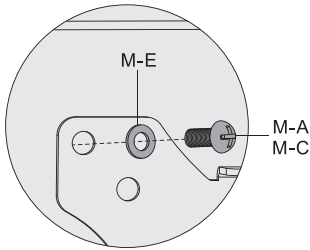


STEP 5

OPTION A: Flat Back Monitor



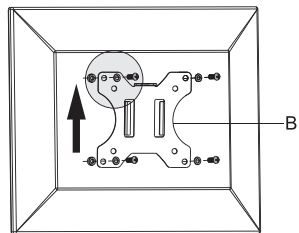
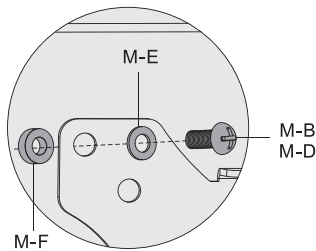
Install the VESA plates (**B**) to the monitors using bolts (**M-A or M-C**) and washers (**M-E**).



OPTION B: Curved/Recessed Back Monitor

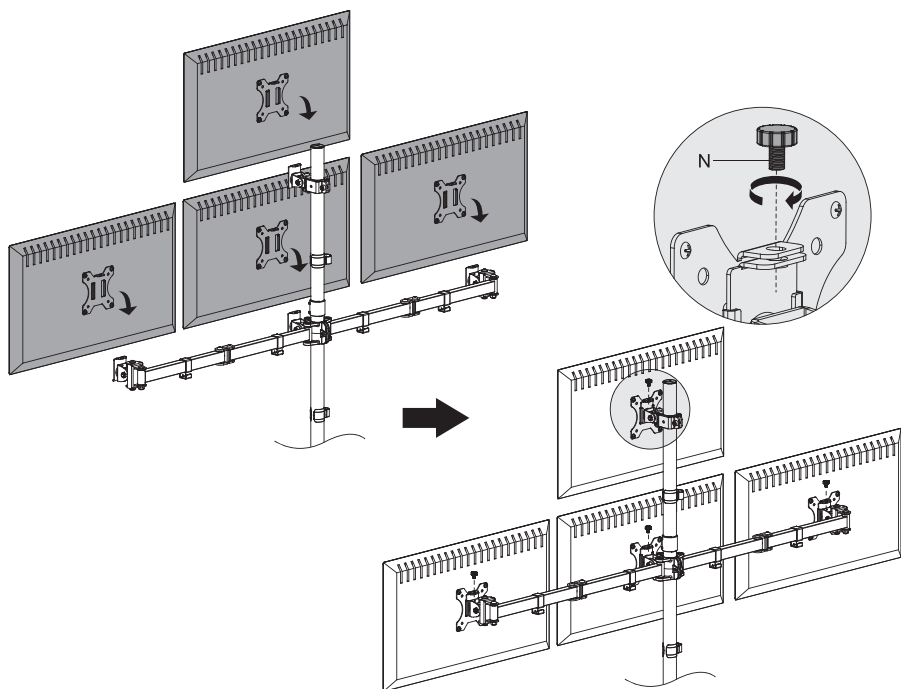


Install the VESA plates (**B**) to monitors using bolts (**M-B or M-D**), washers (**M-E**) and spacers (**M-F**).



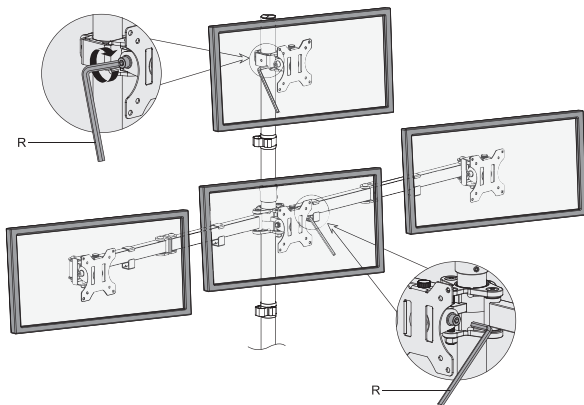
STEP 6

Slide the VESA plates (**B**) with monitors onto the heads of the arms (**B**) and bracket (**C**).
Install the thumb screws (**N**) to secure the monitors.



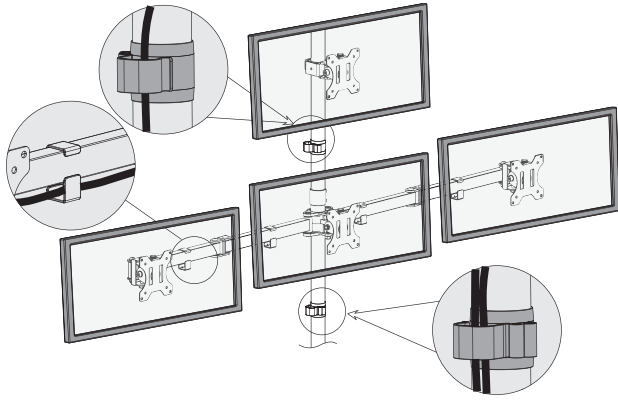
STEP 7

Tighten or loosen the tilt joints using the 6mm Allen wrench (**R**).



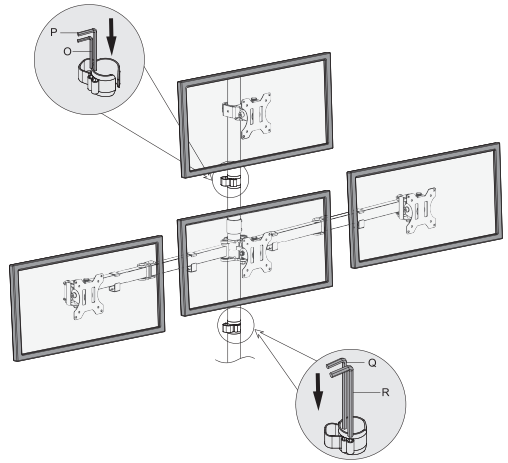
STEP 8

Manage cables using the installed cable clips (I).



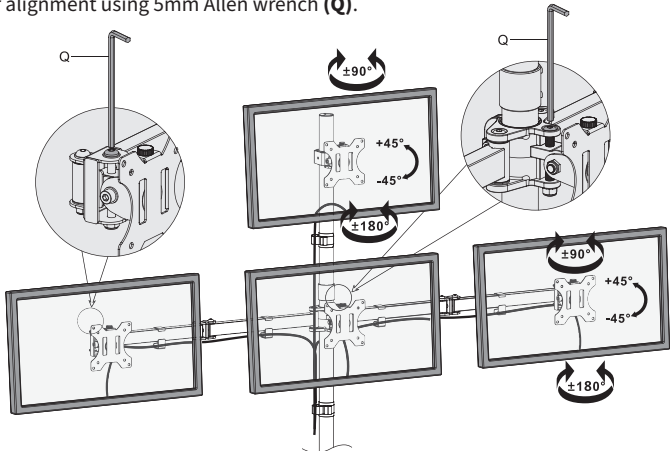
STEP 9

Store the Allen wrenches in the cable clips (I) for future use.



STEP 10

Adjust monitor alignment using 5mm Allen wrench (Q).





Open **Monday - Friday 7:00am - 7:00pm** CST,
our dedicated support team can offer immediate assistance with rapid response times. If any parts are received damaged or defective, please contact us. We are happy to replace parts to ensure you have a fully functioning product.



309-278-5303

AVG. RESOLUTION TIME (*within office hrs*): **5M 4S**



www.vivo-us.com
Chat live with an agent!

AVG. RESOLUTION TIME (*within office hrs*): **< 15 M**



help@vivo-us.com

AVG. RESPONSE TIME (*within office hrs*): **1HR 8M**

- 23% within < 15m
- 38% within < 30m
- 61% within < 1hr
- 83% within < 2hr
- 92% within < 3hr