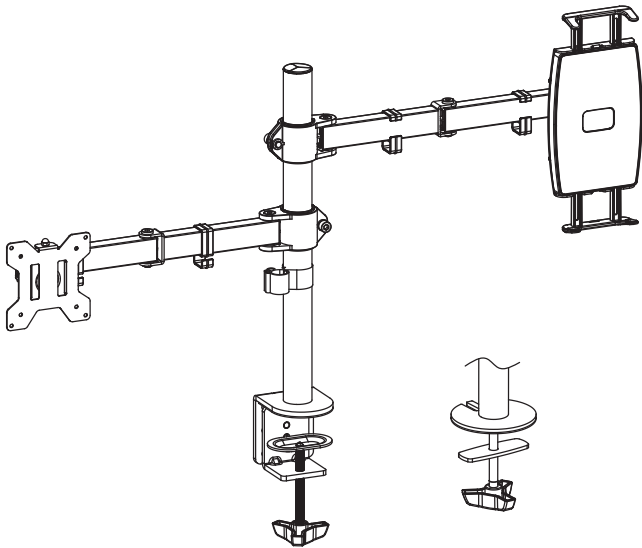




Single Monitor and Tablet Desk Mount

Instruction Manual



SKU: STAND-V102M



Scan the QR code with your mobile device or follow the link for helpful videos and specifications related to this product.

<https://vivo-us.com/products/stand-v102m>

GET IN TOUCH | Monday-Friday from 7:00am-7:00pm CST



help@vivo-us.com



www.vivo-us.com
Chat live with an agent!



309-278-5303

WARNING!

If you do not understand these directions, or if you have any doubts about the safety of the installation, please call a qualified technician. Check carefully to make sure there are no missing or defective parts. Improper installation may cause damage or serious injury. Do not use this product for any purpose that is not explicitly specified in this manual. Do not exceed weight capacity. We cannot be liable for damage or injury caused by improper mounting, incorrect assembly or inappropriate use.

TIPOVER WARNING

SERIOUS OR FATAL CRUSHING INJURIES CAN OCCUR FROM TIPOVER. TO HELP PREVENT TIPOVER:

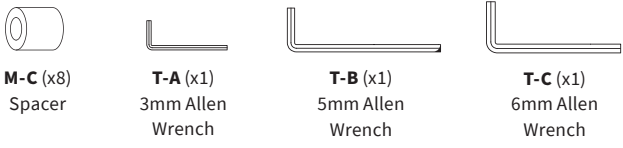
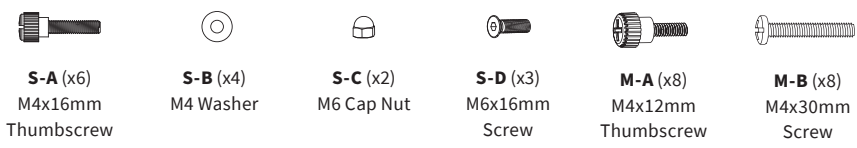
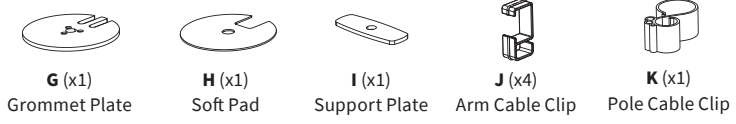
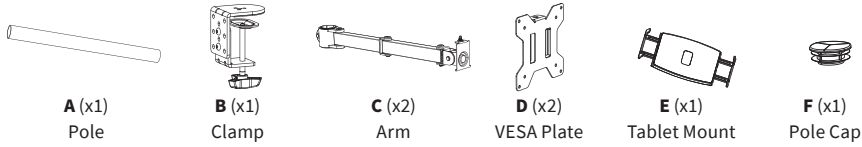
- NEVER ALLOW CHILDREN TO CLIMB, STAND, HANG, OR PLAY ON ANY PART OF MONITOR OR STAND.
- USE TIPOVER RESTRAINT OR ANCHOR STAND TO WALL

USE OF TIPOVER RESTRAINTS MAY ONLY REDUCE, BUT NOT ELIMINATE RISK OF TIPOVER.

WARNING: CHOKING HAZARD

SMALL PARTS - NOT FOR CHILDREN UNDER 3 YEARS. ADULT SUPERVISION IS REQUIRED.

PACKAGE CONTENTS



TOOLS NEEDED

NOTE: SOME HARDWARE INCLUDED MAY NOT BE USED



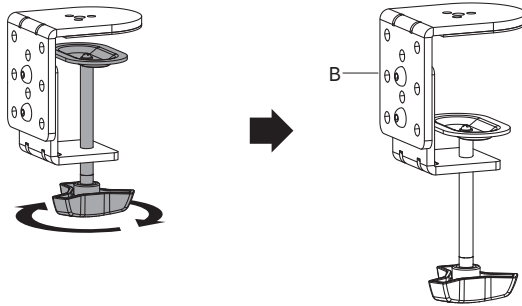
DO NOT EXCEED WEIGHT CAPACITY.
Failure to do so may result in serious injury.



ASSEMBLY STEPS

STEP 1

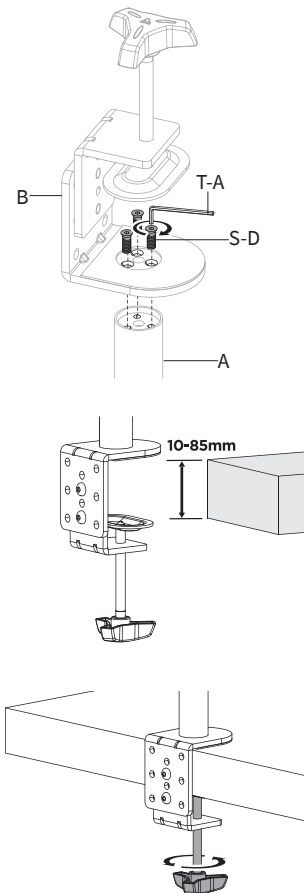
Loosen the knob on Clamp **(B)**.



STEP 2

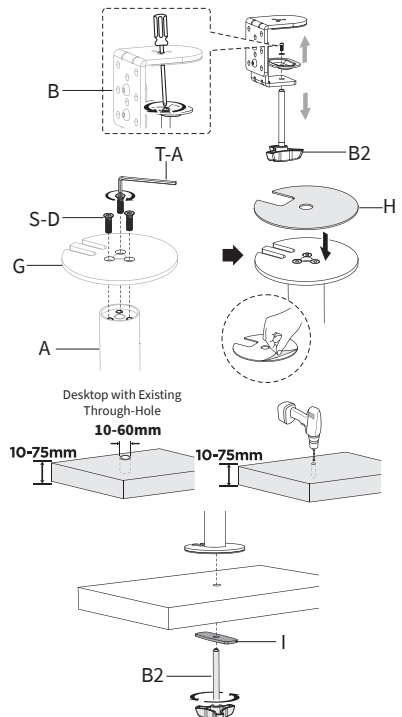
OPTION A: Clamp Installation

Assemble Clamp **(B)** to Pole **(A)** using M6x16mm Screws **(S-D)** and 3mm Allen Wrench **(T-A)**. Tighten Clamp **(B)** to the desktop.



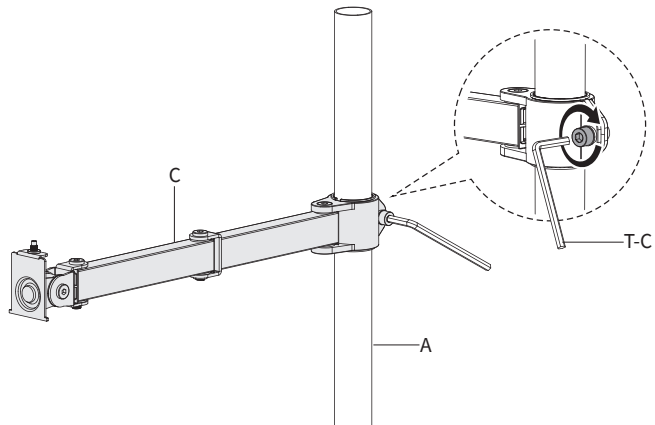
OPTION B: Grommet Base Installation

Remove the screw from Clamp **(B)** using a Phillips screwdriver, and set aside Clamp Bolt **(B2)**. Assemble Grommet Plate **(G)** to Pole **(A)** using M6x16mm Screws **(S-D)** and 3mm Allen Wrench **(T-A)**. Peel the protective film off of Soft Pad **(H)** and place onto Grommet Plate **(G)**. If not using an existing through-hole, using a 10mm ($\frac{3}{8}$ ") drill bit, drill through the desktop at least 2" away from the edge. Mount the pole assembly to the desktop using Clamp Bolt **(B2)** and Support Plate **(I)**.



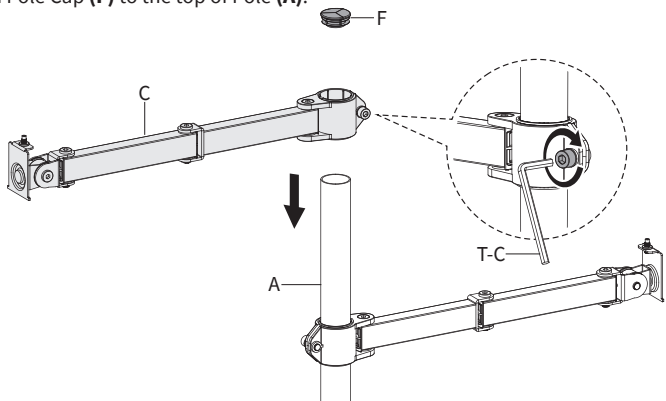
STEP 3

Slide the first Arm (C) onto Pole (A) and tighten the screw on the back using 6mm Allen Wrench (T-C).



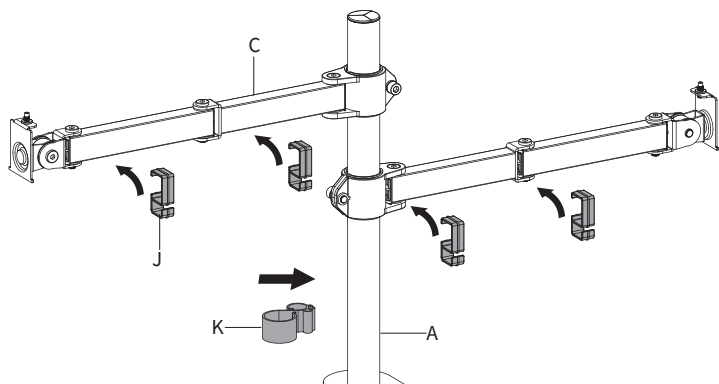
STEP 4

Slide the second Arm (C) onto Pole (A) and tighten the screw on the back using 6mm Allen Wrench (T-C). Attach Pole Cap (F) to the top of Pole (A).



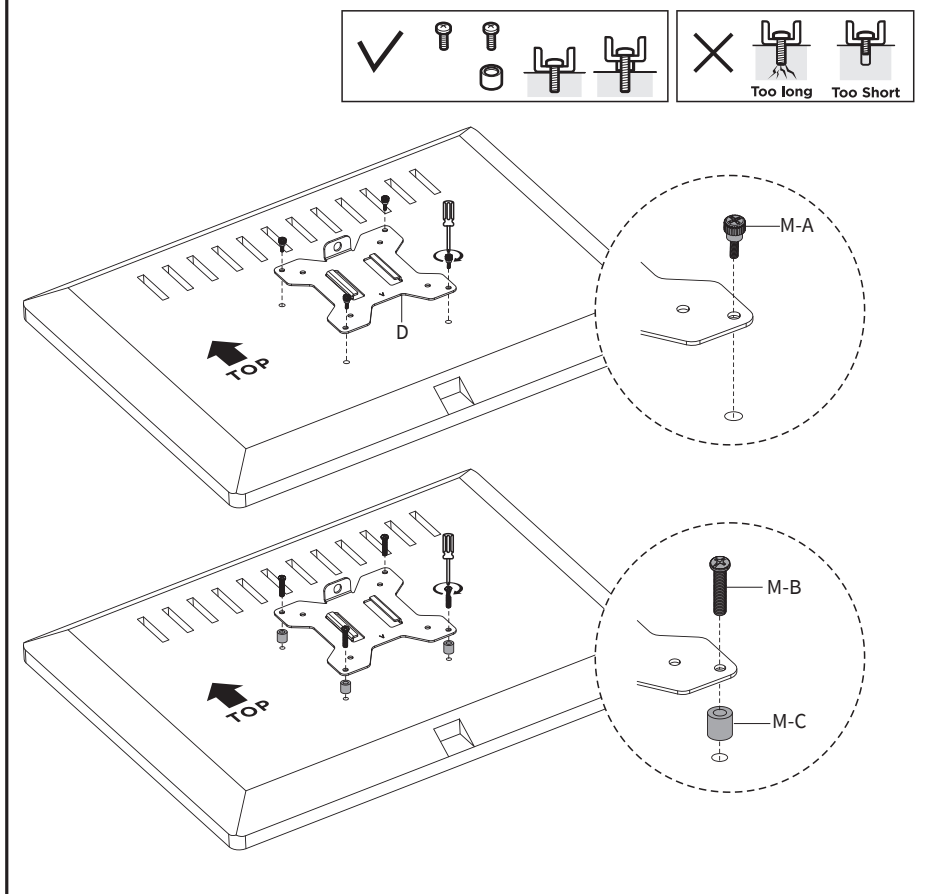
STEP 5

Assemble Arm Cable Clips (J) to Arms (C). Attach Pole Cable Clip (K) to Pole (A).



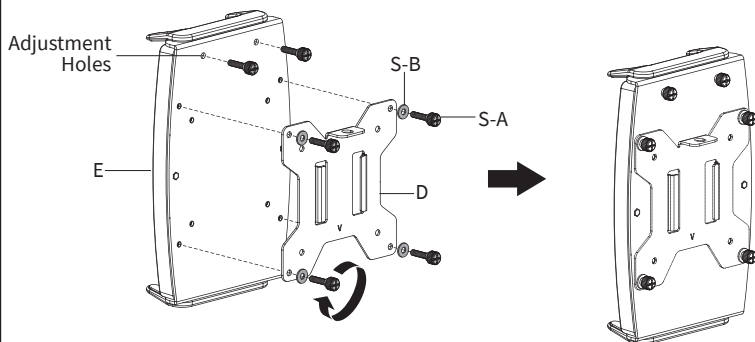
STEP 6

Attach VESA Plate (**D**) to the back of the monitor using M4x12mm Thumbscrews (**M-A**) or M4x30mm Screws (**M-B**) and Spacers (**M-C**).

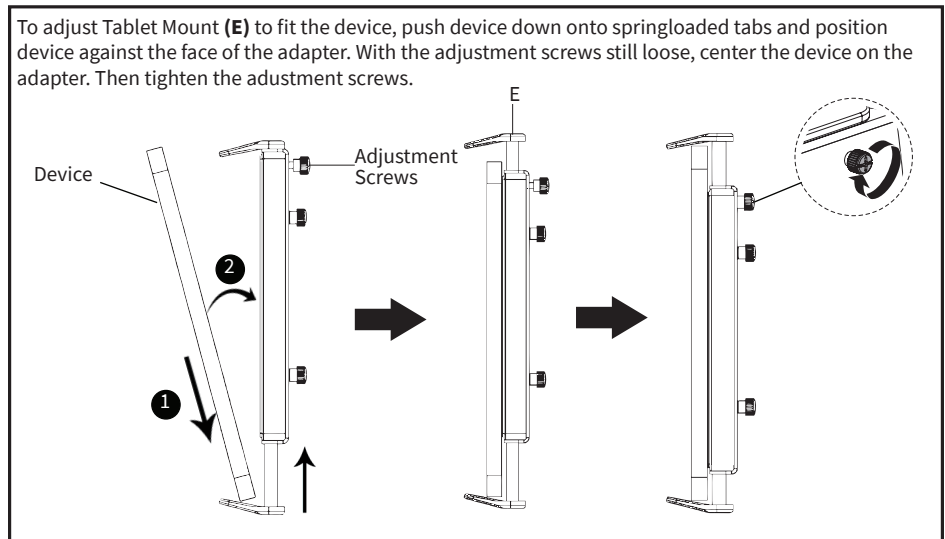


STEP 7

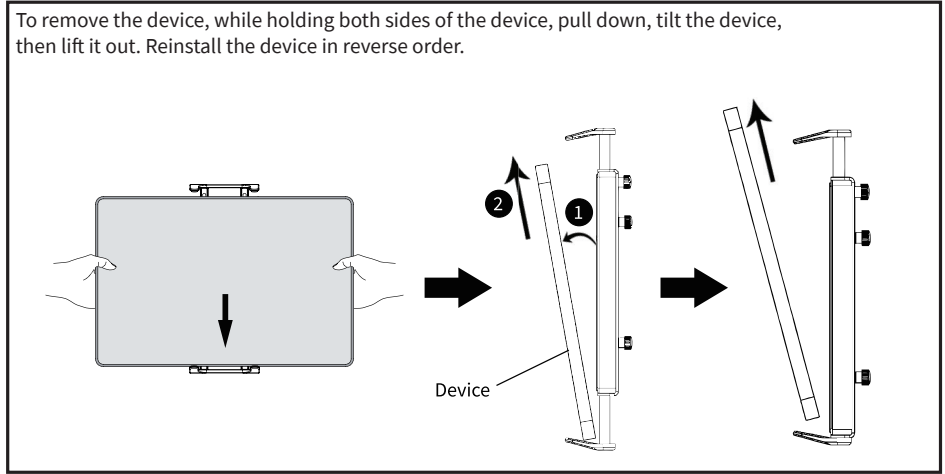
With the adjustment screw holes on top, assemble Tablet Mount (**E**) to VESA Plate (**D**) using M4x16mm Thumbscrews (**S-A**) and M4 Washers (**S-B**). Loosely install remaining M4x16mm Thumbscrews (**S-A**) into the top adjustment holes in Adapter (**E**).



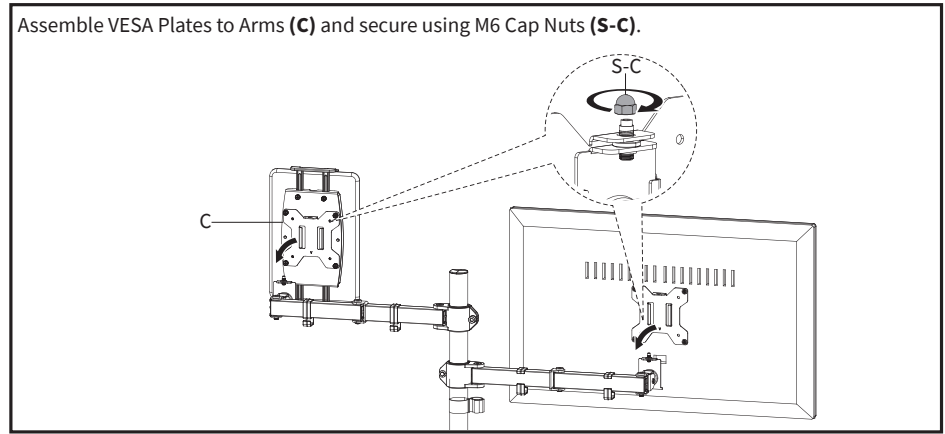
STEP 8



STEP 9

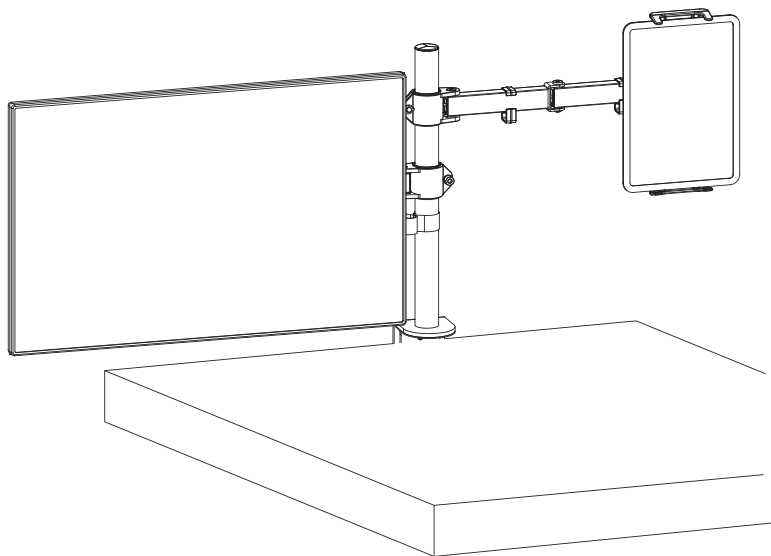


STEP 10

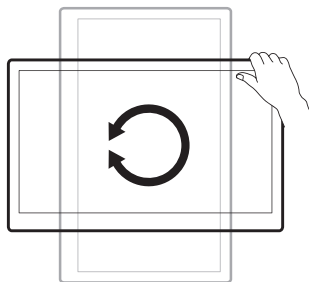
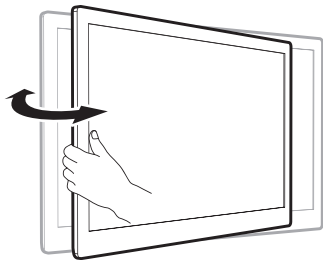
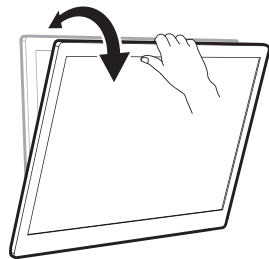
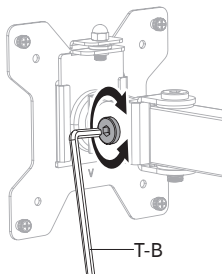


STEP 11

Adjust the tilt using 5mm Allen Wrench (**T-B**).




Note: If the display does not stop at your desired position, tighten the screw as shown.





Open **Monday - Friday 7:00am - 7:00pm** CST,
our dedicated support team can offer immediate assistance with rapid response times. If any parts are received damaged or defective, please contact us. We are happy to replace parts to ensure you have a fully functioning product.

 309-278-5303

AVG. RESOLUTION TIME (*within office hrs*): **5M 4S**

 www.vivo-us.com
Chat live with an agent!

AVG. RESOLUTION TIME (*within office hrs*): **< 15 M**

 help@vivo-us.com

AVG. RESPONSE TIME (*within office hrs*): **1HR 8M**

- 23% within < 15m
- 38% within < 30m
- 61% within < 1hr
- 83% within < 2hr
- 92% within < 3hr