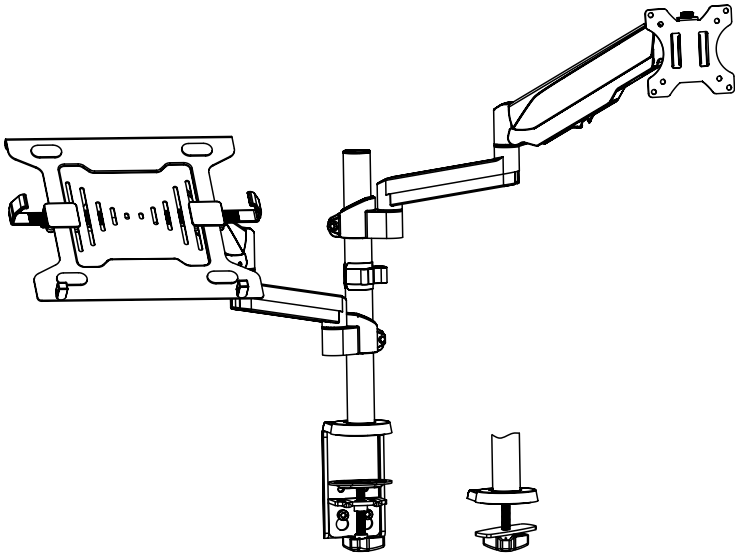




## Pneumatic Arm Single Monitor and Laptop Desk

Instruction Manual



**SKU: STAND-V102L**



Scan the QR code with your mobile device or follow the link for helpful videos and specifications related to this product.

<https://vivo-us.com/products/stand-v102l>

**GET IN TOUCH** | Monday-Friday from 7:00am-7:00pm CST



help@vivo-us.com



www.vivo-us.com  
*Chat live with an agent!*



309-278-5303

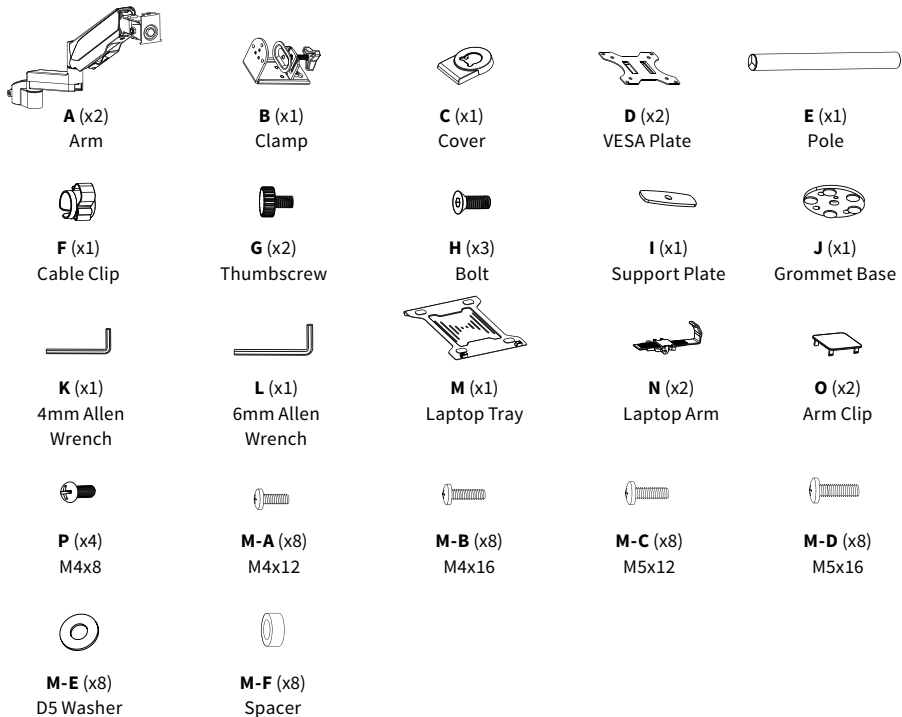
## ⚠️ WARNING!

If you do not understand these directions, or if you have any doubts about the safety of the installation, please call a qualified technician. Check carefully to make sure there are no missing or defective parts. Improper installation may cause damage or serious injury. Do not use this product for any purpose that is not explicitly specified in this manual. Do not exceed weight capacity. We cannot be liable for damage or injury caused by improper mounting, incorrect assembly or inappropriate use.

## ⚠️ WARNING: CHOKING HAZARD

SMALL PARTS - NOT FOR CHILDREN UNDER 3 YEARS. ADULT SUPERVISION IS REQUIRED.

## PACKAGE CONTENTS



**NOTE: SOME HARDWARE MAY NOT BE USED**

## TOOLS NEEDED



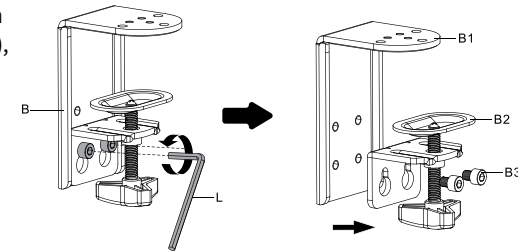
**DO NOT EXCEED WEIGHT CAPACITY.**  
Failure to do so may result in serious injury.



## ASSEMBLY STEPS

### STEP 1

Separate the clamp (**B**) using the 6mm Allen wrench (**L**) into clamp brace (**B1**), clamp (**B2**) and clamp bolts (**B3**).

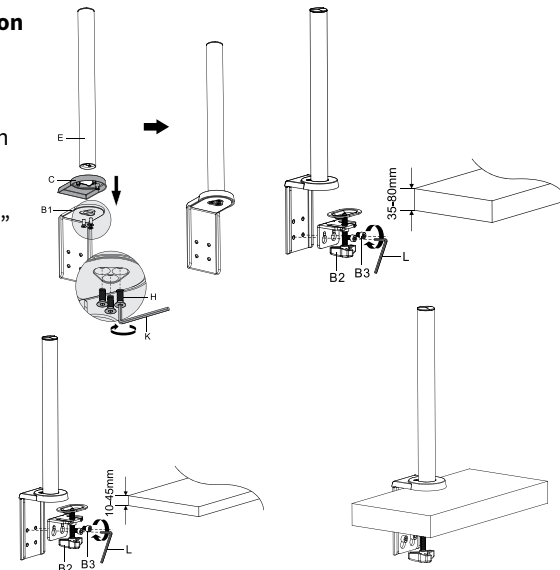


### STEP 2

#### OPTION A: Desk Clamp Installation

Press the cover (**C**) onto the clamp brace (**B1**). Secure the pole (**E**) to the clamp brace using three bolts (**H**) and tighten with the 4mm Allen wrench (**K**).

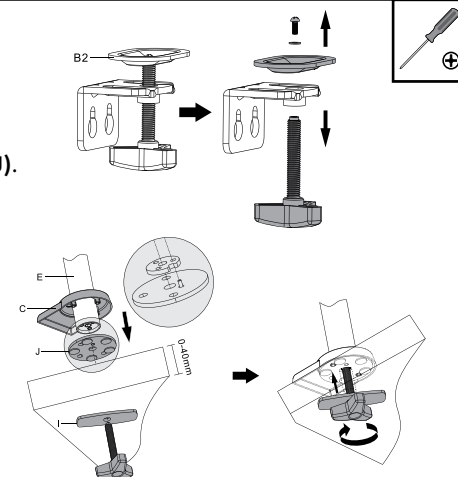
For a desk thickness of 3/8" - 1-3/4" (10mm - 45mm), assemble the clamp (**B2**) to the upper holes of the clamp brace using clamp bolts (**B3**), or for a thickness of 1-3/8" - 3-1/8" (35mm - 80mm), assemble to the lower holes of the clamp brace. Tighten bolts using the 6mm Allen wrench (**L**).



#### OPTION B: Grommet Base Installation

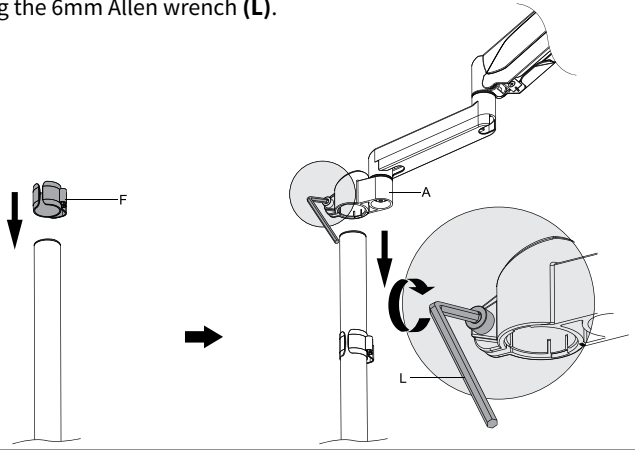
Remove the screw, washer and clamp plate from the clamp (**B2**), then remove the hand bolt from the clamp.

Press the cover (**C**) onto the grommet base (**J**). If necessary, drill a hole through the desktop using a 3/8" (10mm) drill bit. Place the pole (**E**) on the grommet base, making sure the small pin inserts into the edge hole on the bottom of the pole as shown. Position the grommet base with pole over the grommet hole, and secure using the hand bolt with support plate (**I**) from underneath.



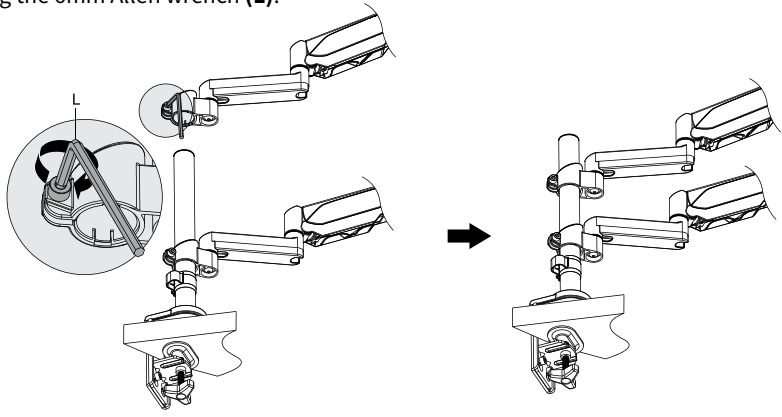
STEP 3

Slide the cable clip (F) and arm (A) down over the top of the pole (E). Tighten the bolt on the arm using the 6mm Allen wrench (L).



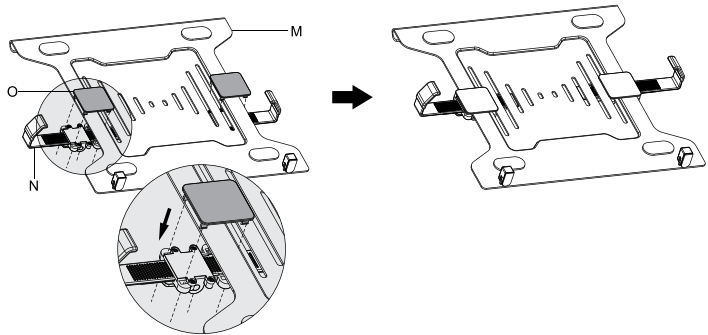
STEP 4

Slide the second arm (A) down over the top of the pole (E). Tighten the bolt on the arm using the 6mm Allen wrench (L).



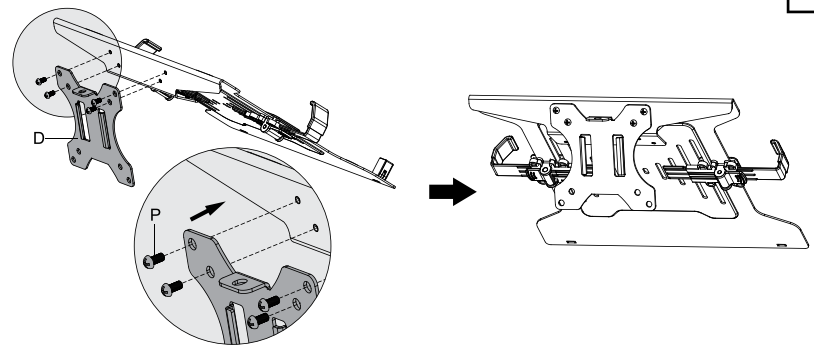
STEP 5

Place the laptop arms (N) underneath each side of the laptop tray (M), aligning square holes in the arms with the edge and long slot on each side. Insert the arm clips (O) through the top to secure the arms, making sure all 4 locks on each clip are engaged with the square holes in the arms.



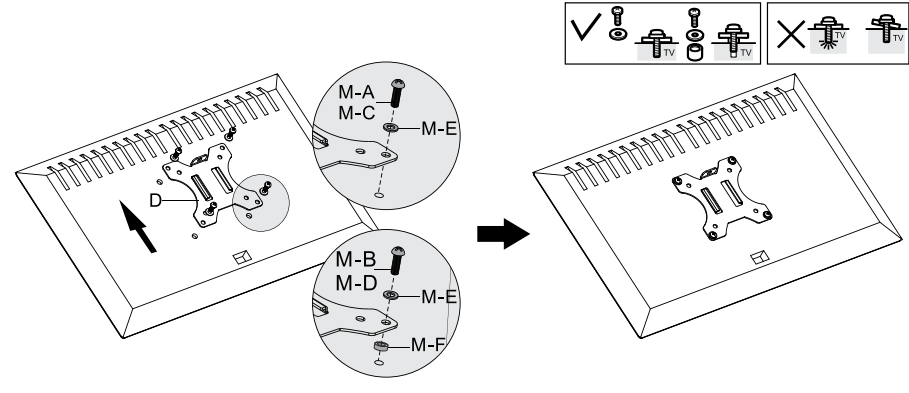
STEP 6

Attach the assembled laptop holder to the 75mm and 100mm holes on the VESA plate (D) using the M4x8 bolts (P).



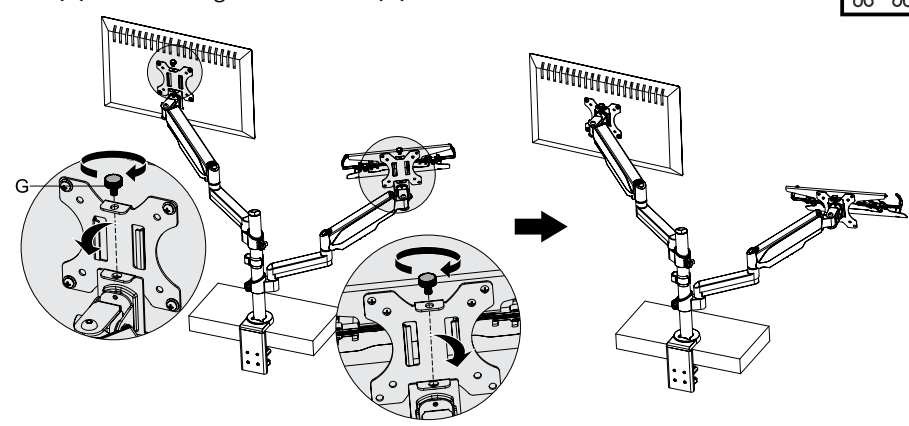
STEP 7

Attach the second VESA plate (D) to the back of the monitor using bolts (M-A, M-B, M-C, M-D) and washers (M-E). For monitors with a curved or recessed back, spacer (M-F) may be required.



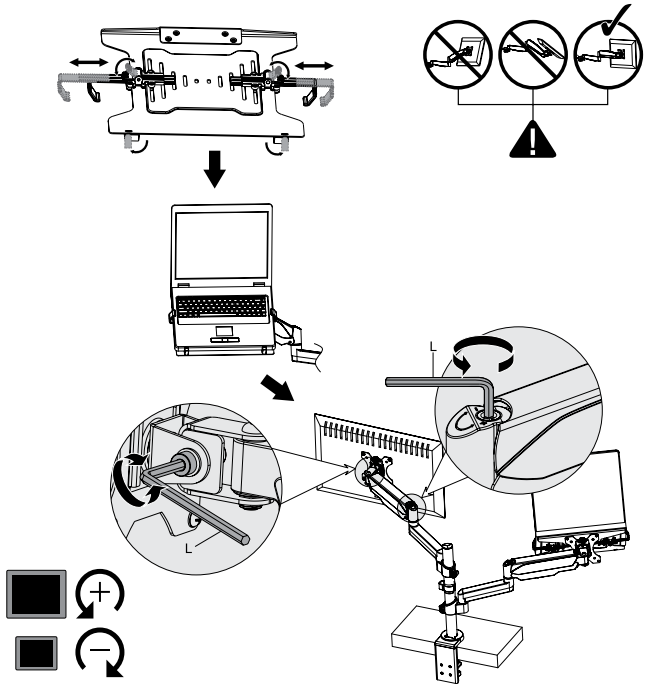
STEP 8

Slide the VESA plates (D) with monitor and laptop tray over the brackets on the arms (A). Secure using thumb screws (G).



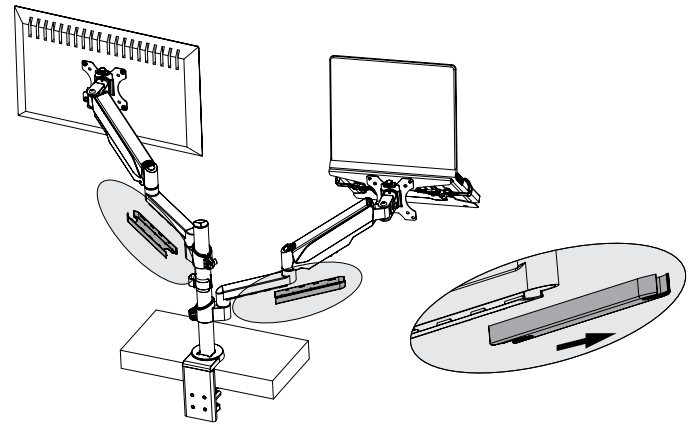
STEP 9

Release the locks on the underside of the laptop arms. Extend the arms, place laptop in the holder, then adjust the arms to the width of the laptop. Engage locks to secure the laptop. If using a thicker laptop, turn the front bumpers to the upward position for additional support. Adjust the tilt support on each arm by turning the bolt on the side of the tilt joint using the 6mm Allen wrench (L). Adjust the gas spring support in each arm by turning the screw on top of the center arm joint using the 6mm Allen wrench (L). Turning clockwise will decrease gas spring support, and counter-clockwise will increase gas spring support.



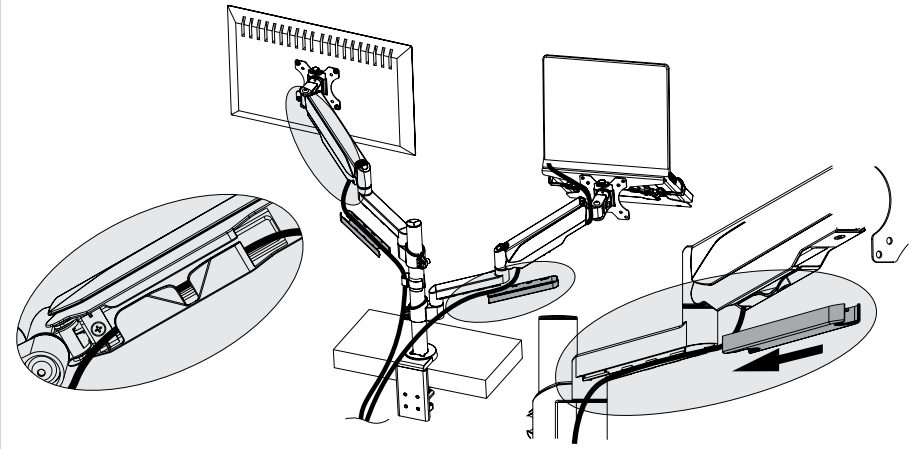
STEP 10

Remove lower covers from the arm (A) by sliding forward and off.



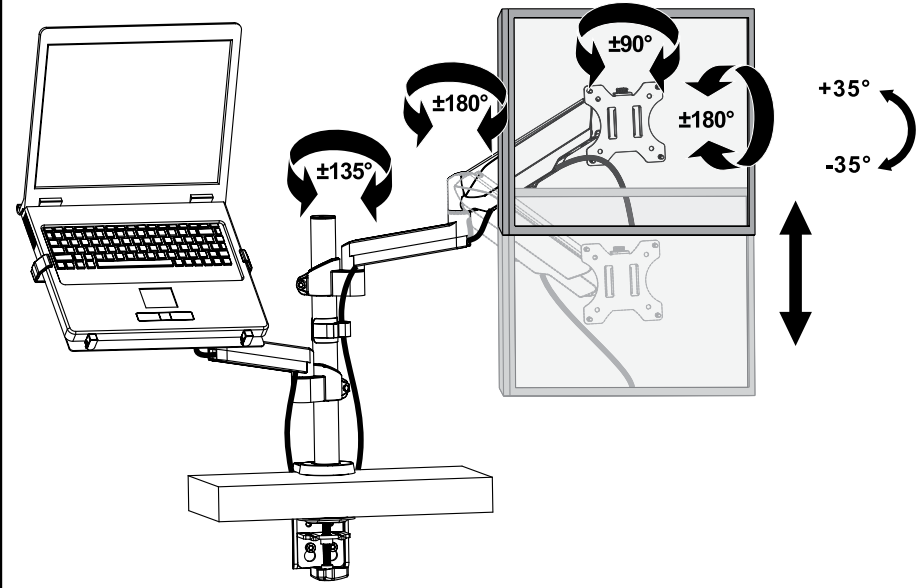
STEP 11

Organize cables using the clips in the upper arms. Run cables through the lower arms and reattach the lower covers.



STEP 12

Adjust the monitor and laptop positions as desired.





Love your new VIVO setup and want to share?  
Tag us in your photo! [@vivo\\_us](#)

LAST UPDATED: 05/11/2020



Open **Monday - Friday 7:00am - 7:00pm** CST,

our dedicated support team can offer immediate assistance with rapid response times. If any parts are received damaged or defective, please contact us. We are happy to replace parts to ensure you have a fully functioning product.



[help@vivo-us.com](mailto:help@vivo-us.com)

**AVG. RESPONSE TIME** (*within office hrs*): **1HR 8M**

- 23% within < 15m
- 38% within < 30m
- 61% within < 1hr
- 83% within < 2hr
- 92% within < 3hr



[www.vivo-us.com](http://www.vivo-us.com)  
*Chat live with an agent!*

**AVG. RESOLUTION TIME** (*within office hrs*): **< 15 M**



309-278-5303

**AVG. RESOLUTION TIME** (*within office hrs*): **5M 4S**

FOR MORE VIVO PRODUCTS, CHECK OUT OUR WEBSITE AT: [www.vivo-us.com](http://www.vivo-us.com)