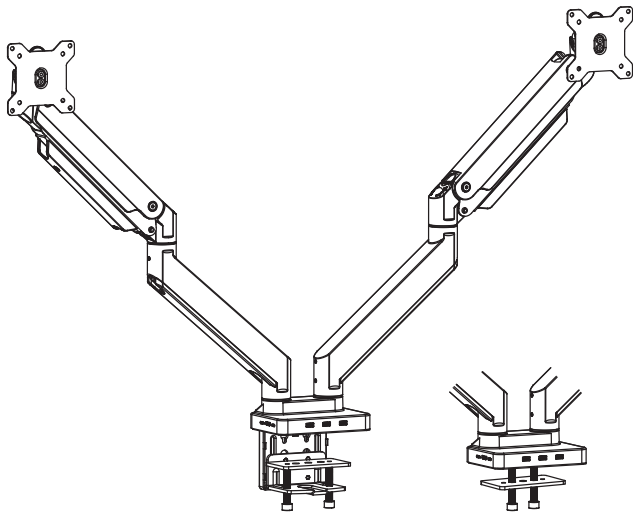




Pneumatic Arm Dual Monitor Desk Mount with Docking Station

Instruction Manual



SKU: STAND-V102G2D



Scan the QR code with your mobile device or follow the link for helpful videos and specifications related to this product.

<https://vivo-us.com/products/stand-v102G2D>

GET IN TOUCH | Monday-Friday from 7:00am-7:00pm CST



help@vivo-us.com



www.vivo-us.com
Chat live with an agent!



309-278-5303

WARNING!

If you do not understand these directions, or if you have any doubts about the safety of the installation, please call a qualified technician. Check carefully to make sure there are no missing or defective parts. Improper installation may cause damage or serious injury. Do not use this product for any purpose that is not explicitly specified in this manual. Do not exceed weight capacity. We cannot be liable for damage or injury caused by improper mounting, incorrect assembly or inappropriate use.

TIPOVER WARNING

SERIOUS OR FATAL CRUSHING INJURIES CAN OCCUR FROM TIPOVER. TO HELP PREVENT TIPOVER:

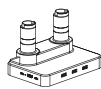
- NEVER ALLOW CHILDREN TO CLIMB, STAND, HANG, OR PLAY ON ANY PART OF MONITOR OR STAND.
- USE TIPOVER RESTRAINT OR ANCHOR STAND TO WALL

USE OF TIPOVER RESTRAINTS MAY ONLY REDUCE, BUT NOT ELIMINATE RISK OF TIPOVER.

WARNING: CHOKING HAZARD

SMALL PARTS - NOT FOR CHILDREN UNDER 3 YEARS. ADULT SUPERVISION IS REQUIRED.

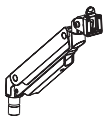
PACKAGE CONTENTS



A (x1)
Base



B (x2)
Lower Arm



C (x2)
Gas Spring Arm



D (x2)
VESA Plate



E (x1)
Clamp Plate



F (x1)
Grommet Plate



G (x1)
Soft Pad



H (x1)
Cover



I (x1)
Clamp Brace



J (x1)
Clamp



K (x1)
USB-C Cable



S-A (x4)
M6x12mm Screw



M-A (x8)
M4x12mm Screw



M-B (x8)
M5x12mm Screw



M-C (x8)
M5 Washer



T-A (x1)
3mm Allen Wrench



T-B (x1)
4mm Allen Wrench



T-C (x1)
6mm Allen Wrench

NOTE: SOME HARDWARE INCLUDED MAY NOT BE USED

TOOLS NEEDED



DO NOT EXCEED WEIGHT CAPACITY.

Failure to do so may result in serious injury.

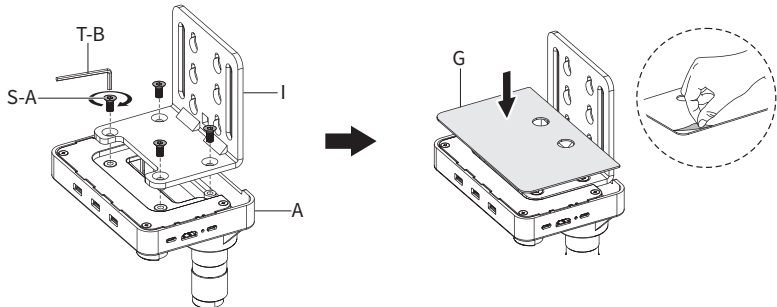
2.2-33lbs
(1-15kg)
PER ARM

ASSEMBLY STEPS

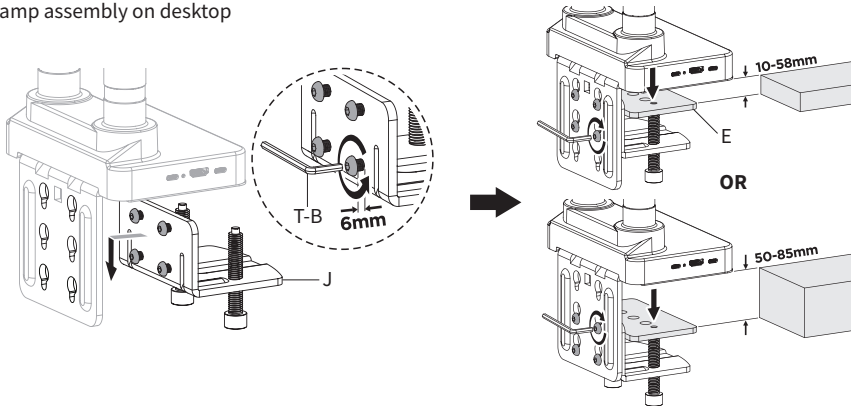
STEP 1 (Option A)

Clamp Installation

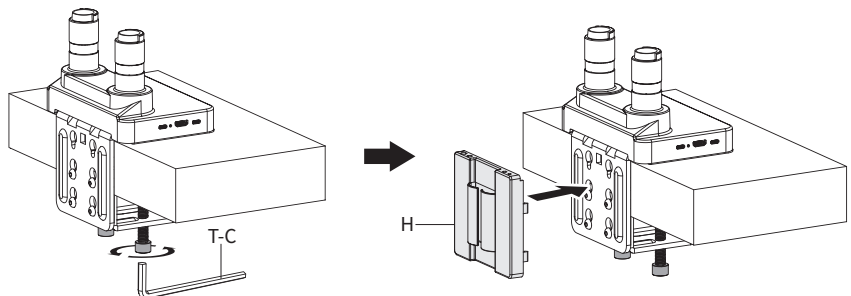
Attach Clamp Brace (I) to Base (A) using M6x12mm Screws (S-A) and tighten with 4mm Allen Wrench (T-B). Apply Soft Pad (G) to the underside of the assembly.



Loosen screws on the back of Clamp (J), leaving 6mm of thread exposed. For a desk thickness of 3/8" - 2-1/2" (10 - 58mm), hang Clamp (J) into top four slots of Clamp Brace (I), or for a desk thickness of 2" - 3-3/8" (50 - 85mm), into lower four slots. Place Clamp Plate (E) on top of clamp bolts. Position the clamp assembly on desktop



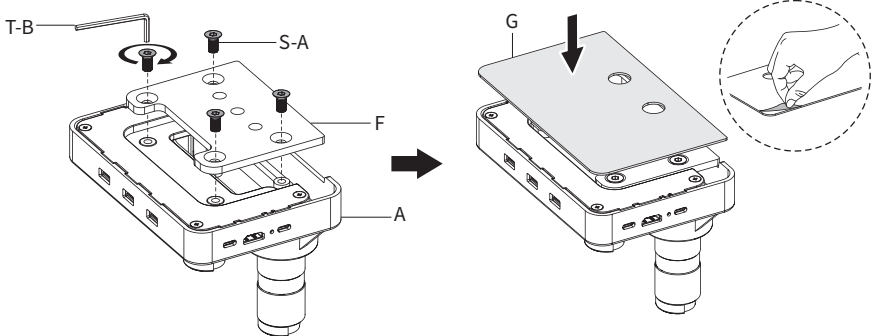
Tighten clamp bolts evenly using 6mm Allen Wrench (T-C). Attach Cover (H) to back of Clamp Brace (I).



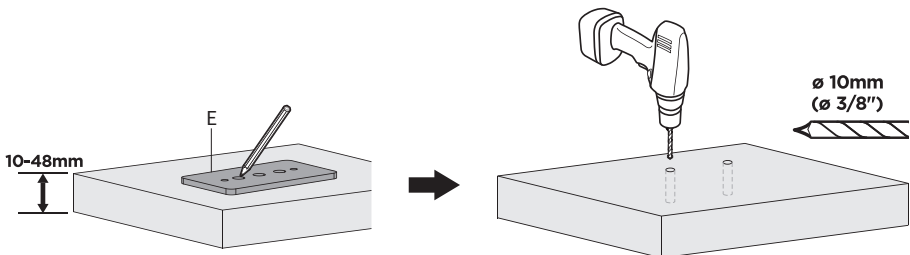
STEP 1 (Option B)

Grommet Base Installation

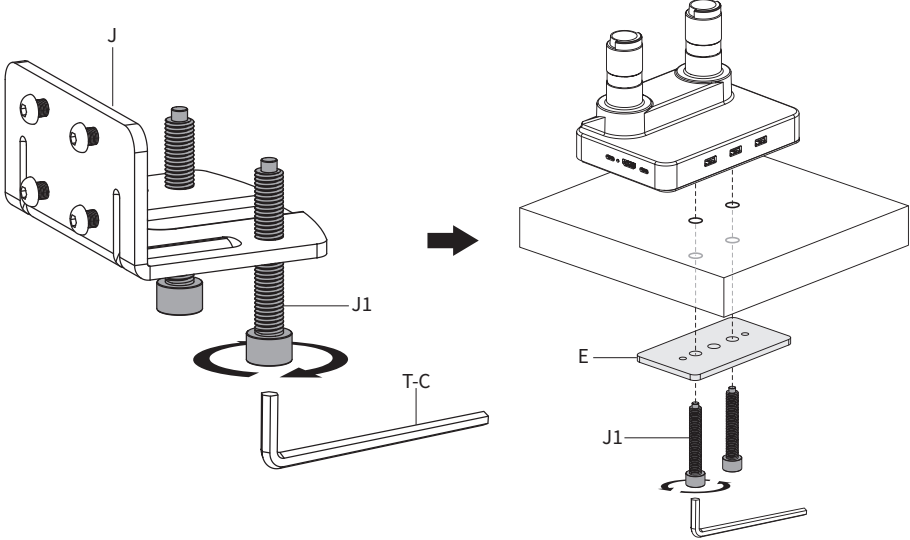
Attach Grommet Plate (F) to Base (A) using M6x12mm Screws (S-A) and tighten with 4mm Allen Wrench (T-B). Apply Soft Pad (G) to underside of the base assembly.



Use Clamp Plate (E) to mark drilling locations and drill 3/8" (10mm) holes through the desk for installation.

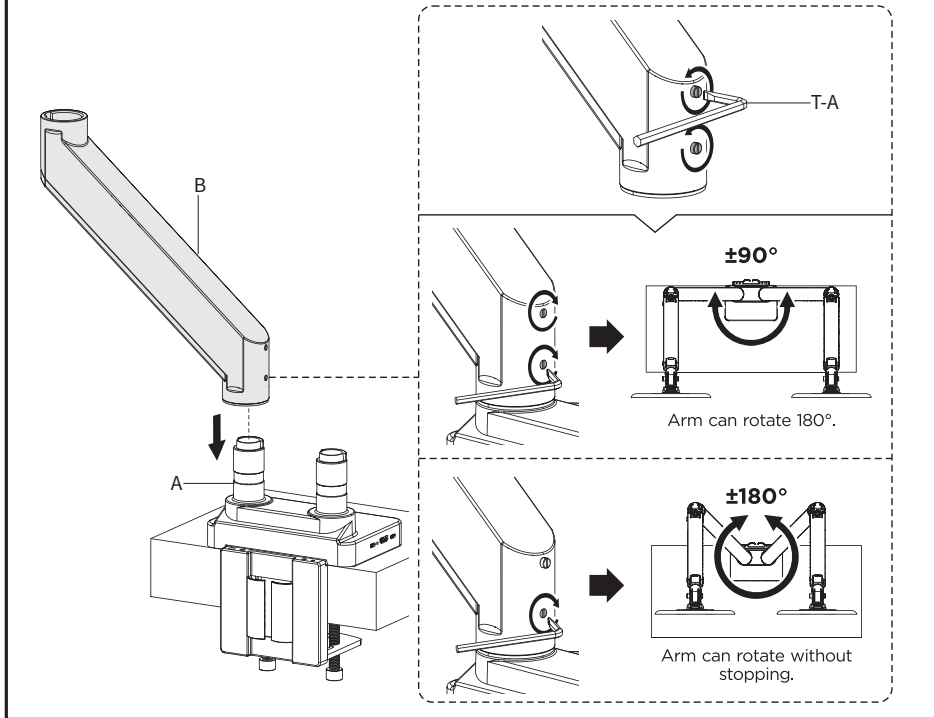


Remove the Clamp Bolts (J1) from Clamp (J) using 6mm Allen Wrench (T-C) if needed. Insert Clamp Bolt (J1) with Clamp Plate (E) up through the underside of the desk and tighten to the base assembly using 6mm Allen Wrench (T-C).



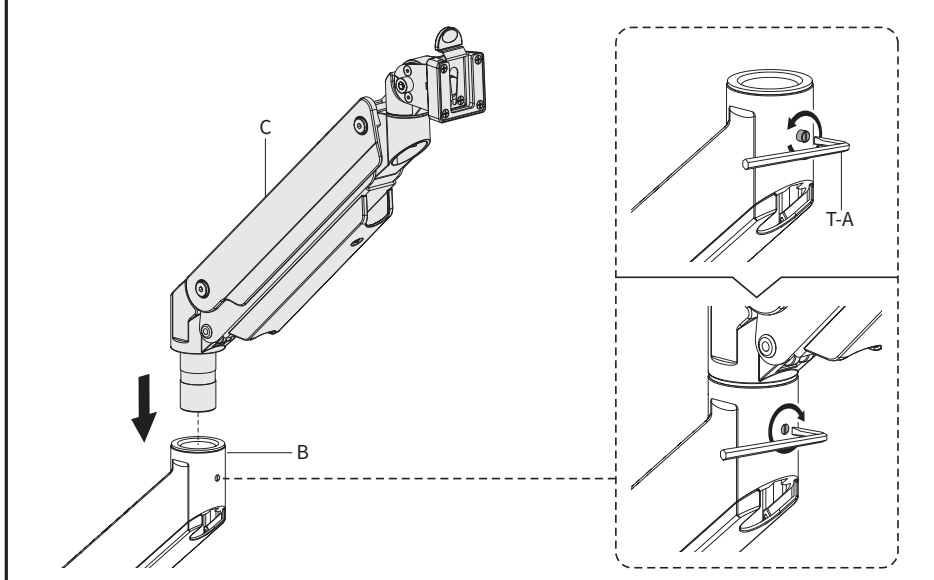
STEP 2

Loosen the set screws on the bottom of Lower Arms (**B**) using 3mm Allen Wrench (**T-A**). Attach Lower Arms (**B**) to Base (**A**). For 180° rotation, retighten both set screws. For 360° rotation, retighten the bottom set screw only.



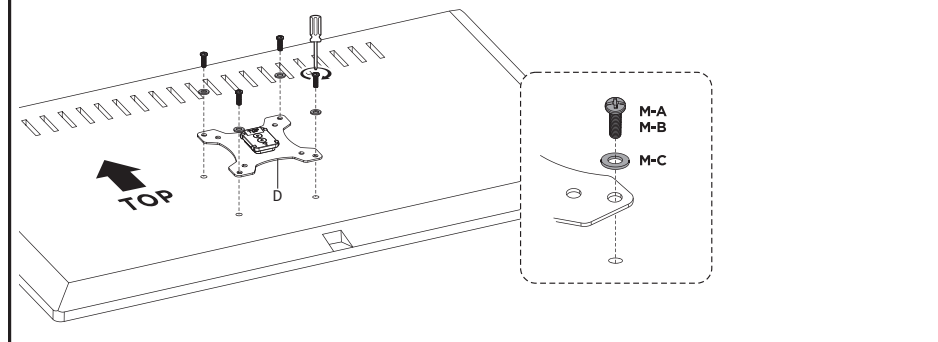
STEP 3

Loosen the set screw on the top of Lower Arm (**B**) using 3mm Allen Wrench (**T-A**). Attach Gas Spring Arm (**C**) to Lower Arm (**B**) and retighten the set screw.



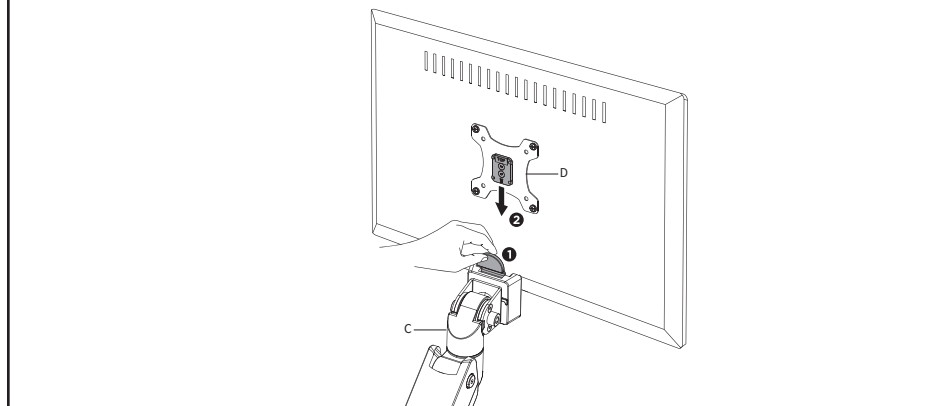
STEP 4

Assemble VESA Plates (**D**) to the back of the monitors using Screws (**M-A**, **M-B**) and M5 Washers (**M-C**). Tighten with a Phillips screwdriver.



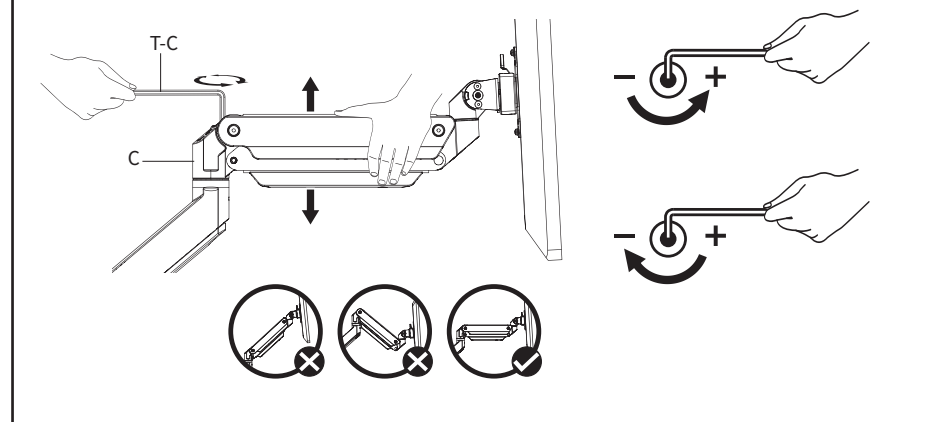
STEP 5

Pull back and hold the release levers on Gas Spring Arms (**C**), then slide the monitors with VESA Plates (**D**) onto the arms.



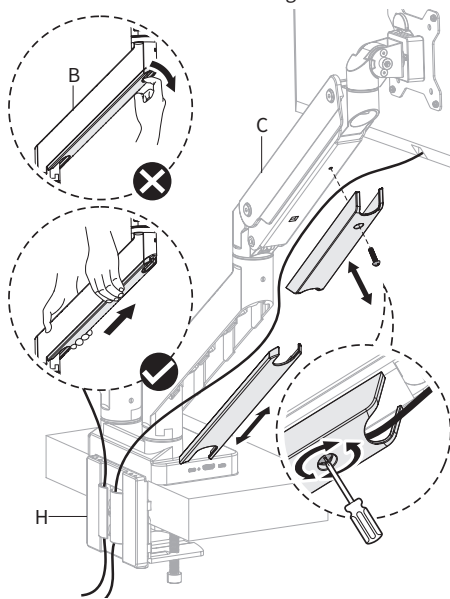
STEP 5

If needed, adjust Gas Spring Arms (**C**) to support the monitor using 6mm Allen Wrench (**T-C**). Turn the screw in back clockwise to decrease support, and counter-clockwise to increase.



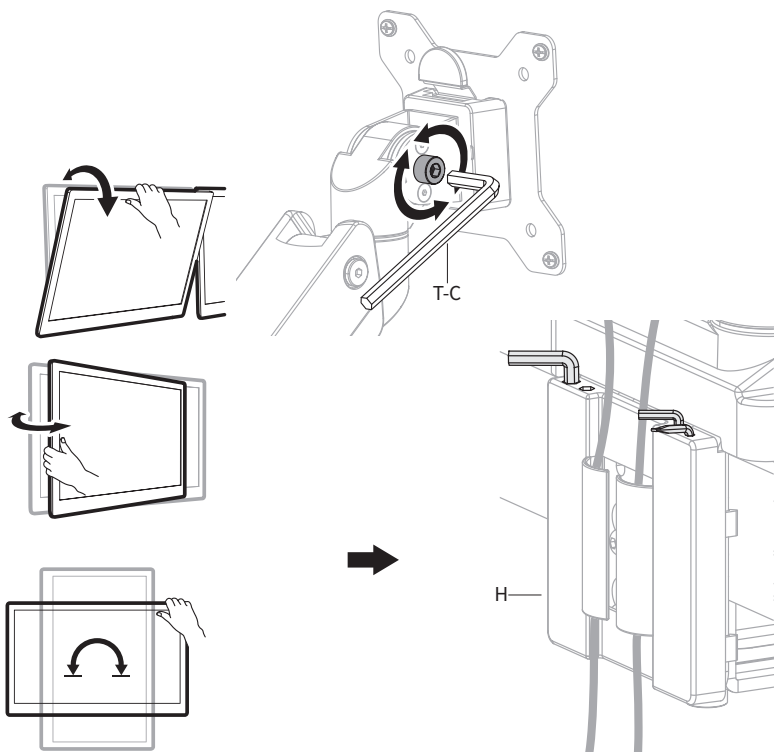
STEP 7


Remove the cable covers on Gas Spring Arms (**C**) using a Phillips screwdriver. Slide the cable covers on Lower Arms (**B**) forward to remove. Route cables through the arms and Cover (**H**), then reattach the cable covers.



STEP 8

Adjust the tilt using 6mm Allen Wrench (**T-C**). Store the Allen wrench set in Cover (**H**) for future adjustments.



 Love your new VIVO setup and want to share?
Tag us in your photo! **@vivo_us**

LAST UPDATED: 12/05/2022
REV1.1



Open **Monday - Friday 7:00am - 7:00pm** CST,
our dedicated support team can offer immediate assistance with rapid response times. If any parts are received damaged or defective, please contact us. We are happy to replace parts to ensure you have a fully functioning product.



309-278-5303

AVG. RESOLUTION TIME (*within office hrs*): **5M 4S**



www.vivo-us.com
Chat live with an agent!

AVG. RESOLUTION TIME (*within office hrs*): **< 15 M**



help@vivo-us.com

AVG. RESPONSE TIME (*within office hrs*): **1HR 8M**

- 23% within < 15m
- 38% within < 30m
- 61% within < 1hr
- 83% within < 2hr
- 92% within < 3hr

FOR MORE VIVO PRODUCTS, CHECK OUT OUR WEBSITE AT: www.vivo-us.com