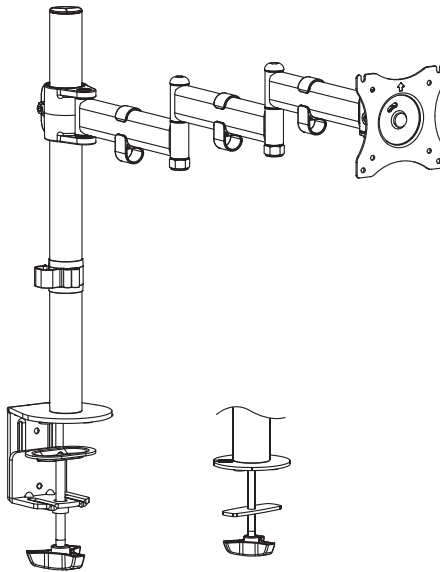




Single Monitor Desk Mount with Extra Long Arm

Instruction Manual



SKU: STAND-V101N



Scan the QR code with your mobile device or follow the link for helpful videos and specifications related to this product.

<https://vivo-us.com/products/stand-v101n>

GET IN TOUCH | Monday-Friday from 7:00am-7:00pm CST



help@vivo-us.com



www.vivo-us.com
Chat live with an agent!



309-278-5303



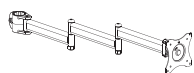
WARNING!

If you do not understand these directions, or if you have any doubts about the safety of the installation, please call a qualified technician. Check carefully to make sure there are no missing or defective parts. Improper installation may cause damage or serious injury. Do not use this product for any purpose that is not explicitly specified in this manual. Do not exceed weight capacity. We cannot be liable for damage or injury caused by improper mounting, incorrect assembly or inappropriate use.

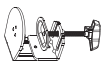
WARNING: CHOKING HAZARD

SMALL PARTS - NOT FOR CHILDREN UNDER 3 YEARS. ADULT SUPERVISION IS REQUIRED.

PACKAGE CONTENTS



A (x1)
Arm



B (x1)
Clamp



C (x1)
Pole



D (x1)
Pole Cap



E (x1)
Grommet Plate



F (x3)
Arm Cable Clip



G (x1)
Support Plate



H (x1)
Pole Cable Clip



I (x5)
Rubber Pad



S-A (x3)
M6x16mm Screw



M-A (x4)
M4x12mm Screw



M-B (x4)
M5x12mm Screw



M-C (x4)
M5 Washer



T-A (x1)
4mm Allen Wrench



T-B (x1)
5mm Allen Wrench



T-C (x1)
6mm Allen Wrench



T-D (x1)
8mm Allen Wrench



T-E (x1)
19mm Wrench

NOTE: SOME HARDWARE MAY NOT BE USED

TOOLS NEEDED



**Phillips
Screwdriver**

DO NOT EXCEED WEIGHT CAPACITY.

Failure to do so may result in serious injury.



ASSEMBLY STEPS

STEP 1

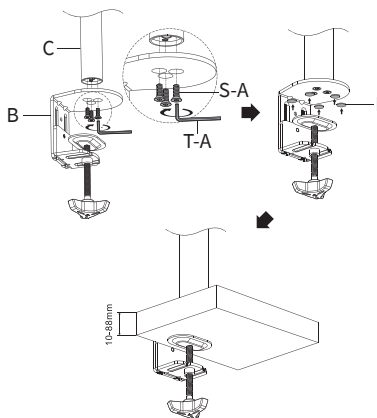
Insert Pole Cap (**D**) into the top of Pole (**C**).



STEP 2

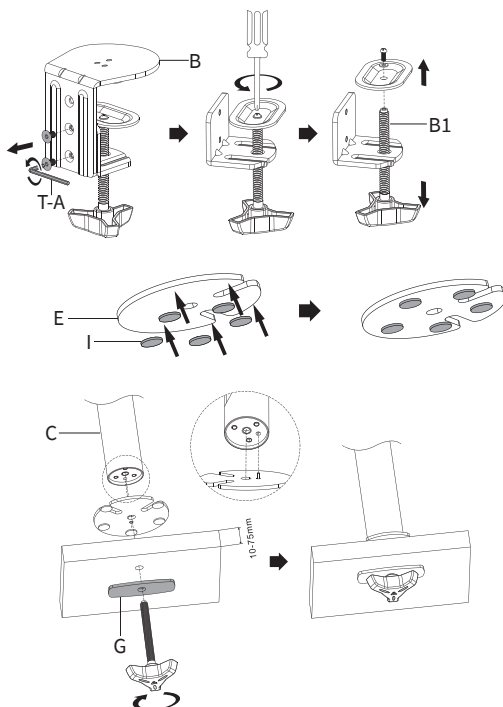
OPTION A: Clamp Installation

Mount Pole (**C**) to Clamp (**B**) using M6x16mm Screws (**S-A**). Tighten using 4mm Allen Wrench (**T-A**). Apply the Rubber Pads (**I**) to the underside of Clamp (**B**), then attach Clamp (**B**) to the desktop.



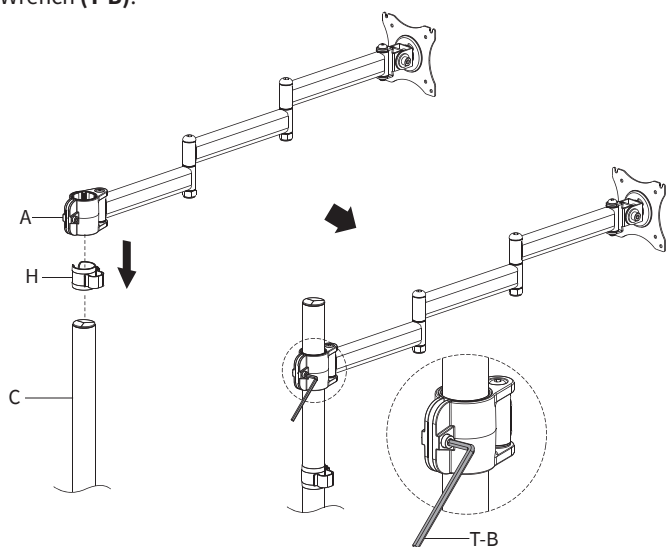
OPTION B: Grommet Base Installation

Separate Clamp (**B**) by removing the screws in back with 4mm Allen Wrench (**T-A**). Remove the screw from the top of Clamp Bolt (**B1**), then remove Clamp Bolt (**B1**). Apply Rubber Pads (**I**) to the bottom of Grommet Base (**E**). Place Support Plate (**G**) onto Clamp Bolt (**B1**), then insert Clamp Bolt (**B1**) through the grommet hole and thread into Pole (**C**) as shown in the diagram.



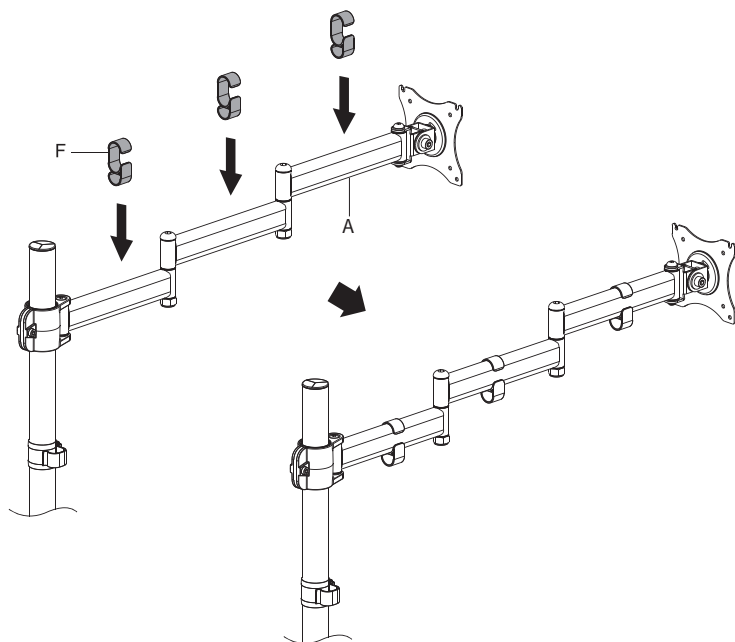
STEP 3

Slide Pole Cable Clip (**H**) and Arm (**A**) onto Pole (**C**). Secure Arm (**A**) to Pole (**C**) using 5mm Allen Wrench (**T-B**).



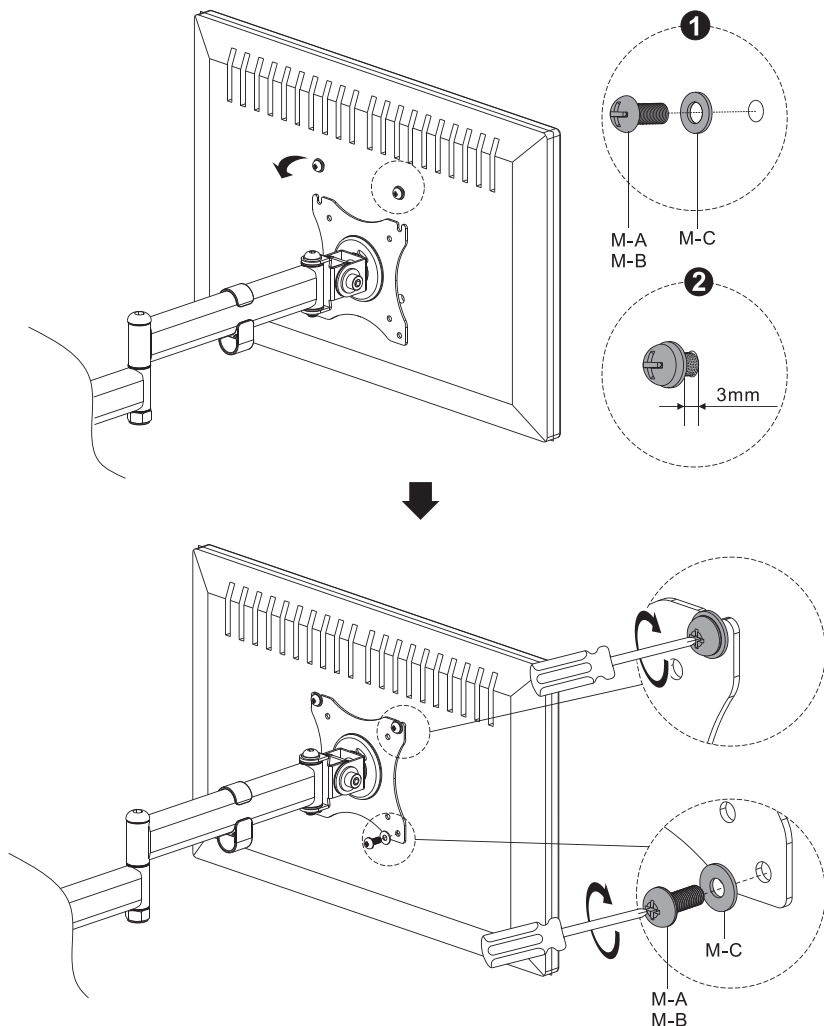
STEP 4

Attach Arm Cable Clips (**F**) to Arm (**A**) as shown.



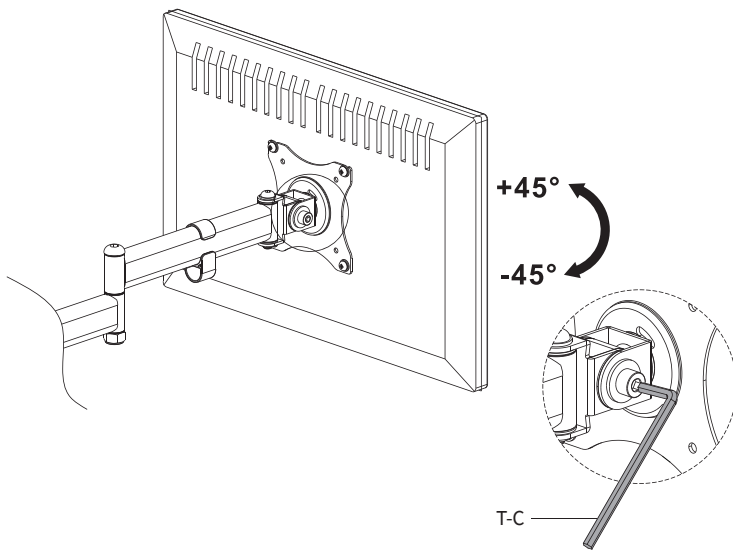
STEP 5

Insert two screws (**M-A or M-B**) and M5 Washers (**M-C**) into the top mounting holes of the monitor, making sure to leave 3mm of thread exposed. Align screws in monitor over the slots in the VESA plate. Secure using two more Screws (**M-A or M-B**) and M5 Washers (**M-C**) in the bottom two holes of the monitor. Tighten all four screws using a Phillips screwdriver.



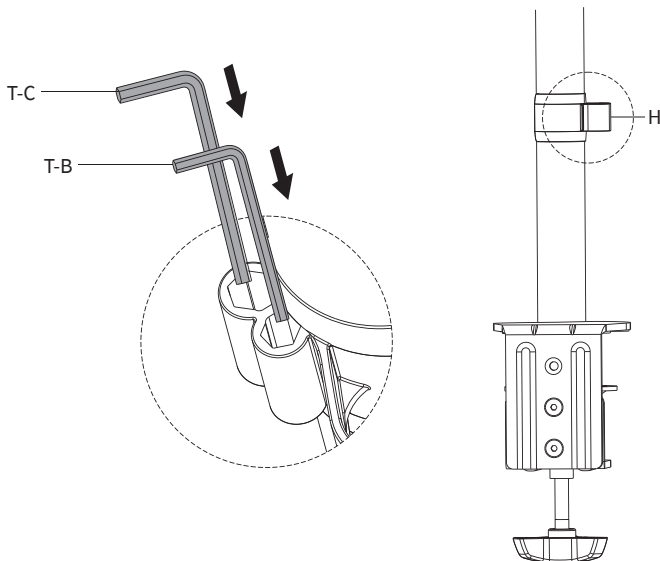
STEP 6

Adjust the tilt joint using 6mm Allen Wrench (**T-C**).



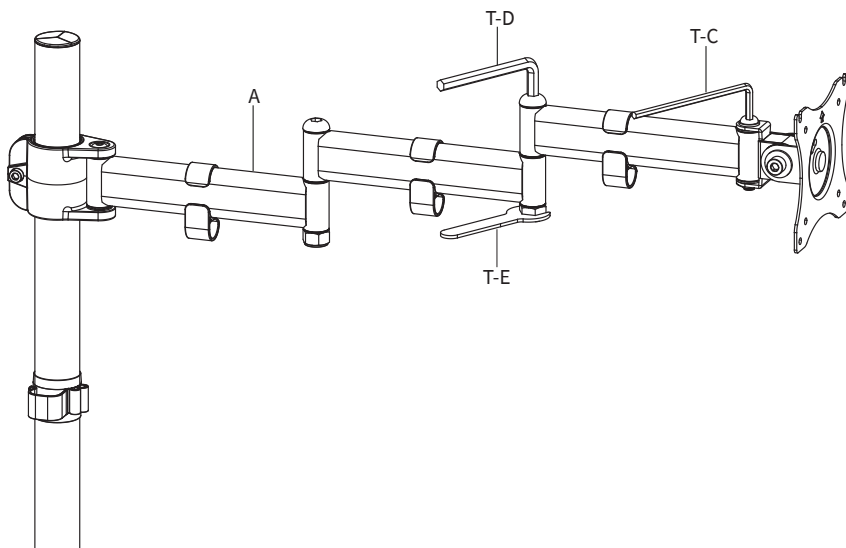
STEP 7

Store 5mm Allen Wrench (**T-B**) and 6mm Allen Wrench (**T-C**) in Pole Cable Clip (**H**) for future adjustments.



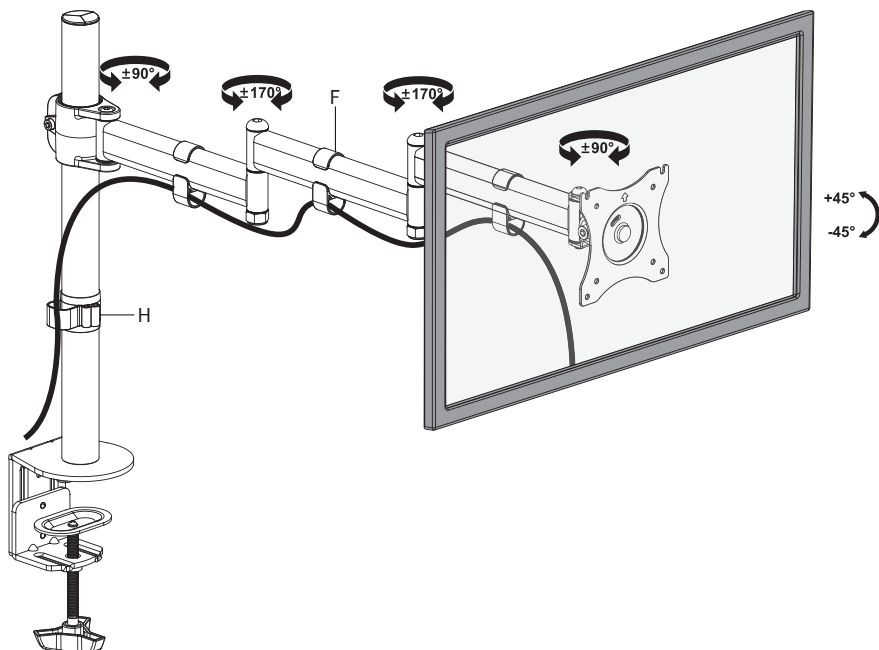
STEP 8

Tighten the joints in Arm **(A)** using 8mm Allen Wrench **(T-D)** with 19mm Wrench **(T-E)** and 6mm Allen Wrench **(T-C)**.



STEP 9

Route cables through Arm Cable Clips **(F)** and Pole Cable Clips **(H)**.





Love your new VIVO setup and want to share?
Tag us in your photo! **@vivo_us**

LAST UPDATED: 06/01/2022

REV3



Open **Monday - Friday 7:00am - 7:00pm CST**,
our dedicated support team can offer immediate assistance with rapid response times. If any
parts are received damaged or defective, please contact us. We are happy to replace parts to
ensure you have a fully functioning product.



309-278-5303

AVG. RESOLUTION TIME (*within office hrs*): **5M 4S**



www.vivo-us.com
Chat live with an agent!

AVG. RESOLUTION TIME (*within office hrs*): **< 15 M**



help@vivo-us.com

AVG. RESPONSE TIME (*within office hrs*): **1HR 8M**

- 23% within < 15m
- 38% within < 30m
- 61% within < 1hr
- 83% within < 2hr
- 92% within < 3hr

FOR MORE VIVO PRODUCTS, CHECK OUT OUR WEBSITE AT: www.vivo-us.com