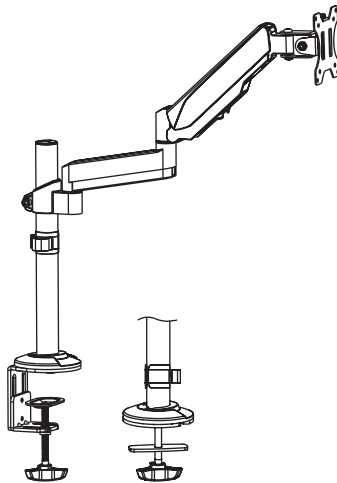




---

## Pneumatic Arm Single Monitor Desk Mount Instruction Manual



**SKU: STAND-V101H**



Scan the QR code with your mobile device or follow the link for helpful videos and specifications related to this product.

<https://vivo-us.com/products/stand-v101h>

---

**GET IN TOUCH** | Monday-Friday from 7:00am-7:00pm CST



help@vivo-us.com



www.vivo-us.com  
*Chat live with an agent!*



309-278-5303

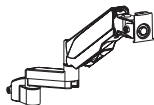
# **WARNING!**

If you do not understand these directions, or if you have any doubts about the safety of the installation, please call a qualified technician. Check carefully to make sure there are no missing or defective parts. Improper installation may cause damage or serious injury. Do not use this product for any purpose that is not explicitly specified in this manual. Do not exceed weight capacity. We cannot be liable for damage or injury caused by improper mounting, incorrect assembly or inappropriate use.

## **WARNING: CHOKING HAZARD**

SMALL PARTS - NOT FOR CHILDREN UNDER 3 YEARS. ADULT SUPERVISION IS REQUIRED.

### PACKAGE CONTENTS



**A** (x1)  
Monitor Arm



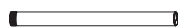
**B** (x1)  
Clamp



**C** (x1)  
Clamp Brace



**D** (x1)  
Grommet Base



**E** (x1)  
Pole



**F** (x1)  
Base Cover



**G** (x1)  
VESA Plate



**H** (x1)  
Support Plate



**I** (x1)  
Cable Clip



**J** (x5)  
Rubber Pad



**S-A** (x2)  
M6x10mm Screw



**S-B** (x1)  
Thumbscrew



**M-A** (x4)  
M4x12mm Screw



**M-B** (x4)  
M4x16mm Screw



**M-C** (x4)  
M5x12mm Screw



**M-D** (x4)  
M5x16mm Screw



**M-E** (x4)  
M5 Washer



**M-F** (x4)  
Spacer



**T-A** (x1)  
3mm Allen Wrench

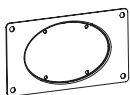


**T-B** (x1)  
4mm Allen Wrench



**T-C** (x1)  
6mm Allen Wrench

### FOR VESA ADAPTER:



**K** (x1)  
Adapter Plate



**S-C** (x4)  
M4x12mm Screw



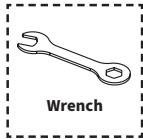
**S-D** (x4)  
M4 Nut



**S-E** (x8)  
M5 Washer

**NOTE:** SOME HARDWARE MAY NOT BE USED

## TOOLS NEEDED



DO NOT EXCEED WEIGHT CAPACITY.

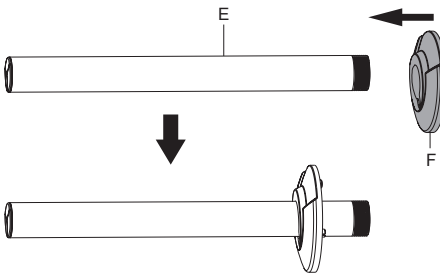
Failure to do so may result in serious injury.



## ASSEMBLY STEPS

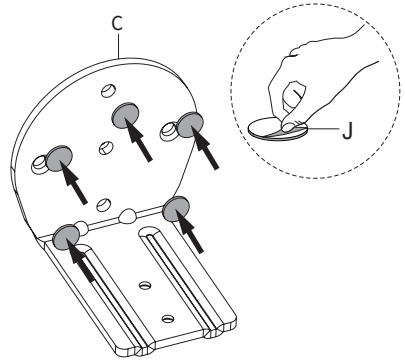
### STEP 1

Slide Base Cover (F) onto Pole (E).



### STEP 2

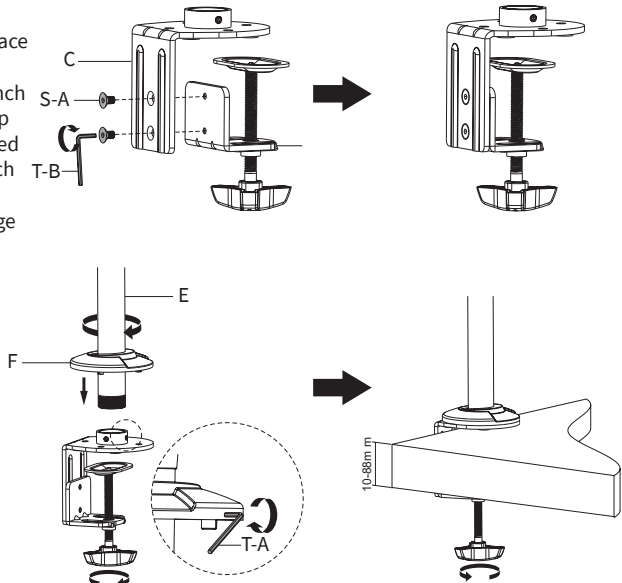
Stick Rubber Pads (J) to the underside of Clamp Brace (C). (Skip to Step 3 Option B if grommet base option will be used)



### STEP 3 (Option A)

#### Clamp Installation

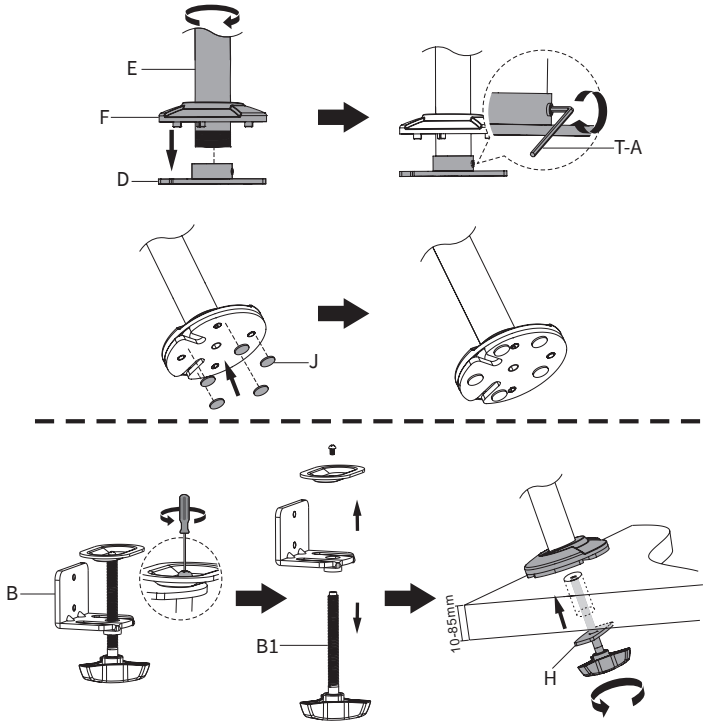
Assemble Clamp (B) to Clamp Brace (C) using M6x8mm Screws (S-A) and tighten with 4mm Allen Wrench (T-B). Thread Pole (E) onto Clamp Brace (C), and tighten pre-installed set screws with 3mm Allen Wrench (T-A). Press Base Cover (F) into place. Place assembly on the edge of the desk and tighten the hand bolt to secure.



### STEP 3 (Option B)

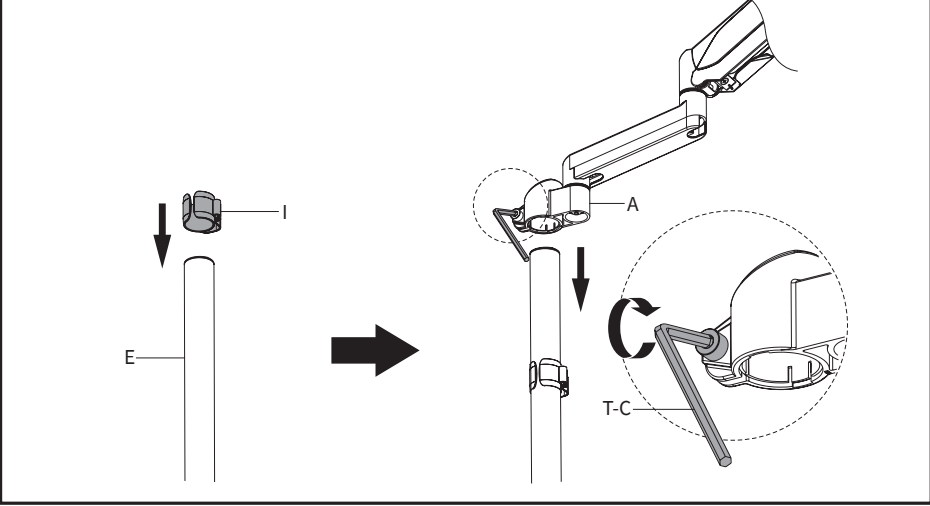
#### Grommet Base Installation

Thread Pole (E) onto Grommet Base (D), tighten pre-installed set screws with 3mm Allen Wrench (T-A), and press Base Cover (F) into place. Stick Rubber Pads (J) to the underside of Grommet Base (D). Remove screw from end of Hand Bolt (B1) on Clamp (B) and separate parts. Use Hand Bolt (B1) with Support Plate (H) to secure base assembly to grommet hole in desk.



### STEP 4

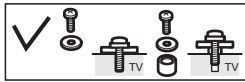
Slide Cable Clip (I) and Monitor Arm (A) onto Pole (E). Secure Monitor Arm (A) using 6mm Allen Wrench (T-C).



## STEP 5

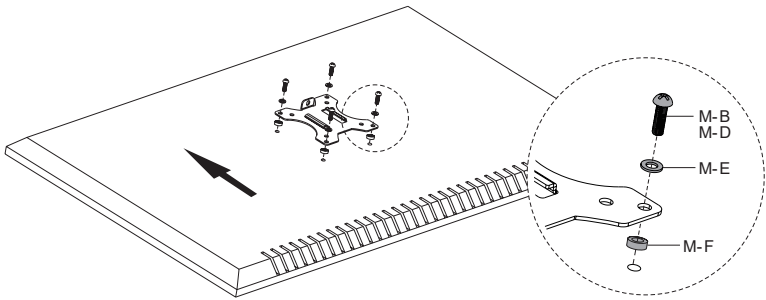
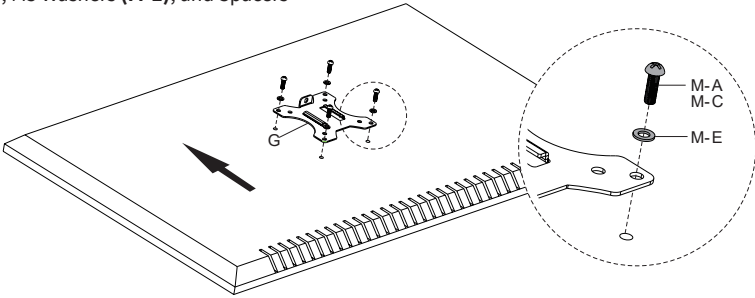
### OPTION A: Flat Back Monitor

For flat back monitors, install VESA Plate (G) to monitor using Screws (M-A) or (M-C) and M5 Washers (M-E).



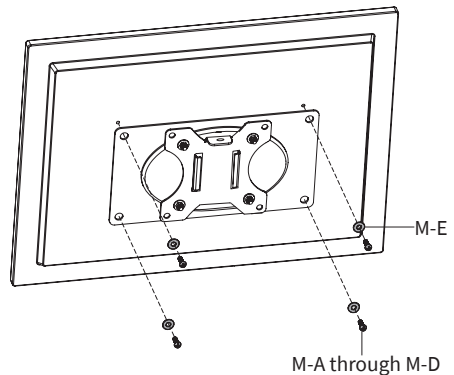
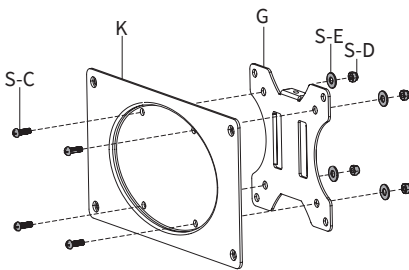
### OPTION B: Curved Back Monitor

For curved back monitors, install VESA Plate (G) to monitor using Screws (M-B) or (M-D), M5 Washers (M-E), and Spacers (M-F).



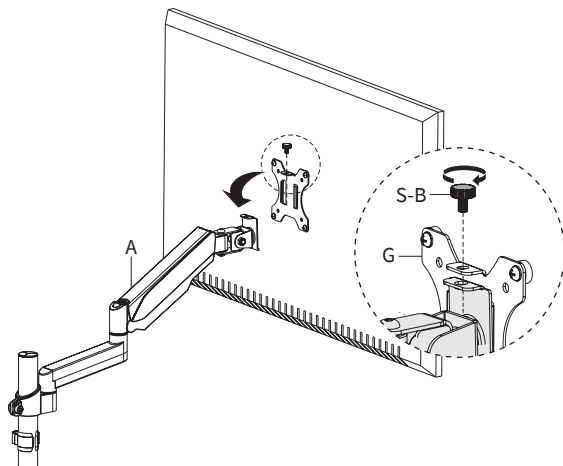
## FOR VESA ADAPTER:

If your monitor has a 200x100 VESA hole pattern, install Adapter Plate (K) to VESA Plate (G) using M4x12mm Screws (S-C), M4 Nuts (S-D), and M5 Washers (S-E). Install Adapter Plate (A) to the monitor using Screws (M-A through M-D) and M5 Washers (M-E).



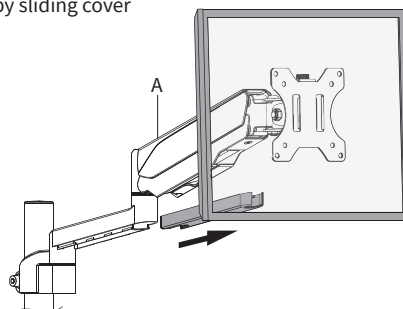
## STEP 6

Slide VESA Plate (**G**) over bracket on Monitor Arm (**A**). Secure using Thumbscrew (**S-B**).



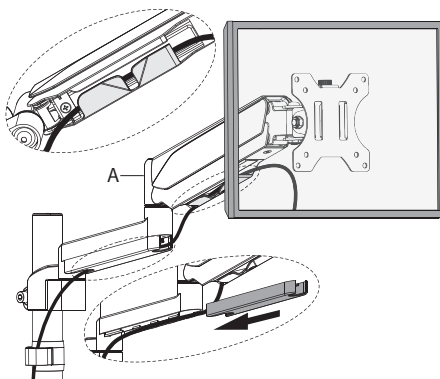
## STEP 7

Remove bottom cover from Monitor Arm (**A**) by sliding cover forward and off.



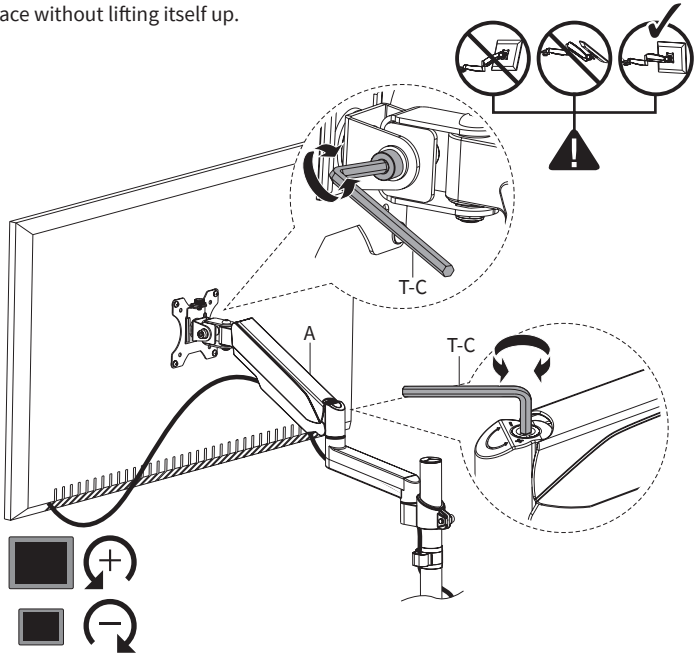
## STEP 8

Run cables through bottom of Monitor Arm (**A**). Reattach cover.



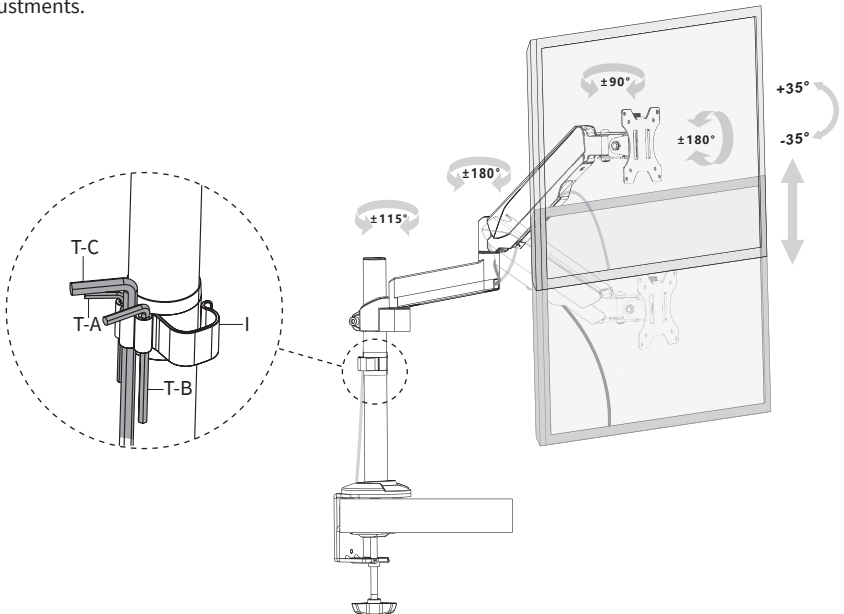
## STEP 9

Adjust tension in Monitor Arm (**A**) and angle of monitor using 6mm Allen Wrench (**T-C**). Clockwise reduces tension, counterclockwise increases tension. The tension should be just enough to hold your monitor in place without lifting itself up.



## STEP 10

Adjust monitor to desired position and store Allen Wrenches (**T-A**, **T-B**, **T-C**) in Cable Clip (**I**) for future adjustments.





Open **Monday - Friday 7:00am - 7:00pm** CST,  
our dedicated support team can offer immediate assistance with rapid response times. If any parts are received damaged or defective, please contact us. We are happy to replace parts to ensure you have a fully functioning product.



309-278-5303

**AVG. RESOLUTION TIME** (*within office hrs*): **5M 4S**



[www.vivo-us.com](http://www.vivo-us.com)  
*Chat live with an agent!*

**AVG. RESOLUTION TIME** (*within office hrs*): **< 15 M**



[help@vivo-us.com](mailto:help@vivo-us.com)

**AVG. RESPONSE TIME** (*within office hrs*): **1HR 8M**

- 23% within < 15m
- 38% within < 30m
- 61% within < 1hr
- 83% within < 2hr
- 92% within < 3hr