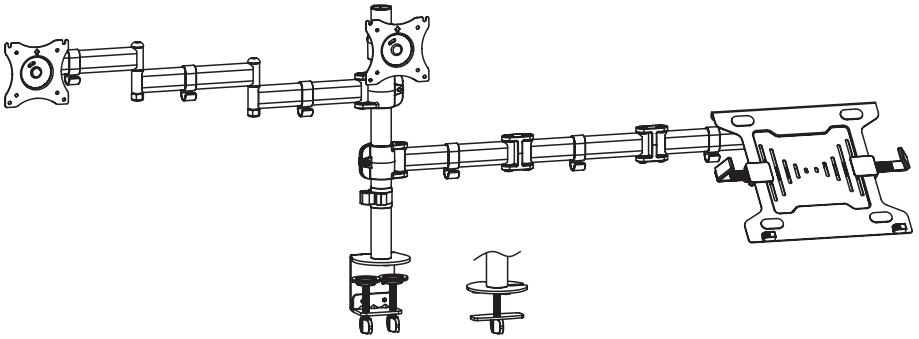


Black Dual Monitor + Single Laptop Desk Mount Instruction Manual



SKU: STAND-V013L



Scan the QR code with your mobile device or follow the link for helpful videos and specifications related to this product.

<https://vivo-us.com/products/stand-v013L>

GET IN TOUCH | Monday-Friday from 7:00am-7:00pm CST



help@vivo-us.com



www.vivo-us.com
Chat live with an agent!



309-278-5303

WARNING!

If you do not understand these directions, or if you have any doubts about the safety of the installation, please call a qualified technician. Check carefully to make sure there are no missing or defective parts. Improper installation may cause damage or serious injury. Do not use this product for any purpose that is not explicitly specified in this manual. Do not exceed weight capacity. We cannot be liable for damage or injury caused by improper mounting, incorrect assembly or inappropriate use.

TIPOVER WARNING

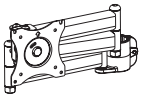
- SERIOUS OR FATAL CRUSHING INJURIES CAN OCCUR FROM TIPOVER. TO HELP PREVENT TIPOVER:
- NEVER ALLOW CHILDREN TO CLIMB, STAND, HANG, OR PLAY ON ANY PART OF MONITOR OR STAND.
 - USE TIPOVER RESTRAINT OR ANCHOR STAND TO WALL.

USE OF TIPOVER RESTRAINTS MAY ONLY REDUCE, BUT NOT ELIMINATE RISK OF TIPOVER.

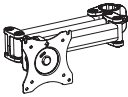
WARNING: CHOKING HAZARD

SMALL PARTS - NOT FOR CHILDREN UNDER 3 YEARS. ADULT SUPERVISION IS REQUIRED.

PACKAGE CONTENTS



A (x1)
Monitor Arm



B (x1)
Laptop Arm



C (x1)
Upper Clamp



D (x1)
Lower Clamp



E (x1)
VESA Bracket



F (x1)
Laptop Tray



G (x1)
Pole



H (x2)
Laptop Arm



I (x2)
Clip



J (x1)
Grommet Plate



K (x6)
Arm Cable Clips



L (x1)
Pole Cable Clip



M (x1)
Support Plate



N (x5)
Pads



S-A (x2)
M6x10mm
Screw



S-B (x3)
M6x16mm
Screw



S-C (x4)
M4x8mm
Screw



M-A (x12)
M4x12mm
Screw



M-B (x12)
M5x12mm
Screw



M-C (x12)
M5 Washer



T-A (x1)
4mm Allen
Wrench



T-B (x1)
5mm Allen
Wrench



T-C (x1)
6mm Allen
Wrench

NOTE: SOME HARDWARE MAY NOT BE USED

TOOLS NEEDED



DO NOT EXCEED WEIGHT CAPACITY.

Failure to do so may result in serious injury.

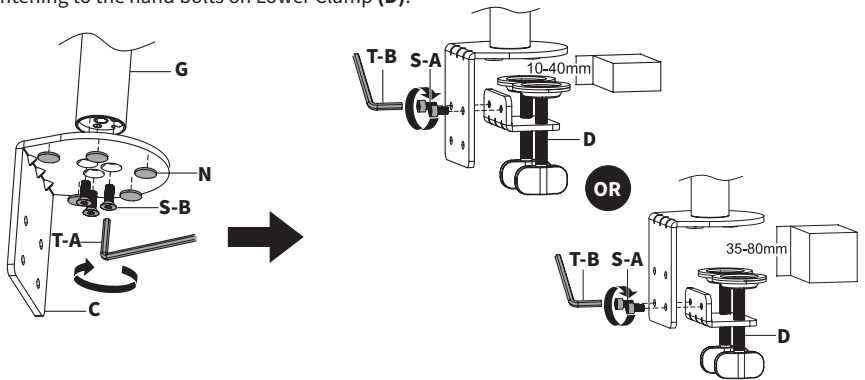
15.4 lbs
Per Arm
(7 kg)

ASSEMBLY STEPS

STEP 1

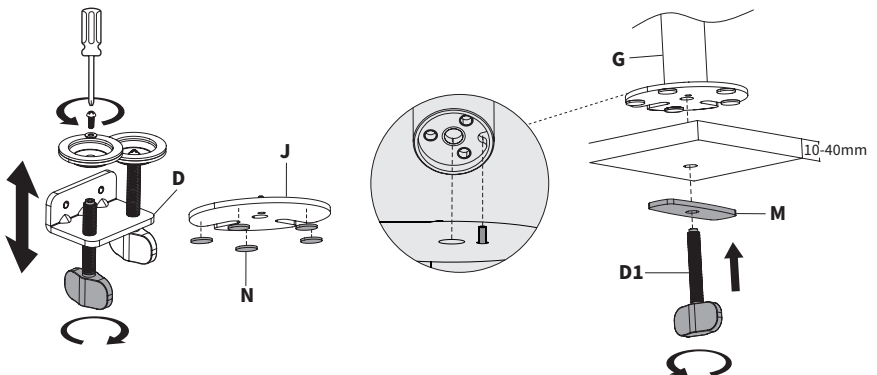
OPTION A: Clamp Installation

Install Upper Clamp (C) to Pole (G) using M6x16mm Screws (S-B) and 4mm Allen Wrench (T-A). Apply Pads (N) to the underside of Upper Clamp (C) as shown below. Then attach Lower Clamp (D) to Upper Clamp (C) using M6x10mm Screws (S-A) and 5mm Allen Wrench (T-B) using either the top or bottom holes in Upper Clamp, based on desktop thickness. Secure the clamp assembly to the desktop by tightening to the hand bolts on Lower Clamp (D).



OPTION B: Existing Grommet Base Installation

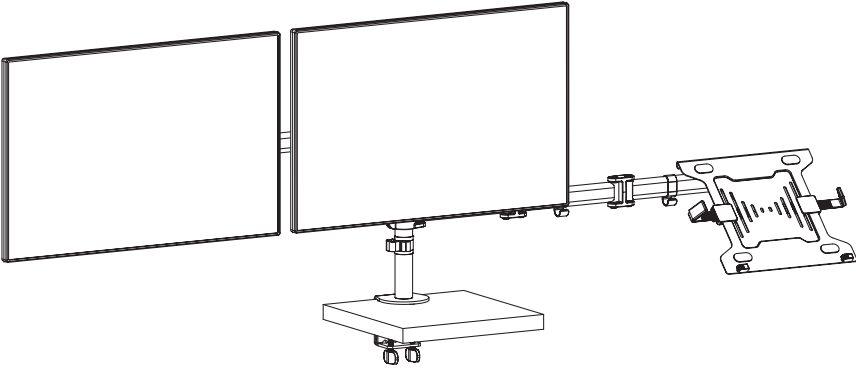
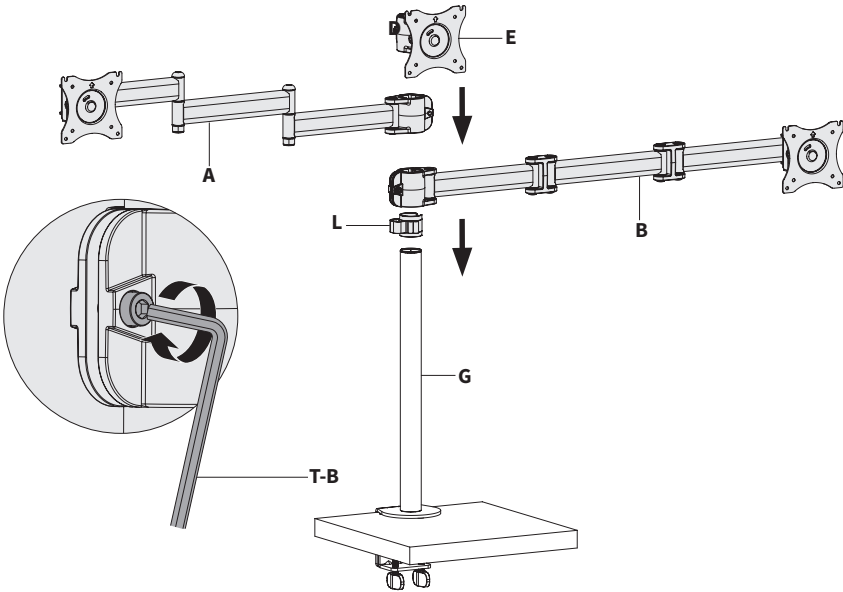
The grommet installation will make use of one Hand Bolt (D1) from Lower Clamp (D). To remove, use a Phillips screwdriver to remove the small screw from the top of Hand Bolt (D1) and unscrew Hand Bolt (D1) from Lower Clamp (D). Apply Pads (N) to Grommet Plate (J). Place the pole assembly over grommet hole in desk, and connect using Support Plate (M) and previously removed Hand Bolt (D1) from underneath desk, as shown. Secure by tightening Hand Bolt (D1).



STEP 2 (Option A)

SIDE LAPTOP MOUNTING:

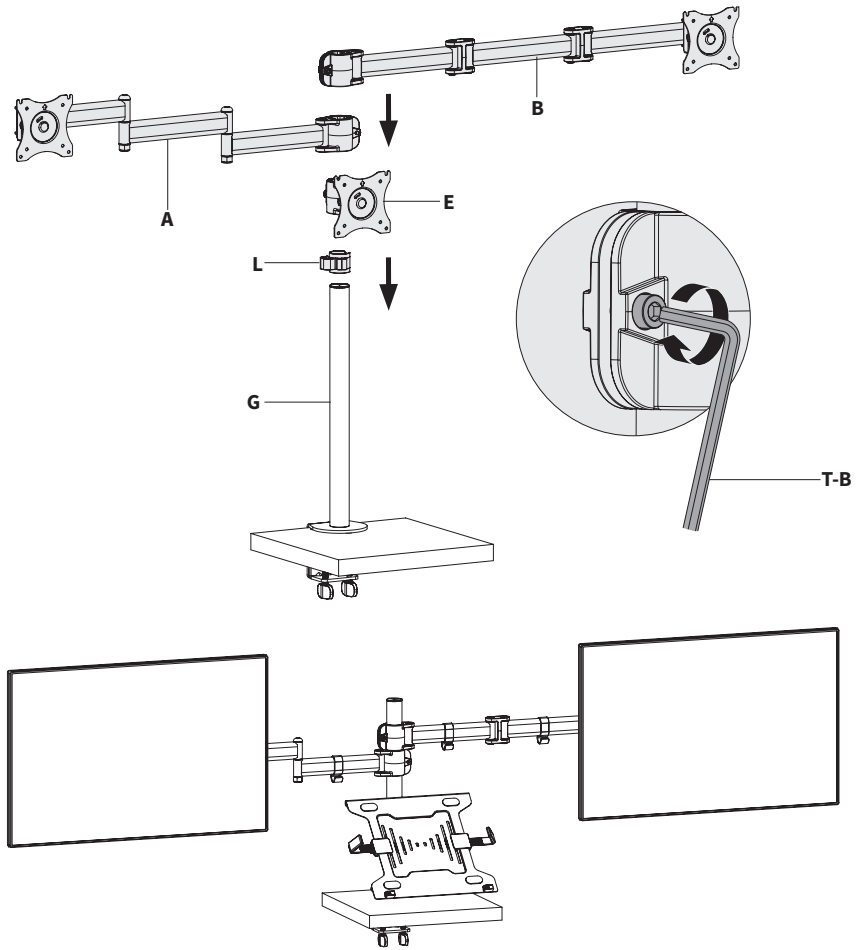
Slide Pole Cable Clip (**L**) onto the Pole (**G**). Assemble Laptop Arm (**B**), Monitor Arm (**A**), and VESA Bracket (**E**) on to Pole (**G**) and secure using 5mm Allen Wrench (**T-B**).



STEP 2 (Option B)

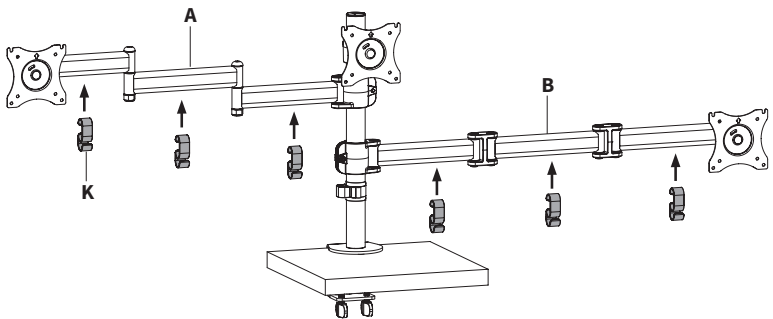
CENTER LAPTOP MOUNTING:

Slide Pole Cable Clip (**L**) onto the Pole (**G**). Assemble VESA Bracket (**E**), Monitor Arm (**A**) and Laptop Arm (**B**), and on to Pole (**G**) and secure using 5mm Allen Wrench (**T-B**).



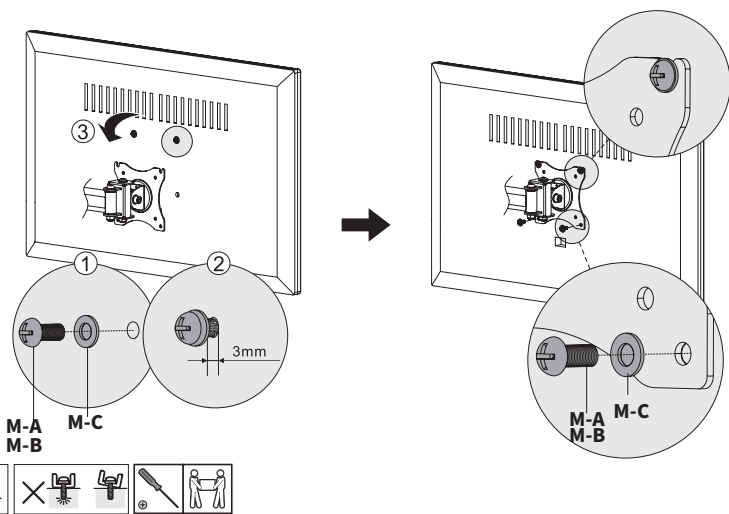
STEP 3

Install Arm Cable Clips (**K**) to Monitor Arm (**A**) and Laptop Arm (**B**).



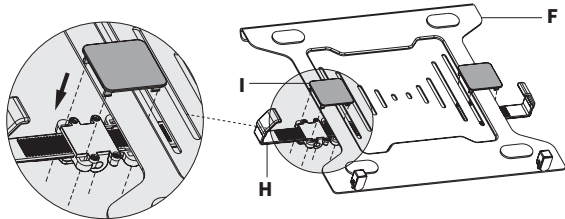
STEP 4

Install two mounting screws (**M-A or M-B**) with Washers (**M-C**) onto top holes of each monitor, leaving a 3mm gap. Slide monitors onto respective Mount Arm (**A**) and VESA Mount (**E**) and insert two mounting screws (**M-A or M-B**) with Washers (**M-C**) into remaining holes and tighten using a Phillips screwdriver.

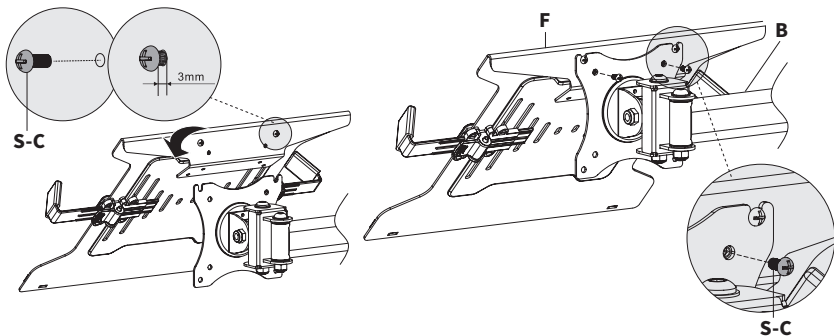


STEP 5

Place Laptop Arms (**H**) underneath each side of Laptop Tray (**F**), aligning square holes in Laptop Arms (**H**) with the edge and long slot on each side. Insert Clips (**I**) through top to secure Laptop Arms (**H**), making sure all four locks on each Clip (**I**) are engaged with square holes in Laptop Arms (**H**).

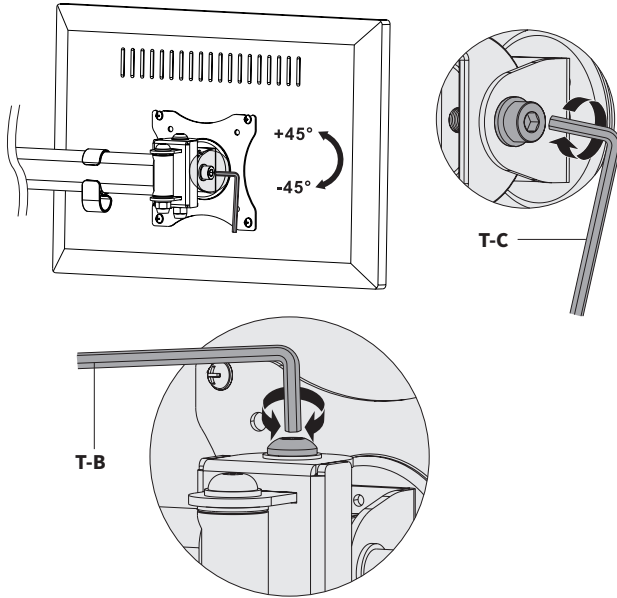


Insert two M4x8mm Screws (**S-C**) into the top holes of Laptop Tray (**F**), leaving a 3mm gap. Slide Laptop Tray (**F**) onto Laptop Arm (**B**) VESA plate and tighten screws. Install final two M4x8mm Screws (**S-C**) into bottom VESA holes to secure.



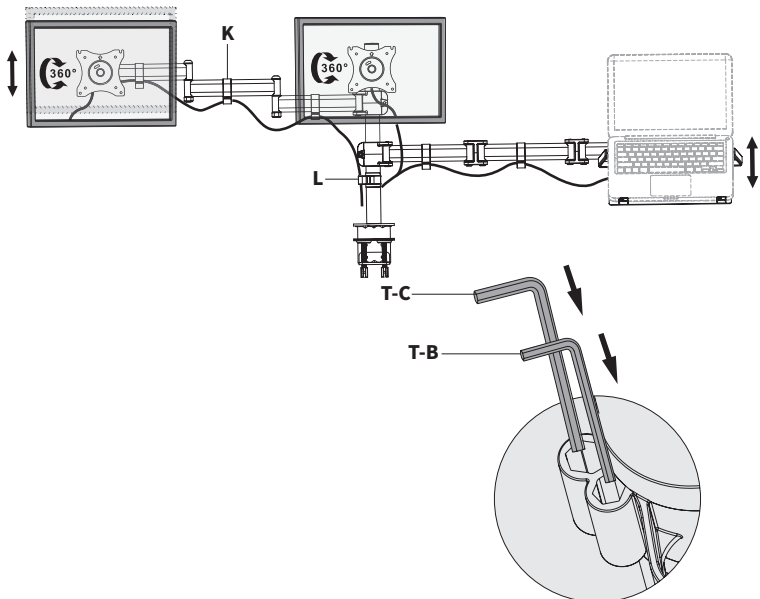
STEP 6

Adjust tilt on Mount Arm (A) and Laptop Arm (B) using 6mm Allen Wrench (T-C). To level height of monitors, use 5mm Allen Wrench (T-B).



STEP 7

Route cables through Arm Cable Clips (K) and Pole Cable Clip (L). Store 5mm Allen Wrench (T-B) and 6mm Allen Wrench (T-C) in Pole Cable Clip (L) for future adjustments.





Love your new VIVO setup and want to share?
Tag us in your photo! **@vivo_us**

LAST UPDATED: 08/10/2022
REV1.2



Open **Monday - Friday 7:00am - 7:00pm** CST,
our dedicated support team can offer immediate assistance with rapid response times. If any parts are received damaged or defective, please contact us. We are happy to replace parts to ensure you have a fully functioning product.



309-278-5303

AVG. RESOLUTION TIME (*within office hrs*): **5M 4S**



www.vivo-us.com
Chat live with an agent!

AVG. RESOLUTION TIME (*within office hrs*): **< 15 M**



help@vivo-us.com

AVG. RESPONSE TIME (*within office hrs*): **1HR 8M**

- 23% within < 15m
- 38% within < 30m
- 61% within < 1hr
- 83% within < 2hr
- 92% within < 3hr

FOR MORE VIVO PRODUCTS, CHECK OUT OUR WEBSITE AT: www.vivo-us.com