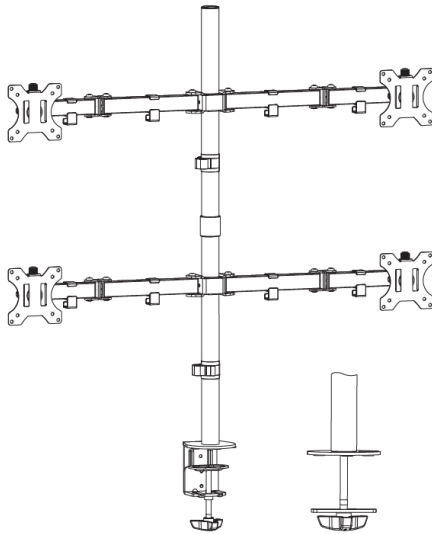




---

## Quad Monitor Desk Mount

### Instruction Manual



**SKU: STAND-V004**



Scan the QR code with your mobile device or follow the link for helpful videos and specifications related to this product.

<https://vivo-us.com/products/stand-v004>

---

**GET IN TOUCH** | Monday-Friday from 7:00am-7:00pm CST



help@vivo-us.com



www.vivo-us.com  
*Chat live with an agent!*



309-278-5303

# ⚠️ WARNING!

If you do not understand these directions, or if you have any doubts about the safety of the installation, please call a qualified technician. Check carefully to make sure there are no missing or defective parts. Improper installation may cause damage or serious injury. Do not use this product for any purpose that is not explicitly specified in this manual. Do not exceed weight capacity. We cannot be liable for damage or injury caused by improper mounting, incorrect assembly or inappropriate use.

## ⚠️ TIPOVER WARNING

SERIOUS OR FATAL CRUSHING INJURIES CAN OCCUR FROM TIPOVER. TO HELP PREVENT TIPOVER:

- NEVER ALLOW CHILDREN TO CLIMB, STAND, HANG, OR PLAY ON ANY PART OF MONITOR OR STAND.
- USE TIPOVER RESTRAINT OR ANCHOR STAND TO WALL.

**USE OF TIPOVER RESTRAINTS MAY ONLY REDUCE, BUT NOT ELIMINATE RISK OF TIPOVER.**

## ⚠️ WARNING: CHOKING HAZARD

SMALL PARTS - NOT FOR CHILDREN UNDER 3 YEARS. ADULT SUPERVISION IS REQUIRED.

## PACKAGE CONTENTS



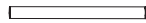
**A (x4)**  
VESA Plate



**B (x2)**  
Arm



**C (x1)**  
Clamp



**D (x1)**  
Bottom Pole



**E (x1)**  
Top Pole



**F (x1)**  
Pole Adapter



**G (x2)**  
Pole Cable Clip



**H (x1)**  
Grommet Base



**I (x4)**  
VESA Cap



**J (x1)**  
Pole Cap



**K (x5)**  
Rubber Pad



**L (x8)**  
Arm Cable Clip



**M (x1)**  
Support Plate



**S-A (x4)**  
M3x8mm Screw



**S-B (x3)**  
M5x16mm Screw



**M-A (x16)**  
M4x12mm Screw



**M-B (x16)**  
M4x16mm Screw



**M-C (x16)**  
M5x12mm Screw



**M-D (x16)**  
M5x16mm Screw



**M-E (x16)**  
M5 Washer



**M-F (x16)**  
Spacer



**T-A (x1)**  
3mm Allen Wrench



**T-B (x1)**  
4mm Allen Wrench



**T-C (x1)**  
5mm Allen Wrench



**T-D (x1)**  
6mm Allen Wrench

### TOOLS NEEDED



**NOTE: SOME HARDWARE INCLUDED MAY NOT BE USED**

**DO NOT EXCEED WEIGHT CAPACITY.**

Failure to do so may result in serious injury.

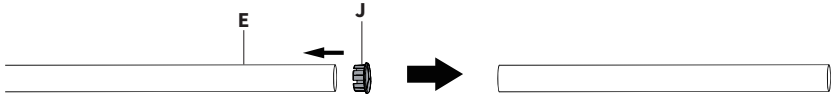


**PER ARM**

# ASSEMBLY STEPS

## STEP 1

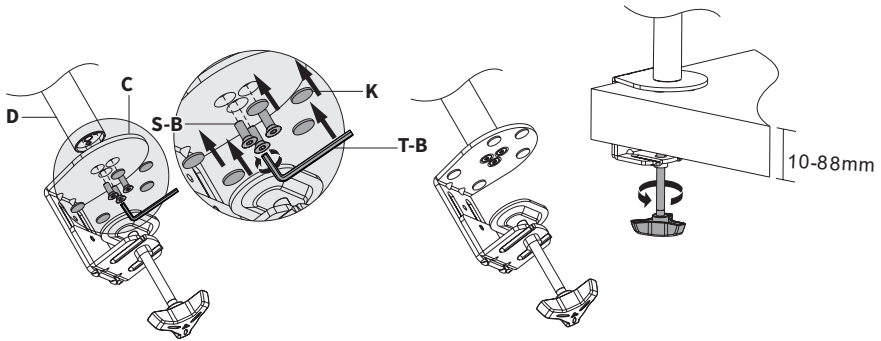
Attach Pole Cap (J) to top of Top Pole (E).



## STEP 2

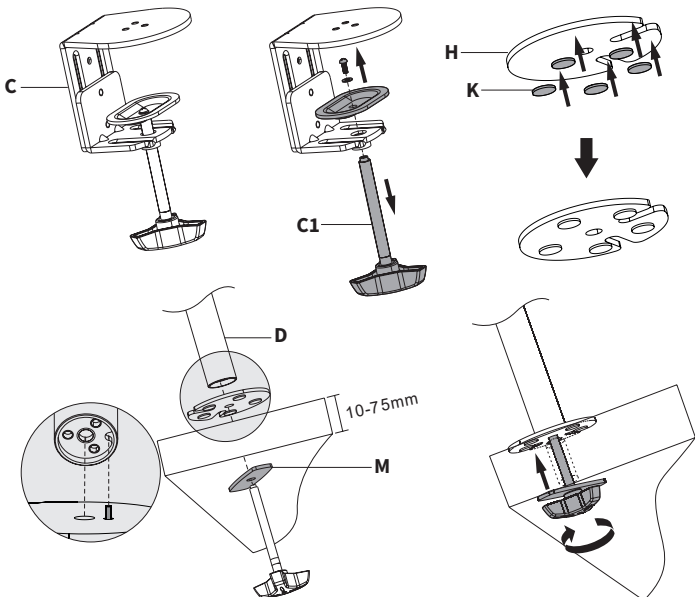
### OPTION A: Clamp Installation

Apply Rubber Pads (K) to Clamp (C) as shown in diagram. Attach Clamp (C) to Bottom Pole (D) with M5x16mm Screws (S-B) using 4mm Allen Wrench (T-B). Secure Clamp (C) to desk.



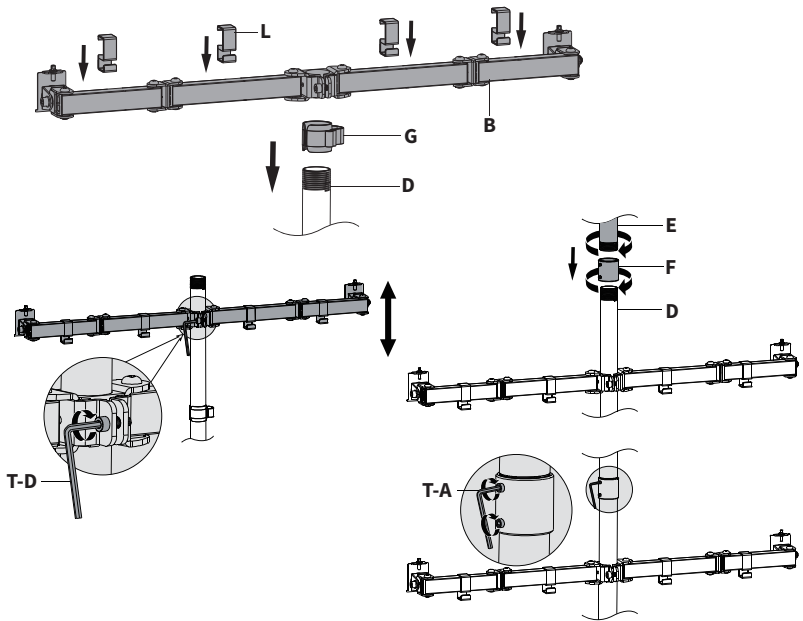
### OPTION B: Grommet Base Installation

Remove Clamp Screw (C1) from Clamp (C). Apply Rubber Pads (K) to Grommet Base (H) as shown in diagram. Place on desk. Put Support Plate (M) on Clamp Screw (C1). Insert Clamp Screw (C1) through desk and Grommet Base (H) from below. thread onto Bottom Pole (D).



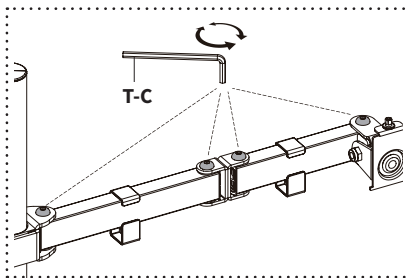
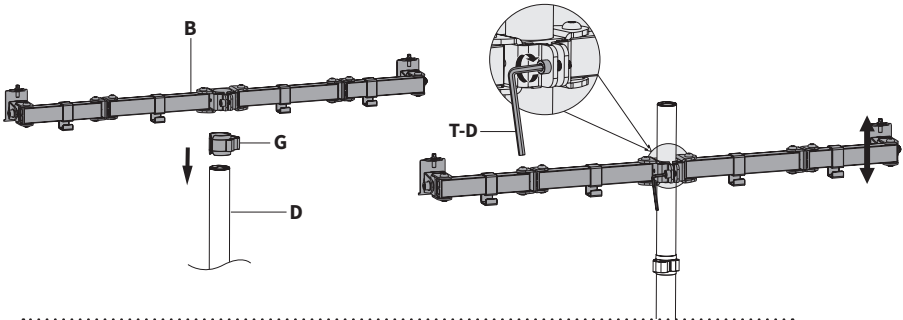
### STEP 3

Slide one Pole Cable Clip (G) onto Bottom Pole (D) and Arm Cable Clips (L) onto Arms (B). Slide Arm (B) onto Bottom Pole (D) and tighten in place using 6mm Allen Wrench (T-D). Thread Pole Adapter (F) onto Bottom Pole (D). Thread Top Pole (E) into Pole Adapter (F). Tighten set screws in Pole Adapter (F) using 3mm Allen Wrench (T-A).



### STEP 4

Slide one Pole Cable Clip (G) onto Top Pole (D). Slide Arm (B) onto Top Pole (D) and tighten in place using 6mm Allen Wrench (T-D).



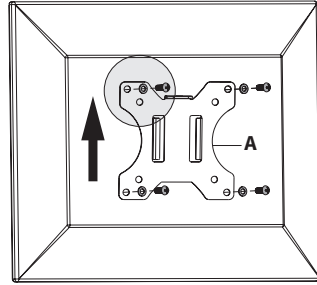
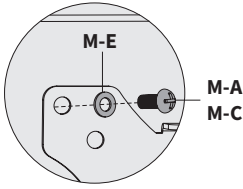
Use the 5mm Allen Wrench (T-C) to adjust joint tension.

**CAUTION:**  
Do not loosen joints once the monitors are installed to avoid the risk of monitor falling.

## STEP 5

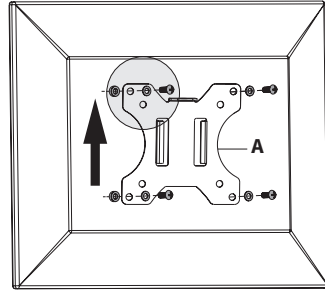
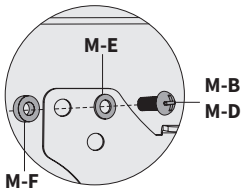
### OPTION A: Flat Back Monitor

Attach VESA Plates (**A**) to monitors using Screws (**M-A or M-C**) and M5 Washers (**M-E**).



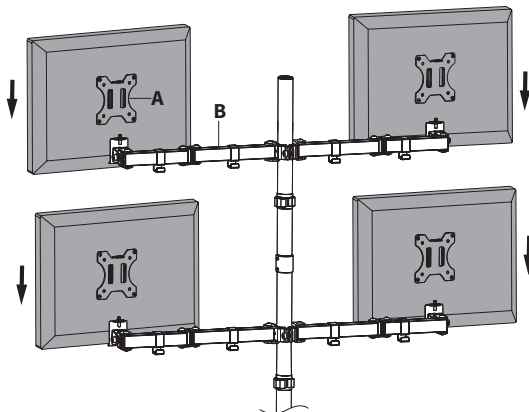
### OPTION B: Curved Back Monitor

Attach VESA Plates (**A**) to monitors using Screws (**M-B or M-D**), M5 Washers (**M-E**), and Spacers (**M-F**).



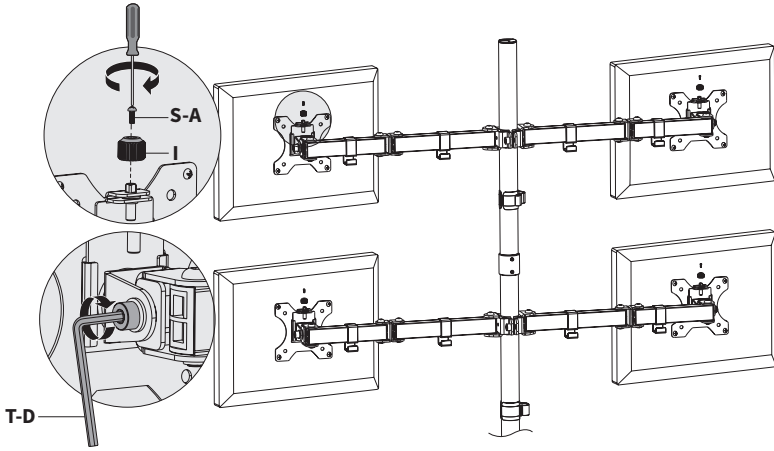
## STEP 6

Slide VESA Plates (**A**) with monitors attached onto Arms (**B**).



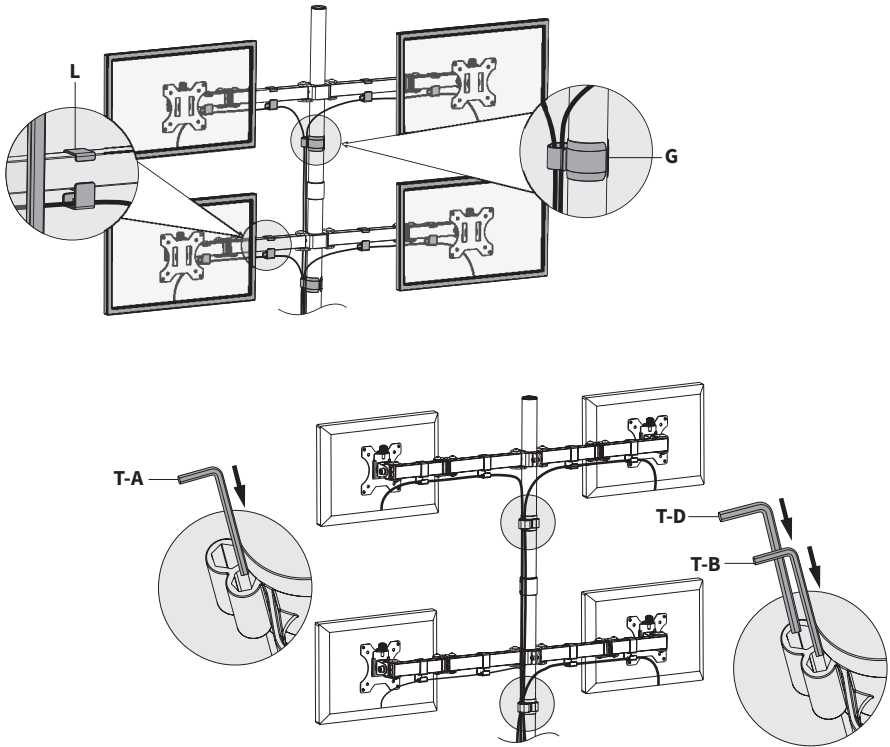
## STEP 7

Use VESA Caps (**I**) and M3x8mm Screws (**S-A**) to secure monitors using a Phillips screwdriver. Tighten with 6mm Allen Wrench (**T-D**).



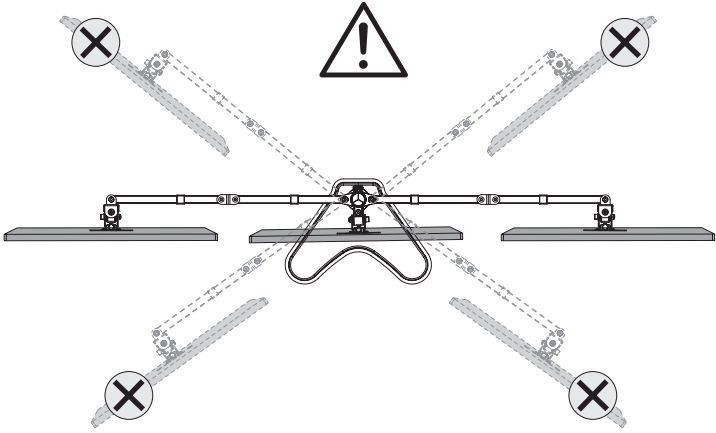
## STEP 8

Use Pole Cable Clips (**G**) and Arm Cable Clips (**L**) to manage cables. Use cable management clips (**G**) to store Allen Wrenches (**T-A**, **T-B**, **T-C**, **T-D**).



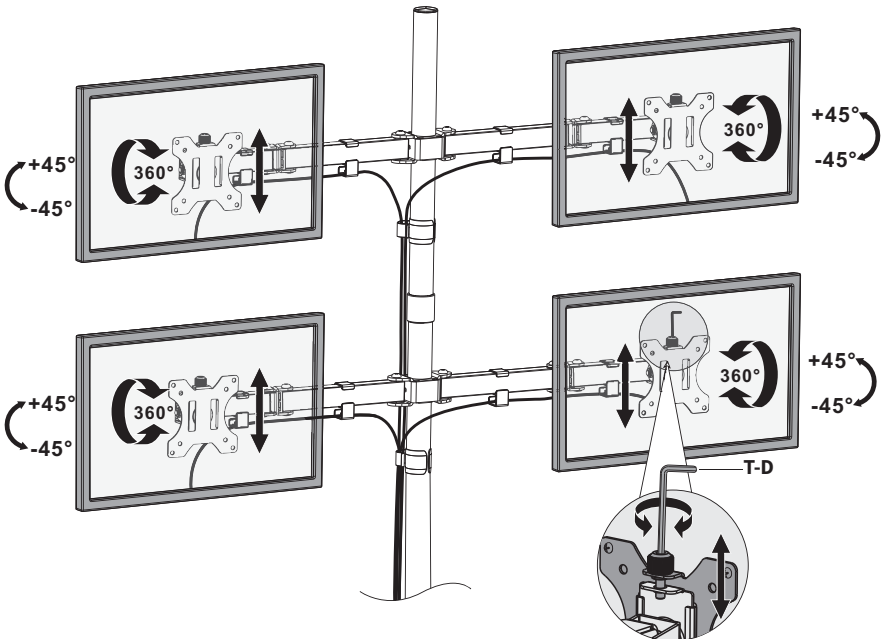
## STEP 9

Be careful not to extend the arms too far forward or backward.



## Adjust as Desired

Level the monitors using 6mm Allen Wrench (**T-D**). Adjust as desired.





Love your new VIVO setup and want to share?  
Tag us in your photo! **@vivo\_us**

LAST UPDATED: 01/05/2024  
REV1.1



Open **Monday - Friday 7:00am - 7:00pm** CST,  
our dedicated support team can offer immediate assistance with rapid response times. If any parts are received damaged or defective, please contact us. We are happy to replace parts to ensure you have a fully functioning product.



309-278-5303

**AVG. RESOLUTION TIME** (*within office hrs*): **5M 4S**



[www.vivo-us.com](http://www.vivo-us.com)  
*Chat live with an agent!*

**AVG. RESOLUTION TIME** (*within office hrs*): **< 15 M**



[help@vivo-us.com](mailto:help@vivo-us.com)

**AVG. RESPONSE TIME** (*within office hrs*): **1HR 8M**

- 23% within < 15m
- 38% within < 30m
- 61% within < 1hr
- 83% within < 2hr
- 92% within < 3hr

FOR MORE VIVO PRODUCTS, CHECK OUT OUR WEBSITE AT: [www.vivo-us.com](http://www.vivo-us.com)