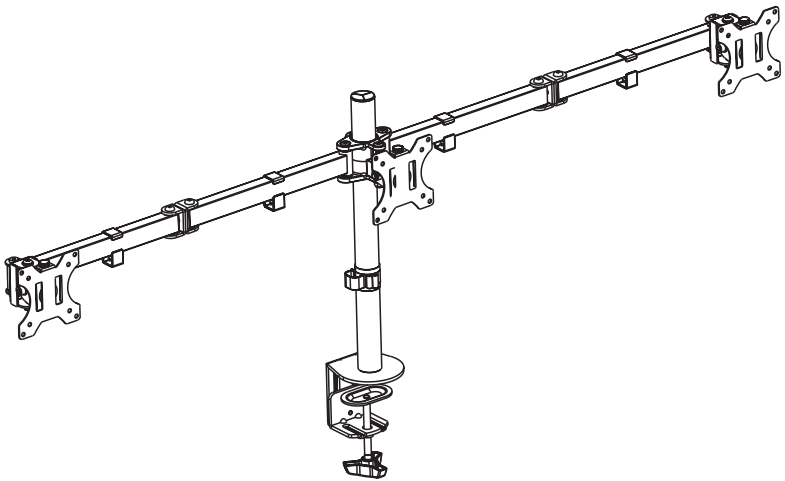


Triple Monitor Desk Mount

Instruction Manual



SKU: STAND-V003Y/W



Scan the QR code with your mobile device or follow the link for helpful videos and specifications related to this product.

<https://vivo-us.com/products/stand-v003y>

GET IN TOUCH | Monday-Friday from 7:00am-7:00pm CST



help@vivo-us.com



www.vivo-us.com
Chat live with an agent!



309-278-5303

WARNING!

If you do not understand these directions, or if you have any doubts about the safety of the installation, please call a qualified technician. Check carefully to make sure there are no missing or defective parts. Improper installation may cause damage or serious injury. Do not use this product for any purpose that is not explicitly specified in this manual. Do not exceed weight capacity. We cannot be liable for damage or injury caused by improper mounting, incorrect assembly or inappropriate use.

TIPOVER WARNING

SERIOUS OR FATAL CRUSHING INJURIES CAN OCCUR FROM TIPOVER. TO HELP PREVENT TIPOVER:

- NEVER ALLOW CHILDREN TO CLIMB, STAND, HANG, OR PLAY ON ANY PART OF MONITOR OR STAND.
- USE TIPOVER RESTRAINT OR ANCHOR STAND TO WALL

USE OF TIPOVER RESTRAINTS MAY ONLY REDUCE, BUT NOT ELIMINATE RISK OF TIPOVER.

WARNING: CHOKING HAZARD

SMALL PARTS - NOT FOR CHILDREN UNDER 3 YEARS. ADULT SUPERVISION IS REQUIRED.

PACKAGE CONTENTS



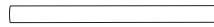
A (x3)
VESA Plate



B (x1)
Arm



C (x1)
Clamp



D (x1)
Pole



E (x1)
Cable Clip



F (x1)
Grommet Base



G (x1)
Pole Cap



H (x1)
Support Plate



I (x5)
Rubber Pad



S-A (x3)
M6x16mm Screw



S-B (x3)
Thumbscrew



M-A (x12)
M4x12mm Screw



M-B (x12)
M4x16mm Screw



M-C (x12)
M5x12mm Screw



M-D (x12)
M5x16mm Screw



M-E (x12)
M5 Washer



M-F (x12)
Spacer



T-A (x1)
4mm Allen Wrench



T-B (x1)
5mm Allen Wrench



T-C (x1)
6mm Allen Wrench

NOTE: SOME HARDWARE INCLUDED MAY NOT BE USED

TOOLS NEEDED



DO NOT EXCEED WEIGHT CAPACITY.

Failure to do so may result in serious injury.

15.4 lbs
(7 kg)

PER ARM

ASSEMBLY STEPS

STEP 1

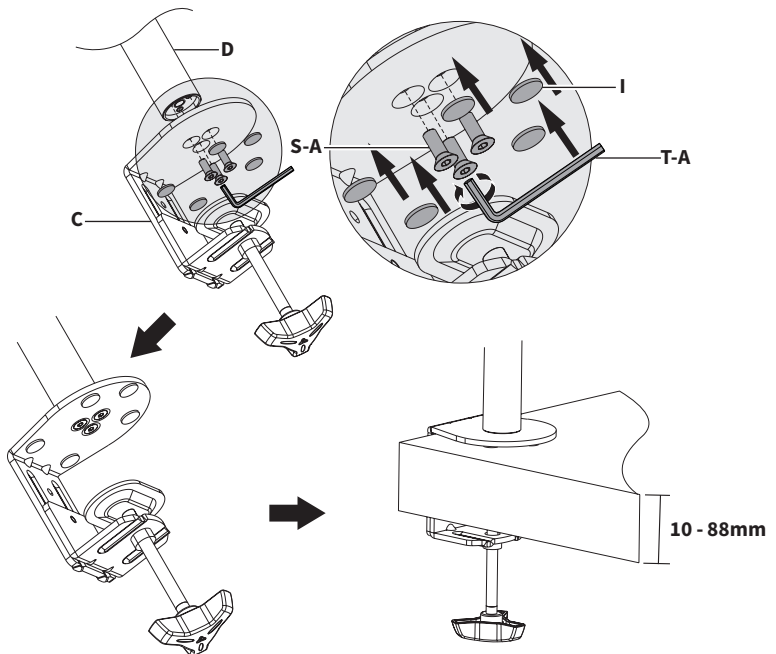
Attach Pole Cap (G) to top of Pole (D).



STEP 2 (Option A)

Clamp Installation

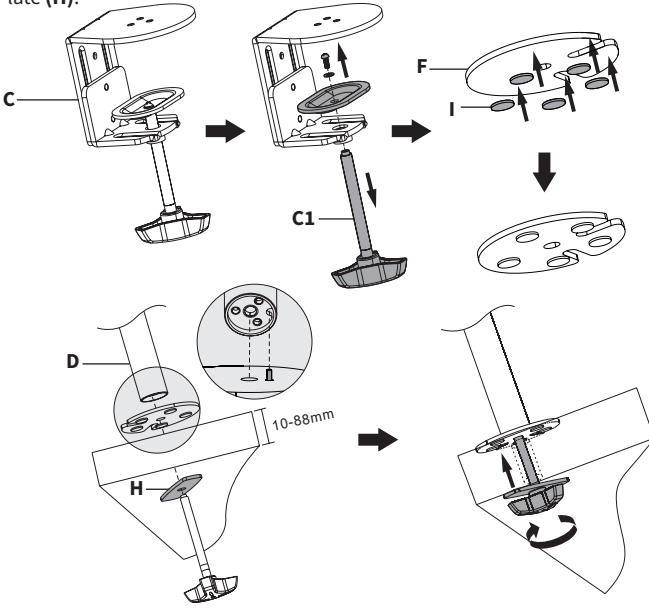
Mount Pole (D) to Clamp (C) with M6x16mm Screws (S-A) using 4mm Allen Wrench (T-A). Apply Rubber Pads (I) to bottom of Clamp (C), and secure it to the desktop.



STEP 2 (Option B)

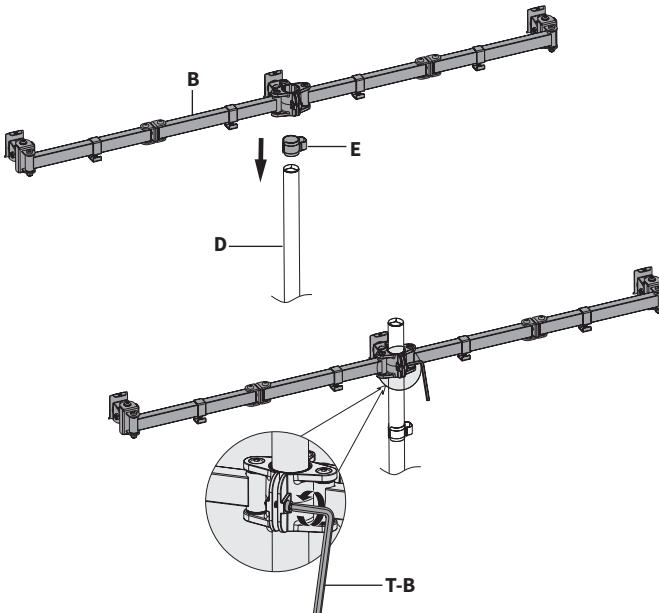
Grommet Base Installation

Remove screw from Clamp Bolt (C1), and remove Clamp Bolt (C1) from Clamp (C). Apply Rubber Pads (I) to bottom of Grommet Base (F). Align pin on top of Grommet Base (F) with the small hole on the bottom of Pole (D), position over hole in desktop, and install to desktop using Clamp Bolt (C1) and Support Plate (H).



STEP 3

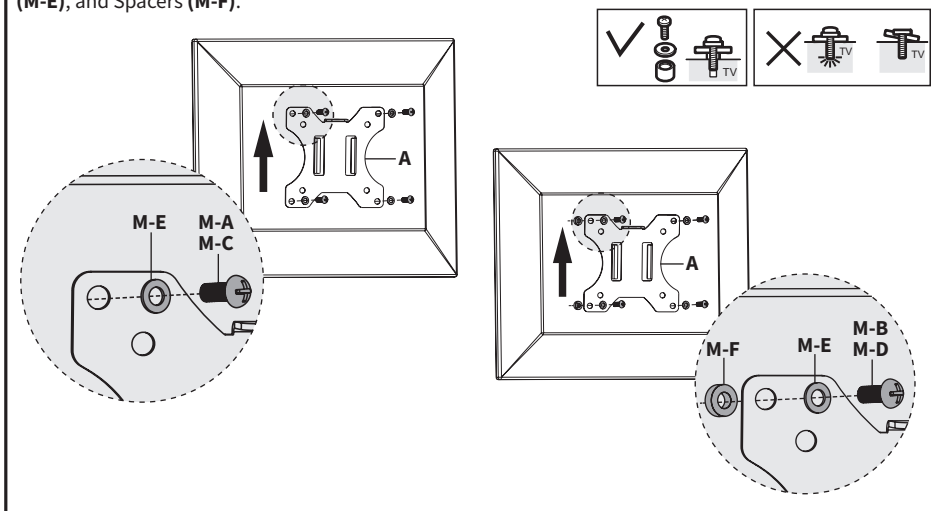
Install Arm (B) and Cable Clip (E) to Pole (D). Secure Arm (B) using 5mm Allen Wrench (T-B).



STEP 4

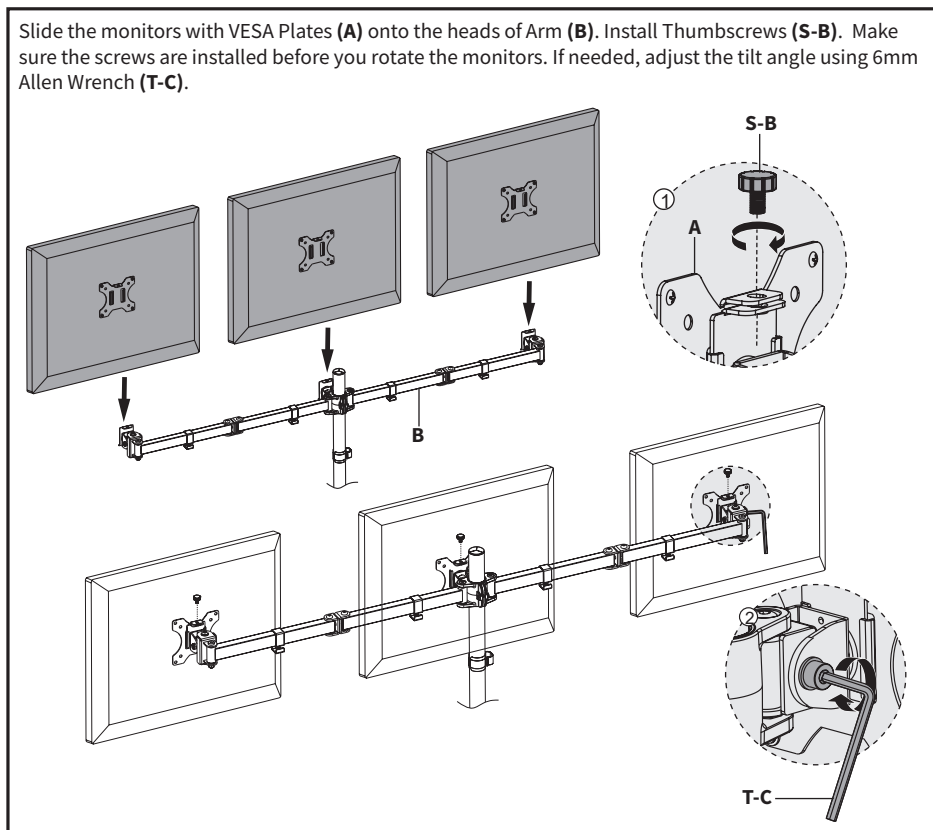
For Flat Back Monitors, install VESA Plate (A) to monitor using Screws (M-A or M-C) and M5 Washers (M-E).

For Curved Back Monitors, install VESA Plate (A) to monitor using Screws (M-B or M-D), M5 Washers (M-E), and Spacers (M-F).



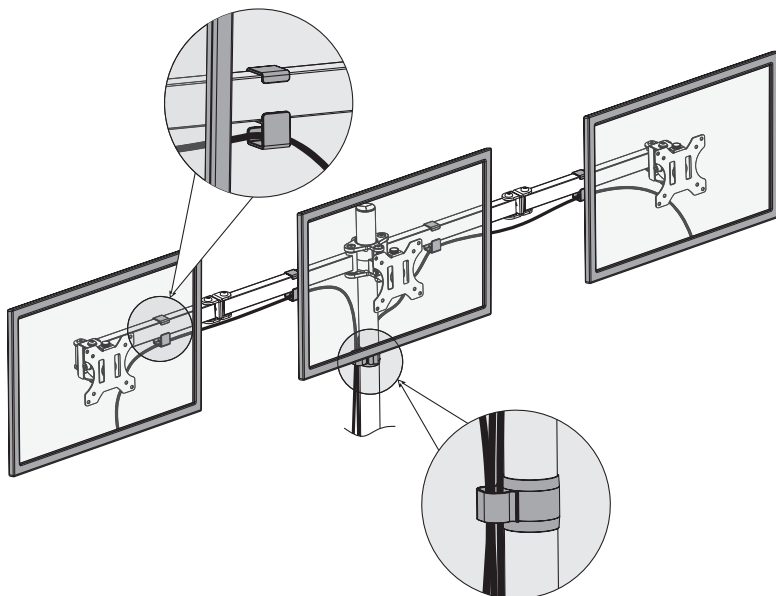
STEP 5

Slide the monitors with VESA Plates (A) onto the heads of Arm (B). Install Thumbscrews (S-B). Make sure the screws are installed before you rotate the monitors. If needed, adjust the tilt angle using 6mm Allen Wrench (T-C).



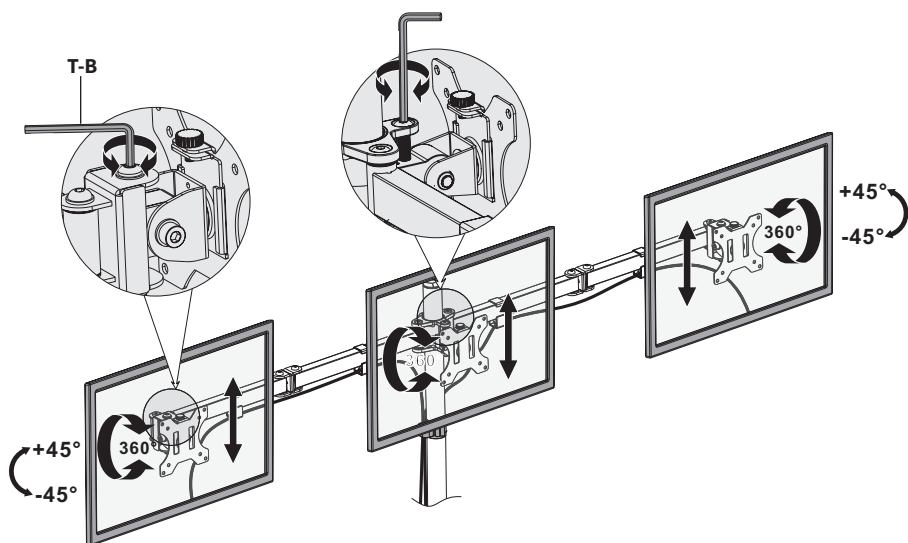
STEP 6

Manage the cables using the installed cable clips.



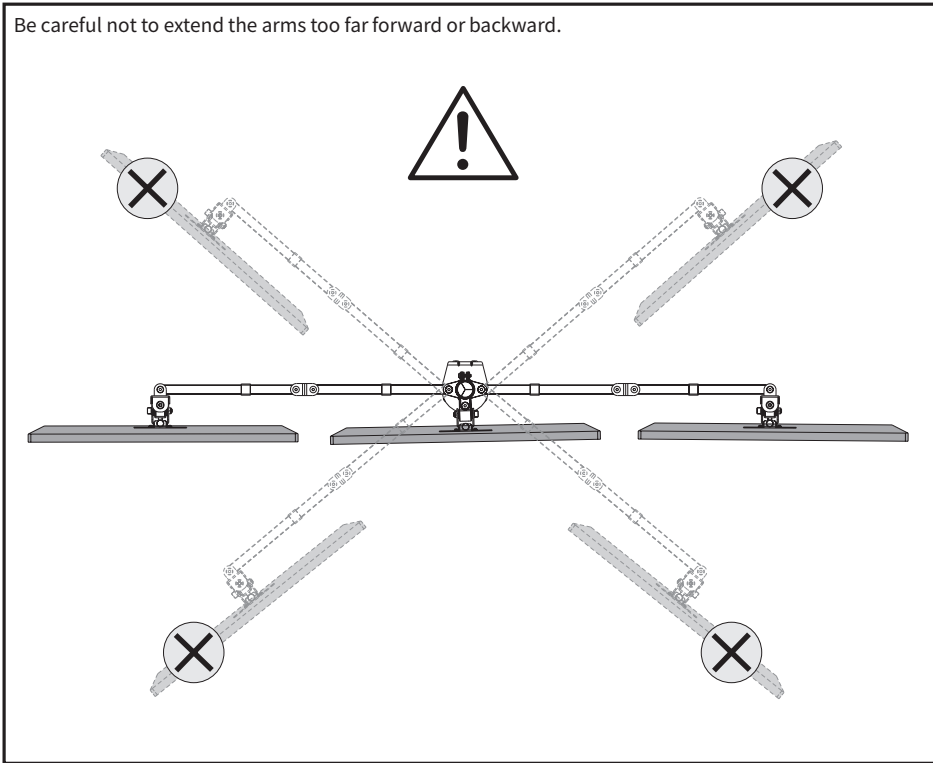
STEP 7

Adjust monitor alignment using 5mm Allen Wrench (**T-B**).



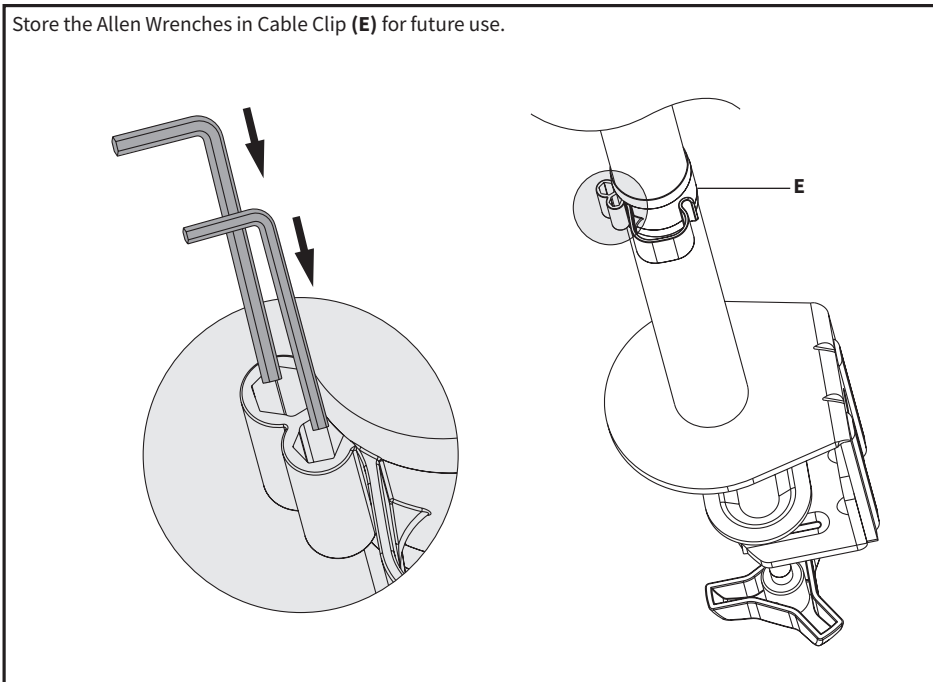
STEP 8

Be careful not to extend the arms too far forward or backward.



STEP 9

Store the Allen Wrenches in Cable Clip (E) for future use.





Open **Monday - Friday 7:00am - 7:00pm** CST,
our dedicated support team can offer immediate assistance with rapid response times. If any parts are received damaged or defective, please contact us. We are happy to replace parts to ensure you have a fully functioning product.



www.vivo-us.com
Chat live with an agent!

AVG. RESOLUTION TIME (*within office hrs*): **< 15 M**



309-278-5303

AVG. RESOLUTION TIME (*within office hrs*): **5M 4S**



help@vivo-us.com

AVG. RESPONSE TIME (*within office hrs*): **1HR 8M**

- 23% within < 15m
- 38% within < 30m
- 61% within < 1hr
- 83% within < 2hr
- 92% within < 3hr