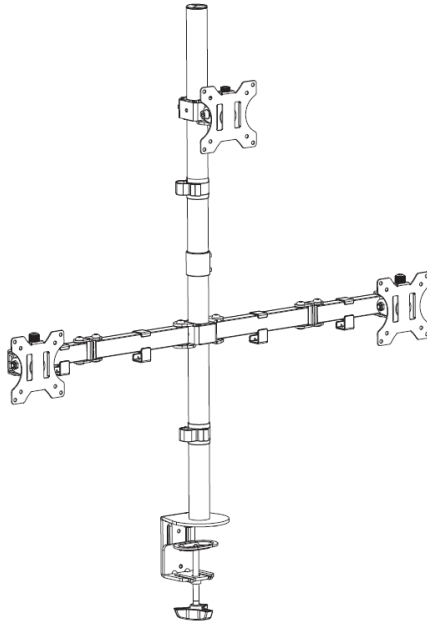




Triple Monitor Desk Mount Instruction Manual



SKU: STAND-V003T/W



Scan the QR code with your mobile device or follow the link for helpful videos and specifications related to this product.

<https://vivo-us.com/products/stand-v003t>

GET IN TOUCH | Monday-Friday from 7:00am-7:00pm CST



help@vivo-us.com



www.vivo-us.com
Chat live with an agent!



309-278-5303

! WARNING!

If you do not understand these directions, or if you have any doubts about the safety of the installation, please call a qualified technician. Check carefully to make sure there are no missing or defective parts. Improper installation may cause damage or serious injury. Do not use this product for any purpose that is not explicitly specified in this manual. Do not exceed weight capacity. We cannot be liable for damage or injury caused by improper mounting, incorrect assembly or inappropriate use.

! WARNING: CHOKING HAZARD

SMALL PARTS - NOT FOR CHILDREN UNDER 3 YEARS. ADULT SUPERVISION IS REQUIRED.

PACKAGE CONTENTS



A (x3) VESA Plate **B (x1)** VESA Bracket **C (x1)** Arm **D (x1)** Clamp **E (x1)** Bottom Pole



F (x1) Top Pole **G (x1)** Pole Connector **H (x2)** Cable Clip **I (x1)** Grommet Base **J (x2)** VESA Cap



K (x5) Rubber Pads **L (x1)** Grommet Plate



S-A (x3) M6x16mm Screw **S-B (x2)** M3x8mm Screw **S-C (x1)** Thumbscrew **M-A (x12)** M4x12mm Screw **M-B (x12)** M4x16mm Screw



M-C (x12) M5x12mm Screw **M-D (x12)** M5x16mm Screw **M-E (x12)** M5 Washer **M-F (x12)** Spacer **T-A (x1)** 3mm Allen Wrench



T-B (x1) 4mm Allen Wrench **T-C (x1)** 6mm Allen Wrench

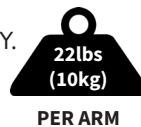
TOOLS NEEDED



NOTE: SOME HARDWARE INCLUDED MAY NOT BE USED

DO NOT EXCEED WEIGHT CAPACITY.

Failure to do so may result in serious injury.

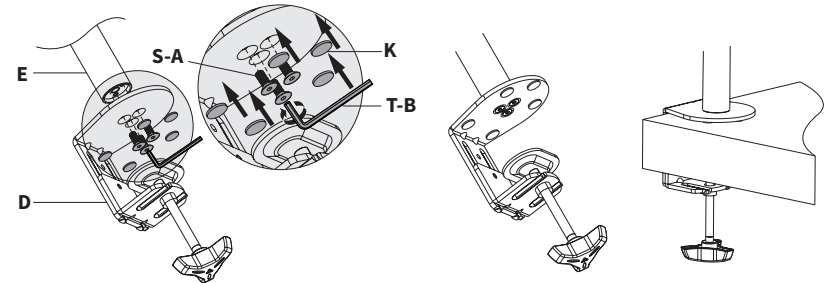


ASSEMBLY STEPS

STEP 1

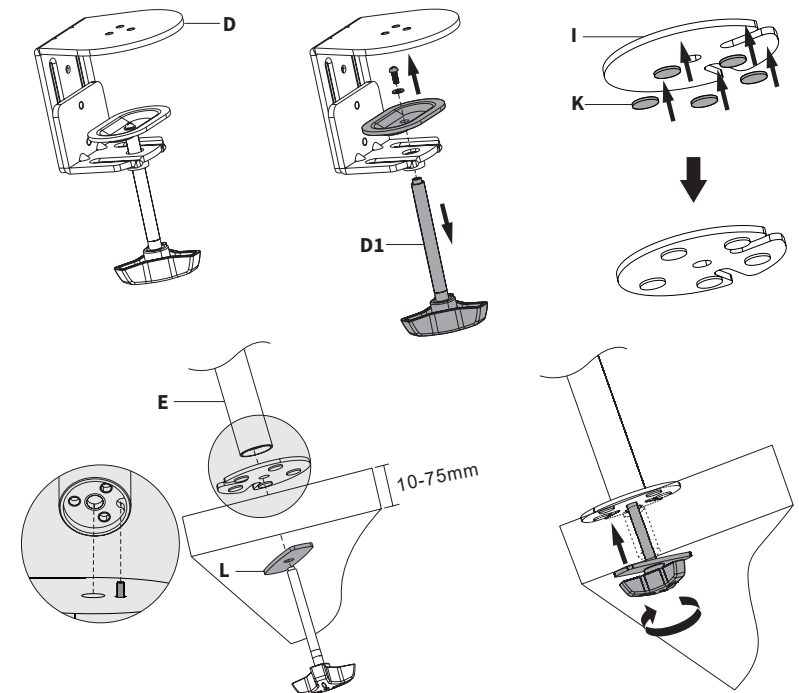
OPTION A: Clamp Installation

Remove adhesive backing from Rubber Pads (**K**) and place them on the underside of Clamp (**D**). Assemble Clamp (**D**) to Bottom Pole (**E**) using M3x16mm Screws (**S-A**) and 4mm Allen Wrench (**T-B**). Then secure Clamp (**D**) to the desktop.



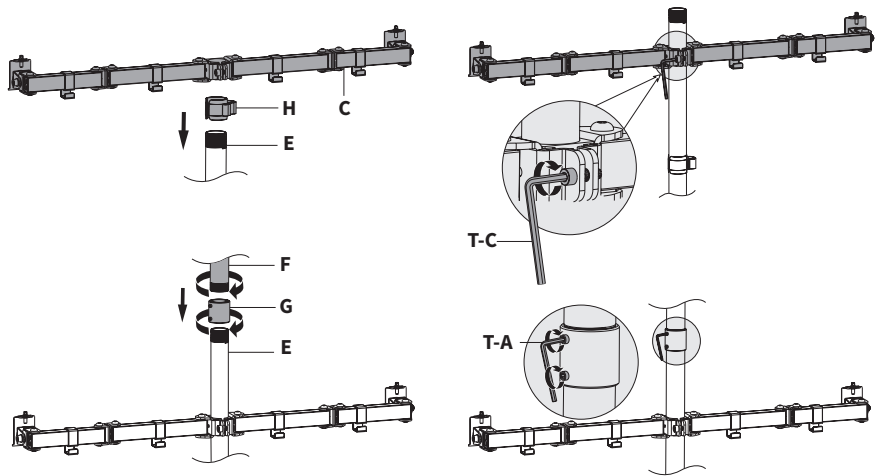
OPTION B: Grommet Base Installation

For grommet hole mounting, remove the screw in the top of Hand Bolt (**D1**) on Clamp (**D**). Stick Rubber Pads (**K**) to bottom of Grommet Base (**I**). Attach Grommet Plate (**L**) to Hand Bolt (**D1**) and run through grommet hole into Grommet Base (**I**) and thread into Pole (**E**).



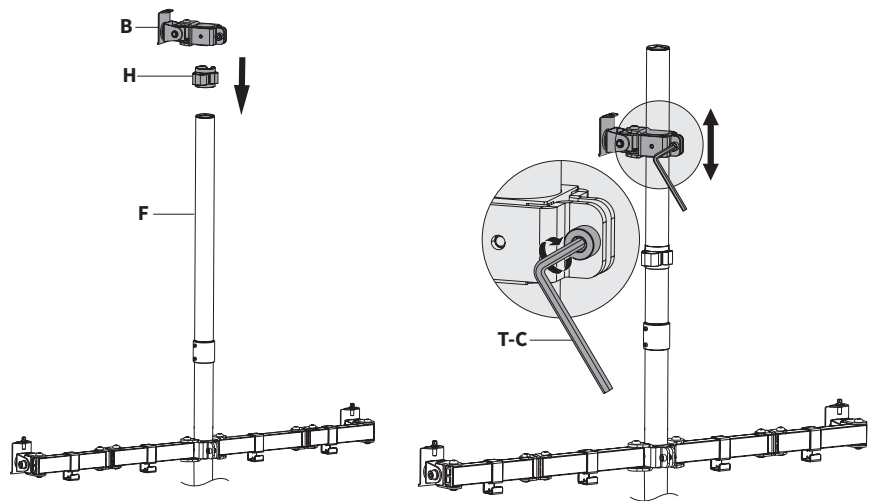
STEP 2

Slide Cable Clip (**H**) and Arm (**C**) onto Bottom Pole (**E**). Secure Arm (**C**) in place using 6mm Allen Wrench (**T-C**). Screw Pole Connector (**G**) onto Bottom Pole (**E**), then screw Top Pole (**F**) into Pole Connector (**G**). Tighten the set screws in Pole Connector (**G**) using 3mm Allen Wrench (**T-A**).



STEP 3

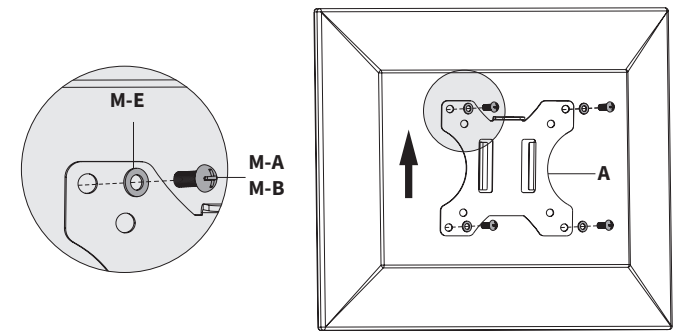
Slide Cable Clip (**H**) and VESA Bracket (**B**) onto Top Pole (**F**). Secure VESA Bracket (**B**) in place using 6mm Allen Wrench (**T-C**).



STEP 4

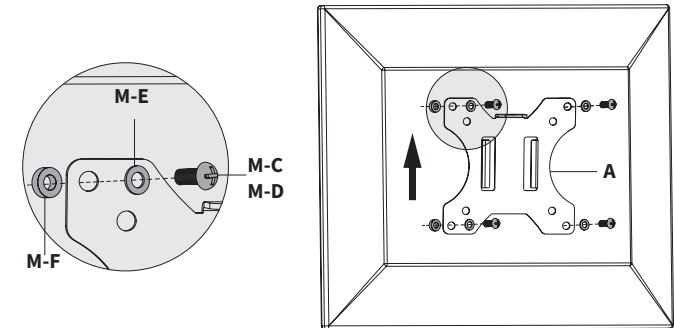
OPTION A: Flat Back Monitor

Assemble VESA Plates (**A**) to back of monitors using Screw (**M-A or M-B**) and M5 Washers (**M-E**).



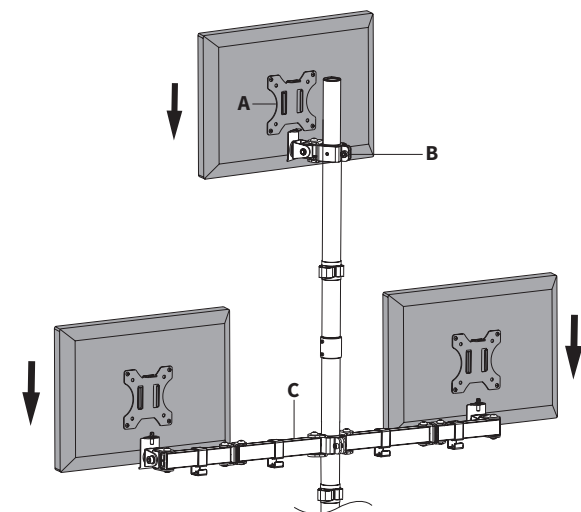
OPTION B: Curved Back Monitor

Assemble VESA Plates (**A**) to back of monitors using Screws (**M-C or M-D**) and M5 Washers (**M-E**). If screws are too long, Spacers (**M-F**) may be required.



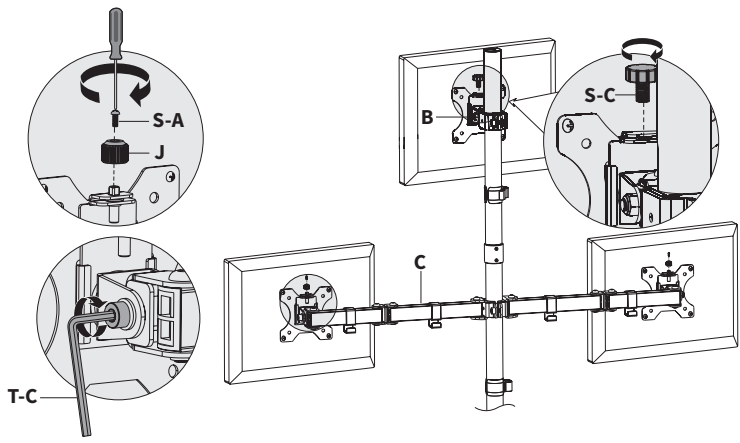
STEP 5

Slide VESA Plates (**A**) with monitors onto VESA Bracket (**B**) or Arm (**C**).



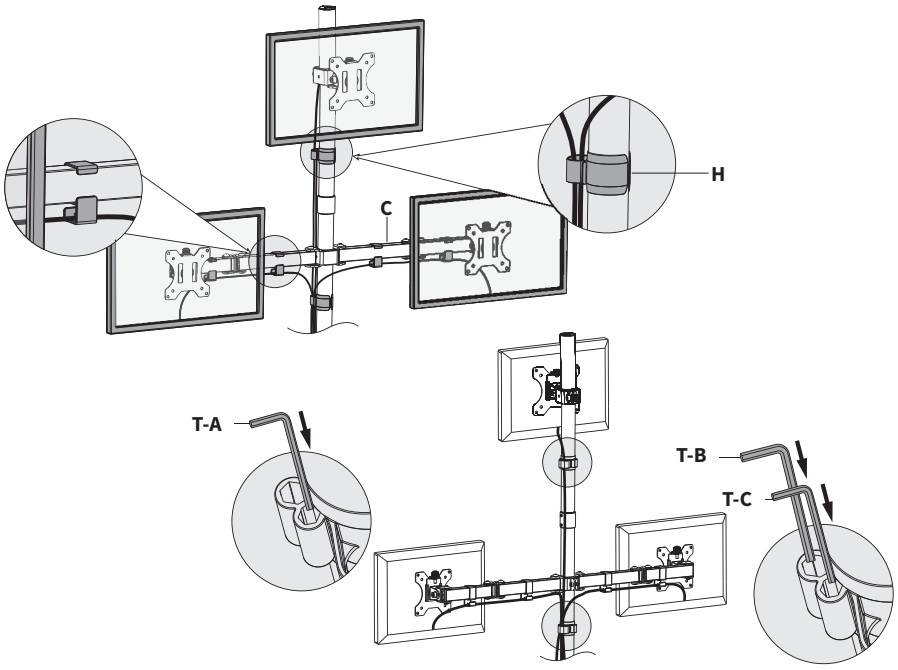
STEP 6

Secure bottom two monitors to Arm (C) using VESA Caps (J) and M3x8mm Screws (S-A). Tighten with a Phillips screwdriver. Secure top monitor to VESA Bracket (B) using Thumbscrew (S-C). Use 6mm Allen Wrench (T-C) to adjust the tilt.



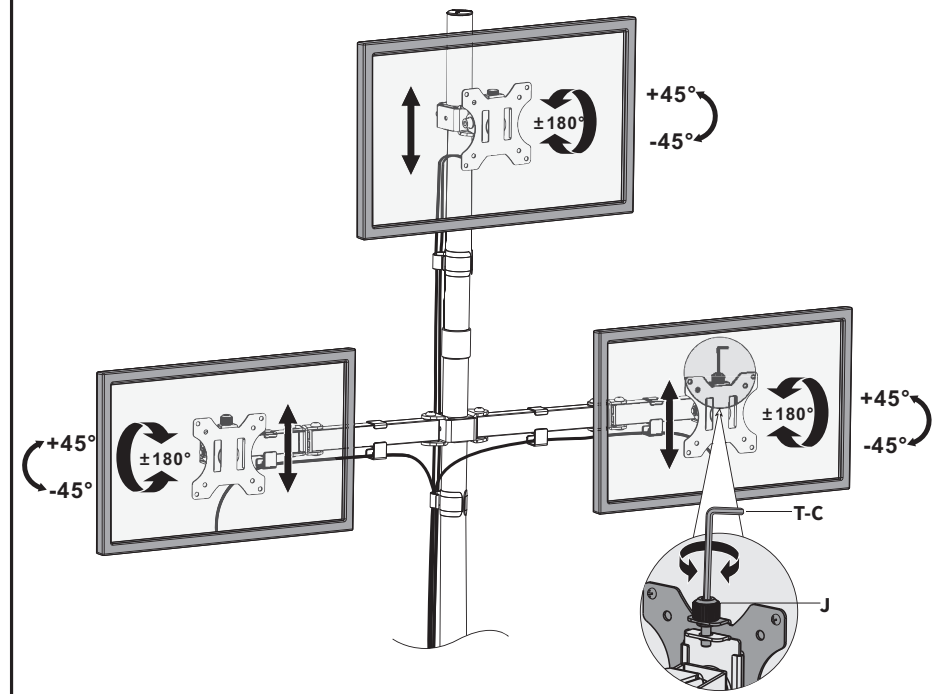
STEP 7

Manage cables using the cable management clips in Arm (C) and Cable Clips (H). Store Allen Wrenches (T-A, T-B, T-C) in Cable Clip (H) for future adjustments.



STEP 8

Level bottom monitors by turning VESA Caps (J) using 6mm Allen Wrench (T-C). Adjust monitors as desired.





Open **Monday - Friday 7:00am - 7:00pm** CST,
our dedicated support team can offer immediate assistance with rapid response times. If any parts are received damaged or defective, please contact us. We are happy to replace parts to ensure you have a fully functioning product.



309-278-5303

AVG. RESOLUTION TIME (*within office hrs*): **5M 4S**



www.vivo-us.com
Chat live with an agent!

AVG. RESOLUTION TIME (*within office hrs*): **< 15 M**



help@vivo-us.com

AVG. RESPONSE TIME (*within office hrs*): **1HR 8M**

- 23% within < 15m
- 38% within < 30m
- 61% within < 1hr
- 83% within < 2hr
- 92% within < 3hr