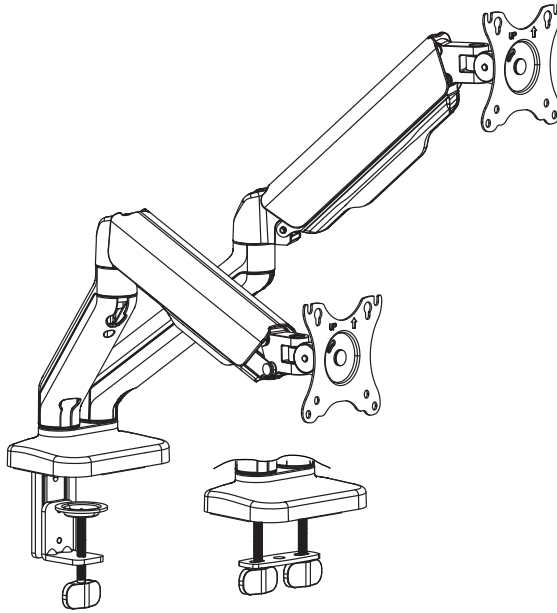




Mechanical Arm Dual Monitor Desk Mount Instruction Manual



SKU: STAND-V0020



Scan the QR code with your mobile device or follow the link for helpful videos and specifications related to this product.

<https://vivo-us.com/products/stand-v0020>

GET IN TOUCH | Monday-Friday from 7:00am-7:00pm CST



help@vivo-us.com



www.vivo-us.com
Chat live with an agent!



309-278-5303

WARNING!

If you do not understand these directions, or if you have any doubts about the safety of the installation, please call a qualified technician. Check carefully to make sure there are no missing or defective parts. Improper installation may cause damage or serious injury. Do not use this product for any purpose that is not explicitly specified in this manual. Do not exceed weight capacity. We cannot be liable for damage or injury caused by improper mounting, incorrect assembly or inappropriate use.

TIPOVER WARNING

SERIOUS OR FATAL CRUSHING INJURIES CAN OCCUR FROM TIPOVER. TO HELP PREVENT TIPOVER:

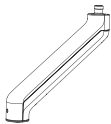
- NEVER ALLOW CHILDREN TO CLIMB, STAND, HANG, OR PLAY ON ANY PART OF MONITOR OR STAND.
- USE TIPOVER RESTRAINT OR ANCHOR STAND TO WALL

USE OF TIPOVER RESTRAINTS MAY ONLY REDUCE, BUT NOT ELIMINATE RISK OF TIPOVER.

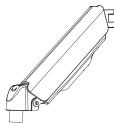
WARNING: CHOKING HAZARD

SMALL PARTS - NOT FOR CHILDREN UNDER 3 YEARS. ADULT SUPERVISION IS REQUIRED.

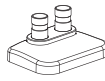
PACKAGE CONTENTS



A (x2)
Lower Arm



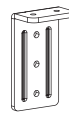
B (x2)
Upper Arm



C (x1)
Base



D (x2)
VESAs Plate



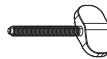
E (x1)
Upper Clamp



F (x1)
Lower Clamp



G (x1)
Grommet Plate



H (x1)
Knob



S-A (x2)
M6x8mm Screw



S-B (x2)
M6x10mm Screw



S-C (x2)
M8x30mm Screw



M-A (x8)
M4x12mm Screw



M-B (x8)
M5x12mm Screw



M-C (x8)
M5 Washer



T-A (x1)
4mm Allen Wrench



T-B (x1)
5mm Allen Wrench

NOTE: SOME HARDWARE INCLUDED MAY NOT BE USED

DO NOT EXCEED WEIGHT CAPACITY.

Failure to do so may result in serious injury.



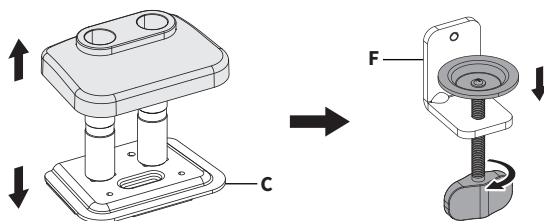
PER ARM

ASSEMBLY STEPS

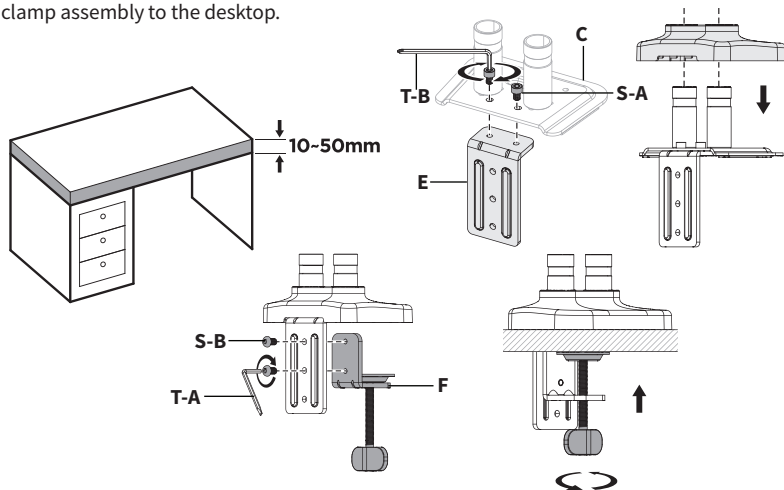
STEP 1 (Option A)

Clamp Installation

Remove plastic shroud from Base (C). Adjust the knob completely down on Lower Clamp (F).

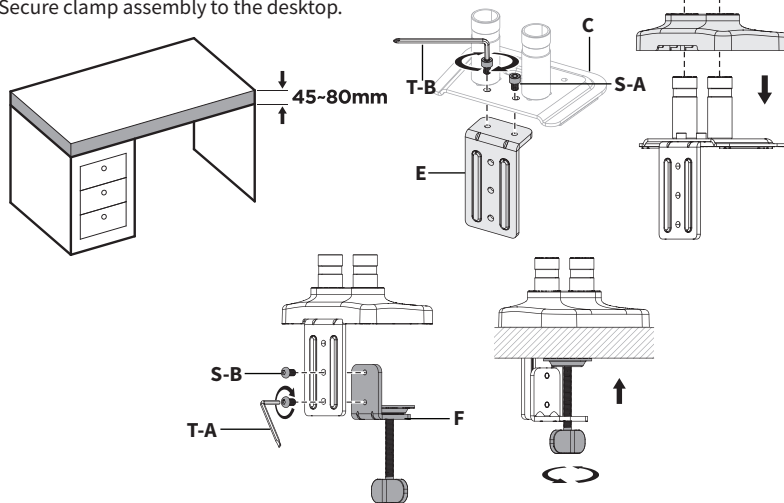


For 0.4"-1.90" (10-50mm) desktops install Upper Clamp (E) to Base (C) using M6x8mm Screws (S-A) and 5mm Allen Wrench (T-B). Reinstall the plastic shroud onto Base (C). Attach Lower Clamp (F) to the top two holes on Upper Clamp (E) using M6x10mm Screws (S-B) and 4mm Allen Wrench (T-A). Secure clamp assembly to the desktop.



OR

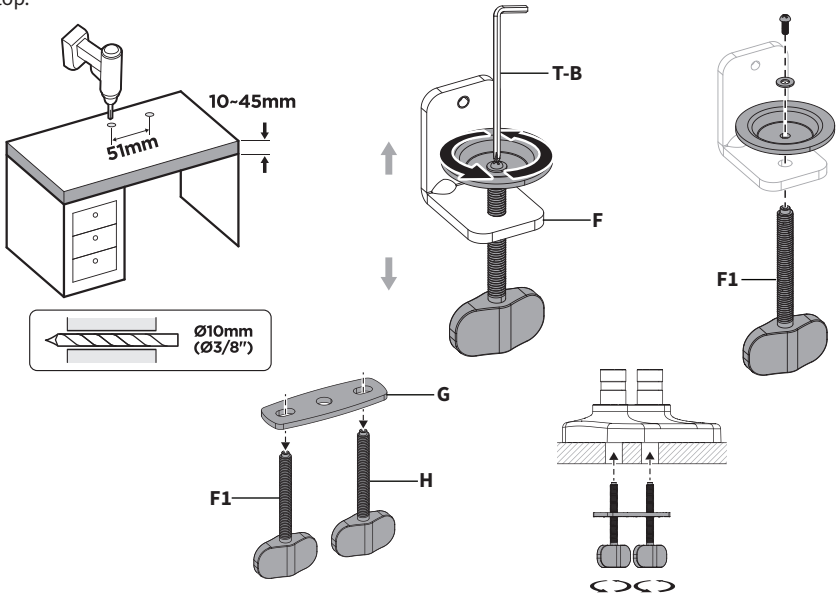
For 1.8"-3.1" (45-80mm) desktops install Upper Clamp (E) to Base (C) using M6x8mm Screws (S-A) and 5mm Allen Wrench (T-B). Reinstall the plastic shroud onto Base (C). Attach Lower Clamp (F) to the bottom two holes on Upper Clamp (E) using M6x10mm Screws (S-B) and 4mm Allen Wrench (T-A). Secure clamp assembly to the desktop.



STEP 1 (Option B)

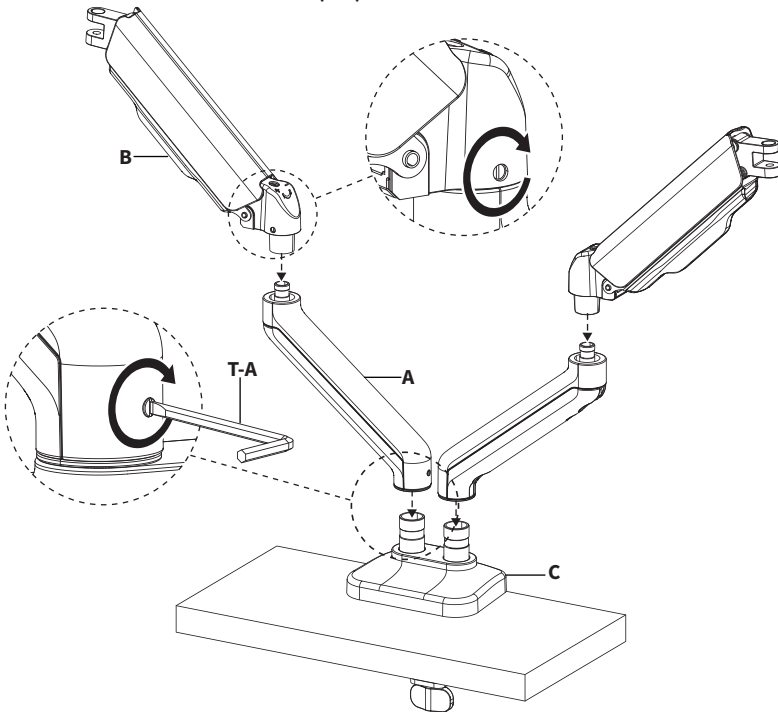
Grommet Installation

Mark two drilling locations 2" (51mm) apart in desired location. Drill grommet holes using a $\frac{3}{8}$ " (10mm) drill bit drilling completely through the desktop. Disassemble Lower Clamp (F) using the Phillips end on 5mm Allen Wrench (T-B). Place Grommet Plate (G) on Knobs (F1,H) and secure assembly to the desktop.



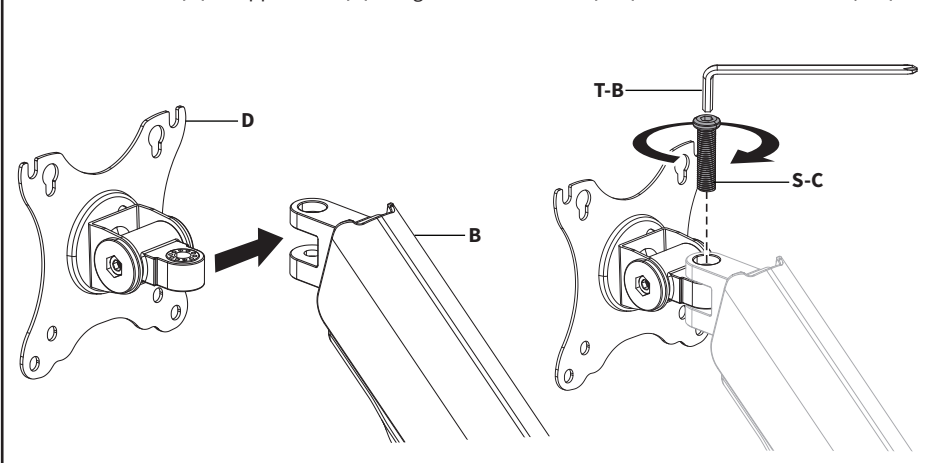
STEP 2

Place Lower Arms (A) onto Base (C) and Upper Arms (B) onto Lower Arms (A). Tighten set screws using the flathead end on 4mm Allen Wrench (T-A).



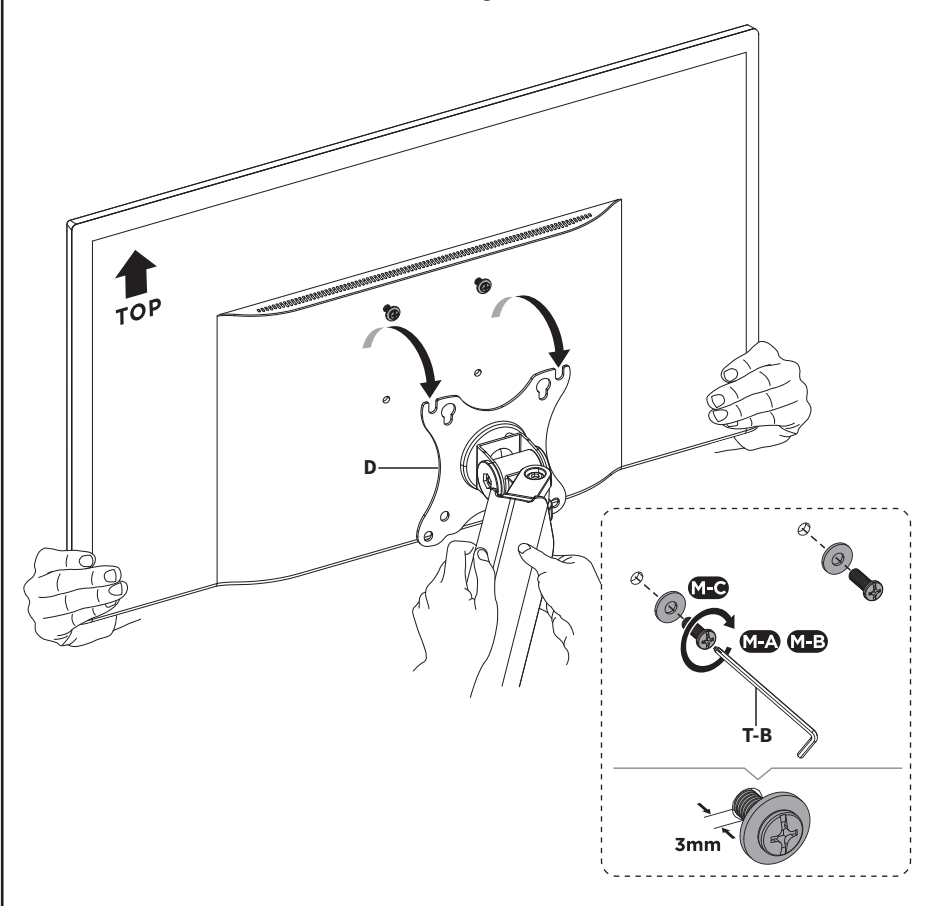
STEP 3

Attach VESA Plates (**D**) to Upper Arms (**B**) using M8x30mm Screws (**S-C**) and 5mm Allen Wrench (**T-B**).



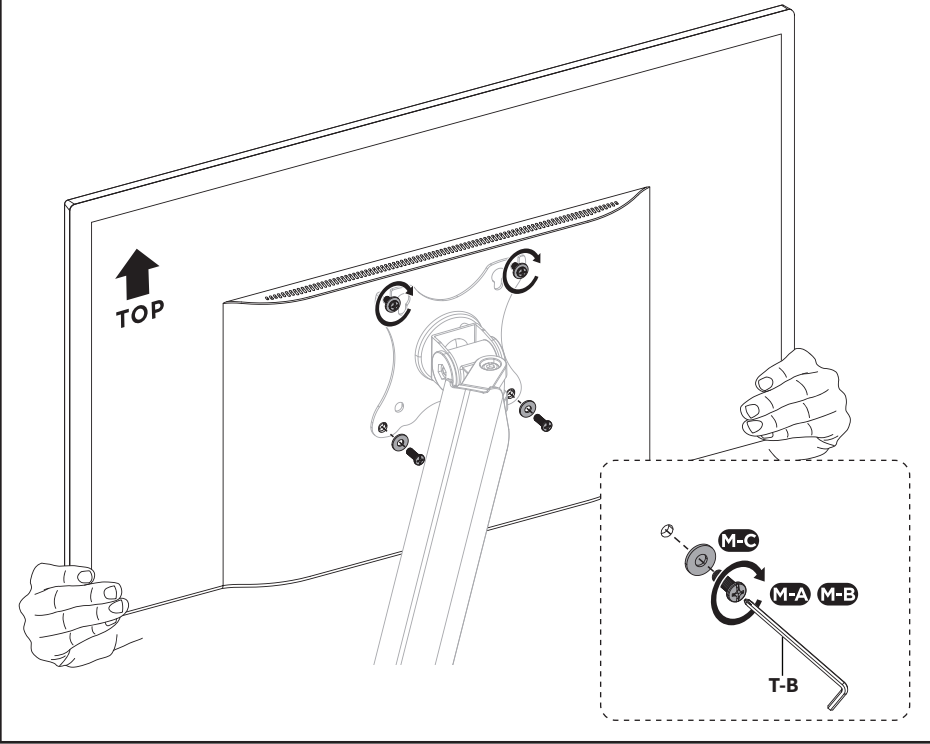
STEP 4

Install two Screws (**M-A or M-B**) and M5 Washers (**M-C**) using the Phillips end on 5mm Allen Wrench (**T-B**) to the top VESA holes on the monitor leaving at least 3mm of clearance between the screw and monitor. Slide the monitor onto VESA Plate (**D**) making sure the screws sit within the slots.

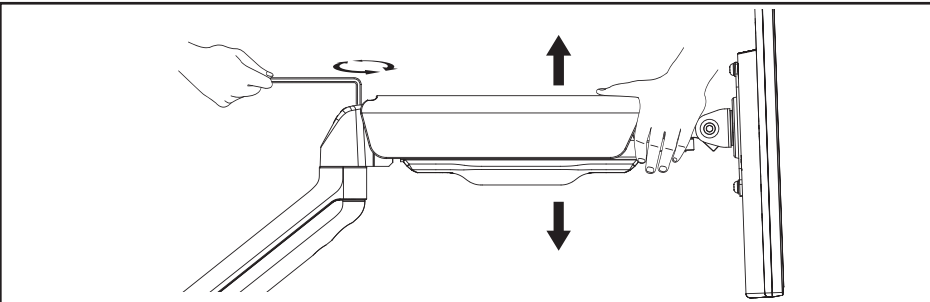


STEP 5

Tighten the top two screws and install the remaining Screws (M-A or M-B) and 5mm Washers (M-C) using the Phillips end on 5mm Allen Wrench (T-B).

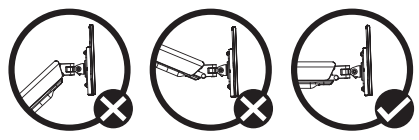


STEP 6



To properly balance the arm with monitors mounted, adjust the spring tension using the supplied Allen Key as follows:

First, position and firmly hold the arm horizontally as shown. Ask for assistance should you require it.



CAUTION: To avoid damage to monitors or mount, always keep the arm in a horizontal position while making adjustments. Again, ask for assistance if required.



If the arm **drops**, turn the adjustment screw clockwise until it stays in a horizontal position.

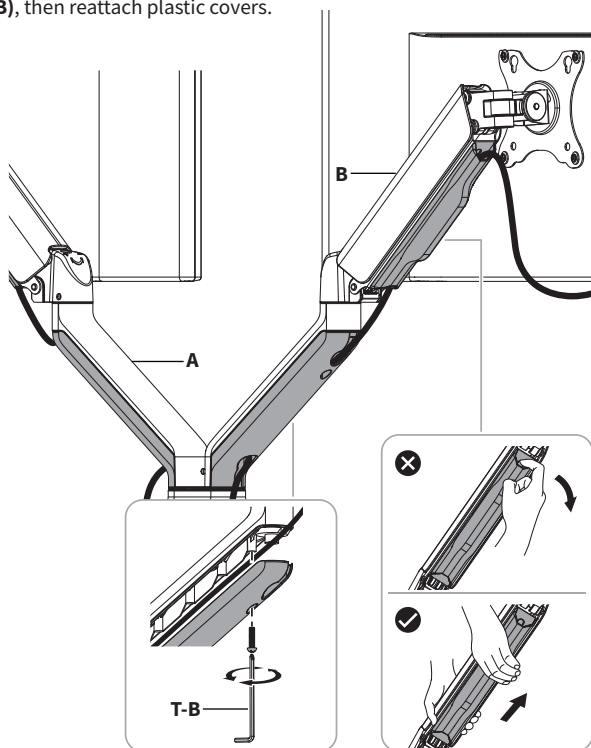


If the arm **rises**, turn the adjustment screw counter-clockwise until it stays in a horizontal position.

CAUTION: Do not over tighten the screws.

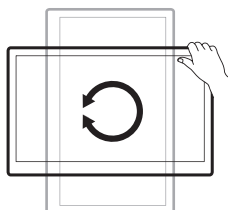
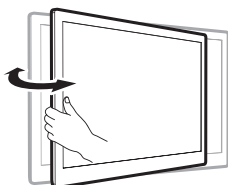
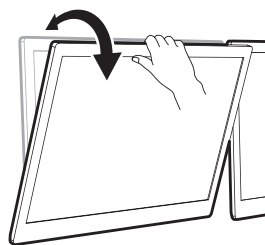
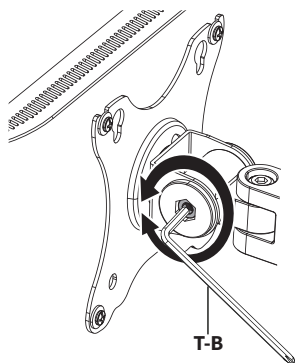
STEP 7

Remove bottom plastic covers from Lower Arm (A) using the Phillips end of 5mm Allen Wrench (T-B). Slide plastic covers off of Upper Arms (B). Run cables from monitors through bottom of Upper Arms (A) and Lower Arms (B), then reattach plastic covers.



STEP 5

Adjust monitor tilt support using 5mm Allen Wrench (T-B) as shown. Adjust monitor position as desired.





Love your new VIVO setup and want to share?
Tag us in your photo! **@vivo_us**

LAST UPDATED: 09/15/2023
REV3



Open **Monday - Friday 7:00am - 7:00pm** CST,
our dedicated support team can offer immediate assistance with rapid response times. If any parts are received damaged or defective, please contact us. We are happy to replace parts to ensure you have a fully functioning product.



www.vivo-us.com
Chat live with an agent!

AVG. RESOLUTION TIME (*within office hrs*): **< 15 M**



309-278-5303

AVG. RESOLUTION TIME (*within office hrs*): **5M 4S**



help@vivo-us.com

AVG. RESPONSE TIME (*within office hrs*): **1HR 8M**

- 23% within < 15m
- 38% within < 30m
- 61% within < 1hr
- 83% within < 2hr
- 92% within < 3hr