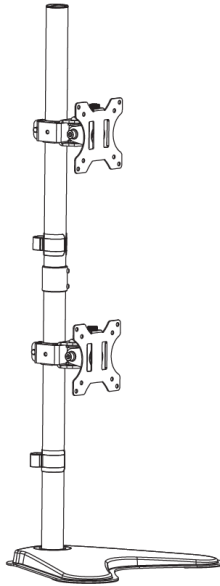




Dual Monitor Desk Stand

Instruction Manual



SKU: STAND-V002L



Scan the QR code with your mobile device or follow the link for helpful videos and specifications related to this product.

<https://vivo-us.com/products/stand-v002l>

GET IN TOUCH | Monday-Friday from 7:00am-7:00pm CST



help@vivo-us.com



www.vivo-us.com
Chat live with an agent!



309-278-5303

WARNING!

If you do not understand these directions, or if you have any doubts about the safety of the installation, please call a qualified technician. Check carefully to make sure there are no missing or defective parts. Improper installation may cause damage or serious injury. Do not use this product for any purpose that is not explicitly specified in this manual. Do not exceed weight capacity. We cannot be liable for damage or injury caused by improper mounting, incorrect assembly or inappropriate use.

TIPOVER WARNING

SERIOUS OR FATAL CRUSHING INJURIES CAN OCCUR FROM TIPOVER. TO HELP PREVENT TIPOVER:

- NEVER ALLOW CHILDREN TO CLIMB, STAND, HANG, OR PLAY ON ANY PART OF MONITOR OR STAND.
- USE TIPOVER RESTRAINT OR ANCHOR STAND TO WALL

USE OF TIPOVER RESTRAINTS MAY ONLY REDUCE, BUT NOT ELIMINATE RISK OF TIPOVER.

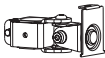
WARNING: CHOKING HAZARD

SMALL PARTS - NOT FOR CHILDREN UNDER 3 YEARS. ADULT SUPERVISION IS REQUIRED.

PACKAGE CONTENTS



A (x2)
VESA Plate



B (x2)
VESA Bracket



C (x1)
Base



D (x1)
Pole



E (x1)
Pole



F (x1)
Pole Cap



G (x1)
Pole Connector



H (x2)
Cable Clip



I (x2)
Fastener



J (x3)
Bolt



K (x1)
3mm Allen
Wrench



L (x1)
4mm Allen
Wrench



M (x1)
6mm Allen
Wrench



M-A (x8)
M4x12



M-B (x8)
M4x16



M-C (x8)
M5x12



M-D (x8)
M5x16



M-E (x8)
D5 Washer



M-F (x8)
Spacer

NOTE: SOME HARDWARE INCLUDED MAY NOT BE USED

TOOLS NEEDED



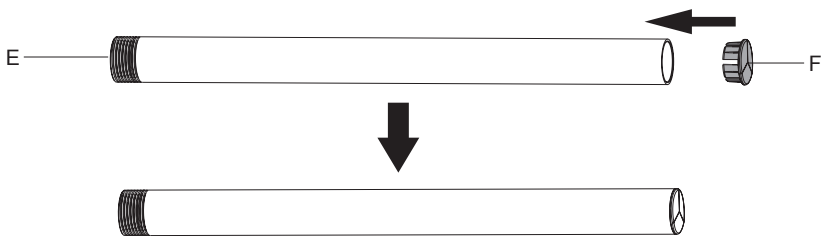
DO NOT EXCEED WEIGHT CAPACITY.
Failure to do so may result in serious injury.

22 lbs
Per Arm
(10 kg)

ASSEMBLY STEPS

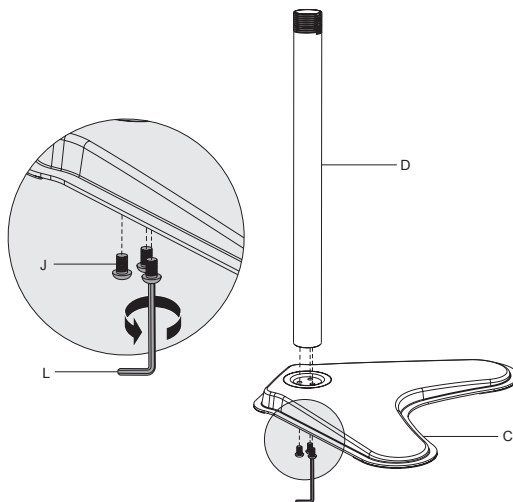
STEP 1

Insert pole cap (F).



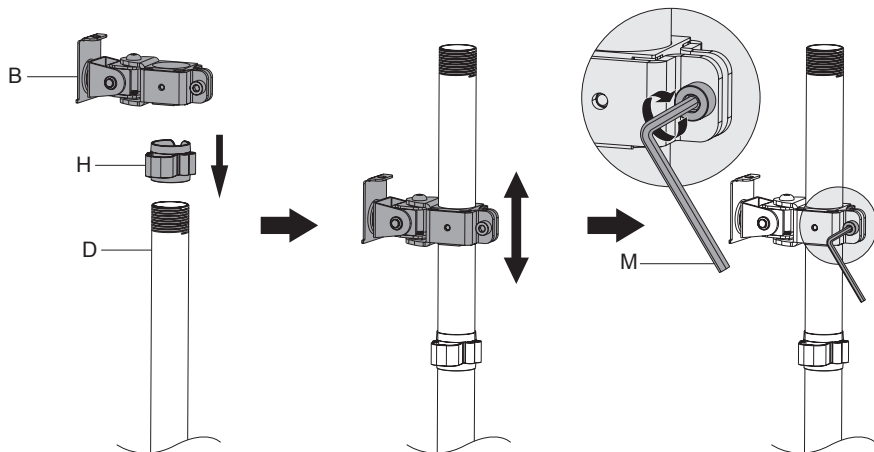
STEP 2

Use allen wrench (L) on bolt (J) to secure the bottom pole (D) to the base (C).



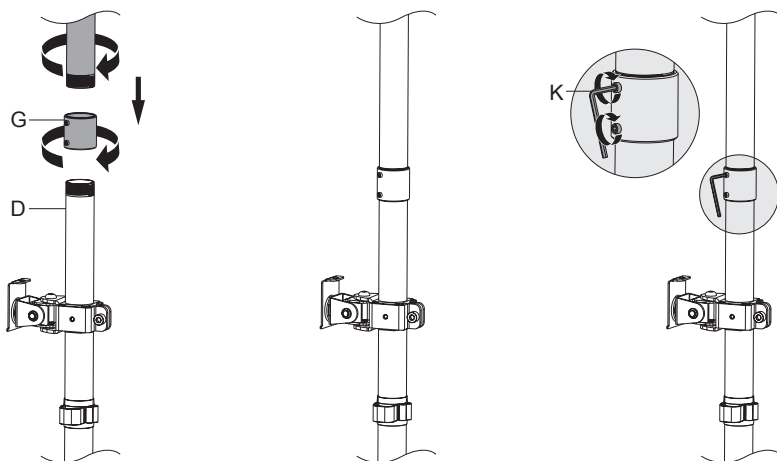
STEP 3

Slide the cable management clip (**H**) down the pole followed by a single clamp (**B**). Choose your desired height and secure the clamp to the pole with allen wrench (**M**).



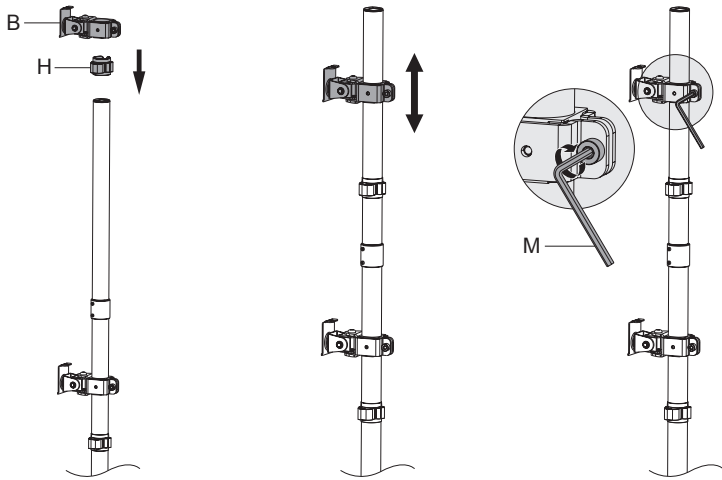
STEP 4

Screw the pole connector (**G**) to the threads on top of pole (**D**) then add pole (**E**). Use allen wrench (**K**) to tighten down the two screws inside the pole connector.



STEP 5

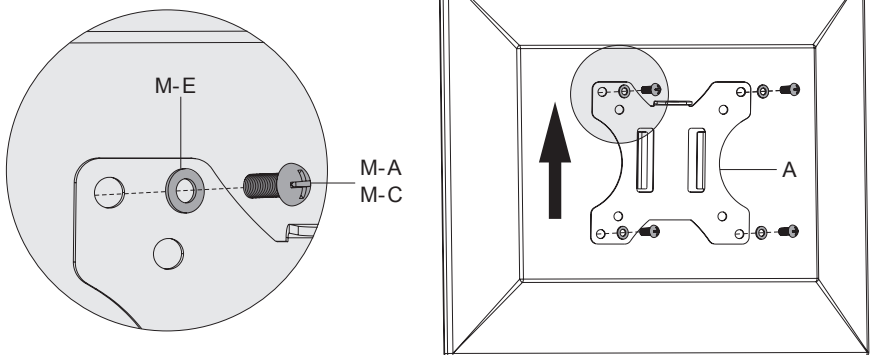
Add the second cable management clip (**H**) and single clamp (**B**) to desired height and secure to the pole with allen wrench (**M**).



STEP 6

OPTION A: Flat Back Monitor

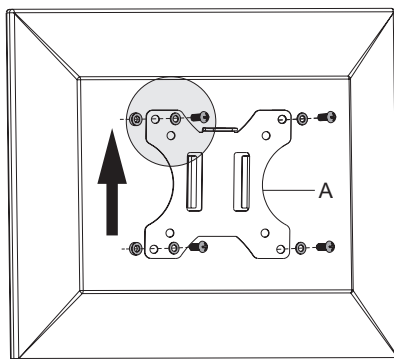
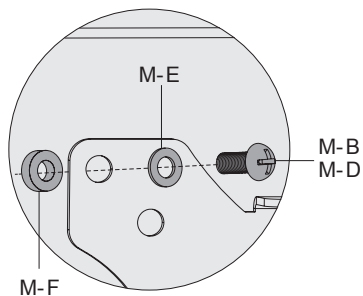
Secure VESA plate (**A**) to the back of your monitor. Layer VESA plate on top of washer (**M-E**), then insert correct size bolt to fit the holes in your monitor.



STEP 6 (Continued)

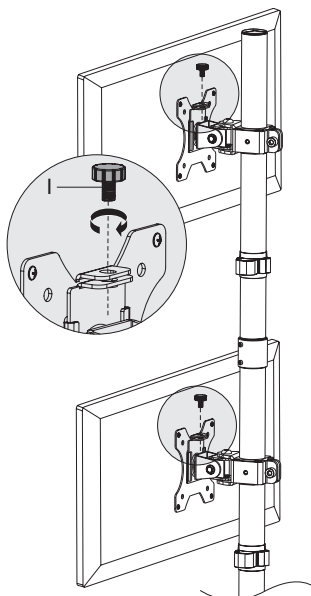
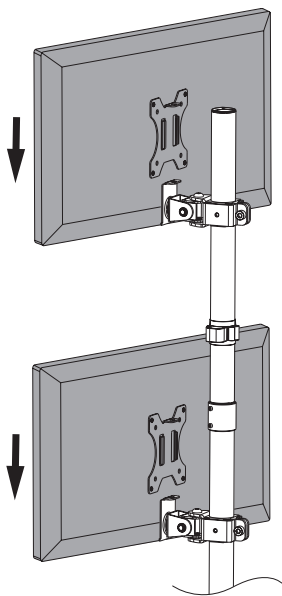
OPTION B: Curved Back Monitor

Secure VESA plate (**A**) to the back of your monitor. Layer spacers (**M-F**), VESA plate, washers (**M-E**), then insert correct size bolt to fit the holes in your monitor.



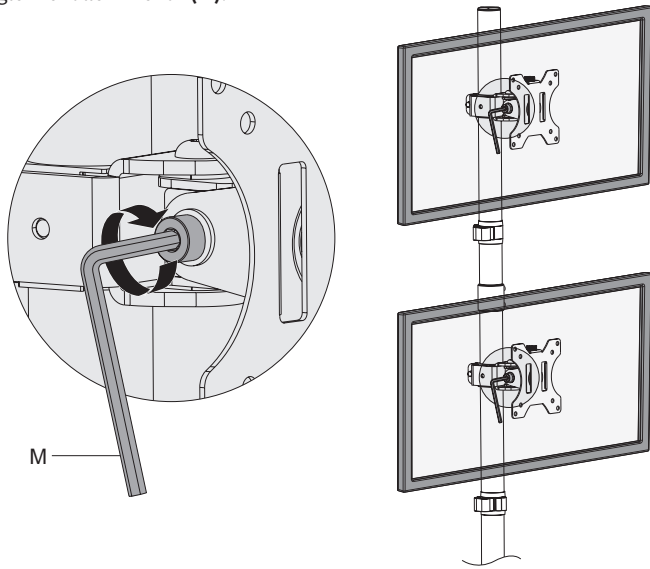
STEP 7

Slide the monitors onto (**B**) clamps. Use fasteners (**I**) to secure them.



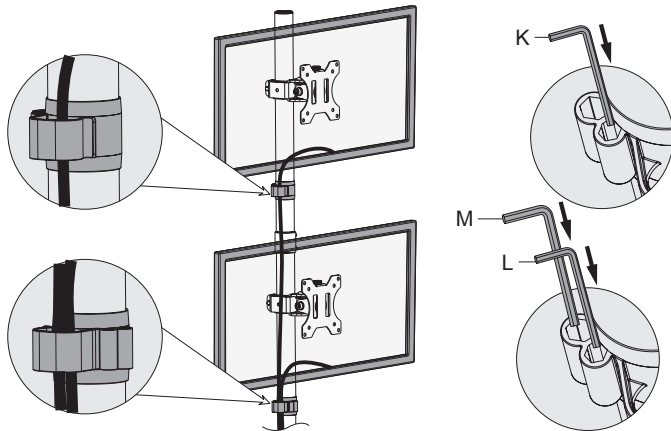
STEP 8

Adjust tilt angle with allen wrench (**M**).



STEP 9

Route wires through the cable management clips. Place allen wrenches into the cable management clips for easy accessibility.





Open **Monday - Friday 7:00am - 7:00pm** CST,
our dedicated support team can offer immediate assistance with rapid response times. If any parts are received damaged or defective, please contact us. We are happy to replace parts to ensure you have a fully functioning product.



309-278-5303

AVG. RESOLUTION TIME (*within office hrs*): **5M 4S**



www.vivo-us.com
Chat live with an agent!

AVG. RESOLUTION TIME (*within office hrs*): **< 15 M**



help@vivo-us.com

AVG. RESPONSE TIME (*within office hrs*): **1HR 8M**

- 23% within < 15m
- 38% within < 30m
- 61% within < 1hr
- 83% within < 2hr
- 92% within < 3hr