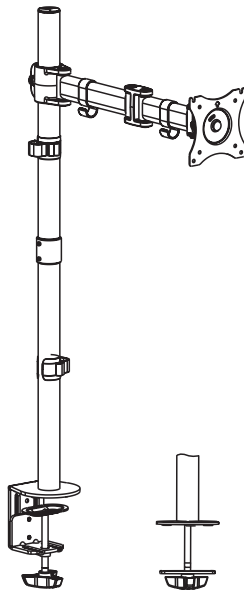




Single Monitor Extra Tall Desk Mount

Instruction Manual



SKU: STAND-V001T



Scan the QR code with your mobile device or follow the link for helpful videos and specifications related to this product.

<https://vivo-us.com/products/stand-v001t>

GET IN TOUCH | Monday-Friday from 7:00am-7:00pm CST



help@vivo-us.com



www.vivo-us.com
Chat live with an agent!



309-278-5303

WARNING!

If you do not understand these directions, or if you have any doubts about the safety of the installation, please call a qualified technician. Check carefully to make sure there are no missing or defective parts. Improper installation may cause damage or serious injury. Do not use this product for any purpose that is not explicitly specified in this manual. Do not exceed weight capacity. We cannot be liable for damage or injury caused by improper mounting, incorrect assembly or inappropriate use.

TIPOVER WARNING

SERIOUS OR FATAL CRUSHING INJURIES CAN OCCUR FROM TIPOVER. TO HELP PREVENT TIPOVER:

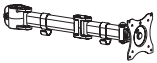
- NEVER ALLOW CHILDREN TO CLIMB, STAND, HANG, OR PLAY ON ANY PART OF MONITOR OR STAND.
- USE TIPOVER RESTRAINT OR ANCHOR STAND TO WALL

USE OF TIPOVER RESTRAINTS MAY ONLY REDUCE, BUT NOT ELIMINATE RISK OF TIPOVER.

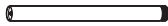
WARNING: CHOKING HAZARD

SMALL PARTS - NOT FOR CHILDREN UNDER 3 YEARS. ADULT SUPERVISION IS REQUIRED.

PACKAGE CONTENTS



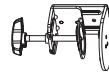
A (x1)
Arm



B (x1)
Bottom Pole



C (x1)
Top Pole



D (x1)
Clamp



E (x1)
Grommet Plate



F (x1)
Pole Connector



G (x2)
Cable Clip



H (x1)
Pole Cap



I (x5)
Soft Pad



J (x1)
Support Plate



S-A (x3)
M6x16mm Screw



M-A (x4)
M4x12mm Screw



M-B (x4)
M5x12mm Screw



M-C (x4)
M5 Washer



T-A (x1)
3mm Allen Wrench



T-B (x1)
4mm Allen Wrench



T-C (x1)
5mm Allen Wrench



T-D (x1)
6mm Allen Wrench

NOTE: SOME HARDWARE INCLUDED MAY NOT BE USED

TOOLS NEEDED



DO NOT EXCEED WEIGHT CAPACITY.

Failure to do so may result in serious injury.

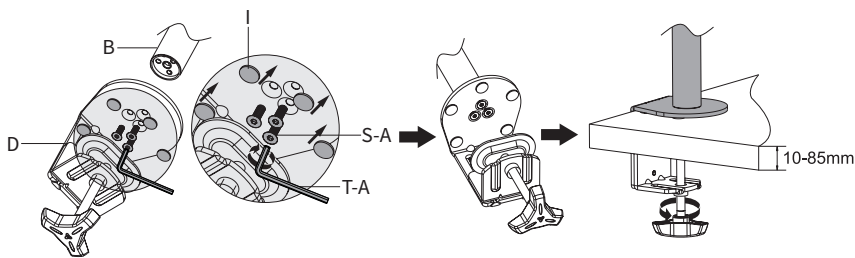
22lbs
(10kg)

ASSEMBLY STEPS

STEP 1

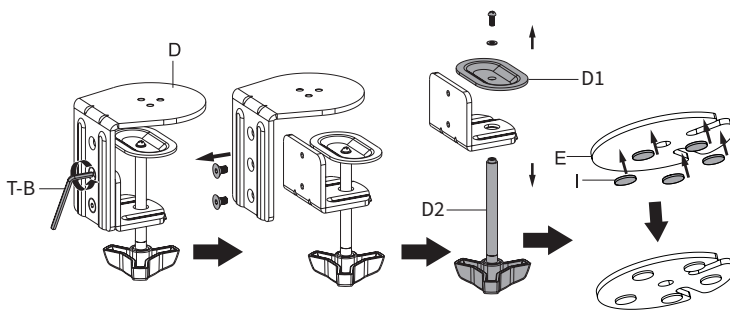
OPTION A: Clamp Installation

Install Clamp (**D**) to Bottom Pole (**B**) using M6x16mm Screws (**S-A**) and tighten using 3mm Allen Wrench (**T-A**). Remove the adhesive backing from Soft Pads (**I**) and place them on the underside of Clamp (**D**). Mount Clamp (**D**) to the desktop and tighten the knob.



OPTION B: Grommet Hole Installation

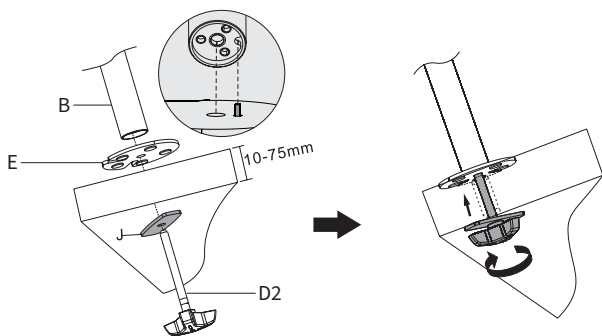
Disassemble Clamp (**D**) into individual parts. Remove Clamp Plate (**D1**) (You will not need this for Grommet installation) using Phillips screwdriver and remove Knob (**D2**). Remove the adhesive backing from Soft Pads (**I**) and place them on the underside of Grommet Plate (**E**).



STEP 1 (Continued)

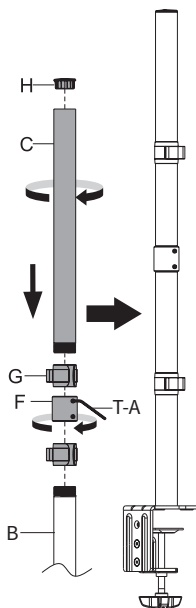
OPTION B: Grommet Hole Installation

Place Bottom Pole (**B**) on top of Grommet Plate (**E**). Secure to the desktop using Knob (**D2**) and Support Plate (**J**).



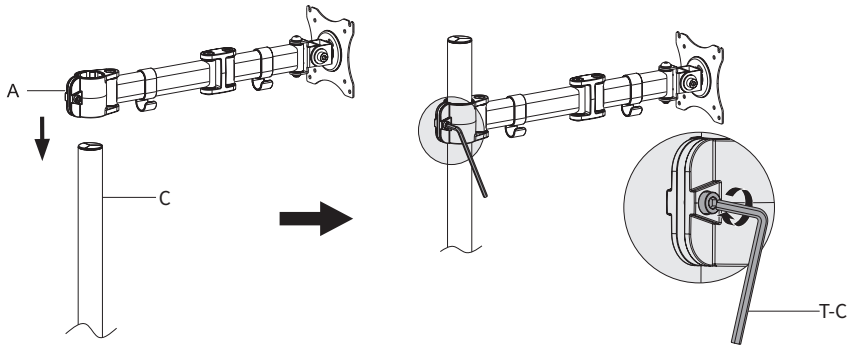
STEP 2

Slide Cable Clips (**G**) onto Bottom Pole (**B**) and Top Pole (**C**). Use the Pole Connector (**F**) to attach Top Pole (**C**) to Bottom Pole (**B**). Tighten the set screws on Pole Connector (**F**) using 3mm Allen Wrench (**T-A**). Insert Pole Cap (**H**) into the top of Top Pole (**C**).



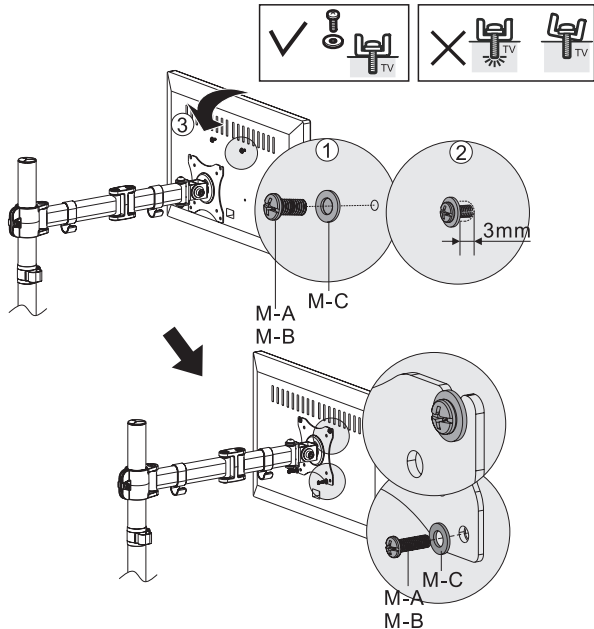
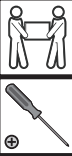
STEP 3

Loosen the screw on the back of Arm (A) using 5mm Allen Wrench (T-C). Slide Arm (A) over the top of Top Pole (C). Retighten the screw on Arm (A) using the 5mm Allen Wrench (T-C).



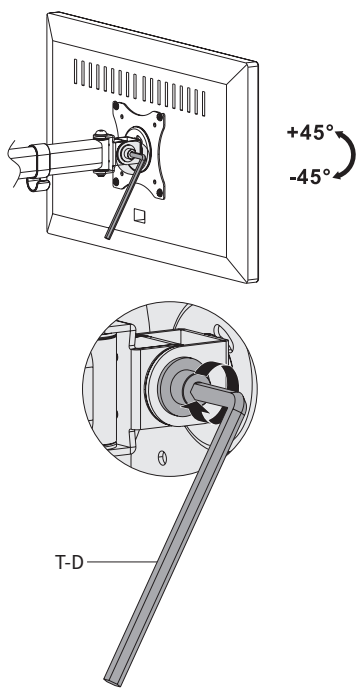
STEP 4

Install Screws (M-A or M-B) and M5 Washers (M-C) to the top mounting holes of your monitor, making sure to leave 3mm of threads exposed. Align Screws (M-A or M-B) in the VESA plate. Secure using two more Screws (M-A or M-B) and M5 Washers (M-C) in the bottom two holes. Tighten all four screws using a phillips screwdriver.



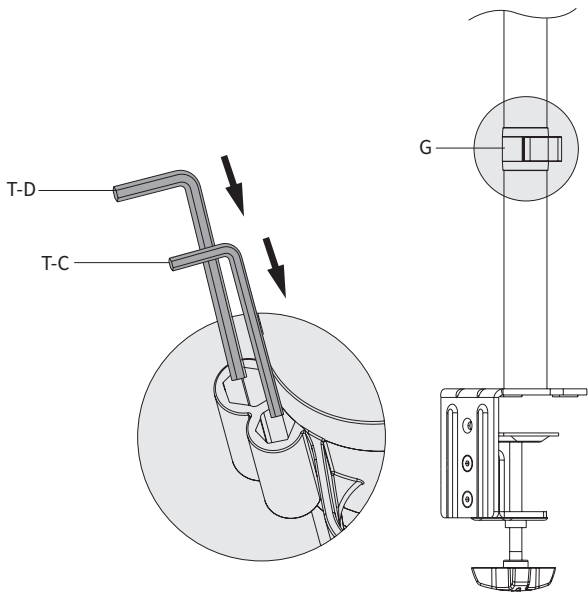
STEP 5

Adjust the tension in the monitor bracket with 6mm Allen Wrench (**T-D**) as shown in diagram.

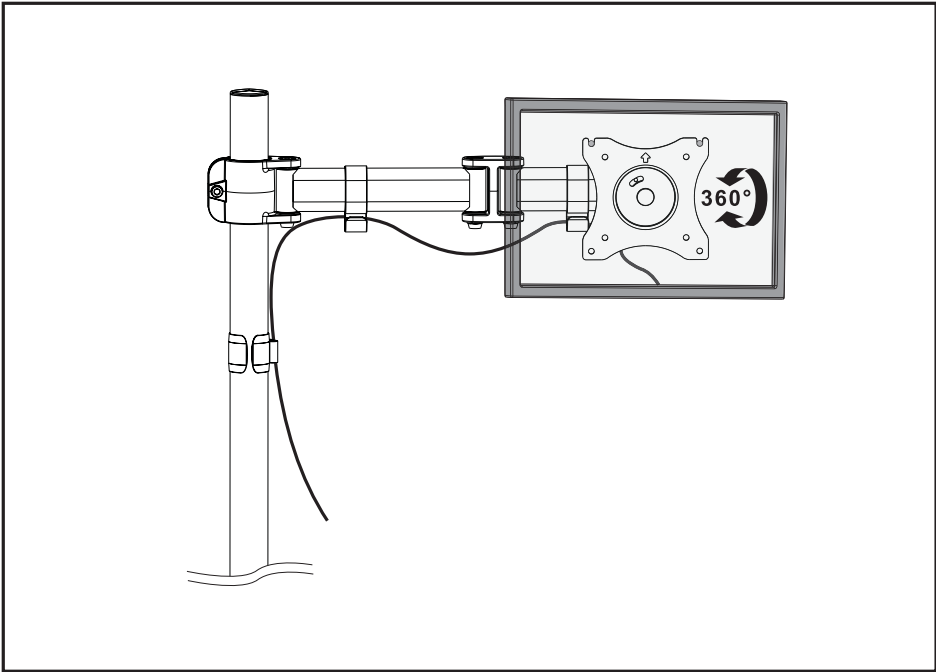


STEP 6

Store Allen Wrenches (**T-C**, **T-D**) in Cable Clip (**G**) for future adjustment.



Adjust as Desired





Open **Monday - Friday 7:00am - 7:00pm** CST,
our dedicated support team can offer immediate assistance with rapid response times. If any parts are received damaged or defective, please contact us. We are happy to replace parts to ensure you have a fully functioning product.



309-278-5303

AVG. RESOLUTION TIME (*within office hrs*): **5M 4S**



www.vivo-us.com
Chat live with an agent!

AVG. RESOLUTION TIME (*within office hrs*): **< 15 M**



help@vivo-us.com

AVG. RESPONSE TIME (*within office hrs*): **1HR 8M**

- 23% within < 15m
- 38% within < 30m
- 61% within < 1hr
- 83% within < 2hr
- 92% within < 3hr