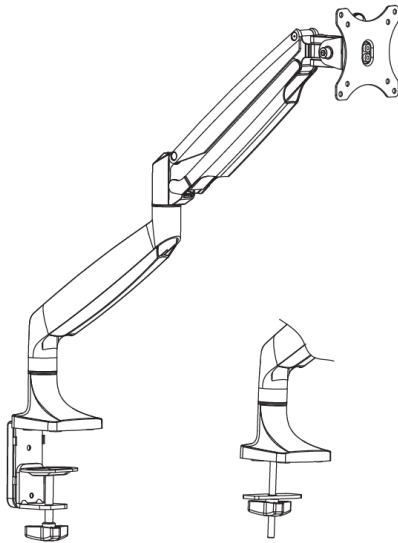




Pneumatic Arm Single Monitor Desk Mount Instruction Manual



SKU: STAND-V001Q



Scan the QR code with your mobile device or follow the link for helpful videos and specifications related to this product.

<https://vivo-us.com/products/stand-v001q>

GET IN TOUCH | Monday-Friday from 7:00am-7:00pm CST



help@vivo-us.com



www.vivo-us.com
Chat live with an agent!



309-278-5303

WARNING!

If you do not understand these directions, or if you have any doubts about the safety of the installation, please call a qualified technician. Check carefully to make sure there are no missing or defective parts. Improper installation may cause damage or serious injury. Do not use this product for any purpose that is not explicitly specified in this manual. Do not exceed weight capacity. We cannot be liable for damage or injury caused by improper mounting, incorrect assembly or inappropriate use.

TIPOVER WARNING

SERIOUS OR FATAL CRUSHING INJURIES CAN OCCUR FROM TIPOVER. TO HELP PREVENT TIPOVER:

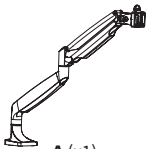
- NEVER ALLOW CHILDREN TO CLIMB, STAND, HANG, OR PLAY ON ANY PART OF MONITOR OR STAND.
- USE TIPOVER RESTRAINT OR ANCHOR STAND TO WALL

USE OF TIPOVER RESTRAINTS MAY ONLY REDUCE, BUT NOT ELIMINATE RISK OF TIPOVER.

WARNING: CHOKING HAZARD

SMALL PARTS - NOT FOR CHILDREN UNDER 3 YEARS. ADULT SUPERVISION IS REQUIRED.

PACKAGE CONTENTS



A (x1)
Arm



B (x1)
VESA Plate



C (x1)
Clamp Base Support



D (x1)
Clamp



E (x1)
Cable Clip



F (x1)
Base Support



G (x1)
Support Plate



H (x1)
Knob



I (x2)
Pad



S-A (x1)
M8x105mm
Screw



S-B (x5)
M6x10mm
Screw



M-A (x4)
M4x12



M-B (x4)
M5x12



M-C (x4)
M5 Washer



T-A (1)
4mm Allen
Wrench



T-B (x1)
6mm Allen
Wrench

NOTE: SOME HARDWARE INCLUDED MAY NOT BE USED

TOOLS NEEDED



DO NOT EXCEED WEIGHT CAPACITY.

Failure to do so may result in serious injury.

2-20lbs
(1-9kg)

ASSEMBLY STEPS

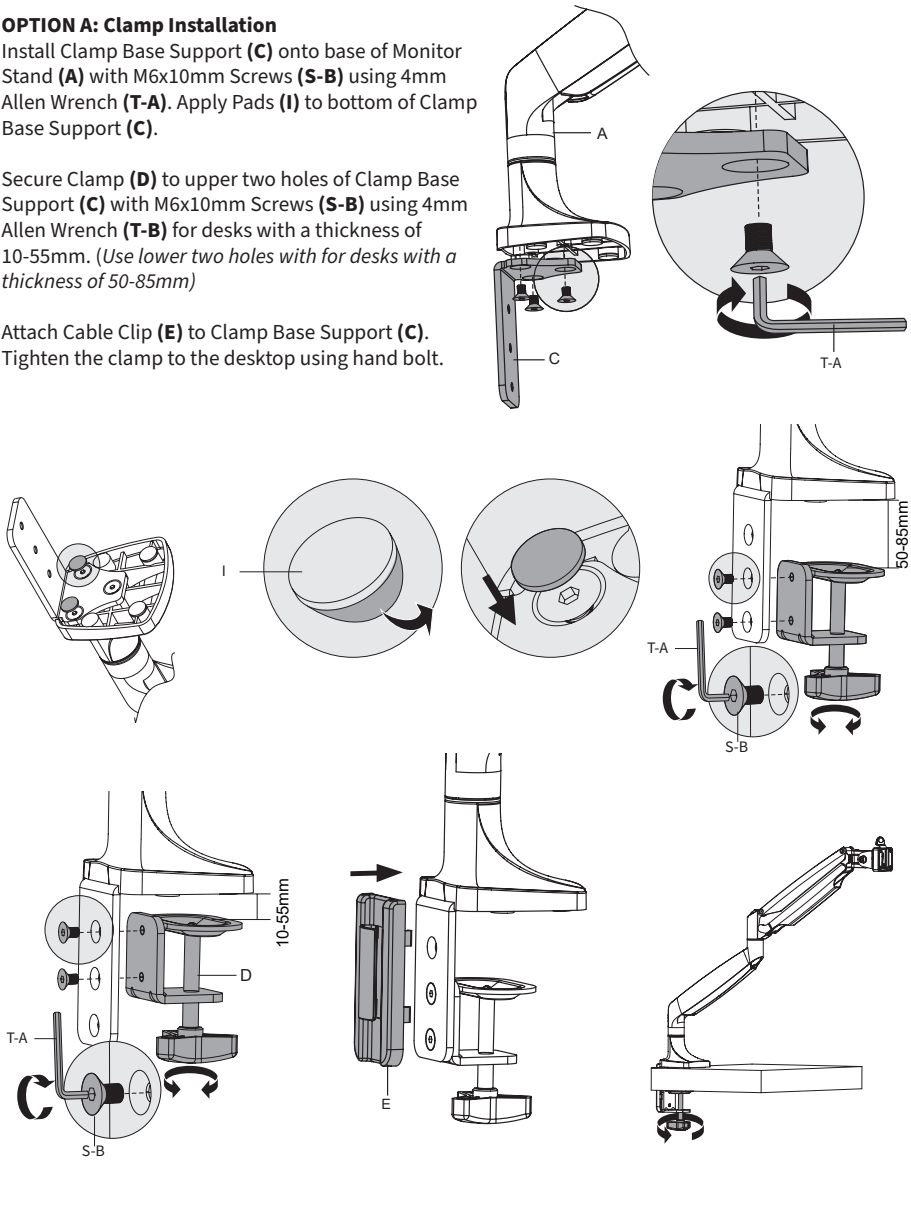
STEP 1

OPTION A: Clamp Installation

Install Clamp Base Support (C) onto base of Monitor Stand (A) with M6x10mm Screws (S-B) using 4mm Allen Wrench (T-A). Apply Pads (I) to bottom of Clamp Base Support (C).

Secure Clamp (D) to upper two holes of Clamp Base Support (C) with M6x10mm Screws (S-B) using 4mm Allen Wrench (T-B) for desks with a thickness of 10-55mm. (Use lower two holes with for desks with a thickness of 50-85mm)

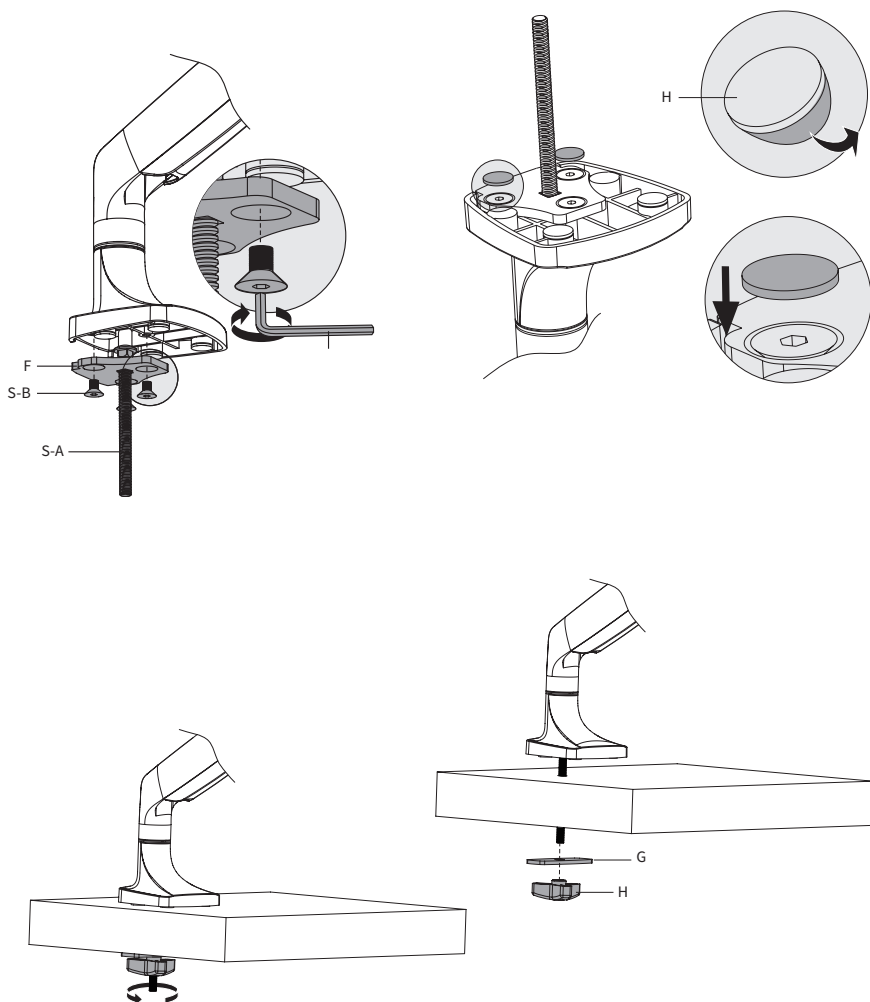
Attach Cable Clip (E) to Clamp Base Support (C).
Tighten the clamp to the desktop using hand bolt.



STEP 1 (Continued)

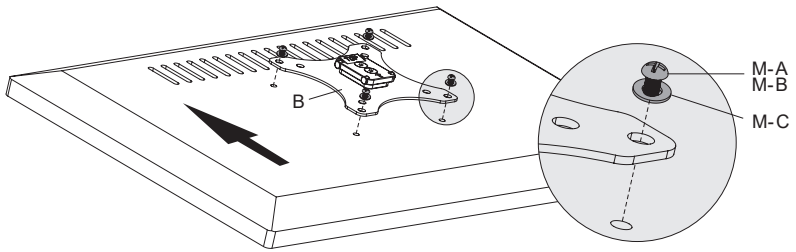
OPTION B: Grommet Base Installation

Slide M8x105mm Screw (S-A) through the top of the Base Support (F) and install on base of Monitor Stand (A) with M6x10mm Screws (S-B) using 4mm Allen Wrench (T-A). Apply Pads (I) to bottom of Base Support (F). Position stand on desk with M8x105mm Screw (S-A) through hole, and secure by using the Support Plate (G) and Knob (H) on underside of the mounting surface.



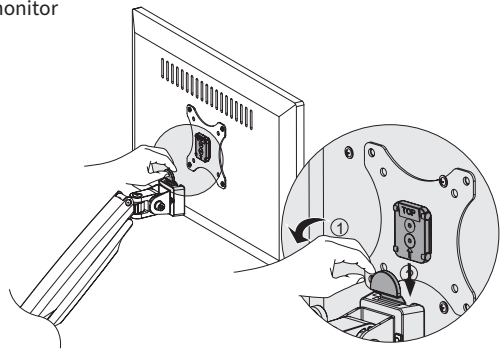
STEP 2

Position VESA Plate **(B)** on back of monitor and secure with Screws **(M-A or M-B)** with M5 Washers **(M-C)**.



STEP 3

Pull back latch on monitor arm, and slide monitor into place.



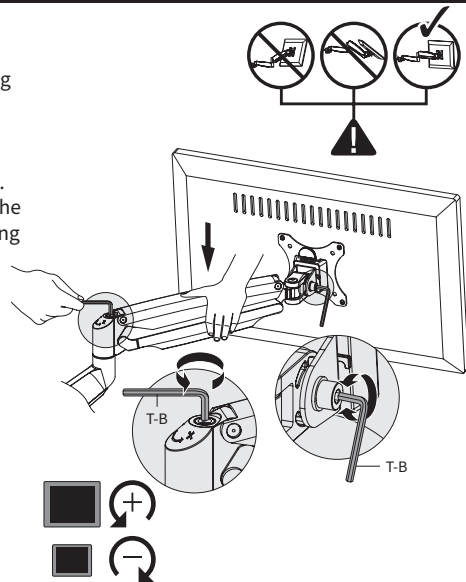
STEP 4

If needed, adjust the bolt on the side of the hinge behind the VESA plate to tighten or loosen the tilt angle support. Adjust gas spring tension by turning screw with 6mm Allen Wrench **(T-B)**. Clockwise reduces tension, counter-clockwise increases tension. The tension should be just enough to hold your monitor in place without lifting itself up.

NOTE: Tighten the socket set screw on the top of the gas spring adjustment screw if the joints are making a popping sound.

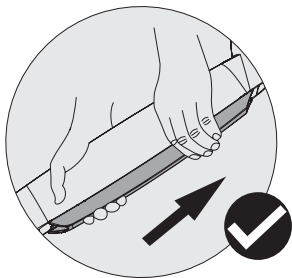
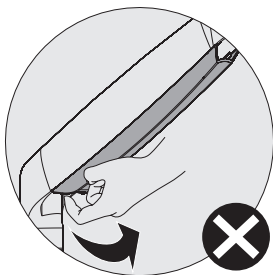
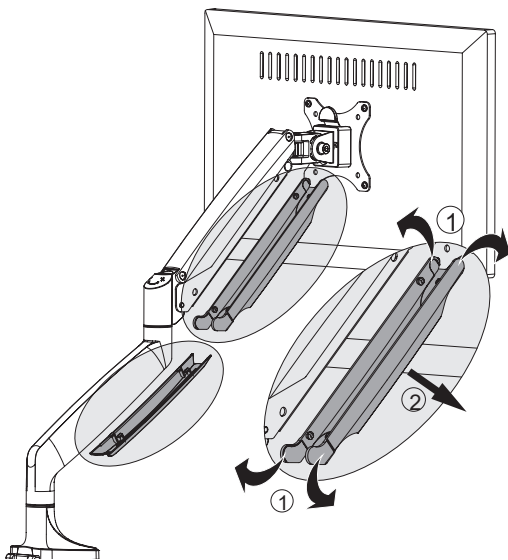
WARNING:
Monitor must be installed on mount before making tension adjustments to the gas spring arm.

Keep monitor in a straight orientation when making adjustments.



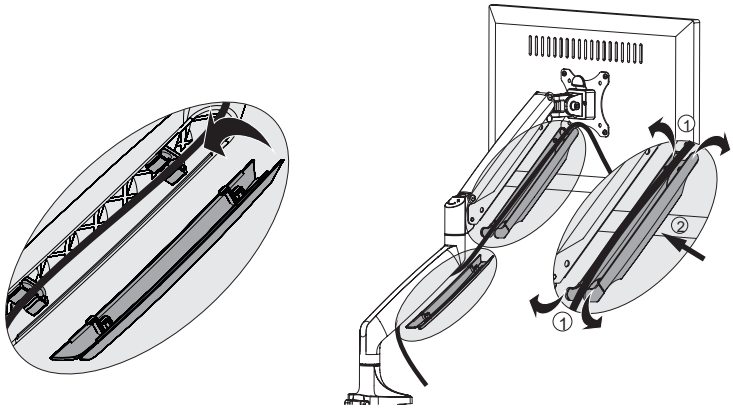
STEP 5

Remove cable covers as shown from upper and lower arms.



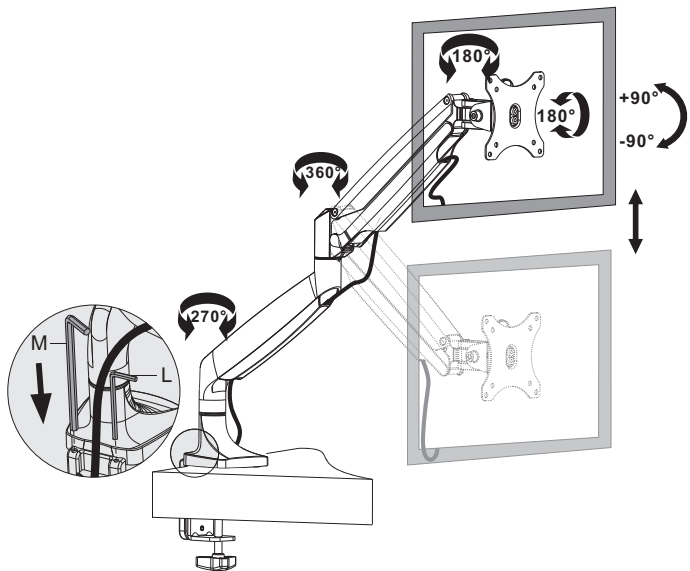
STEP 6

Replace covers making sure the cables have enough slack to allow free movement of the arm.



STEP 7

Store tools in Cable Clip (E) if clamp option is used.





Love your new VIVO setup and want to share?
Tag us in your photo! [@vivo_us](#)

LAST UPDATED: 02/01/2023
REV1.1



Open **Monday - Friday 7:00am - 7:00pm** CST,
our dedicated support team can offer immediate assistance with rapid response times. If any parts are received damaged or defective, please contact us. We are happy to replace parts to ensure you have a fully functioning product.



309-278-5303

AVG. RESOLUTION TIME (*within office hrs*): **5M 4S**



www.vivo-us.com
Chat live with an agent!

AVG. RESOLUTION TIME (*within office hrs*): **< 15 M**



help@vivo-us.com

AVG. RESPONSE TIME (*within office hrs*): **1HR 8M**

- 23% within < 15m
- 38% within < 30m
- 61% within < 1hr
- 83% within < 2hr
- 92% within < 3hr

FOR MORE VIVO PRODUCTS, CHECK OUT OUR WEBSITE AT: www.vivo-us.com