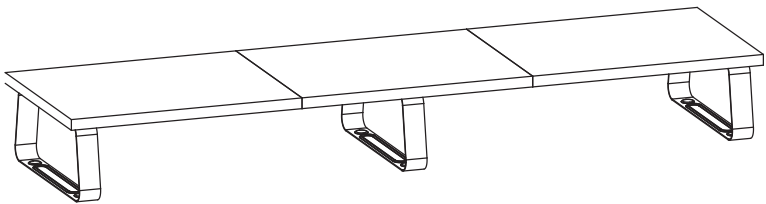




---

## Black Monitor Riser

Instruction Manual



**SKU: STAND-V000DL**



Scan the QR code with your mobile device or follow the link for helpful videos and specifications related to this product.

<https://vivo-us.com/products/stand-v000dl>

---

GET IN TOUCH | Monday-Friday from 7:00am-7:00pm CST



help@vivo-us.com



www.vivo-us.com  
*Chat live with an agent!*



309-278-5303

## **WARNING!**

If you do not understand these directions, or if you have any doubts about the safety of the installation, please call a qualified technician. Check carefully to make sure there are no missing or defective parts. Improper installation may cause damage or serious injury. Do not use this product for any purpose that is not explicitly specified in this manual. Do not exceed weight capacity. We cannot be liable for damage or injury caused by improper mounting, incorrect assembly or inappropriate use.

## **TIPOVER WARNING**

SERIOUS OR FATAL CRUSHING INJURIES CAN OCCUR FROM TIPOVER. TO HELP PREVENT TIPOVER:

- NEVER ALLOW CHILDREN TO CLIMB, STAND, HANG, OR PLAY ON ANY PART OF MONITOR OR STAND.
- USE TIPOVER RESTRAINT OR ANCHOR STAND TO WALL

**USE OF TIPOVER RESTRAINTS MAY ONLY REDUCE, BUT NOT ELIMINATE RISK OF TIPOVER.**

## **WARNING: CHOKING HAZARD**

SMALL PARTS - NOT FOR CHILDREN UNDER 3 YEARS. ADULT SUPERVISION IS REQUIRED.

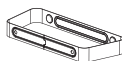
## PACKAGE CONTENTS



**A** (x2)  
End Panel



**B** (x1)  
Center Panel



**C** (x3)  
Leg



**D** (x4)  
Connector  
Plates



**S-A** (x6)  
M6x10 Screw



**S-B** (x16)  
ST5.5x13 Screw



**S-C** (x6)  
Rubber Pad



**T-A** (x1)  
4mm Allen  
Wrench

**NOTE:** SOME HARDWARE INCLUDED MAY NOT BE USED

DO NOT EXCEED WEIGHT CAPACITY.

Failure to do so may result in serious injury.



## TOOLS NEEDED

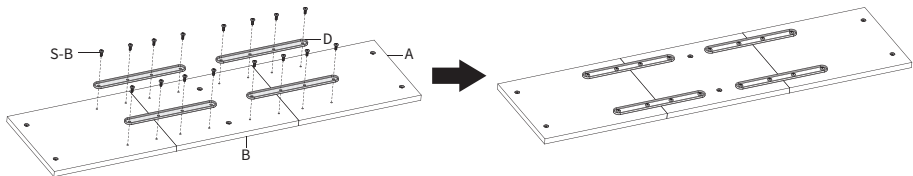


**Phillips  
Screwdriver**

# ASSEMBLY STEPS

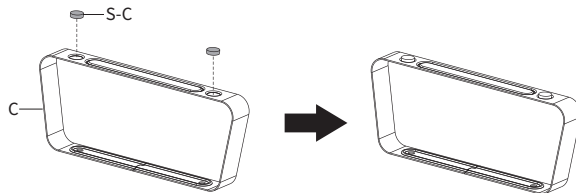
## STEP 1

Place End Panels (**A**) and Center Panel (**B**) upside down and lay Connector Plates (**D**) over predrilled holes. Attach Connector Plates (**D**) to End Panels (**A**) and Center Panel (**B**) using ST5.5x13 Screw (**S-B**) and a phillips screwdriver.



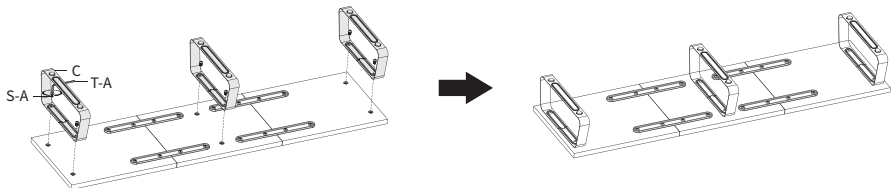
## STEP 2

Remove adhesive backing from Rubber Pads (**S-C**) and stick them to the bottoms of Legs (**C**).




## STEP 3

Secure Legs (**C**) to top assembly using M6x10 Screws (**S-A**) and 4mm Allen Wrench (**T-A**).





Open **Monday - Friday 7:00am - 7:00pm** CST,  
our dedicated support team can offer immediate assistance with rapid response times. If any parts are received damaged or defective, please contact us. We are happy to replace parts to ensure you have a fully functioning product.

 309-278-5303

**AVG. RESOLUTION TIME** (*within office hrs*): **5M 4S**

 [www.vivo-us.com](http://www.vivo-us.com)  
*Chat live with an agent!*

**AVG. RESOLUTION TIME** (*within office hrs*): **< 15 M**

 [help@vivo-us.com](mailto:help@vivo-us.com)

**AVG. RESPONSE TIME** (*within office hrs*): **1HR 8M**

- 23% within < 15m
- 38% within < 30m
- 61% within < 1hr
- 83% within < 2hr
- 92% within < 3hr