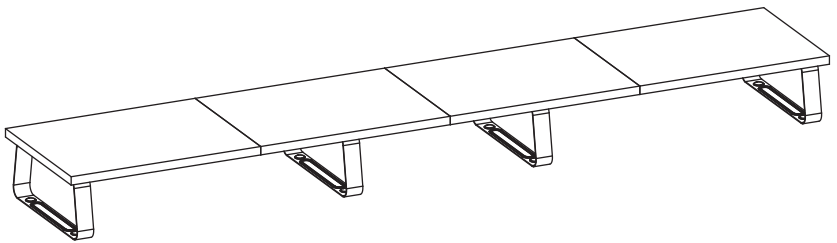




Black Extra Long Monitor Riser

Instruction Manual



SKU: STAND-V000D5



Scan the QR code with your mobile device or follow the link for helpful videos and specifications related to this product.

<https://vivo-us.com/products/stand-v000d5>

GET IN TOUCH | Monday-Friday from 7:00am-7:00pm CST



help@vivo-us.com



www.vivo-us.com
Chat live with an agent!



309-278-5303

WARNING!

If you do not understand these directions, or if you have any doubts about the safety of the installation, please call a qualified technician. Check carefully to make sure there are no missing or defective parts. Improper installation may cause damage or serious injury. Do not use this product for any purpose that is not explicitly specified in this manual. Do not exceed weight capacity. We cannot be liable for damage or injury caused by improper mounting, incorrect assembly or inappropriate use.

TIPOVER WARNING

SERIOUS OR FATAL CRUSHING INJURIES CAN OCCUR FROM TIPOVER. TO HELP PREVENT TIPOVER:

- NEVER ALLOW CHILDREN TO CLIMB, STAND, HANG, OR PLAY ON ANY PART OF MONITOR OR STAND.
- USE TIPOVER RESTRAINT OR ANCHOR STAND TO WALL

USE OF TIPOVER RESTRAINTS MAY ONLY REDUCE, BUT NOT ELIMINATE RISK OF TIPOVER.

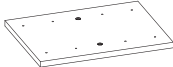
WARNING: CHOKING HAZARD

SMALL PARTS - NOT FOR CHILDREN UNDER 3 YEARS. ADULT SUPERVISION IS REQUIRED.

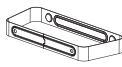
PACKAGE CONTENTS



A (x2)
End Panel



B (x2)
Center Panel



C (x4)
Leg



D (x6)
Connector Plate



S-A (x8)
M6x10mm Screw



S-B (x24)
ST5.5x13mm Screw



S-C (x8)
Rubber Pad



T-A (x1)
4mm Allen Wrench

TOOLS NEEDED



DO NOT EXCEED WEIGHT CAPACITY.

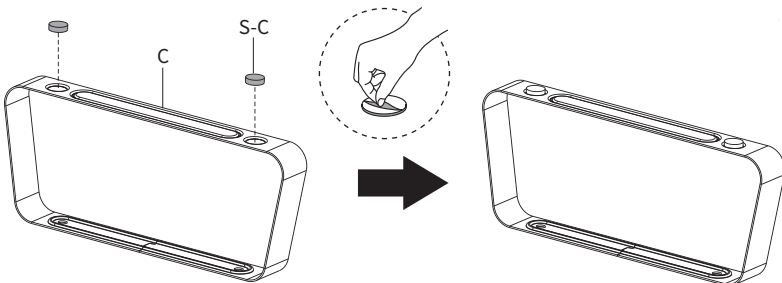
Failure to do so may result in serious injury.

**44lbs
(20kg)**

ASSEMBLY STEPS

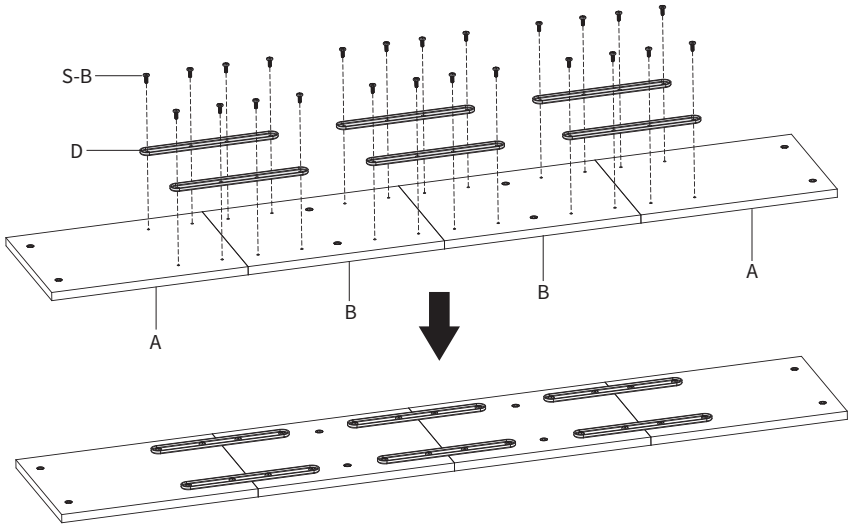
STEP 1

Remove adhesive backing from Rubber Pads (**S-C**) and stick them to the bottoms of Legs (**C**).



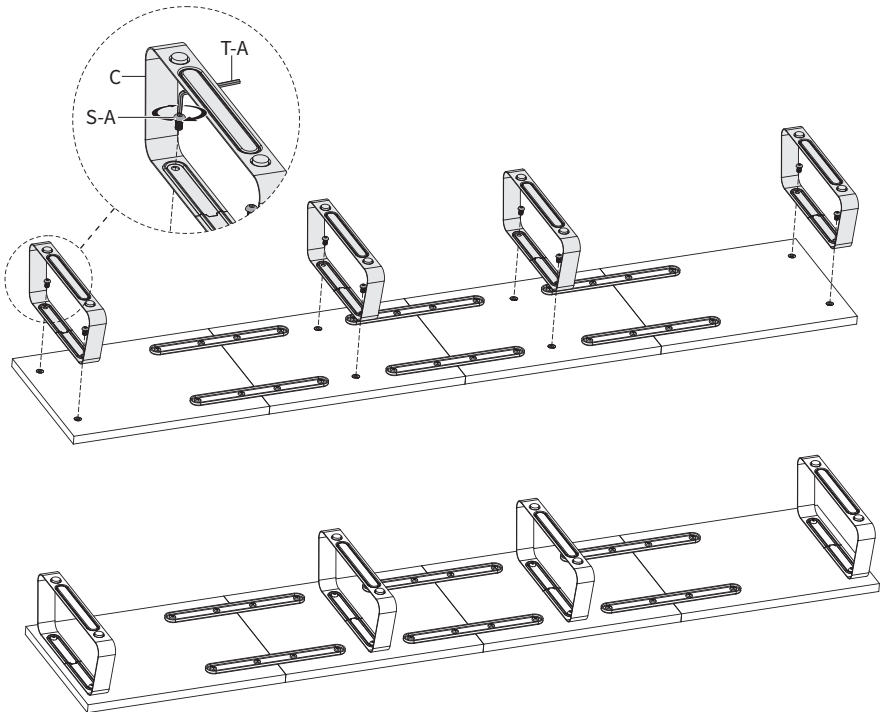
STEP 2

Place End Panels (**A**) and Center Panels (**B**) upside down and lay Connector Plates (**D**) over predrilled holes. Attach Connector Plates (**D**) to End Panels (**A**) and Center Panels (**B**) using ST5.5x13mm Screws (**S-B**) and a Phillips screwdriver.




STEP 3

Secure Legs (**C**) to top assembly using M6x10mm Screws (**S-A**) and 4mm Allen Wrench (**T-A**).





Open **Monday - Friday 7:00am - 7:00pm** CST,
our dedicated support team can offer immediate assistance with rapid response times. If any parts are received damaged or defective, please contact us. We are happy to replace parts to ensure you have a fully functioning product.

 309-278-5303

AVG. RESOLUTION TIME (*within office hrs*): **5M 4S**

 www.vivo-us.com
Chat live with an agent!

AVG. RESOLUTION TIME (*within office hrs*): **< 15 M**

 help@vivo-us.com

AVG. RESPONSE TIME (*within office hrs*): **1HR 8M**

- 23% within < 15m
- 38% within < 30m
- 61% within < 1hr
- 83% within < 2hr
- 92% within < 3hr