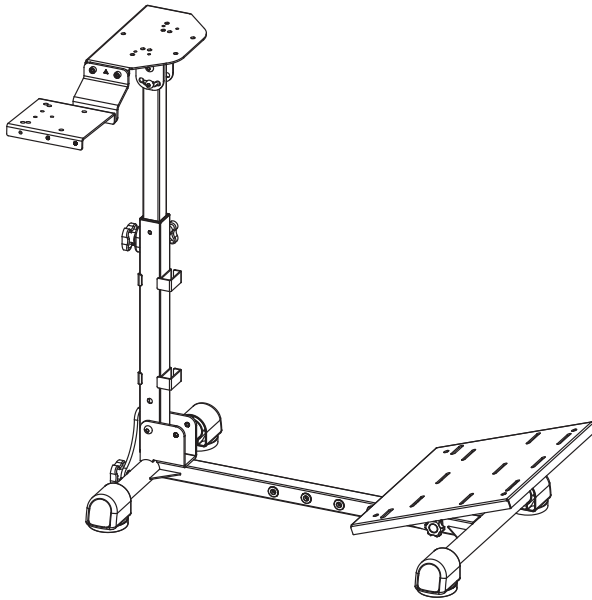




Racing Steering Wheel Stand

Instruction Manual



SKU: STAND-RACE1A



Scan the QR code with your mobile device or follow the link for helpful videos and specifications related to this product.

<https://vivo-us.com/products/stand-race1a>

GET IN TOUCH | Monday-Friday from 7:00am-7:00pm CST



help@vivo-us.com



www.vivo-us.com
Chat live with an agent!



309-278-5303



WARNING!

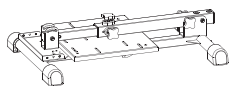
If you do not understand these directions, or if you have any doubts about the safety of the installation, please call a qualified technician. Check carefully to make sure there are no missing or defective parts. Improper installation may cause damage or serious injury. Do not use this product for any purpose that is not explicitly specified in this manual. Do not exceed weight capacity. We cannot be liable for damage or injury caused by improper mounting, incorrect assembly or inappropriate use.



WARNING: CHOKING HAZARD

SMALL PARTS - NOT FOR CHILDREN UNDER 3 YEARS. ADULT SUPERVISION IS REQUIRED.

PACKAGE CONTENTS



A (x1)
Stand



B (x1)
Upright Support
Plate



C (x4)
Foot



D (x1)
Shifter Support
Bracket



E (x1)
Shifter Plate



F (x2)
Cable Clip



G (x6)
Zip tie



S-A (x4)
M8x16mm Screw



S-B (x4)
M6x12mm Screw



T-A (x1)
5mm Allen Wrench

DO NOT EXCEED WEIGHT CAPACITY.

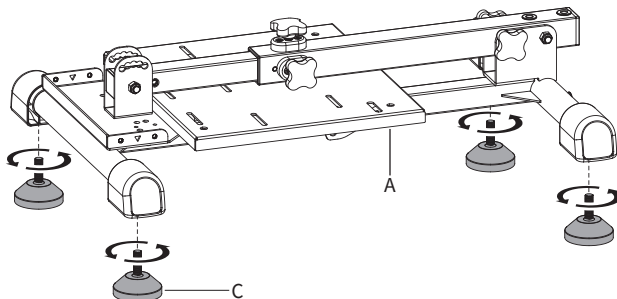
Failure to do so may result in serious injury.

44lbs
(20kg)

ASSEMBLY STEPS

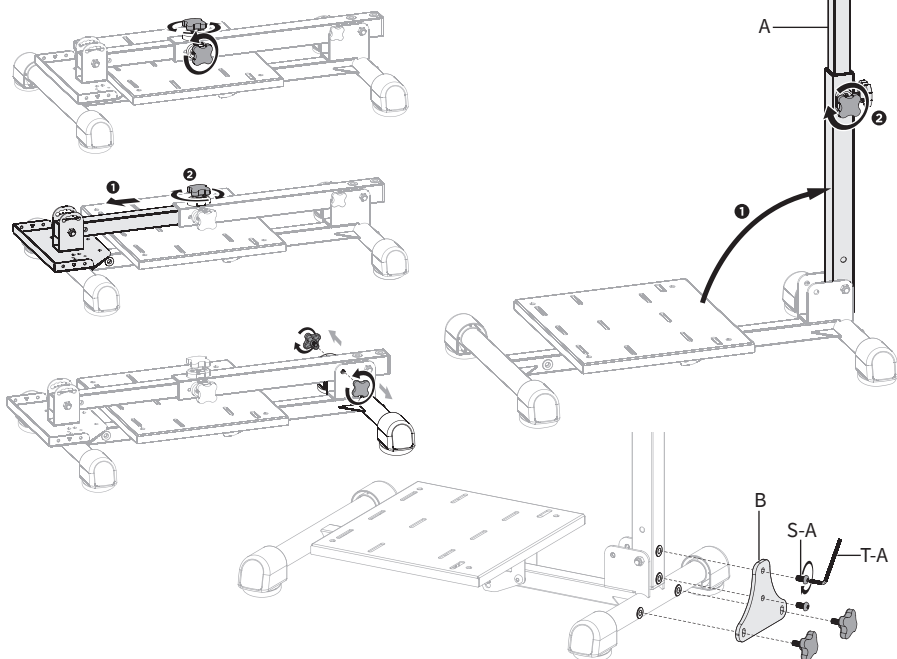
STEP 1

Screw Feet **(C)** into bottom of Stand **(A)**.



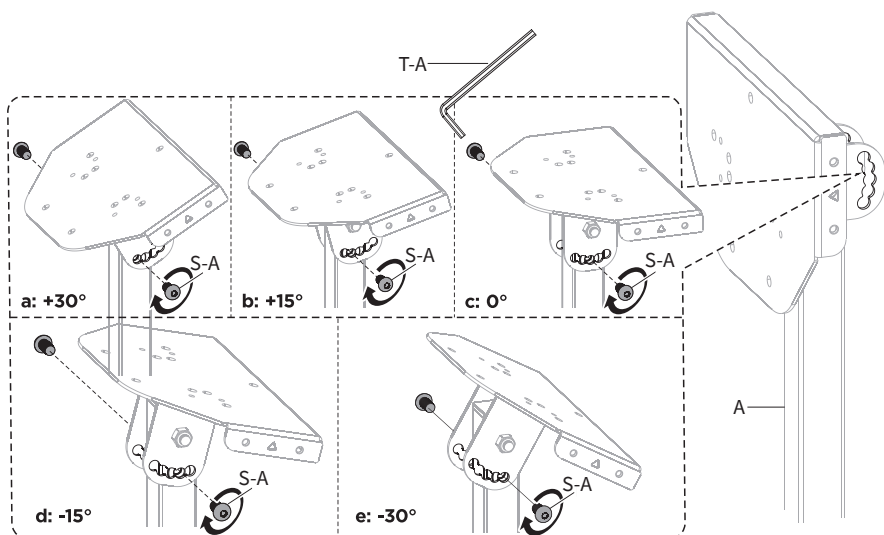
STEP 2

Loosen the knobs on the middle of the post on Stand **(A)**, then extend the post. Remove the two knobs locking the post in the folded position. Raise the post, then install the Upright Support Plate **(B)** to the base and post using M8x16mm Screws **(S-A)** and the previously removed knobs. Tighten screws with 5mm Allen Wrench **(T-A)**.



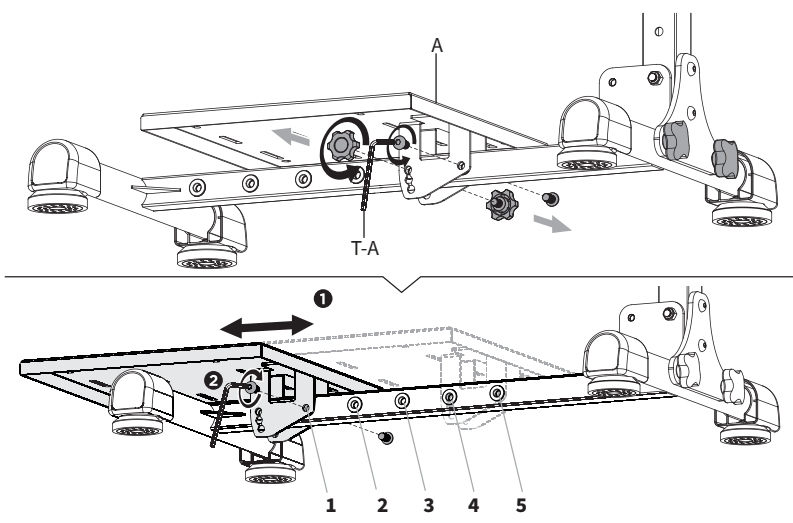
STEP 3

Tilt the wheel plate on Stand **(A)** up to the desired angle, then insert M8x16mm Screws **(S-A)** to secure the tilt angle. Tighten with 5mm Allen Wrench **(T-A)**.



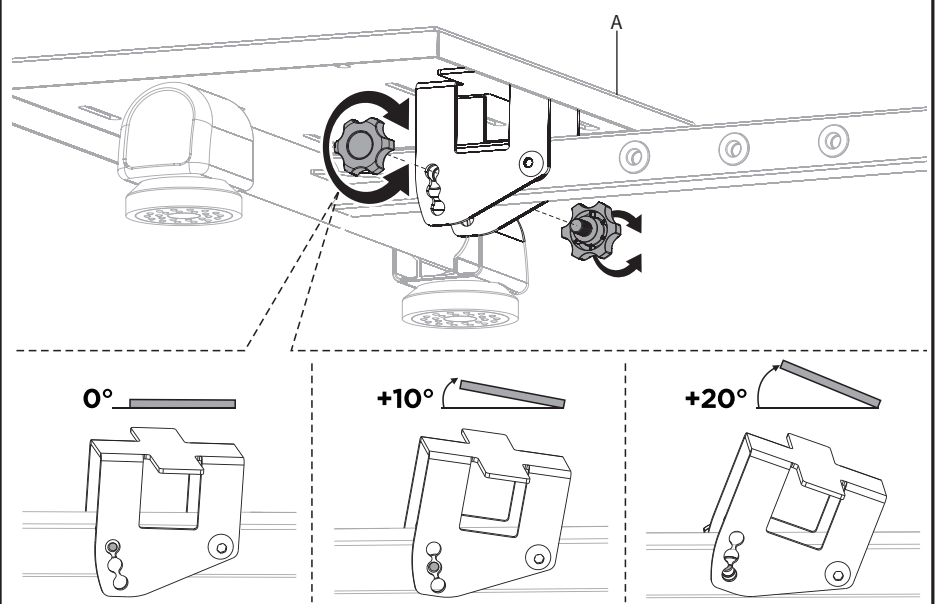
STEP 4

Remove the knobs from the foot plate in Stand **(A)**. Remove the screws using 5mm Allen wrench **(T-A)**, move the foot plate to the desired position **(1-5)**, then reinstall the screws.



STEP 5

Adjust the foot plate on Stand **(A)** to the desired angle and reinsert the previously removed knobs.

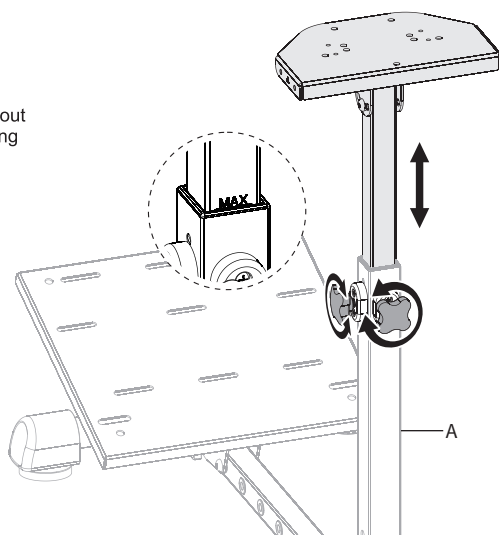


STEP 6

Adjust the post on Stand **(A)** to the desired height, then tighten the knobs to secure the height.

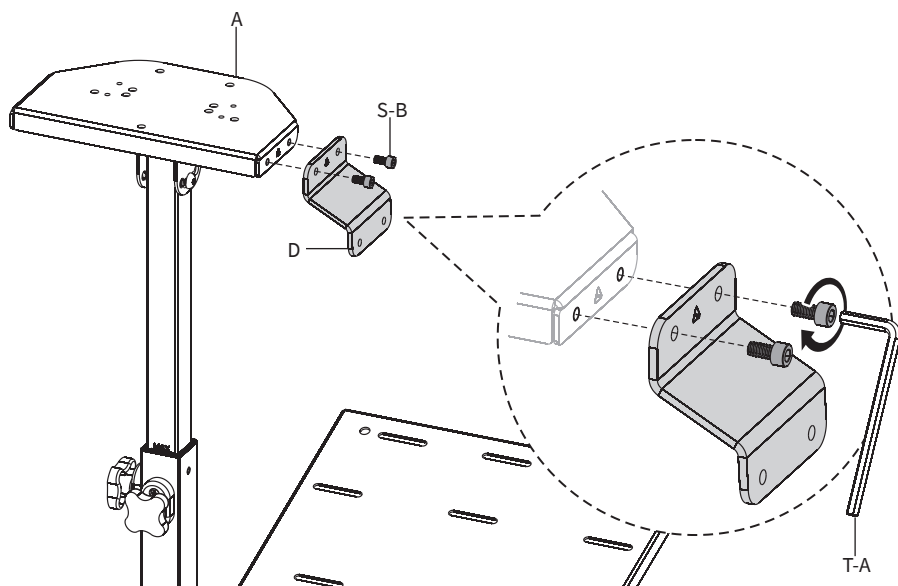


Do not pull the column out beyond the MAX marking found on the column.



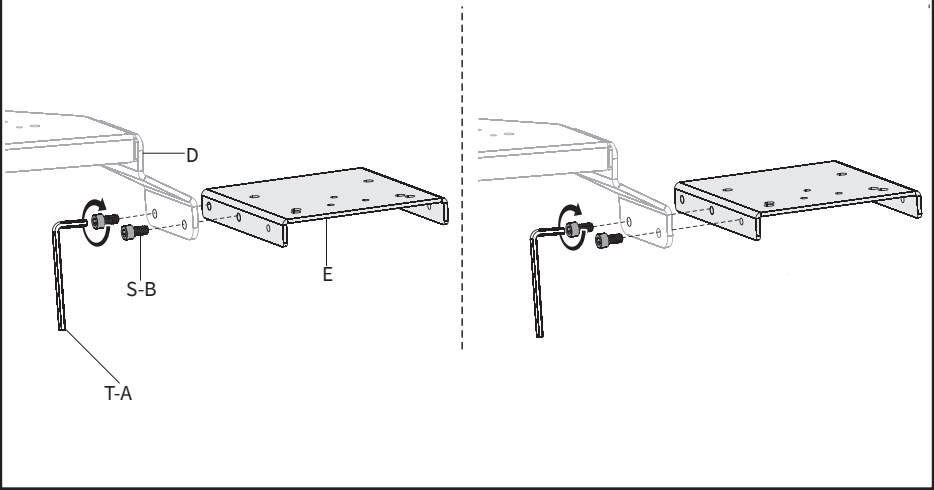
STEP 7

Install Shifter Support Bracket **(D)** to the left or right side of the wheel support plate on Stand **(A)** using M6x12mm Screws **(S-B)**. Tighten with 5mm Allen Wrench **(T-A)**.



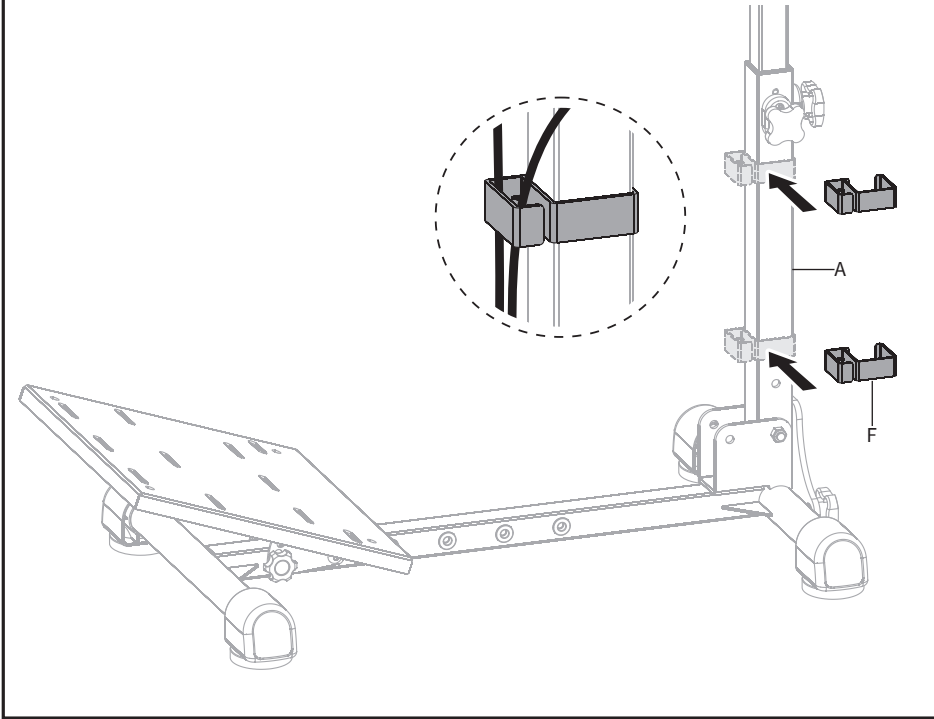
STEP 8

Mount Shifter Plate **(E)** to Shifter Support Bracket **(D)** using M6x12mm Screws **(S-B)** and tighten with 5mm Allen Wrench **(T-A)**. Shifter Plate **(E)** may be installed to the close or far position depending on user preference.



STEP 9

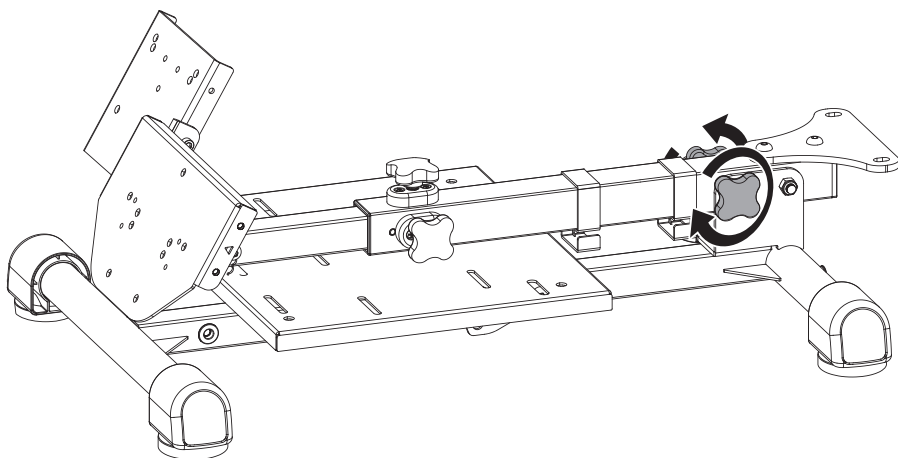
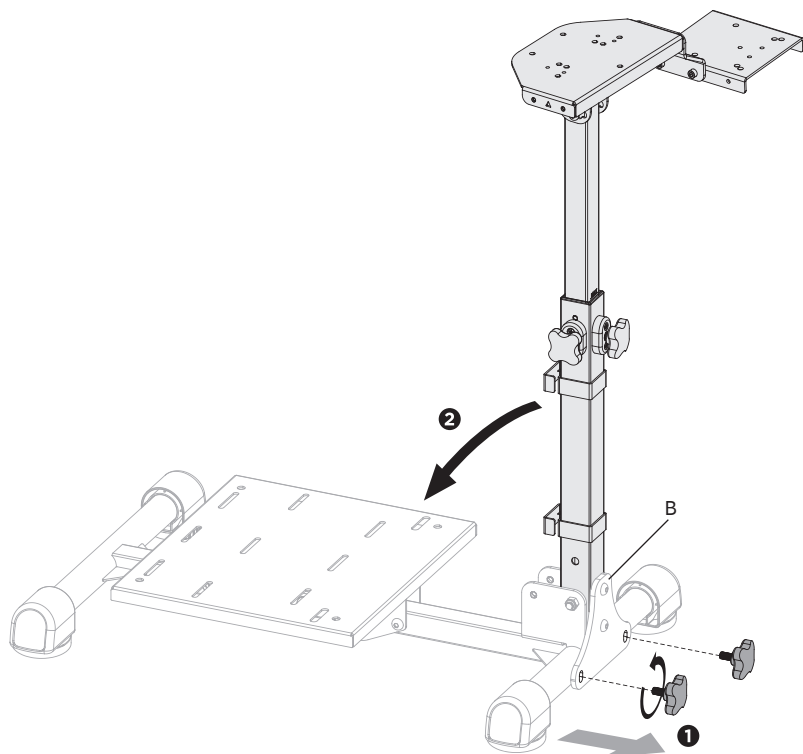
Attach Cable Clips **(F)** to the post on Stand **(A)** for cable management.



STEP 10

FOLDING INSTRUCTIONS

Remove the lower two knobs from the Upright Support Plate (**B**) and gently fold the post down. Loosen the knobs on the middle of the post to extend for clearance if needed. Reinsert the previously removed knobs into the sides to lock the post in the folded position.





Love your new VIVO setup and want to share?
Tag us in your photo! **@vivo_us**

LAST UPDATED: 01/28/2022

REV3



Open **Monday - Friday 7:00am - 7:00pm CST**,
our dedicated support team can offer immediate assistance with rapid response times. If any
parts are received damaged or defective, please contact us. We are happy to replace parts to
ensure you have a fully functioning product.



309-278-5303

AVG. RESOLUTION TIME (*within office hrs*): **5M 4S**



www.vivo-us.com
Chat live with an agent!

AVG. RESOLUTION TIME (*within office hrs*): **< 15 M**



help@vivo-us.com

AVG. RESPONSE TIME (*within office hrs*): **1HR 8M**

- 23% within < 15m
- 38% within < 30m
- 61% within < 1hr
- 83% within < 2hr
- 92% within < 3hr

FOR MORE VIVO PRODUCTS, CHECK OUT OUR WEBSITE AT: www.vivo-us.com