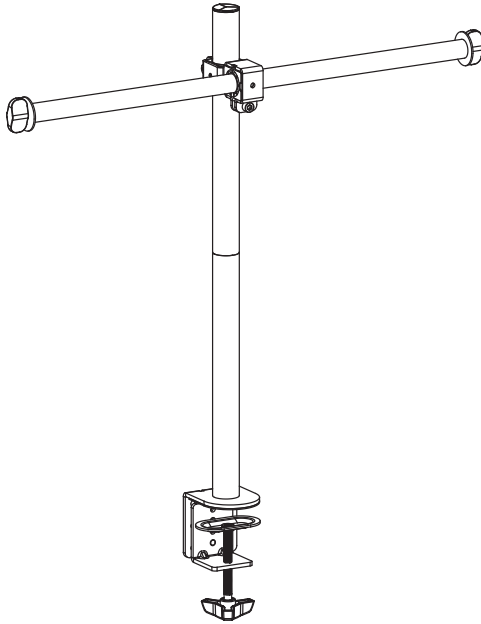




Clamp-on Reel Holder for 3D Printer

Instruction Manual



SKU: STAND-3DRH



Scan the QR code with your mobile device or follow the link for helpful videos and specifications related to this product.

<https://vivo-us.com/products/stand-3drh>

GET IN TOUCH | Monday-Friday from 7:00am-7:00pm CST



help@vivo-us.com



www.vivo-us.com
Chat live with an agent!



309-278-5303

⚠️ WARNING!

If you do not understand these directions, or if you have any doubts about the safety of the installation, please call a qualified technician. Check carefully to make sure there are no missing or defective parts. Improper installation may cause damage or serious injury. Do not use this product for any purpose that is not explicitly specified in this manual. Do not exceed weight capacity. We cannot be liable for damage or injury caused by improper mounting, incorrect assembly or inappropriate use.

⚠️ WARNING: CHOKING HAZARD

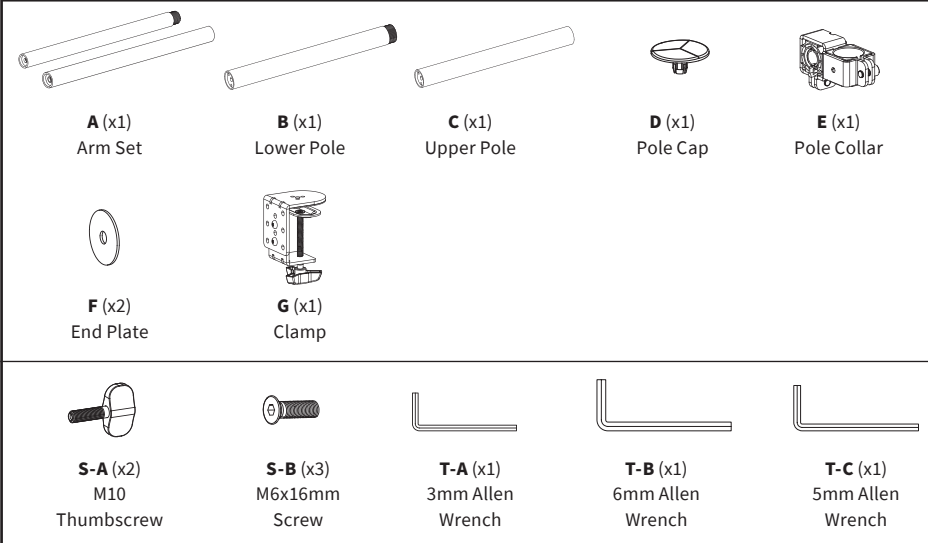
SMALL PARTS - NOT FOR CHILDREN UNDER 3 YEARS. ADULT SUPERVISION IS REQUIRED.

⚠️ TIPOVER WARNING

SERIOUS OR FATAL CRUSHING INJURIES CAN OCCUR FROM TIPOVER. TO HELP PREVENT TIPOVER:

- NEVER ALLOW CHILDREN TO CLIMB, STAND, HANG, OR PLAY ON ANY PART OF MONITOR OR STAND.
 - USE TIPOVER RESTRAINT OR ANCHOR STAND TO WALL.
- USE OF TIPOVER RESTRAINTS MAY ONLY REDUCE, BUT NOT ELIMINATE RISK OF TIPOVER.**

PACKAGE CONTENTS



NOTE: SOME HARDWARE INCLUDED MAY NOT BE USED

TOOLS NEEDED



DO NOT EXCEED WEIGHT CAPACITY.

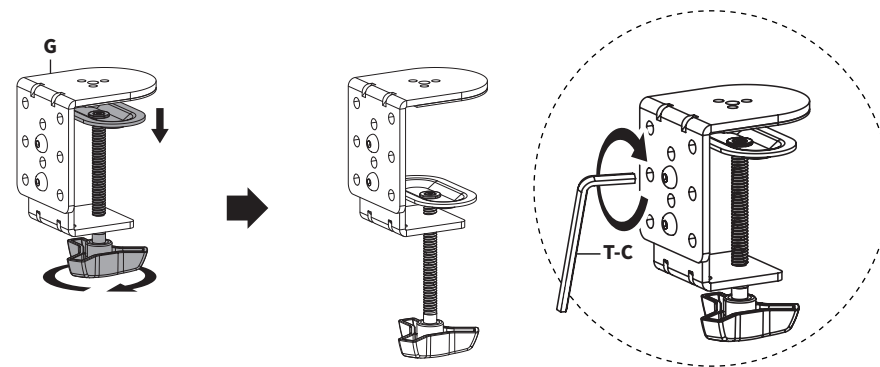
Failure to do so may result in serious injury.



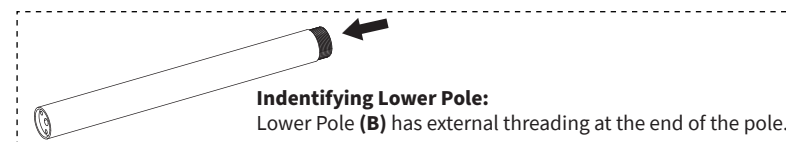
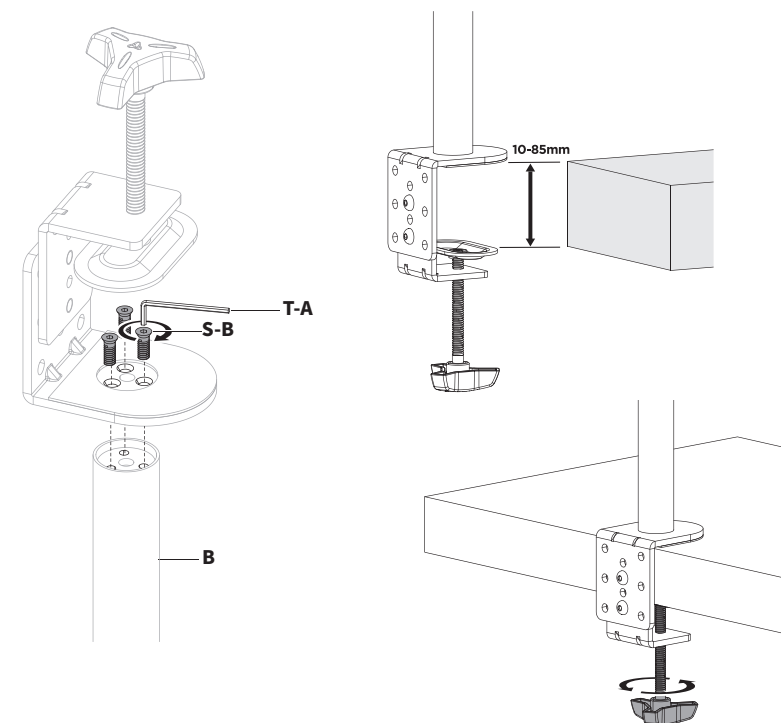
ASSEMBLY STEPS

STEP 1

Loosen clamp knob on Clamp **(G)**. Ensure the screws on the back of Clamp **(G)** are tight using 5mm Allen Wrench **(T-C)**.

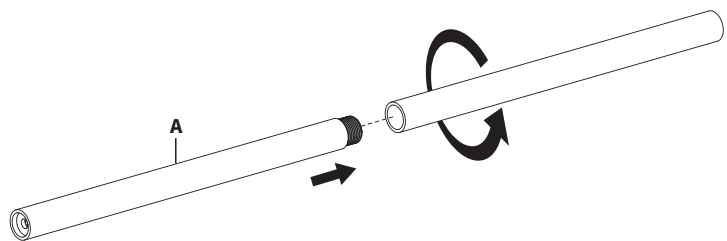


Install Lower Pole **(B)** to Clamp **(G)** using M6x16mm Screws **(S-B)** and 3mm Allen Wrench **(T-A)**. Attach Clamp **(G)** to desktop.

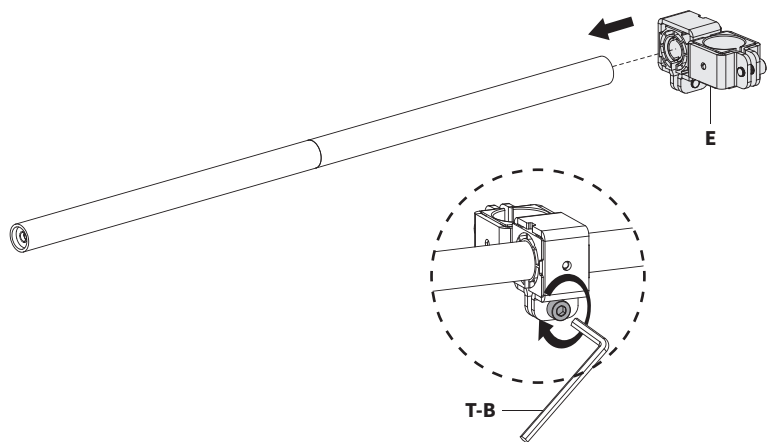


STEP 2

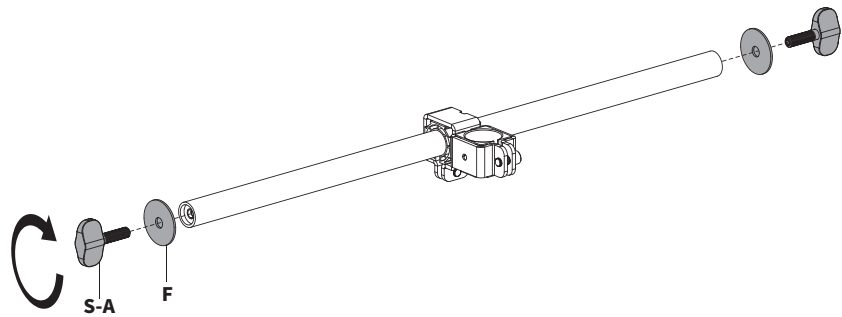
Thread Arm Set **(A)** together, twisting until connection is tight.



Slide Pole Collar **(E)** towards the center arms and tighten using 6mm Allen Wrench **(T-B)**.

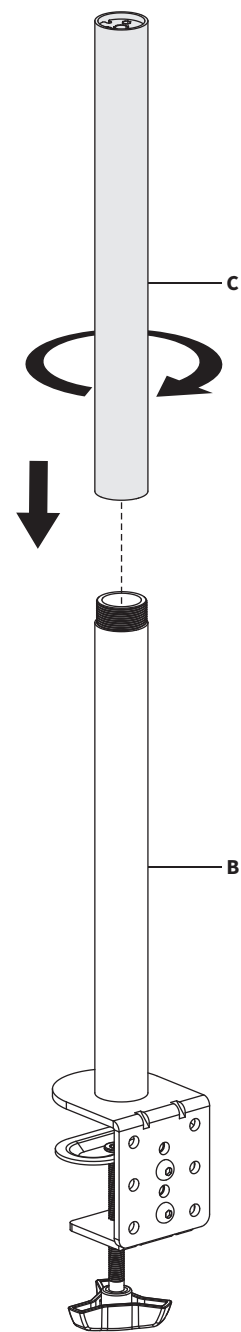


Install End Plates **(F)** to outer edges of arms using Thumbscrews **(S-A)**.



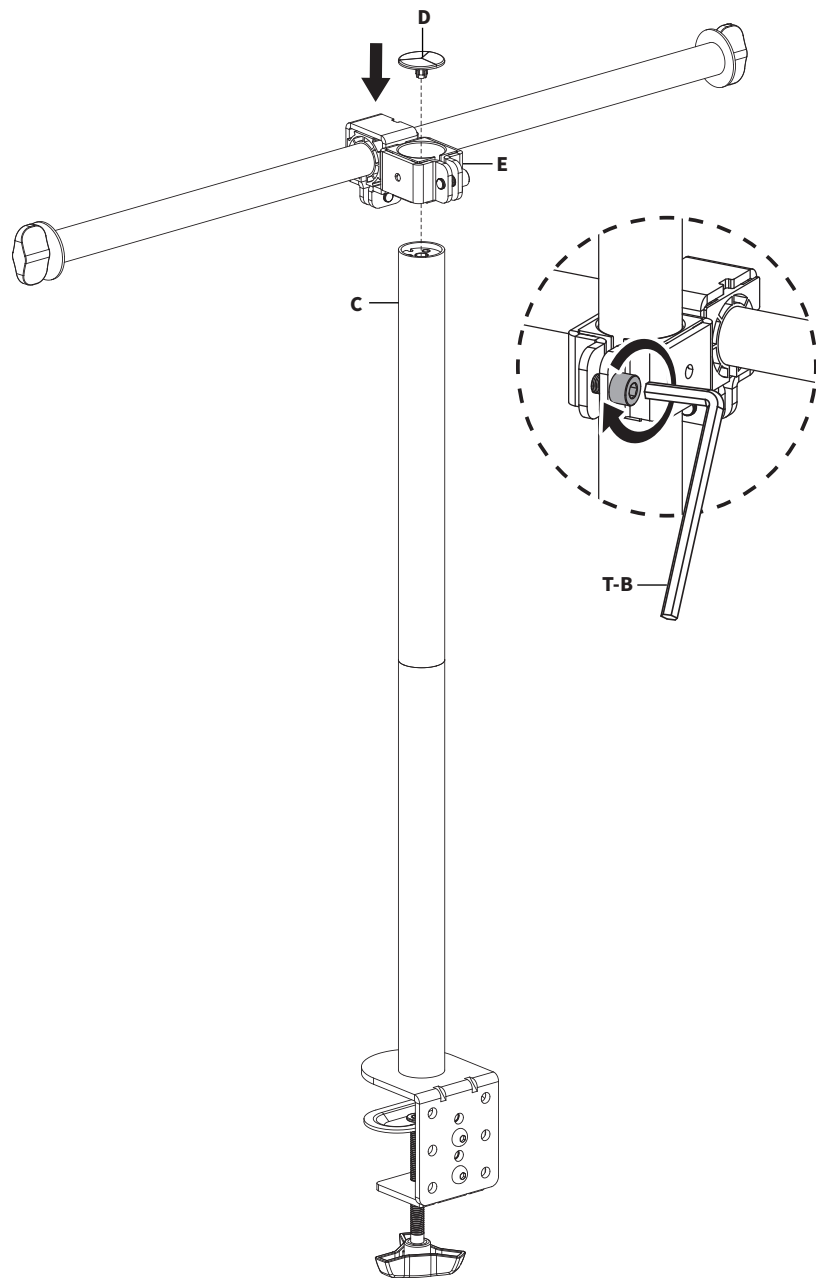
STEP 3

Thread Upper Pole **(C)** onto Lower Pole **(B)**.



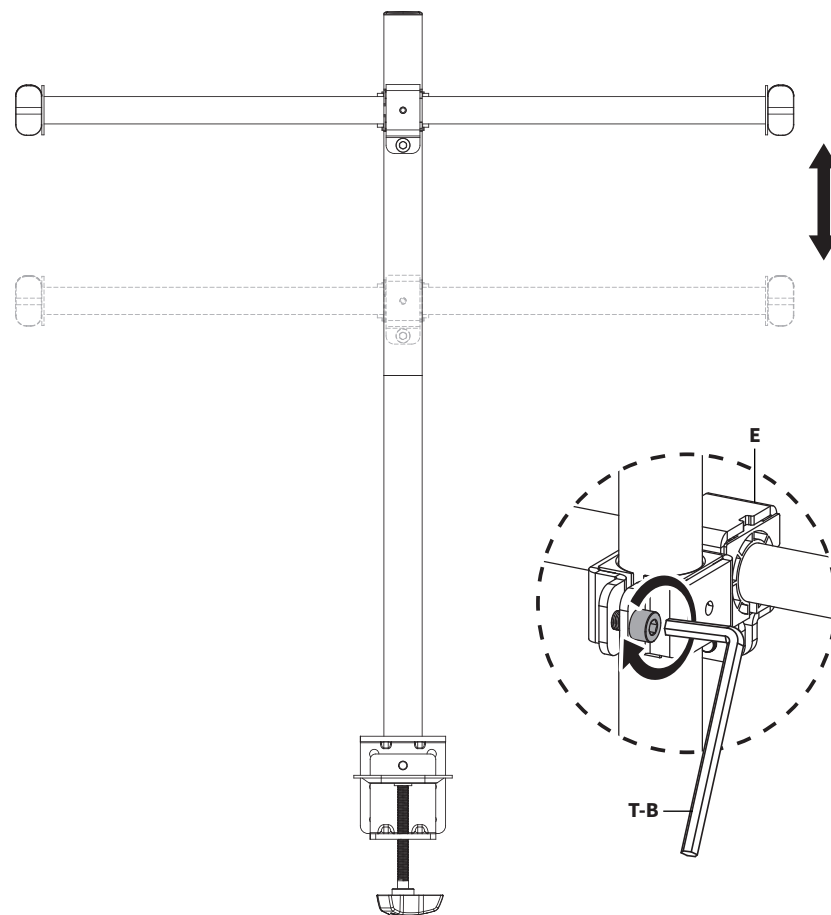
STEP 4


Slide Pole Collar (E) onto Upper Pole (C). Find desired height position and lock into place using 6mm Allen Wrench (T-B). Install Pole Cap (D) onto the top of Upper Pole (C).



HEIGHT ADJUSTMENT

To adjust height of arms, loosen bolt on Pole Collar (E) using 6mm Allen Wrench (T-B). Find desired height position and lock into place using 6mm Allen Wrench again.



 Love your new VIVO setup and want to share?
Tag us in your photo! [@vivo_us](#)


LAST UPDATED: 09/11/2023
REV1



Open **Monday - Friday 7:00am - 7:00pm** CST,
our dedicated support team can offer immediate assistance with rapid response times. If any parts are received damaged or defective, please contact us. We are happy to replace parts to ensure you have a fully functioning product.

 309-278-5303 **AVG. RESOLUTION TIME** (*within office hrs*): **5M 4S**

 www.vivo-us.com **AVG. RESOLUTION TIME** (*within office hrs*): **< 15 M**
Chat live with an agent!

 help@vivo-us.com **AVG. RESPONSE TIME** (*within office hrs*): **1HR 8M**
- 23% within < 15m
- 38% within < 30m
- 61% within < 1hr
- 83% within < 2hr
- 92% within < 3hr

FOR MORE VIVO PRODUCTS, CHECK OUT OUR WEBSITE AT: www.vivo-us.com