

Dual Monitor Wall Mounts + Keyboard Tray Wall Mount

SKU: MOUNT-VWKB2
Instruction Manual

Assembly Video & Product Info
www.vivo-us.com/products/mount-vwkb2



! CAUTION! !

If you do not understand these directions, or if you have any doubts about the safety of the installation, please contact our product support team at 309-278-5303 or help@vivo-us.com for further assistance. Check carefully to make sure there are no missing or defective parts. Improper installation may cause damage or serious injury. Do not use this product for any purpose that is not explicitly specified in this manual. Do not exceed weight capacity. We cannot be liable for damage or injury caused by improper mounting, incorrect assembly or inappropriate use.



WARNING: CHOKING HAZARD

SMALL PARTS - NOT FOR CHILDREN UNDER 3 YEARS. ADULT SUPERVISION IS REQUIRED.



DO NOT EXCEED WEIGHT CAPACITY

FAILURE TO DO SO MAY RESULT IN SERIOUS INJURY.



WARNING: PINCH POINT

DO NOT PLACE HANDS ON OR NEAR SUPPORT BARS. MOVING PARTS CAN CRUSH AND CUT. PINCH POINTS ARE CREATED DURING LIFTING AND LOWERING THE WORK SURFACE. FAILURE TO FOLLOW THESE INSTRUCTIONS MAY RESULT IN SERIOUS PERSONAL INJURY.

We're Here for You

Open **Monday - Friday 7:00am - 7:00pm** CST, our dedicated support team can offer immediate assistance with rapid response times. If any parts are received damaged or defective, please contact us. We are happy to replace parts to ensure you have a fully functioning product.



Give us a Call:
309-278-5303

AVG. RESOLUTION TIME (*within office hrs*): **5M 4S**



Chat Us:
www.vivo-us.com

AVG. RESOLUTION TIME (*within office hrs*): **< 15 M**



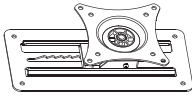
Email Us:
help@vivo-us.com

AVG. RESPONSE TIME (*within office hrs*): **1HR 8M**

- 23% within < 15m
- 38% within < 30m
- 61% within < 1hr
- 83% within < 2hr
- 92% within < 3hr

Monitor Mount

Package Contents



A (x2)
Wall Mount

Included Hardware & Tools



M-A (x8)
M4x12mm Screw



M-B (x8)
M5x12mm Screw



M-C (x8)
M5 Washer

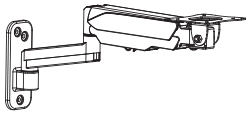


W-D (x8)
ST4x30 Screw



W-E (x8)
Drywall Anchor

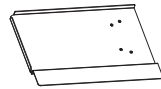
Keyboard Tray



B (x1)
Arm



C (x1)
Left Keyboard
Tray



D (x1)
Right Keyboard
Tray



E (x1)
Keyboard Tray
Bracket



F (x1)
Mouse
Pad



G (x1)
Wrist Pad



J (x3)
Cover

Included Hardware & Tools



S-A (x4)
M4x8mm Screw



S-B (x4)
M4x12mm Screw



S-C (x4)
M4 Nut



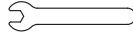
W-A (x3)
ST6.3x55mm Screw



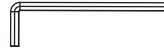
W-B (x3)
Concrete Anchor



W-C (x3)
M6 Washer



T-A (x1)
Wrench



T-B (x1)
6mm Allen Wrench

Tools Needed



**Phillips
Screwdriver**



**Stud
Finder**



Level



Pencil



Drill



**Socket
Wrench**

Weight Capacity



Per Mount



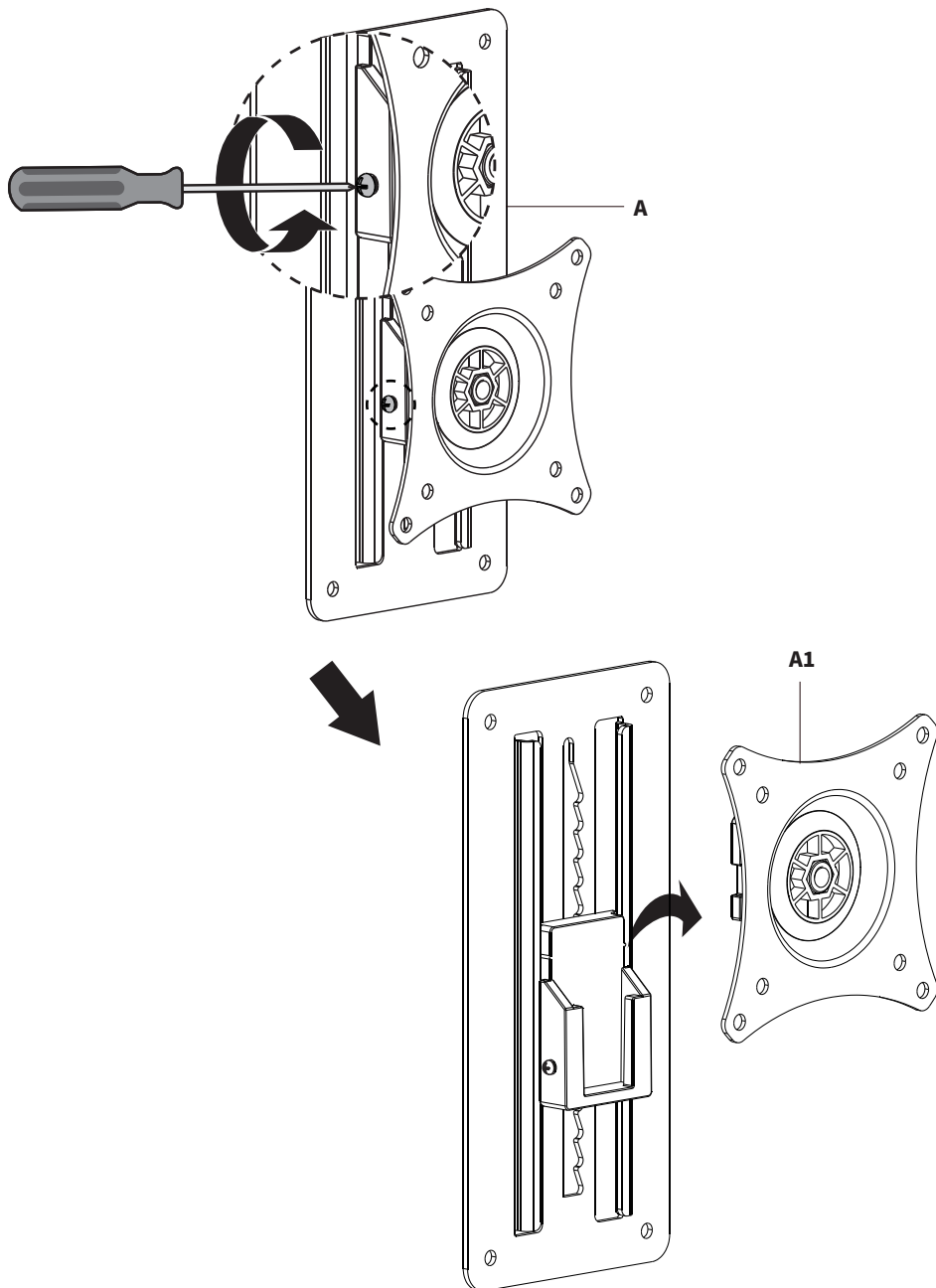
Keyboard Tray

Monitor Mount

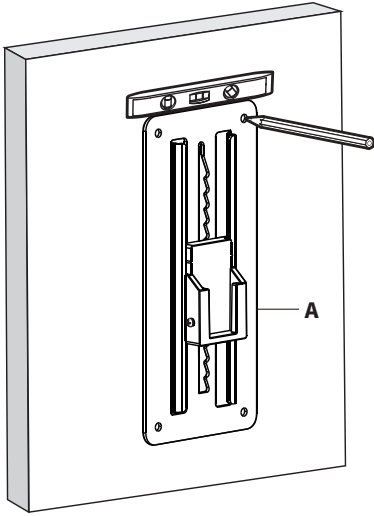
ASSEMBLY STEPS

STEP 1

Loosen the screw on the side of both Wall Mounts (**A**) and slide off VESA Plates (**A1**).



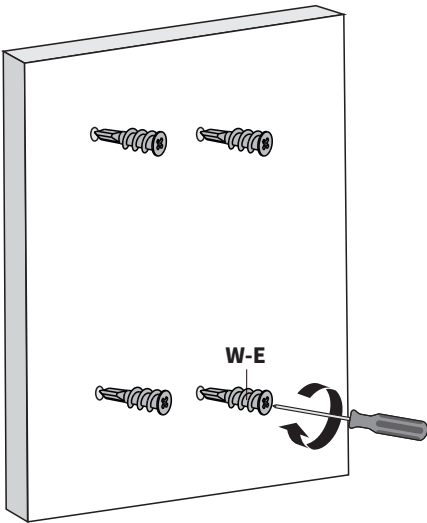
STEP 2



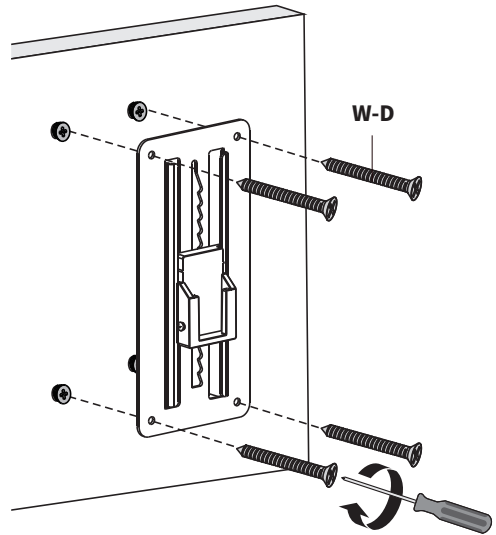
Place Wall Mounts (**A**) in the desired location against the wall and mark drilling locations with a pencil. Use of a level is recommended.

Wood Wall: Drill 1.75" (45mm) deep holes using a 3/32" (2.5mm) drill bit.

Drywall: Drill holes using a 5/16" - 25/64" (8 - 10mm) drill bit.

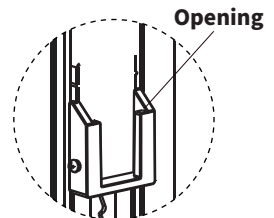


Thread Drywall Anchors (**W-E**) into the holes using a Phillips screwdriver.



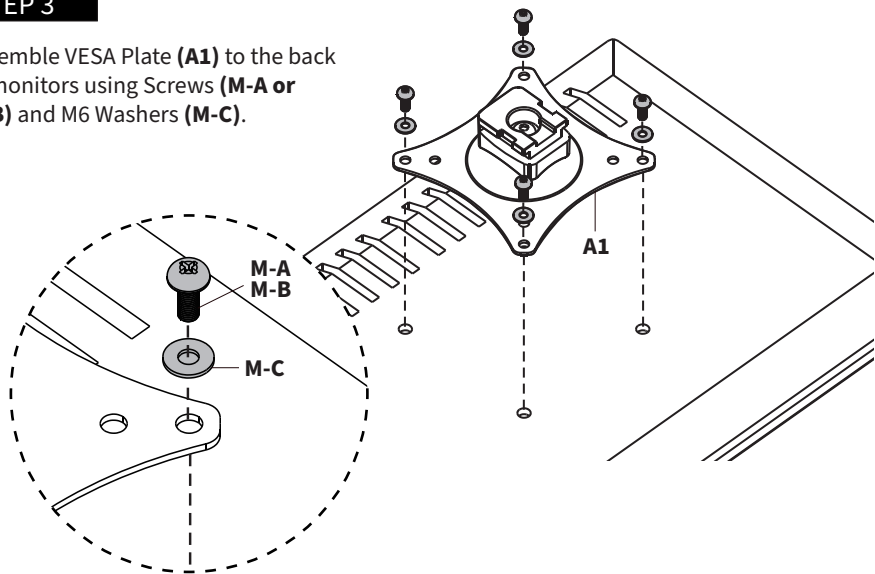
Secure Wall Mounts (**A**) using ST4x30mm Screws (**W-D**).

NOTE: Ensure the **Opening** in the adjustable support is facing up.



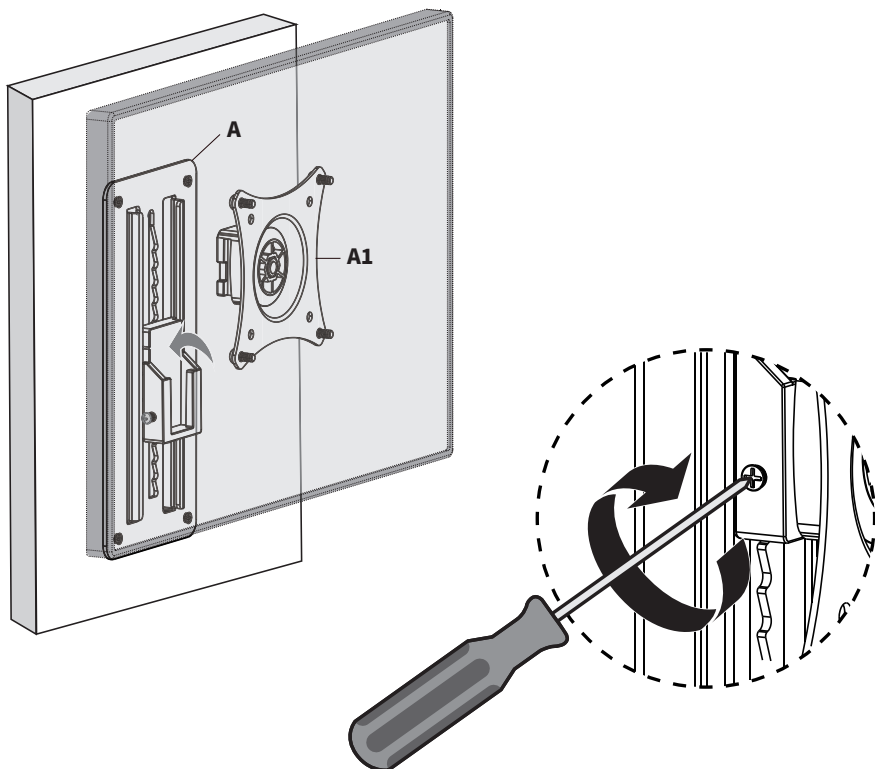
STEP 3

Assemble VESA Plate (**A1**) to the back of monitors using Screws (**M-A** or **M-B**) and M6 Washers (**M-C**).



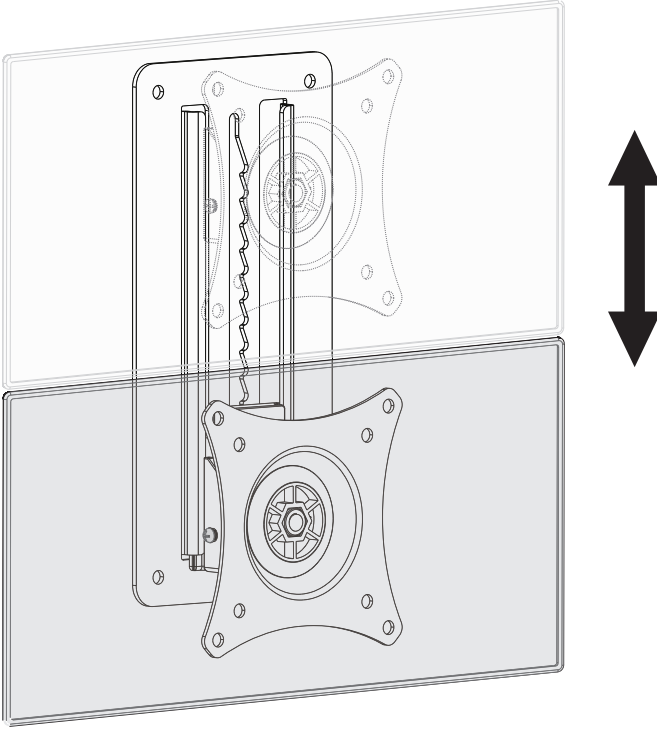
STEP 4

Slide VESA Plate (**A1**) back into Wall Mount (**A**) and secure by retightening the screw.



STEP 5

Raise monitors by lifting up. To lower, raise it up to the highest setting, then slowly lower it.

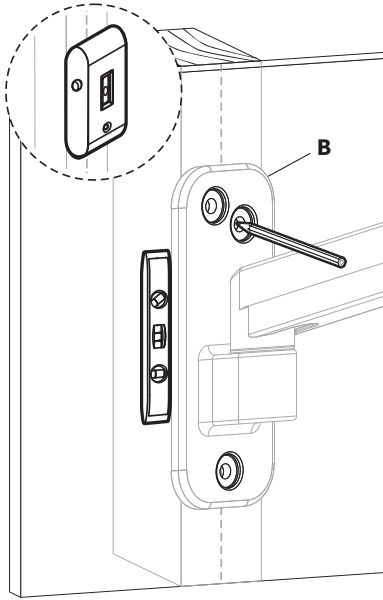


Keyboard Tray

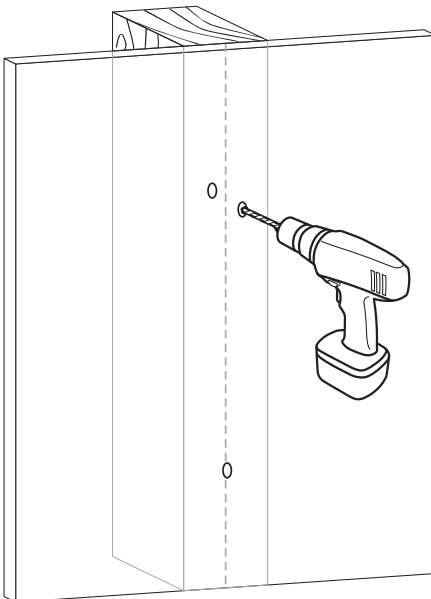
ASSEMBLY STEPS

STEP 1

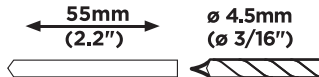
Wood Stud Installation



Use Arm (B) to mark mounting locations. Use of a level and stud finder is recommended.

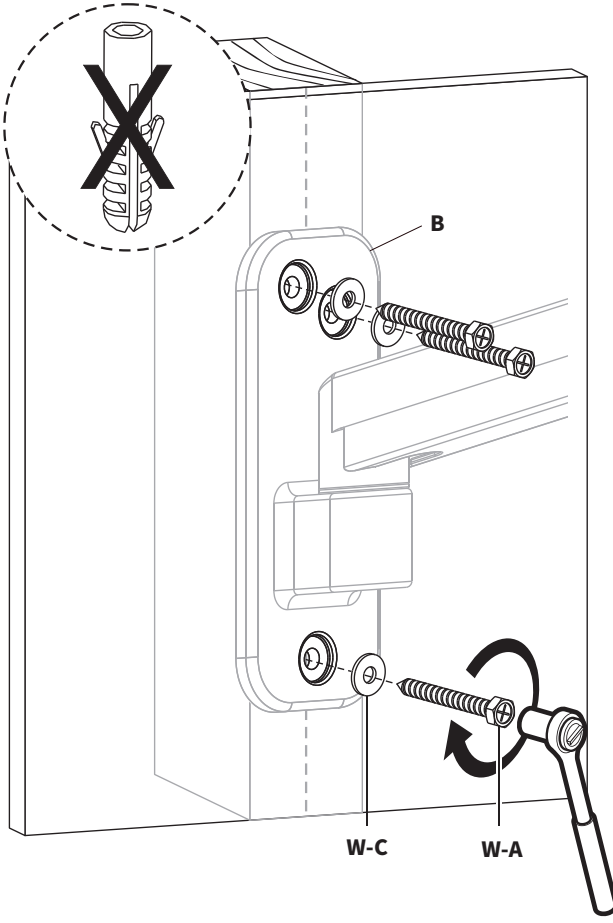


Using a 3/16" (4.5mm) bit, drill holes 2.2" (55mm) deep.



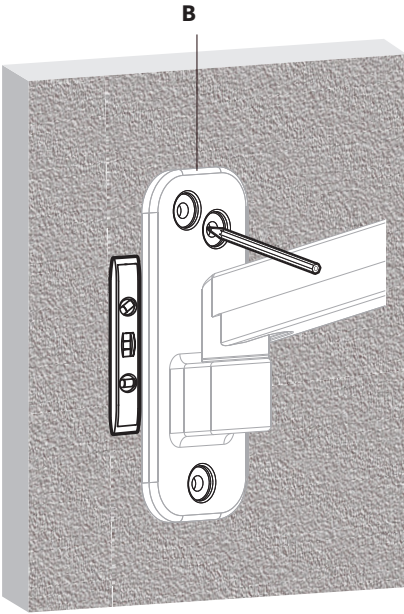
Wood Wall - Cont'D

Secure Arm **(B)** to the wall using ST6.3x55mm Screws **(W-A)** and M6 Washers **(W-C)**.

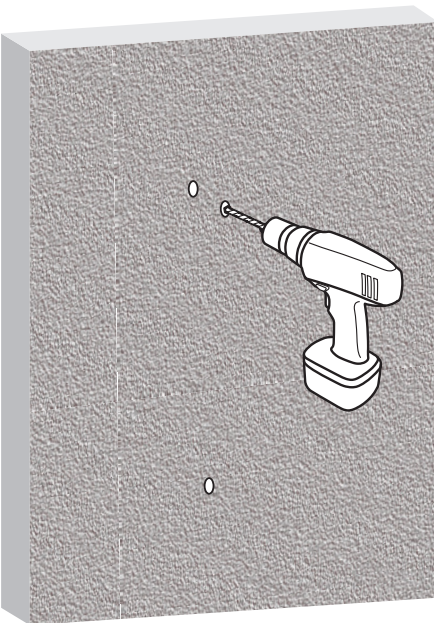


**Proceed to
Step 2 on
Page 12**

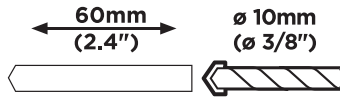
Brick/Concrete



Use Arm **(B)** to mark mounting locations.
Use of a level is recommended.

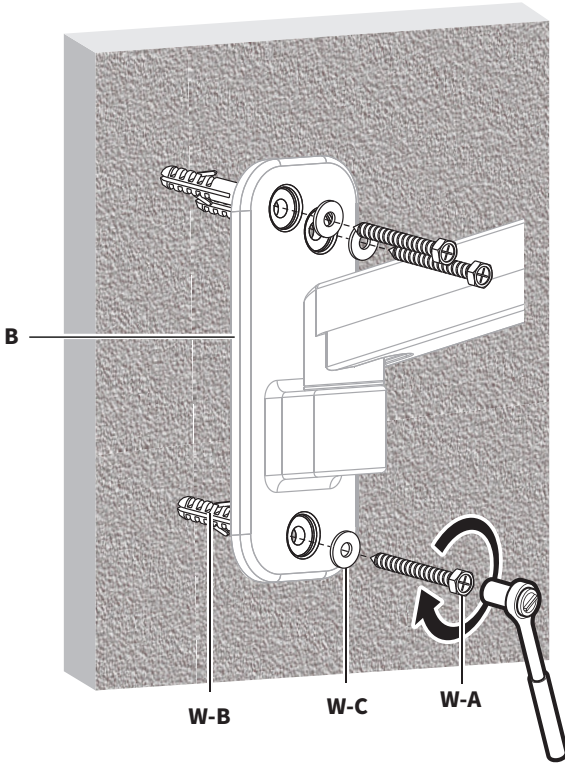


Using a 3/8" (10mm) bit, drill holes 2.4"
(60mm) deep.



Brick/Concrete - Cont'D

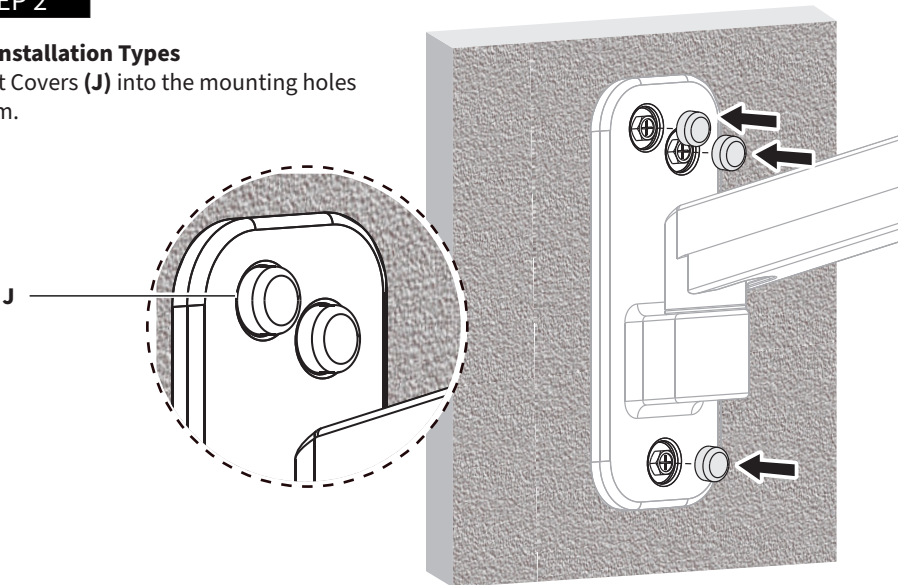
Insert Concrete Anchors (**W-B**) into holes. Secure Arm (**B**) to the wall using ST6.3x55mm Screws (**W-A**) and M6 Washers (**W-C**).



STEP 2

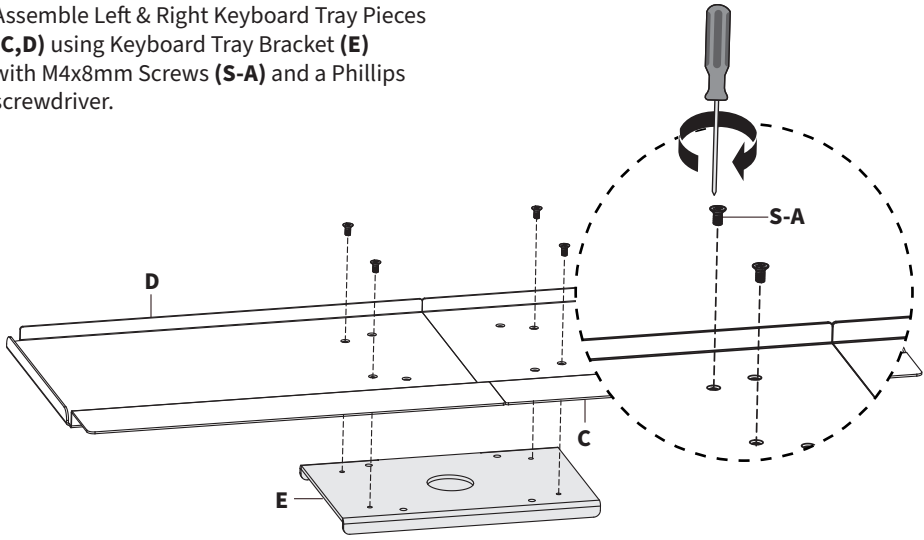
ALL installation Types

Insert Covers (**J**) into the mounting holes in Arm.

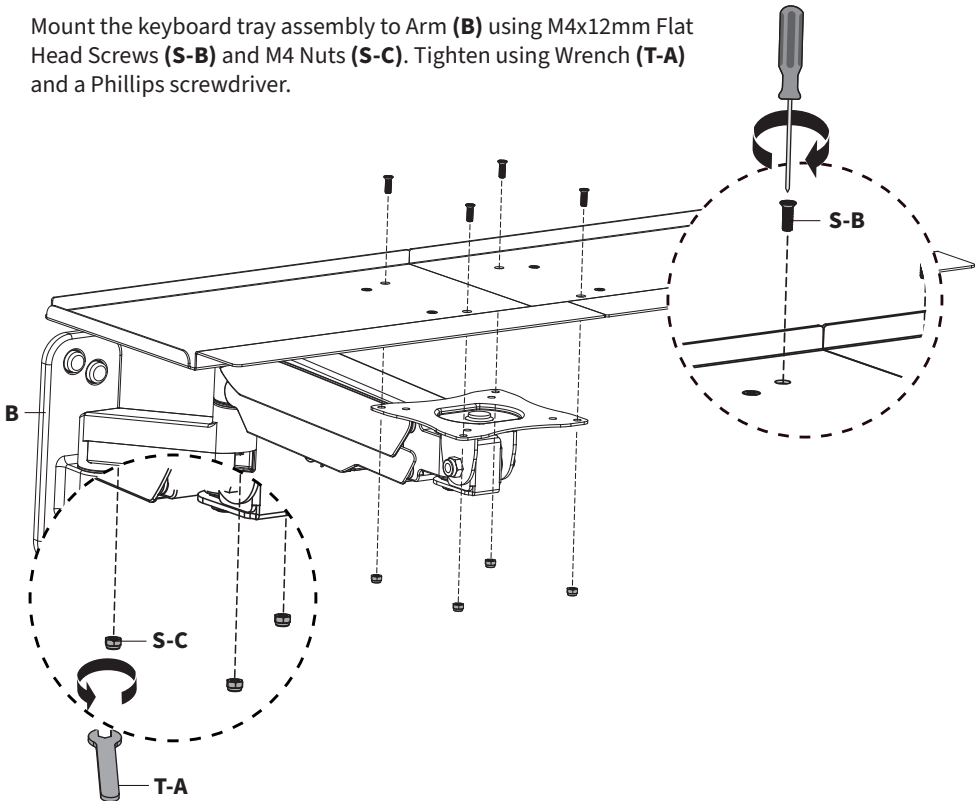


STEP 3

Assemble Left & Right Keyboard Tray Pieces (**C,D**) using Keyboard Tray Bracket (**E**) with M4x8mm Screws (**S-A**) and a Phillips screwdriver.

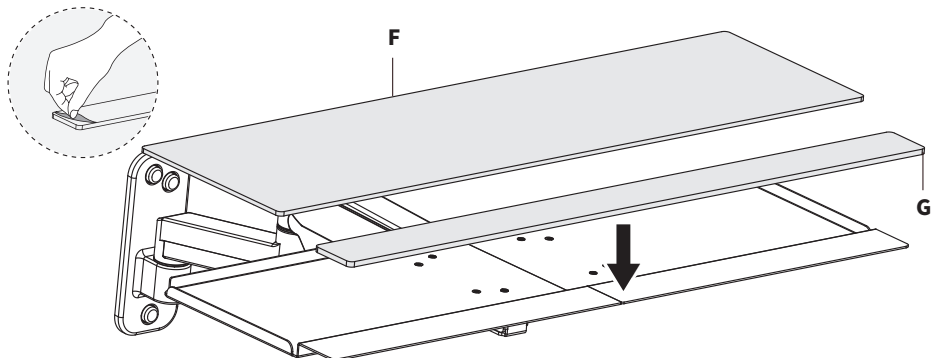


Mount the keyboard tray assembly to Arm (**B**) using M4x12mm Flat Head Screws (**S-B**) and M4 Nuts (**S-C**). Tighten using Wrench (**T-A**) and a Phillips screwdriver.



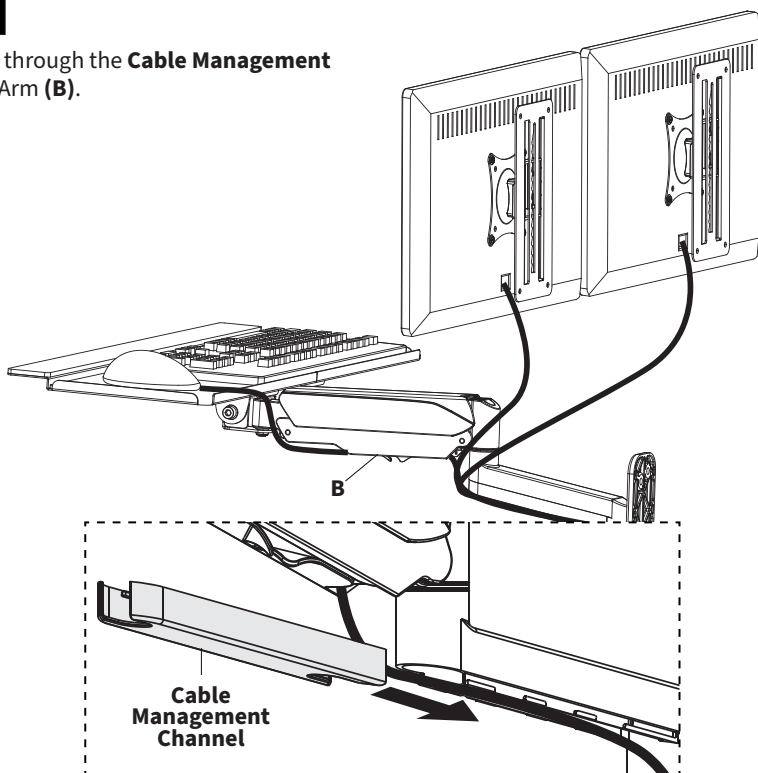
STEP 4

Remove the adhesive backing from Wrist Pad (**G**) and place it assembled keyboard tray along with Mouse Pad (**F**).



STEP 5

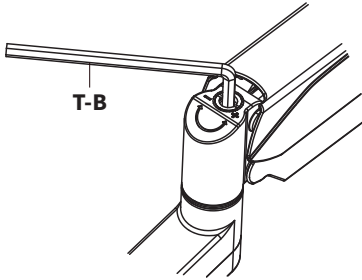
Route cables through the **Cable Management Channels** in Arm (**B**).



Height Adjustment

1 Position Arm

Position the arm at desired height and firmly hold in place.



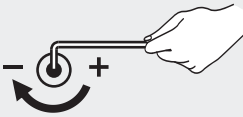
2 Insert 6mm Allen Wrench (T-B) Into Adjustment Screw

Insert the 6mm Allen Wrench (T-B) in to the adjustment screw on the back of the monitor arm.

3 Turn 10-20x to Set Monitor Height

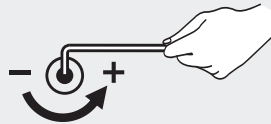
Turn 6mm Allen Wrench (T-B) 10-20 times to obtain proper support for your monitor. Use the guide below to adjust the tension according to the amount of counterbalance needed to support the monitor.

Clockwise:
Decrease Support
[if arm will not lower]



Turn the adjustment screw **clockwise** to **decrease** the support for your monitor, allowing it to be lowered.

Counter-Clockwise
Increase Support
[if arm will not raise]

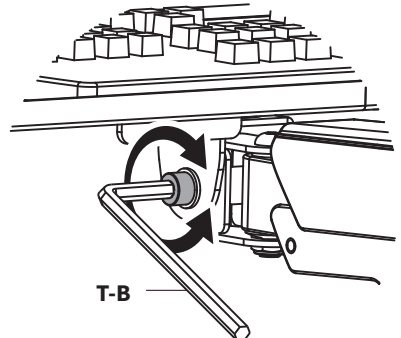


Turn the adjustment screw **counter-clockwise** to **increase** the support for your monitor, allowing it to be raised up.

Note: Requires 10-20 Turns

Adjust Tilt Angle

Adjust the tilt of the keyboard using 6mm Allen Wrench (T-B).





Need Help? Get In Touch

Monday-Friday from 7:00am-7:00pm CST



help@vivo-us.com



www.vivo-us.com

Chat live with an agent!



309-278-5303



VIVO-us @vivo_us