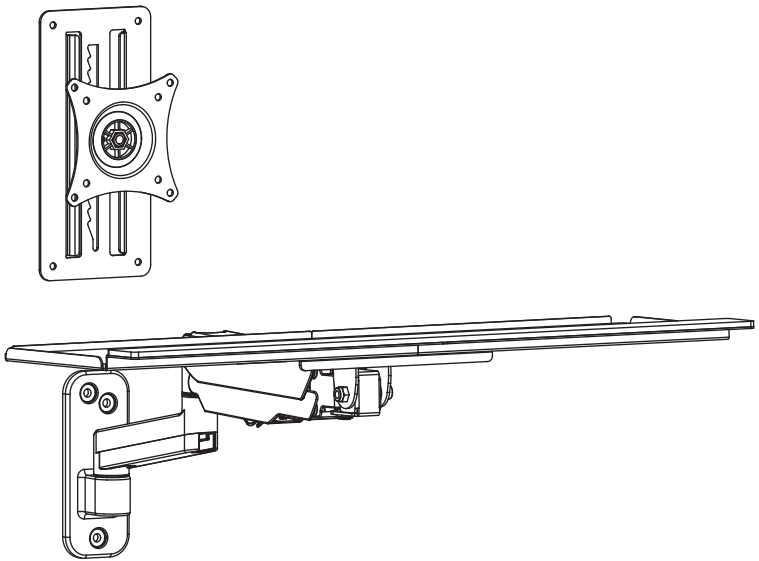




## Single Monitor Wall Mount + Keyboard Tray Wall Mount

### Instruction Manual



**SKU: MOUNT-VWKB1**



Scan the QR code with your mobile device or follow the link for helpful videos and specifications related to this product.

**<https://vivo-us.com/products/mount-vwkb1>**

**GET IN TOUCH** | Monday-Friday from 7:00am-7:00pm CST



[help@vivo-us.com](mailto:help@vivo-us.com)



[www.vivo-us.com](https://www.vivo-us.com)  
*Chat live with an agent!*



309-278-5303



## WARNING!

If you do not understand these directions, or if you have any doubts about the safety of the installation, please call a qualified technician. Check carefully to make sure there are no missing or defective parts. Improper installation may cause damage or serious injury. Do not use this product for any purpose that is not explicitly specified in this manual. Do not exceed weight capacity. We cannot be liable for damage or injury caused by improper mounting, incorrect assembly or inappropriate use.



## TIPOVER WARNING

SERIOUS OR FATAL CRUSHING INJURIES CAN OCCUR FROM TIPOVER. TO HELP PREVENT TIPOVER:

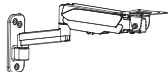
- NEVER ALLOW CHILDREN TO CLIMB, STAND, HANG, OR PLAY ON ANY PART OF TV OR TV CART.
- USE TIPOVER RESTRAINT OR ANCHOR STAND TO WALL

**USE OF TIPOVER RESTRAINTS MAY ONLY REDUCE, BUT NOT ELIMINATE RISK OF TIPOVER.**

## PACKAGE CONTENTS



**A (x1)**  
Wall Mount



**B (x1)**  
Arm



**C (x1)**  
Keyboard Tray



**D (x1)**  
Keyboard Tray  
Bracket



**E (x1)**  
Mouse Pad



**F (x1)**  
Wrist Pad



**G (x3)**  
Cover



**S-A (x4)**  
M4x8mm Screw



**S-B (x4)**  
M4x12mm Flat  
Head Screw



**S-C (x4)**  
M4 Nut



**M-A (x4)**  
M4x12mm Screw



**M-B (x4)**  
M5x12mm Screw



**M-C (x4)**  
M5 Washer



**W-A (x3)**  
ST6.3x55mm  
Screw



**W-B (x3)**  
Concrete Anchor



**W-C (x3)**  
M6 Washer



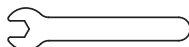
**W-D (x4)**  
ST4x30mm Screw



**W-E (x4)**  
Drywall Anchor



**T-A (x1)**  
6mm Allen Wrench



**T-B (x1)**  
Wrench

**NOTE: SOME HARDWARE INCLUDED MAY NOT BE USED**

**DO NOT EXCEED WEIGHT CAPACITY.**

Failure to do so may result in serious injury.



Mount



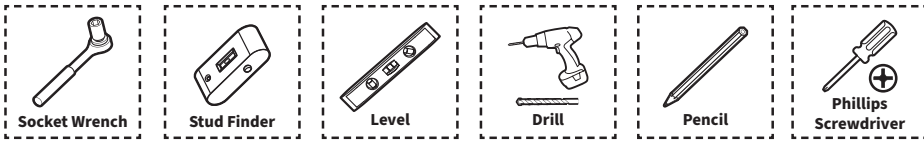
Keyboard Tray



## WARNING: CHOKING HAZARD

SMALL PARTS - NOT FOR CHILDREN UNDER 3 YEARS. ADULT SUPERVISION IS REQUIRED.

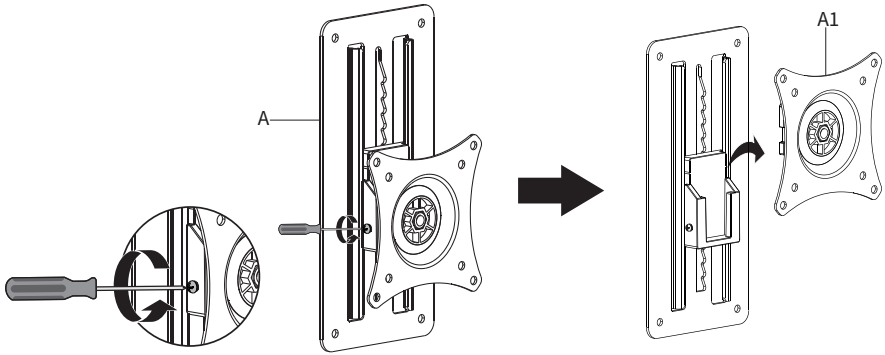
## TOOLS NEEDED



## ASSEMBLY STEPS

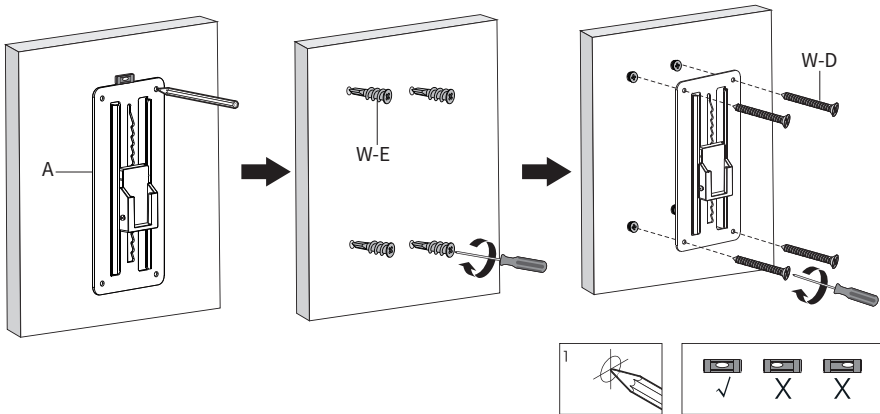
### STEP 1

Loosen the screw on Wall Mount **(A)** and slide off VESA Plate **(A1)**.



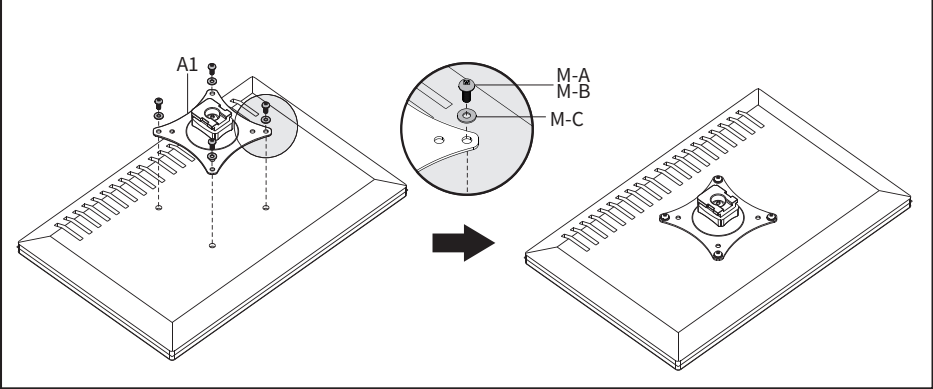
### STEP 2

Place Wall Mount **(A)** against the wall at the desired location and mark drilling locations with a pencil. Use of a level is recommended. If mounting to wood, drill 1.75" (45mm) deep holes using a 3/32" (2.5mm) drill bit. For drywall, drill holes using a 5/16" - 25/64" (8 - 10mm) drill bit, then thread Drywall Anchors **(W-E)** into the holes using a Phillips screwdriver. Mount the wall bracket using the ST4x30mm Screws **(W-D)**, making sure the opening in the adjustable support is facing up.



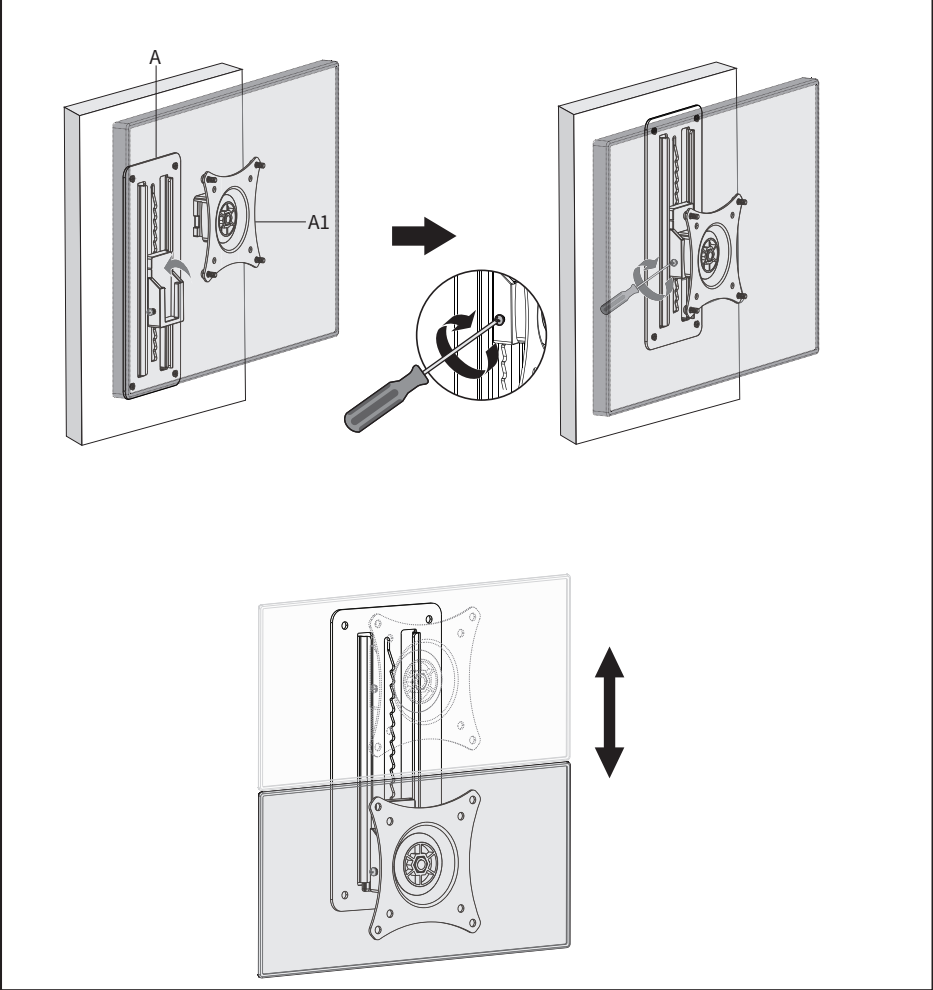
STEP 3

Assemble VESA Plate **(A1)** to the back of the monitor using Screws **(M-A or M-B)** and M5 Washers **(M-C)**.



STEP 4

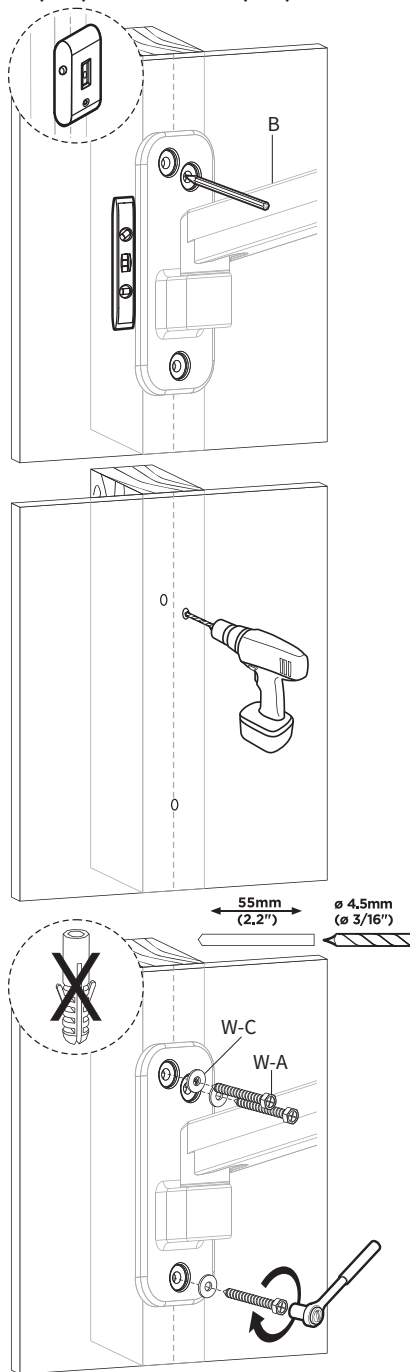
Slide VESA Plate **(A1)** back into Wall Mount **(A)** and secure by retightening the screw. Raise the monitor by lifting up. To lower the monitor, raise it up to the highest setting, then slowly lower it.



## STEP 5

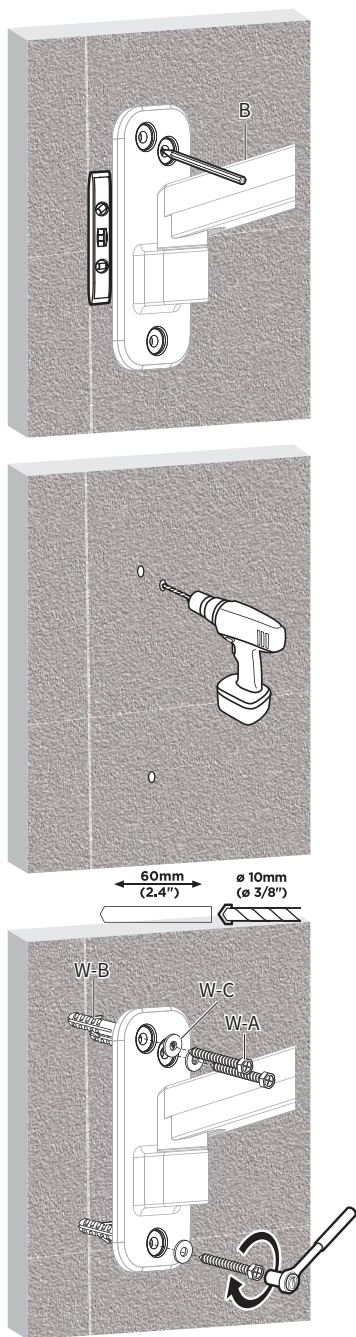
### Wood Stud Installation

Use Arm **(B)** to mark mounting locations. Use of a level and stud finder is recommended. Using a 3/16" (4.5mm) bit, drill holes 2.2" (55mm) deep. Secure Arm **(B)** to the wall using ST6.3x55mm Screws **(W-A)** and M6 Washers **(W-C)**.

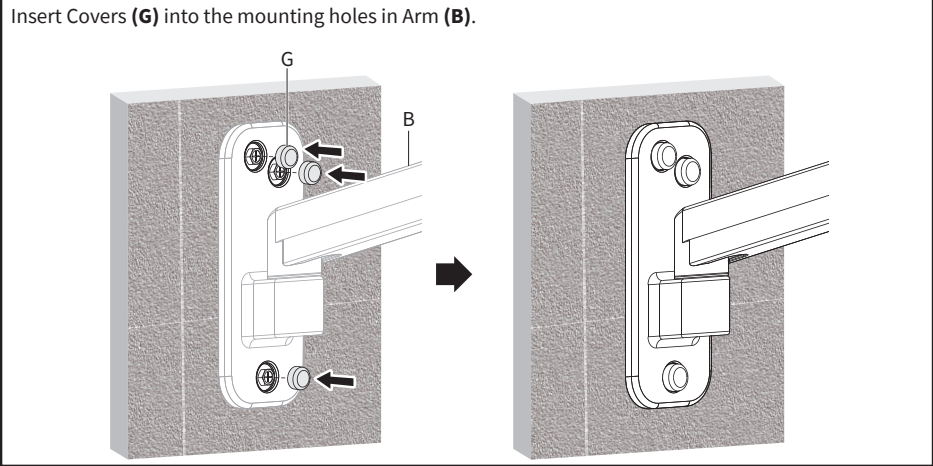


### Brick/Concrete Installation

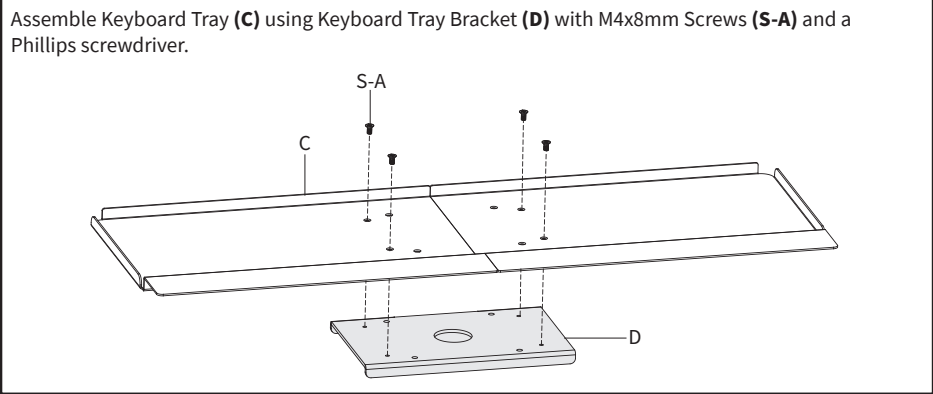
Use Arm **(B)** to mark mounting locations. Using a 3/8" (10mm) bit, drill holes 2.4" (60mm) deep. Insert Concrete Anchors **(W-B)** into holes. Secure Arm **(B)** to the wall using ST6.3x55mm Screws **(W-A)** and M6 Washers **(W-C)**.



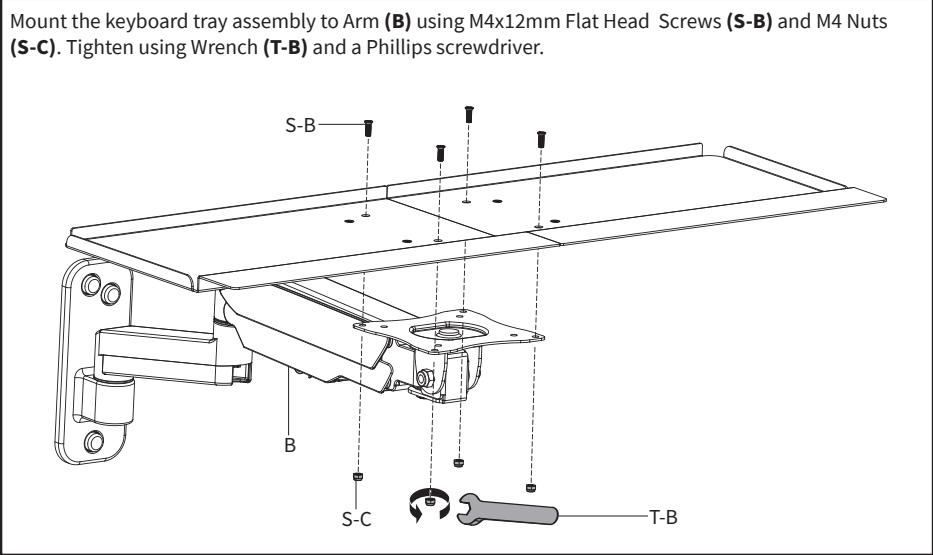
STEP 6



STEP 7

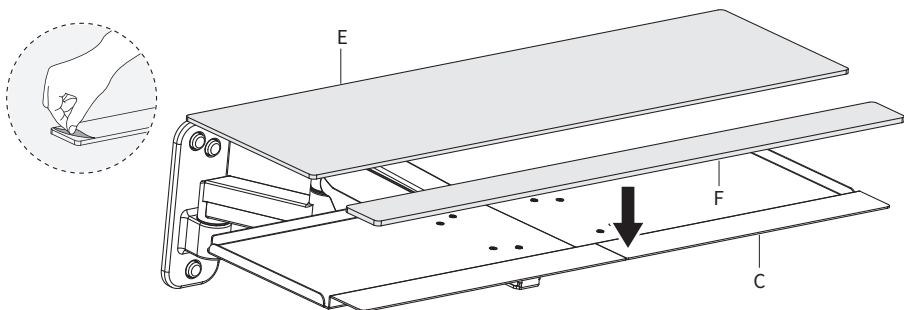


STEP 8



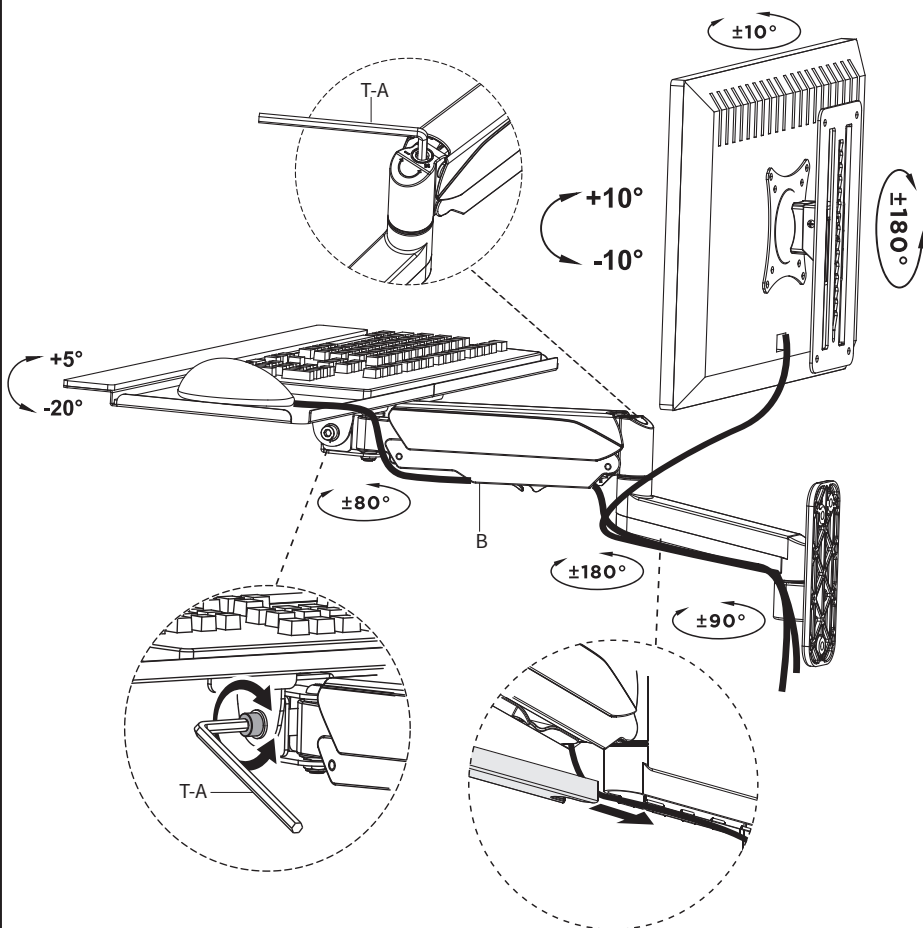
## STEP 9

Remove the adhesive backing from Wrist Pad (**F**) and place it on Keyboard Tray (**C**) along with Mouse Pad (**E**).



## STEP 10

Route cables through the cable management channels in Arm (**B**). Adjust the tilt of Arm (**B**) using 6mm Allen Wrench (**T-A**). Adjust gas spring support in Arm (**B**) using 6mm Allen wrench (**T-A**), turning counter-clockwise increases support, and clockwise decreases.





Love your new VIVO setup and want to share?  
Tag us in your photo! **@vivo\_us**

LAST UPDATED: 08/31/2022  
REV1



Open **Monday - Friday 7:00am - 7:00pm CST**,  
our dedicated support team can offer immediate assistance with rapid response times. If any  
parts are received damaged or defective, please contact us. We are happy to replace parts to  
ensure you have a fully functioning product.



309-278-5303

**AVG. RESOLUTION TIME** (*within office hrs*): **5M 4S**



[www.vivo-us.com](https://www.vivo-us.com)  
*Chat live with an agent!*

**AVG. RESOLUTION TIME** (*within office hrs*): **< 15 M**



[help@vivo-us.com](mailto:help@vivo-us.com)

**AVG. RESPONSE TIME** (*within office hrs*): **1HR 8M**

- 23% within < 15m
- 38% within < 30m
- 61% within < 1hr
- 83% within < 2hr
- 92% within < 3hr

FOR MORE VIVO PRODUCTS, CHECK OUT OUR WEBSITE AT: [www.vivo-us.com](https://www.vivo-us.com)