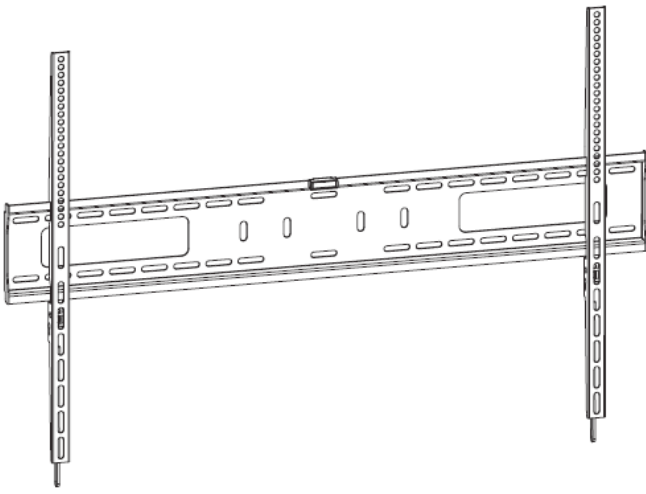


Flat Panel TV Wall Mount Bracket

Instruction Manual



SKU: MOUNT-VW100F



Scan the QR code with your mobile device or follow the link for helpful videos and specifications related to this product.

<https://vivo-us.com/products/mount-vw100f>



help@vivo-us.com



www.vivo-us.com

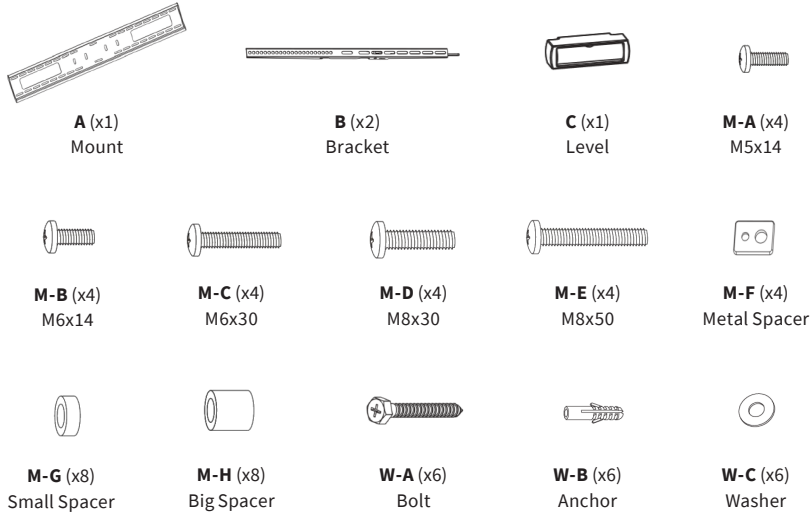


1-800-371-5654

! WARNING!

If you do not understand these directions, or if you have any doubts about the safety of the installation, please call a qualified technician. Check carefully to make sure there are no missing or defective parts. Improper installation may cause damage or serious injury. Do not use this product for any purpose that is not explicitly specified in this manual. Do not exceed weight capacity. We cannot be liable for damage or injury caused by improper mounting, incorrect assembly or inappropriate use.

PACKAGE CONTENTS

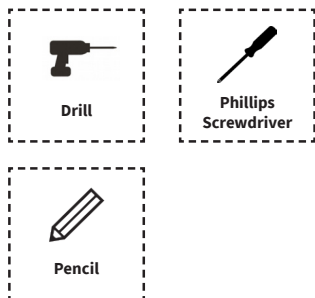


NOTE: NOT ALL HARDWARE INCLUDED WILL BE USED

! CAUTION!

DO NOT INSTALL INTO DRYWALL ALONE. VERIFY YOUR WALL CONSTRUCTION. USE WOOD STUDS TO MOUNT. We include mounting for brick and concrete walls. If unsure, please contact us at vivo-us.com, email at help@vivo-us.com, or call us at 1-800-371-5654.

TOOLS NEEDED



DO NOT EXCEED WEIGHT CAPACITY.

Failure to do so may result in serious injury.

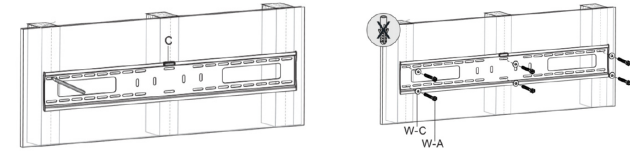


ASSEMBLY STEPS

STEP 1

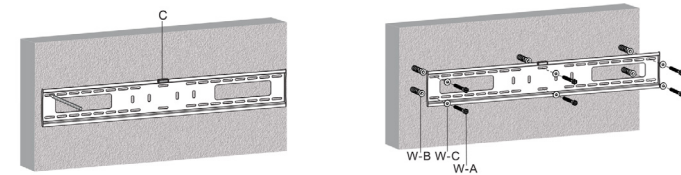
OPTION A: Wood Wall

Use mount (A) with level (C) to mark mounting holes on wall where studs are located. Using a 1/4" bit, drill 3.5" into wall. Install mount using bolts (W-A) and washers (W-C).



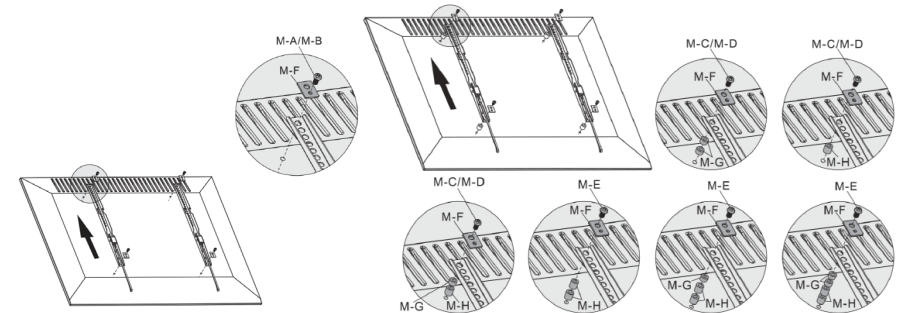
OPTION B: Concrete/Brick Wall

Use mount (A) with level (C) to mark mounting holes on wall. Using a 1/2" bit, drill 3.7" into wall. Insert anchors (W-B) into holes and use bolts (W-A) and washers (W-C) to install mount.



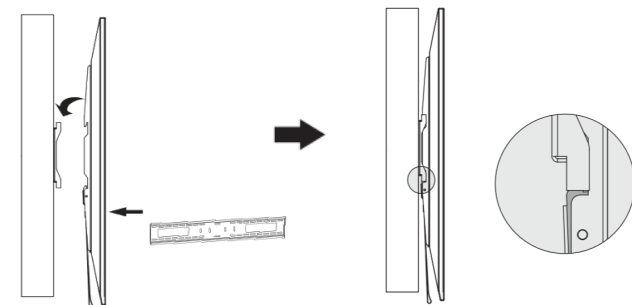
STEP 2

Mount brackets (B) to back of television using bolts (M-A, M-B, M-C) and metal spacer (M-F). Make sure straps are towards bottom of TV. If bolts are too long, spacers (M-H, M-G) may be required.



STEP 3

Attach TV to mount (A) as shown in diagram. Make sure bottom of brackets (B) are attached securely. **NOTE:** To remove, pull both straps down and lift television off of mount (A).





Love your new VIVO setup and want to share?

Tag us in your photo! **@vivo_us**

Last Updated: 10/16/2018



If any parts are received damaged or defective, please contact us. We are happy to replace parts to ensure you have a fully functioning product.



help@vivo-us.com



www.vivo-us.com



1-800-371-5654

For more VIVO products, check out our website at:
www.vivo-us.com.