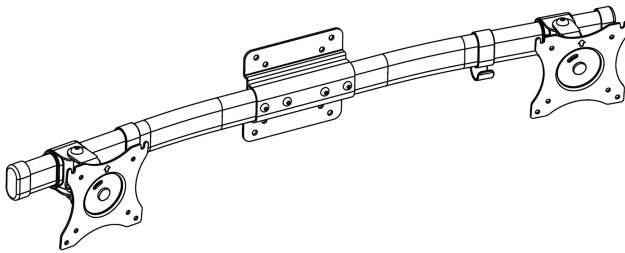




VESA Adapter Bracket for 2 Monitor Screens

Instruction Manual



SKU: MOUNT-VW02A



Scan the QR code with your mobile device or follow the link for helpful videos and specifications related to this product.

<https://vivo-us.com/products/mount-vw02a>

GET IN TOUCH | Monday-Friday from 7:00am-7:00pm CST



help@vivo-us.com



www.vivo-us.com
Chat live with an agent!



309-278-5303



WARNING!

If you do not understand these directions, or if you have any doubts about the safety of the installation, please call a qualified technician. Check carefully to make sure there are no missing or defective parts. Improper installation may cause damage or serious injury. Do not use this product for any purpose that is not explicitly specified in this manual. Do not exceed weight capacity. We cannot be liable for damage or injury caused by improper mounting, incorrect assembly or inappropriate use.



WARNING: CHOKING HAZARD

SMALL PARTS - NOT FOR CHILDREN UNDER 3 YEARS. ADULT SUPERVISION IS REQUIRED.

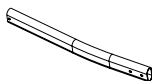
PACKAGE CONTENTS



A (x2)
VESA Bracket



B (x1)
Bracket



C (x2)
Arm



D (x1)
Bracket



E (x2)
Cable Clip



F (x2)
End Cap



G (x2)
Bolt



H (x4)
M6x30



I (x1)
4mm Allen
Key



J (x1)
6mm Allen
Key



M-A (x8)
M4x12



M-B (x12)
M5x12



M-C (x12)
D5 Washer



M-D (x4)
M5 Nut



W-A (x4)
Screw



W-B (x4)
Anchor



W-C (x4)
Washer

TOOLS NEEDED



Drill



Phillips
Screwdriver

NOTE: SOME HARDWARE MAY NOT BE USED

DO NOT EXCEED WEIGHT CAPACITY.

Failure to do so may result in serious injury.



PER ARM



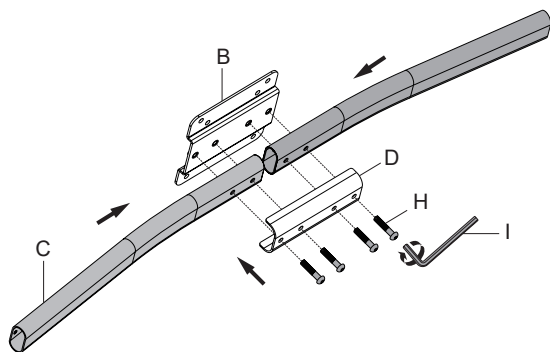
CAUTION!

DO NOT INSTALL INTO DRYWALL ALONE. VERIFY YOUR WALL CONSTRUCTION. USE WOOD STUDS TO MOUNT. We include mounting for brick and concrete walls. If unsure, please contact us at vivo-us.com, email at help@vivo-us.com, or call us at 309-278-5303.

ASSEMBLY STEPS

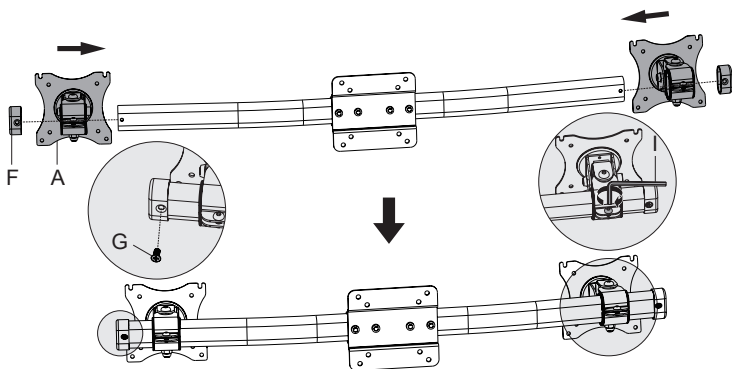
STEP 1

Attach arms **(C)** to brackets **(B)** and **(D)** using bolts **(H)** and 4mm allen key **(I)** as shown in diagram.



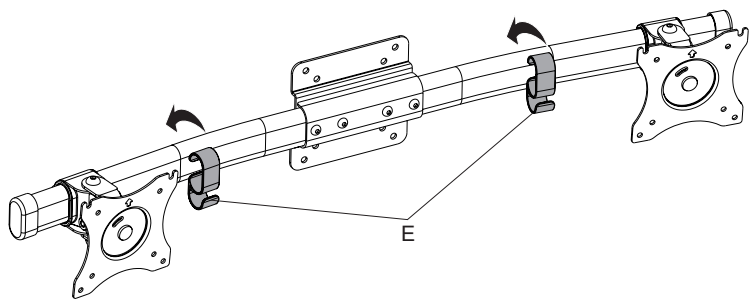
STEP 2

Slide VESA brackets **(A)** onto arms **(C)**. Attach end caps **(F)** to arms and secure using bolts **(G)**. Secure VESA brackets **(A)** using 4mm allen key **(I)**.



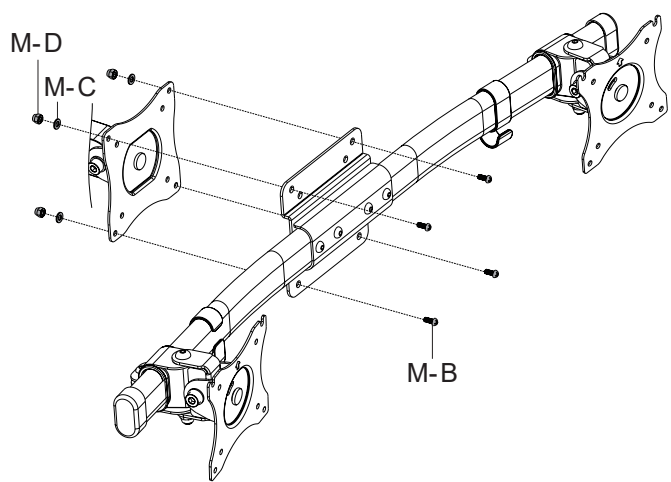
STEP 3

Attach cable clips (**E**).



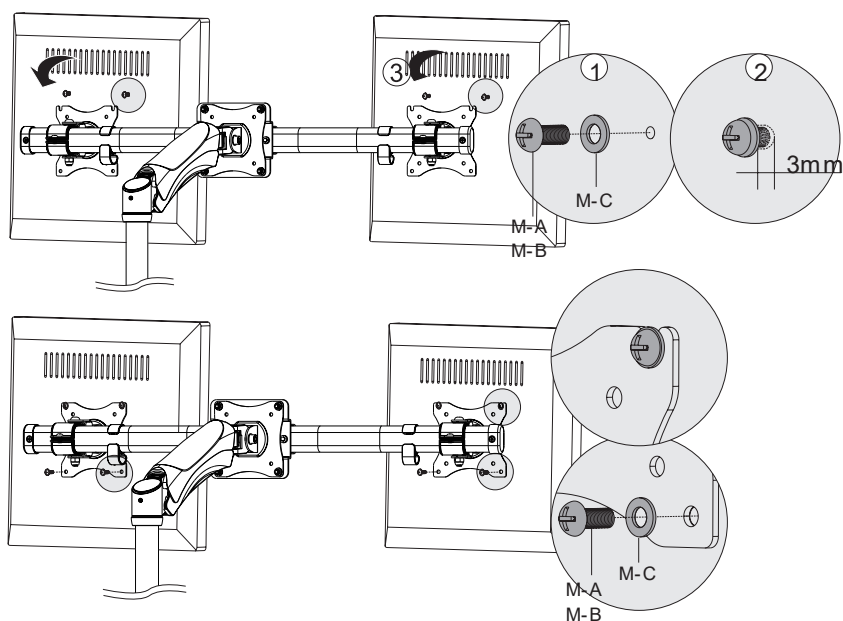
STEP 4A-1

Secure assembly to existing VESA plate using bolts (**M-B**) washers (**M-C**) and nuts (**M-D**) as shown in diagram.



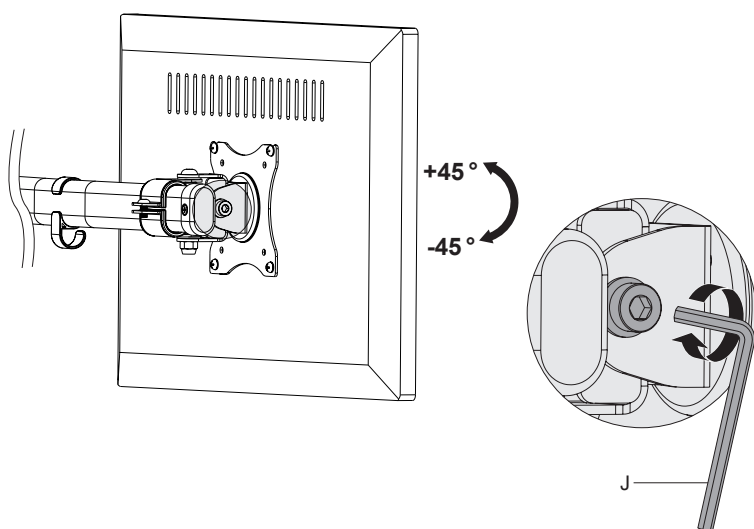
STEP 4A-2

Thread bolts (**M-A**, **M-B**) and washers (**M-C**) into top two holes on each monitor making sure to leave 3mm of threads exposed. Slide monitors onto VESA plates and secure bottom two holes on each using bolts (**M-A**, **M-B**) and washers (**M-C**).



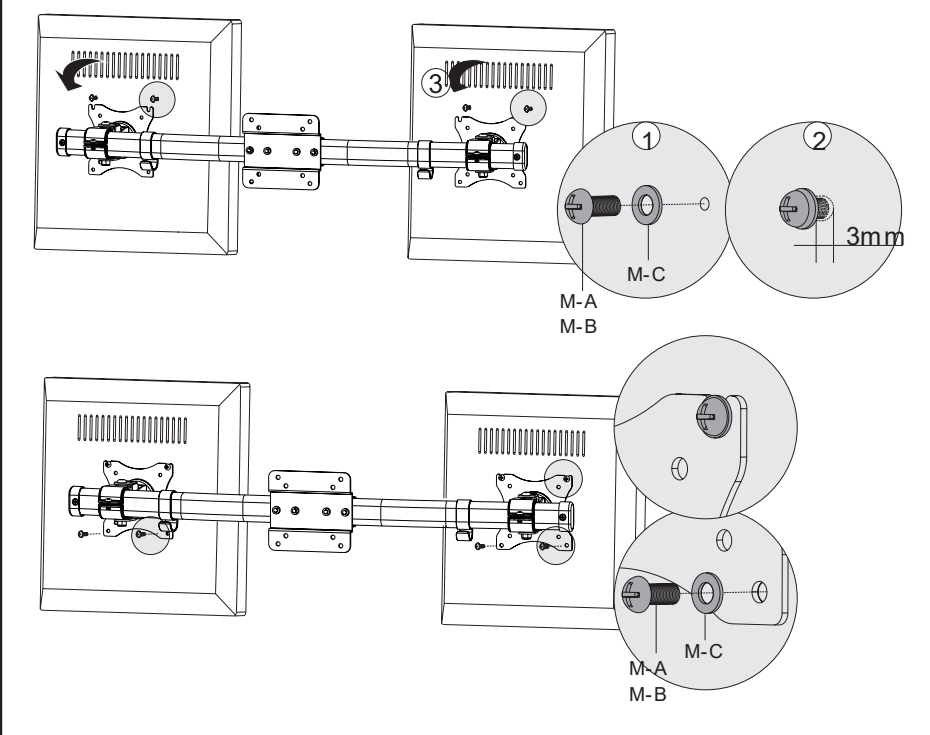
STEP4A-3

Adjust monitors using 6mm allen key (**J**).



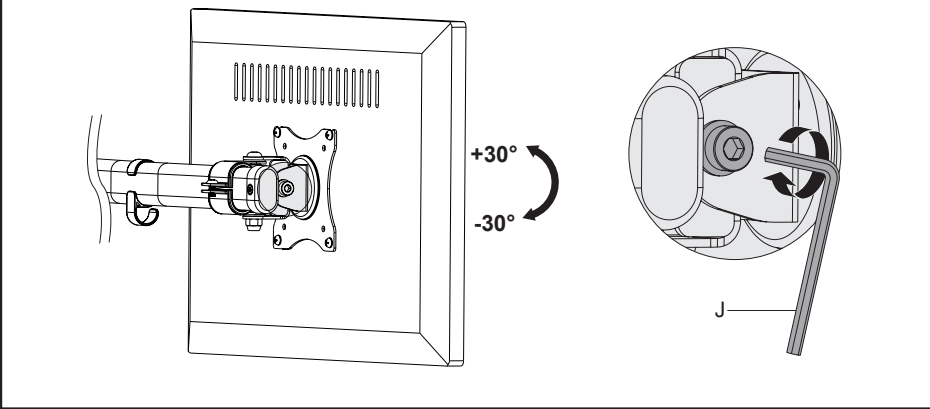
STEP 4B-1

Thread bolts (**M-A**, **M-B**) and washers (**M-C**) into top two holes on each monitor making sure to leave 3mm of threads exposed. Slide monitors onto VESA plates and secure bottom two holes on each using bolts (**M-A**, **M-B**) and washers (**M-C**).



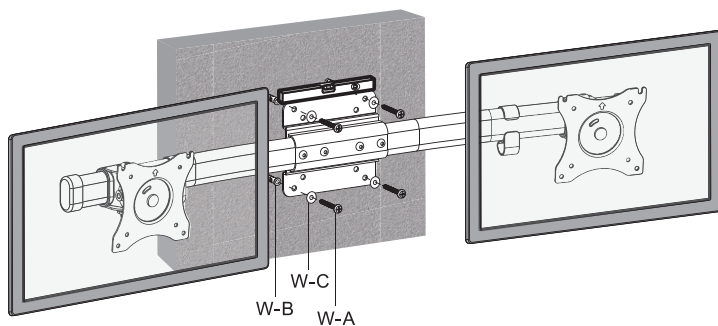
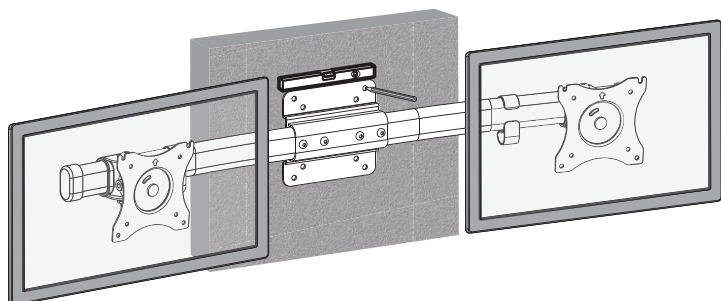
STEP 4B-2

Place bracket (**B**) on the wall and mark drilling locations. Drill 2.2" (55mm) deep holes using a 5/16" (8mm) drill bit, and press anchors (**W-B**) into holes (please note, anchors are for concrete/brick only; do not install to drywall alone). Secure mount to wall using screws (**W-A**) and washers (**W-C**).
(NOTE: For wood stud installation, use 4 holes on the left or right side of the bracket aligned with the wood stud. Drill holes with a 5/32" [4mm] bit and mount using only screws and washers. Do not use anchors with wood.)

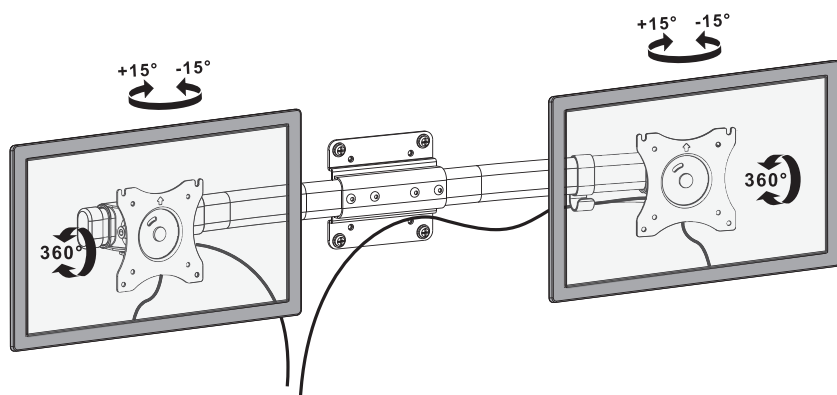


STEP 4B-3

Adjust monitors using 6mm allen key (J).



Adjust as Desired





Love your new VIVO setup and want to share?
Tag us in your photo! **@vivo_us**

LAST UPDATED: 03/05/2020



Open **Monday - Friday 7:00am - 7:00pm** CST,
our dedicated support team can offer immediate assistance with rapid response times. If any
parts are received damaged or defective, please contact us. We are happy to replace parts to
ensure you have a fully functioning product.



help@vivo-us.com

AVG. RESPONSE TIME (*within office hrs*): **1HR 8M**

- 23% within < 15m
- 38% within < 30m
- 61% within < 1hr
- 83% within < 2hr
- 92% within < 3hr



www.vivo-us.com
Chat live with an agent!

AVG. RESOLUTION TIME (*within office hrs*): **< 15 M**



309-278-5303

AVG. RESOLUTION TIME (*within office hrs*): **5M 4S**

FOR MORE VIVO PRODUCTS, CHECK OUT OUR WEBSITE AT: www.vivo-us.com