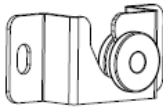


Ultra-Low Profile TV and Soundbar Wall Mount Instruction Manual



SKU: MOUNT-VW00



Scan the QR code with your mobile device or follow the link for helpful videos and specifications related to this product.

<https://vivo-us.com/products/mount-vw00>

GET IN TOUCH | Monday-Friday from 7:00am-7:00pm CST



help@vivo-us.com



www.vivo-us.com
Chat live with an agent!



309-278-5303

WARNING!

If you do not understand these directions, or if you have any doubts about the safety of the installation, please call a qualified technician. Check carefully to make sure there are no missing or defective parts. Improper installation may cause damage or serious injury. Do not use this product for any purpose that is not explicitly specified in this manual. Do not exceed weight capacity. We cannot be liable for damage or injury caused by improper mounting, incorrect assembly or inappropriate use.

PACKAGE CONTENTS



A (x2)
Bracket



B (x2)
Plastic Support
Bushing



C (x2)
Bumper



M-A (x4)
M6x35



M-B (x4)
M8x35



M-C (x8)
Washer



M-D (x4)
Spacer



M-E (x4)
Screw



M-F (x4)
Anchor

NOTE: NOT ALL HARDWARE INCLUDED WILL BE USED

CAUTION!

DO NOT INSTALL INTO DRYWALL ALONE. VERIFY YOUR WALL CONSTRUCTION. USE WOOD STUDS TO MOUNT. We include mounting for brick and concrete walls. If unsure, please contact us at vivo-us.com, email at help@vivo-us.com, or call us at 309-278-5303.

TOOLS NEEDED



Drill



Phillips
Screwdriver

DO NOT EXCEED WEIGHT CAPACITY.

Failure to do so may result in serious injury.



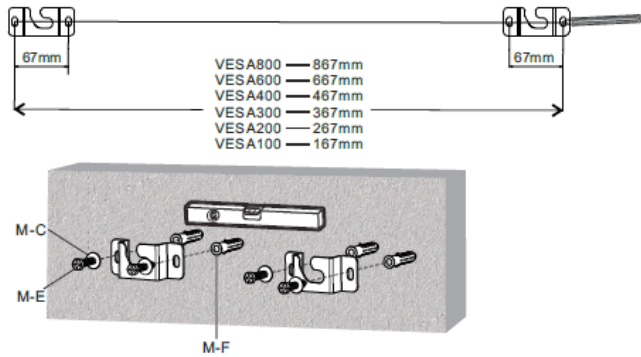
WARNING: CHOKING HAZARD

SMALL PARTS - NOT FOR CHILDREN UNDER 3 YEARS. ADULT SUPERVISION IS REQUIRED.

ASSEMBLY STEPS

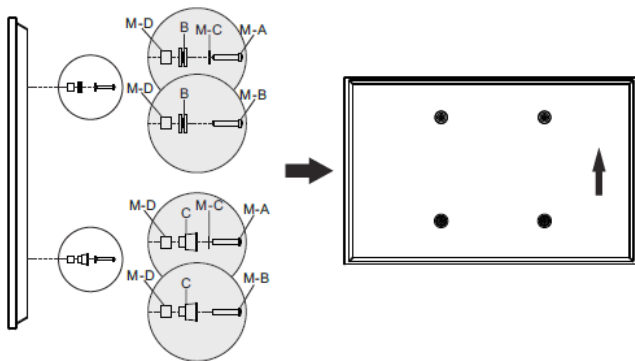
STEP 1

Measure distance according to your TV's VESA mounting pattern as shown in the diagram (use of a level is recommended). Drill 2.4" (60mm) deep holes using a 3/8" (10mm) drill bit and press anchors (M-F) into holes. Mount brackets (A) to wall using screws (M-E) and washers (M-C). **NOTE:** anchors are designed for concrete and brick, and will not work for drywall.



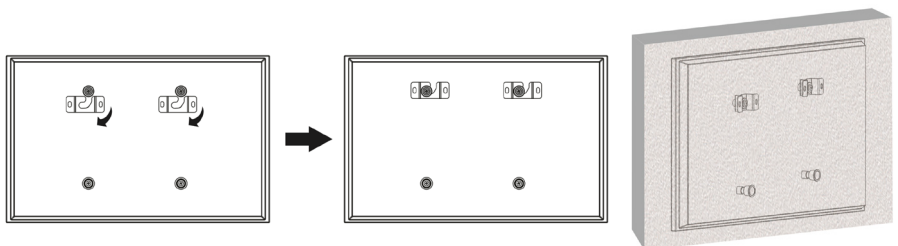
STEP 2

Mount support bushings (B) to top two holes in TV and bumpers (C) to bottom two holes using screws (M-A or M-B) and washers (M-C). If necessary, install spacers (M-D) between TV and bushings/bumpers.



STEP 3

Slide TV down then over into brackets (A) as shown in diagram.





Open **Monday - Friday 7:00am - 7:00pm** CST,
our dedicated support team can offer immediate assistance with rapid response times. If any parts are received damaged or defective, please contact us. We are happy to replace parts to ensure you have a fully functioning product.


 help@vivo-us.com

AVG. RESPONSE TIME (*within office hrs*): **1HR 8M**

- 23% within < 15m
- 38% within < 30m
- 61% within < 1hr
- 83% within < 2hr
- 92% within < 3hr

 www.vivo-us.com
Chat live with an agent!

AVG. RESOLUTION TIME (*within office hrs*): **< 15 M**

 309-278-5303

AVG. RESOLUTION TIME (*within office hrs*): **5M 4S**