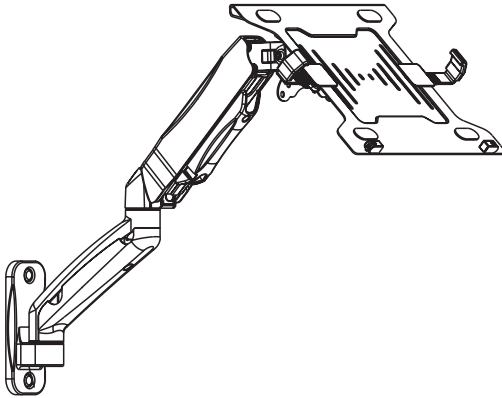




Pneumatic Arm Single Laptop Wall Mount

Instruction Manual



SKU: MOUNT-V001GL



Scan the QR code with your mobile device or follow the link for helpful videos and specifications related to this product.

<https://vivo-us.com/products/mount-v001gl>

GET IN TOUCH | Monday-Friday from 7:00am-7:00pm CST



help@vivo-us.com



www.vivo-us.com
Chat live with an agent!



309-278-5303

⚠️ WARNING!

If you do not understand these directions, or if you have any doubts about the safety of the installation, please call a qualified technician. Check carefully to make sure there are no missing or defective parts. Improper installation may cause damage or serious injury. Do not use this product for any purpose that is not explicitly specified in this manual. Do not exceed weight capacity. We cannot be liable for damage or injury caused by improper mounting, incorrect assembly or inappropriate use.

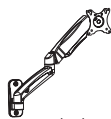
⚠️ WARNING: CHOKING HAZARD

SMALL PARTS - NOT FOR CHILDREN UNDER 3 YEARS. ADULT SUPERVISION IS REQUIRED.

⚠️ CAUTION!

DO NOT INSTALL INTO DRYWALL ALONE. VERIFY YOUR WALL CONSTRUCTION. USE WOOD STUDS TO MOUNT. We include mounting hardware for brick and concrete walls. If unsure, please contact us at vivo-us.com, email at help@vivo-us.com, or call us at 309-278-5303.

PACKAGE CONTENTS



A (x1)
Arm



B (x2)
Cover



C (x1)
5mm Allen
Wrench



D (x1)
Laptop Tray



E (x2)
Laptop Arm



F (x2)
Clip



G (x4)
M4x8



M-A (x4)
M4x12



M-B (x4)
M5x12



M-C (x4)
D5 Washer



W-A (x2)
ST6.3x55



W-B (x2)
Concrete Anchor



W-C (x2)
D6 Washer

NOTE: SOME HARDWARE INCLUDED MAY NOT BE USED

TOOLS NEEDED



Phillips
Screwdriver

DO NOT EXCEED WEIGHT CAPACITY.
Failure to do so may result in serious injury.

**9.9lbs
(4.5kg)**

LAPTOP

**4.4-19.8lbs
(2-9kg)**

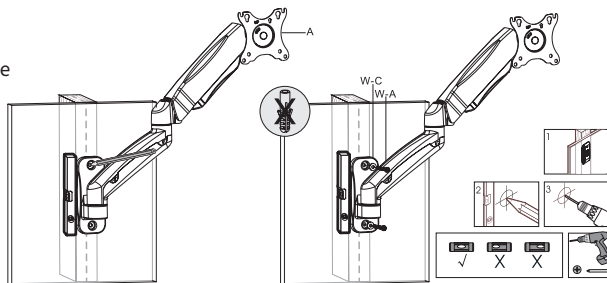
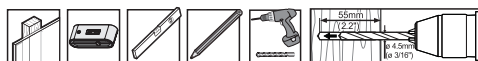
MONITOR

ASSEMBLY STEPS

STEP 1

OPTION A: Wood Stud Wall

Use a pencil to mark drilling locations and drill 2.2" (55mm) deep holes using 3/16" (4.5mm) bit. Use of a stud finder is recommended. Mount arm (A) to wall using ST6.3x55 screws (W-A) and D6 washers (W-C). Do NOT use concrete anchors (W-B) for wood stud installation.

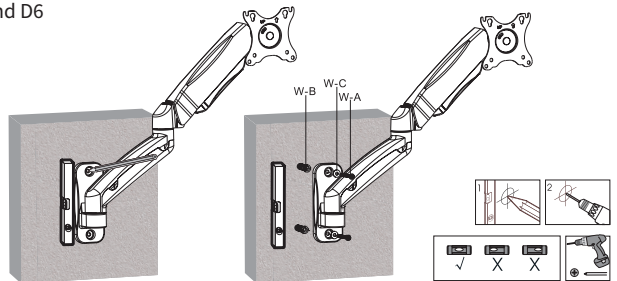
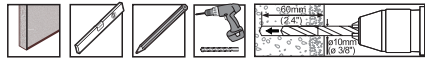


STEP 1 (Continued)

OPTION B: Brick/Concrete Wall

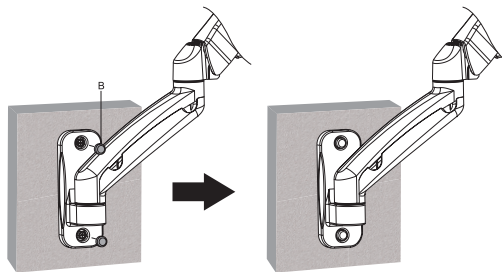
Use a pencil to mark drilling locations and drill 2.4" (60mm) deep holes using a 3/8" (10mm) bit.

Mount arm **(A)** to wall using ST6.3x55 screws **(W-A)**, concrete anchors **(W-B)** and D6 washers **(W-C)**.



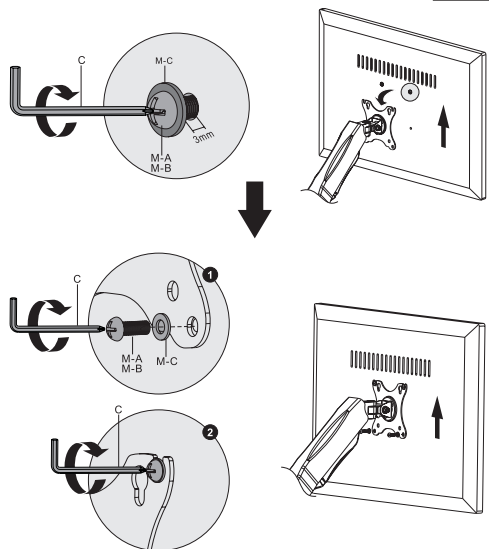
STEP 2

Press covers **(B)** into screw holes.



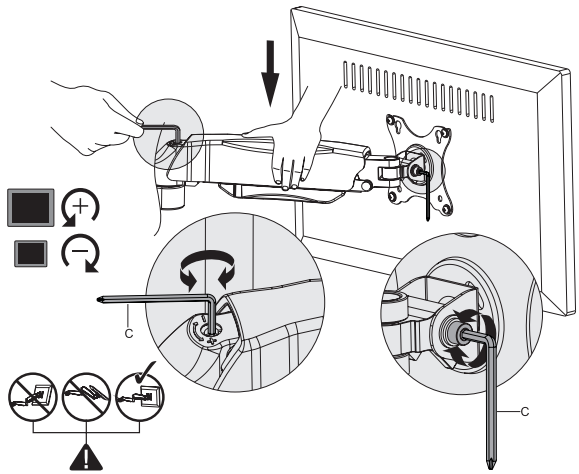
OPTION A: MONITOR INSTALLATION STEP 1

Install screws **(M-A or M-B)** with D6 washers **(M-C)** in top two holes of the monitor, leaving 3mm of space between the screw heads and the monitor. Hang monitor with screws over slots in the VESA plate. Insert screws **(M-A or M-B)** with D5 washers **(M-C)** into lower two holes and tighten using the Phillips end of the 5mm Allen Wrench **(C)**.



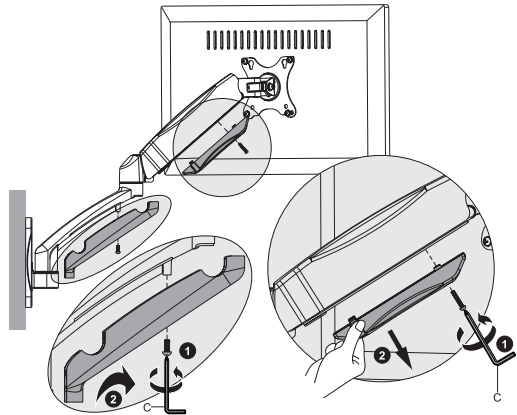
STEP 2

While holding the arm straight forward, adjust arm tension by turning the screw on top of the center arm joint with the 5mm Allen wrench (C). Turn clockwise to reduce tension and counterclockwise to increase. The tension should be just enough to hold your monitor in place without lifting itself up. If needed, adjust bolts on the sides of the hinge behind the VESA plate to tighten or loosen the tilt support.



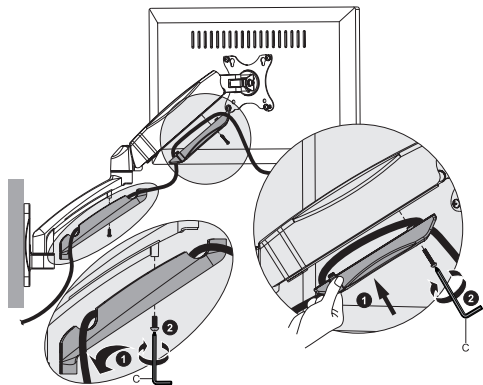
STEP 3

Remove cable covers by removing the screw underneath each one.



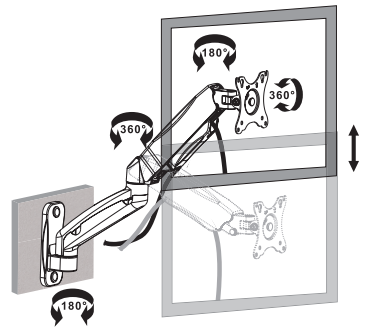
STEP 4

Insert cables and replace covers while making sure the cables have enough slack to allow enough free movement of the arm.



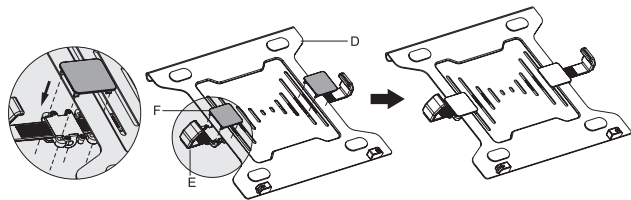
STEP 5

Adjust monitor position as desired.



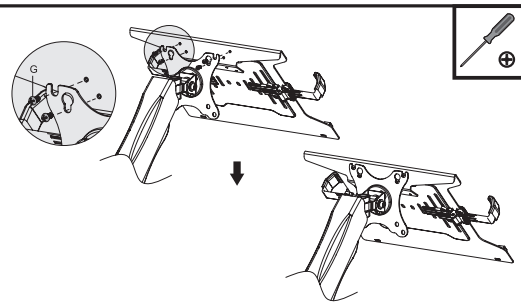
OPTION B: LAPTOP INSTALLATION STEP 1

Place laptop arms (**E**) underneath each side of the laptop tray (**D**), aligning the square holes in the arms with the edge and long slot on each side. Insert clips (**F**) through the top to secure the arms, making sure all 4 locks on each clip are engaged with the square holes in the arms.



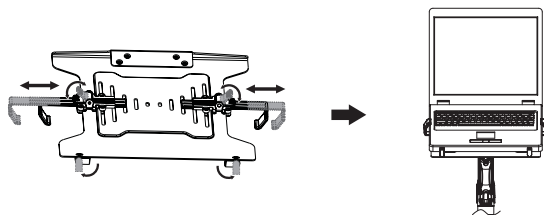
STEP 2

Attach assembled laptop holder to 75mm and 100mm holes on the arm (**A**) using M4x8 screws (**G**). Tighten screws using the Phillips end of the 5mm Allen Wrench (**C**).



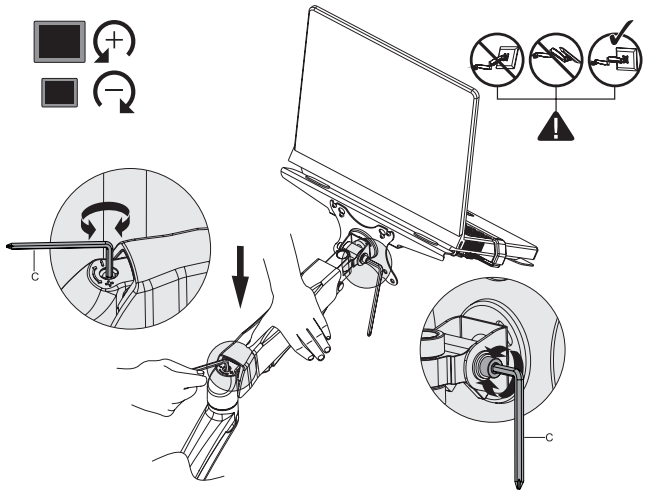
STEP 3

Release the locks on the underside of the laptop arms (**E**). Extend arms, place laptop in the holder, then adjust the arms to fit the width of the laptop. Engage locks to secure the laptop. If using a thicker laptop, turn the front bumpers to the upward position for additional support.



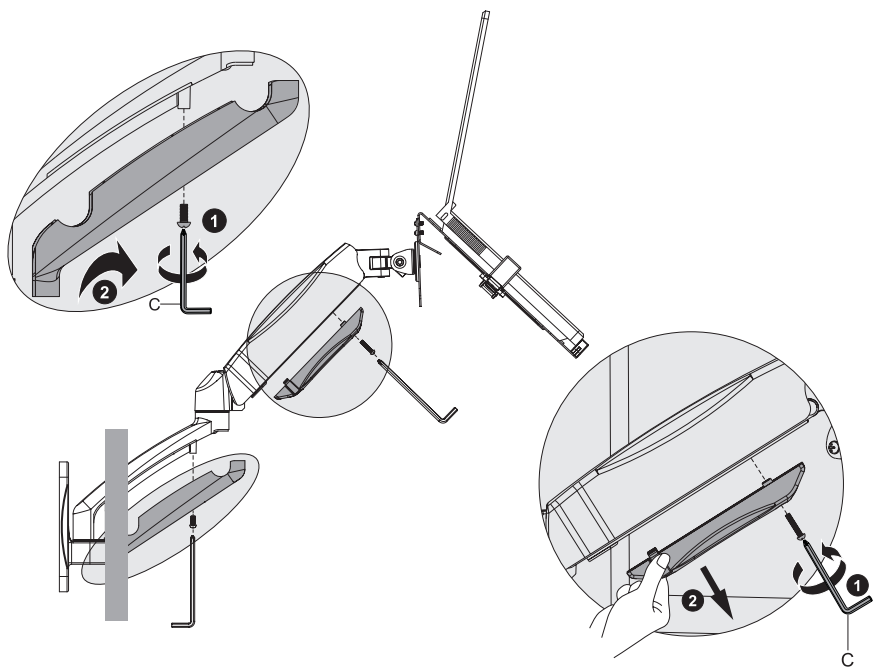
STEP 4

While holding the arm straight forward, adjust arm tension by turning the screw on top of the center arm joint with the 5mm Allen wrench (C). Turn clockwise to reduce tension and counterclockwise to increase. The tension should be just enough to hold your laptop in place without lifting itself up. If needed, adjust bolts on the sides of the hinge behind the VESA plate to tighten or loosen the tilt support.



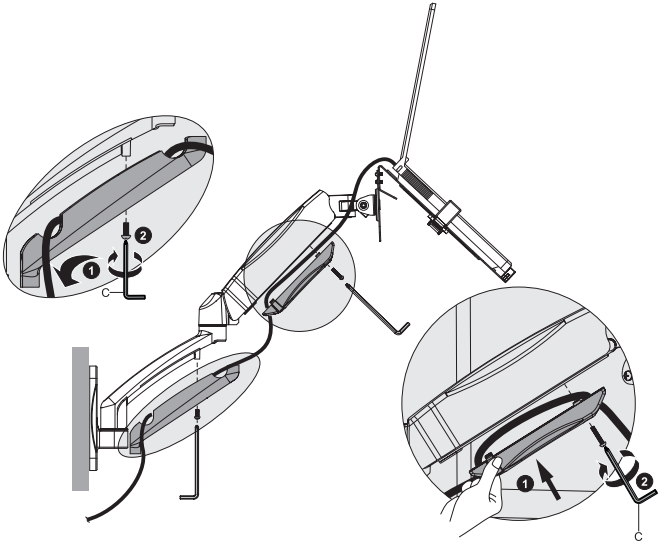
STEP 5

Remove cable covers by removing the screw underneath each one.



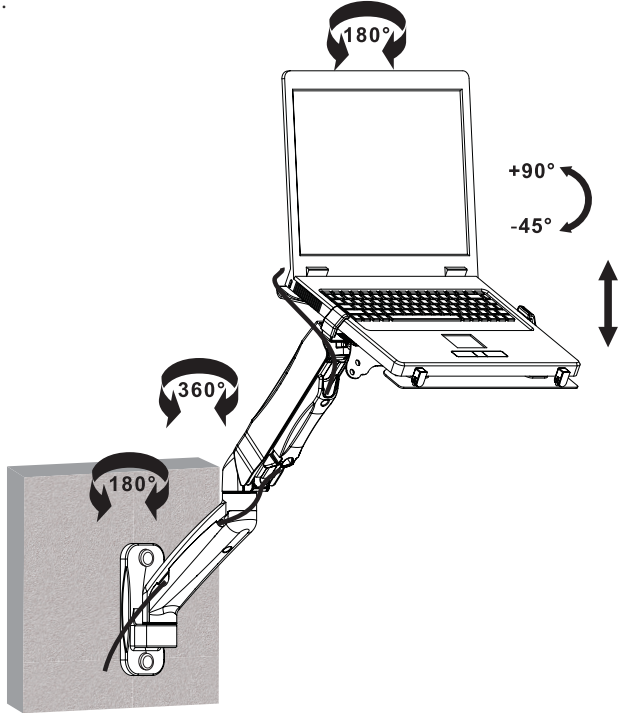
STEP 6

Insert cables and replace covers while making sure the cables have enough slack to allow enough free movement of the arm.



STEP 7

Adjust laptop position as desired.





Open **Monday - Friday 7:00am - 7:00pm** CST,
our dedicated support team can offer immediate assistance with rapid response times. If any parts are received damaged or defective, please contact us. We are happy to replace parts to ensure you have a fully functioning product.


 help@vivo-us.com

AVG. RESPONSE TIME (*within office hrs*): **1HR 8M**

- 23% within < 15m
- 38% within < 30m
- 61% within < 1hr
- 83% within < 2hr
- 92% within < 3hr

 www.vivo-us.com
Chat live with an agent!

AVG. RESOLUTION TIME (*within office hrs*): **< 15 M**

 309-278-5303

AVG. RESOLUTION TIME (*within office hrs*): **5M 4S**