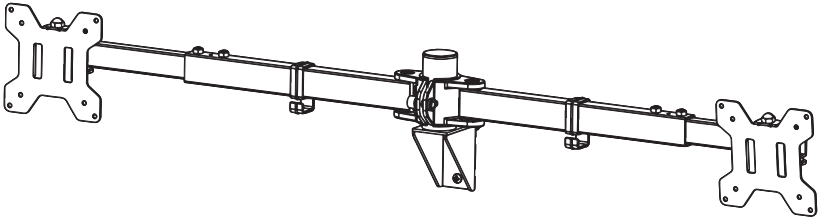




---

## Telescoping Dual Monitor Wall Mount

### Instruction Manual



**SKU: MOUNT-TS32B**



Scan the QR code with your mobile device or follow the link for helpful videos and specifications related to this product.

<https://vivo-us.com/products/mount-ts32b>

---

**GET IN TOUCH** | Monday-Friday from 7:00am-7:00pm CST



help@vivo-us.com



www.vivo-us.com  
*Chat live with an agent!*



309-278-5303

# ⚠ WARNING!

If you do not understand these directions, or if you have any doubts about the safety of the installation, please call a qualified technician. Check carefully to make sure there are no missing or defective parts. Improper installation may cause damage or serious injury. Do not use this product for any purpose that is not explicitly specified in this manual. Do not exceed weight capacity. We cannot be liable for damage or injury caused by improper mounting, incorrect assembly or inappropriate use.

## ⚠ WARNING: CHOKING HAZARD

SMALL PARTS - NOT FOR CHILDREN UNDER 3 YEARS. ADULT SUPERVISION IS REQUIRED.

### PACKAGE CONTENTS



**A (x1)**  
Wall Mount



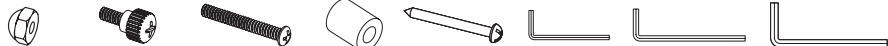
**B (x1)**  
Arm



**C (x2)**  
VESAPlate



**D (x2)**  
Cable Clip



<b>S-A (x2)</b> M6 Cap Nut	<b>M-A (x8)</b> M4x12mm Thumbscrew	<b>M-B (x8)</b> M4x30mm Screw	<b>M-C (x8)</b> M4 Spacer	<b>W-A (x3)</b> ST6x60mm Screw	<b>T-A (x1)</b> 3mm Allen Wrench	<b>T-B (x1)</b> 5mm Allen Wrench	<b>T-C (x1)</b> 6mm Allen Wrench
-------------------------------	---------------------------------------	----------------------------------	------------------------------	-----------------------------------	-------------------------------------	-------------------------------------	-------------------------------------

### TOOLS NEEDED

**DO NOT EXCEED WEIGHT CAPACITY.**

Failure to do so may result in serious injury.



Drill



Phillips



Stud Finder



Level

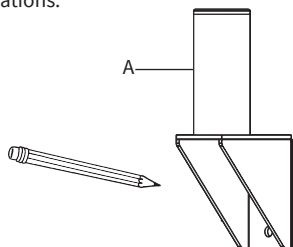


Pencil

## ASSEMBLY STEPS

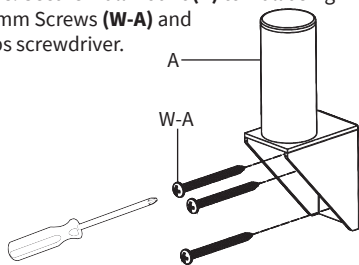
### STEP 1

Stud mounting is required. Use of a stud finder and level is recommended. Place Wall Mount (A) in the desired location, and use a pencil to mark drilling locations.



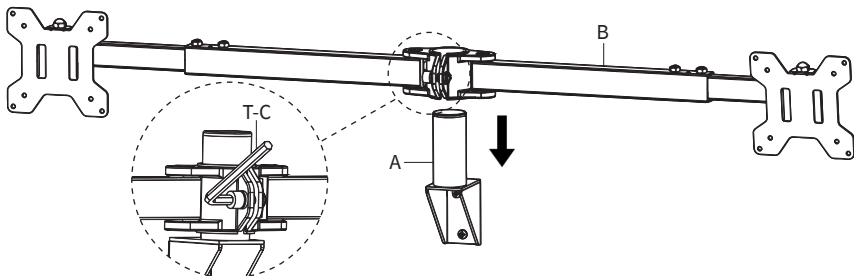
### STEP 2

Using a 4.5mm (11/64") drill bit, drill approximately 55mm (2.2") into marked locations. Secure Wall Mount (A) to wall using ST6x60mm Screws (W-A) and a Phillips screwdriver.



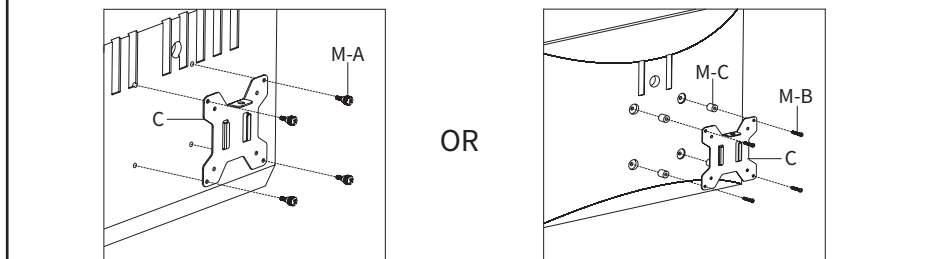
### STEP 3

Slide Arm (B) onto Wall Mount (A) and secure using 6mm Allen Wrench (T-C).



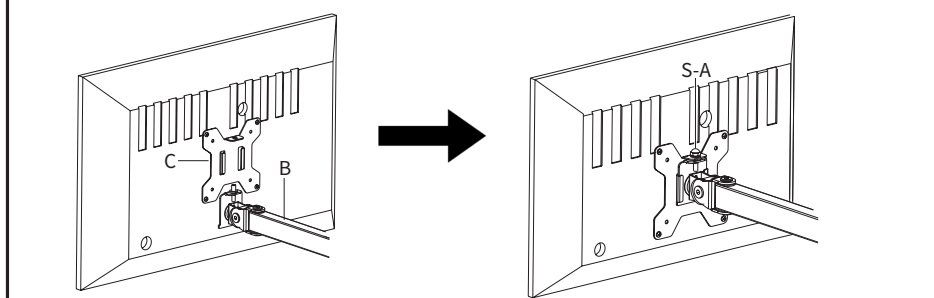
## STEP 4

Assemble VESA Plates (**C**) to the back of the monitors using M4x12mm Thumbscrews (**M-A**). For curved monitors, use M4x30mm Screws (**M-B**) with M4 Spacers (**M-C**).



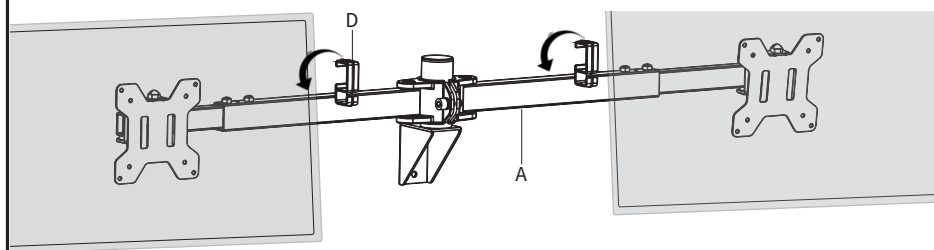
## STEP 5

Slide VESA Plates (**C**) with monitors onto the Swivel Arm (**B**) and secure using M6 Cap Nuts (**S-A**).



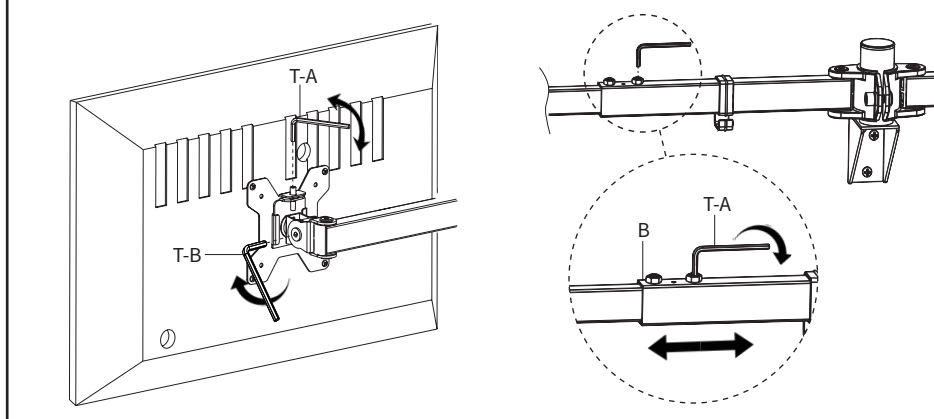
## STEP 6

Secure Cable Clips (**D**) to Arm (**A**) and manage cables.



## STEP 7

Adjust the tilt using 5mm Allen Wrench (**T-B**). The monitors can be leveled using 3mm Allen Wrench (**T-A**). Adjust the length of Arm (**B**) using 3mm Allen Wrench (**T-A**).





Open **Monday - Friday 7:00am - 7:00pm** CST, our dedicated support team can offer immediate assistance with rapid response times. If any parts are received damaged or defective, please contact us. We are happy to replace parts to ensure you have a fully functioning product.



309-278-5303

**AVG. RESOLUTION TIME** (*within office hrs*): **5M 4S**



[www.vivo-us.com](http://www.vivo-us.com)  
*Chat live with an agent!*

**AVG. RESOLUTION TIME** (*within office hrs*): **< 15 M**



[help@vivo-us.com](mailto:help@vivo-us.com)

**AVG. RESPONSE TIME** (*within office hrs*): **1HR 8M**

- 23% within < 15m
- 38% within < 30m
- 61% within < 1hr
- 83% within < 2hr
- 92% within < 3hr