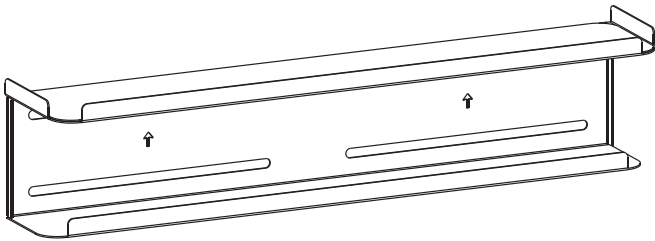




Black Behind TV VESA Shelf

Instruction Manual



SKU: MOUNT-SFTV4



Scan the QR code with your mobile device or follow the link for helpful videos and specifications related to this product.

<https://vivo-us.com/products/mount-sftv4>

GET IN TOUCH | Monday-Friday from 7:00am-7:00pm CST



help@vivo-us.com



www.vivo-us.com
Chat live with an agent!

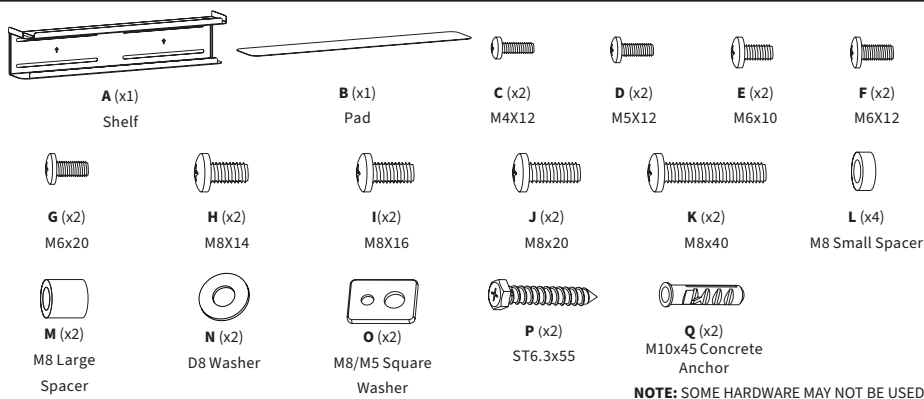


309-278-5303

WARNING!

If you do not understand these directions, or if you have any doubts about the safety of the installation, please call a qualified technician. Check carefully to make sure there are no missing or defective parts. Improper installation may cause damage or serious injury. Do not use this product for any purpose that is not explicitly specified in this manual. Do not exceed weight capacity. We cannot be liable for damage or injury caused by improper mounting, incorrect assembly or inappropriate use.

PACKAGE CONTENTS



WARNING: CHOKING HAZARD SMALL PARTS - NOT FOR CHILDREN UNDER 3 YEARS. ADULT SUPERVISION IS REQUIRED. DO NOT INSTALL INTO DRYWALL ALONE. VERIFY YOUR WALL CONSTRUCTION. USE WOOD STUDS TO MOUNT.

CAUTION We include mounting hardware for brick and concrete walls. If unsure, please contact us at vivo-us.com, email at help@vivo-us.com, or call us at 309-278-5303.

TOOLS NEEDED



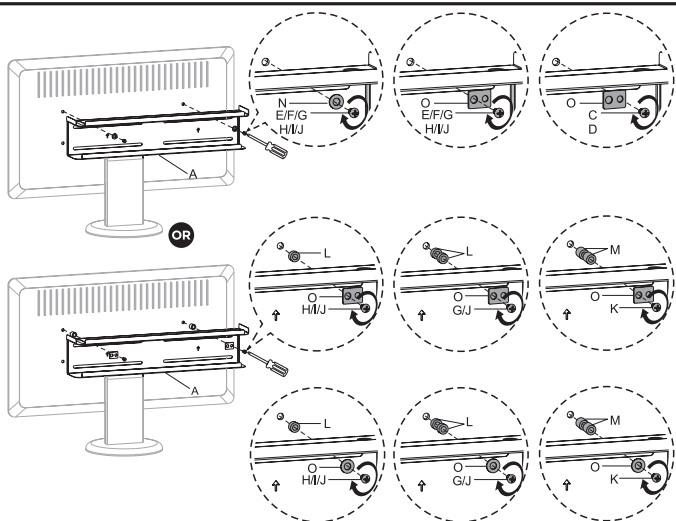
DO NOT EXCEED WEIGHT CAPACITY.
Failure to do so may result in serious injury.



ASSEMBLY STEPS

STEP 1

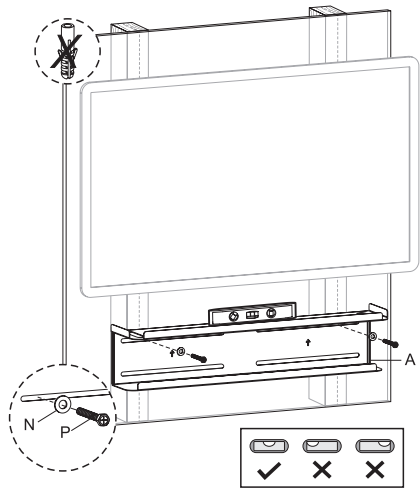
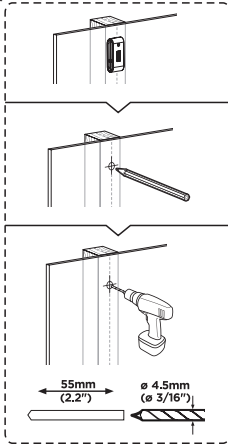
OPTION A: TV Mounting
Mount the shelf (A) to the top or bottom row of VESA mounting holes in the back of the TV using two bolts (C through K), washers (N, O) and spacers (L, M) as needed. Spacers should be installed between the TV and shelf if used.



STEP 1 (Continued)

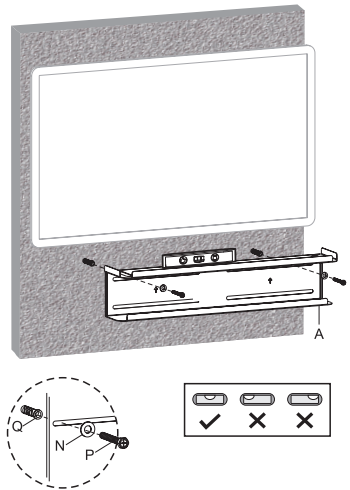
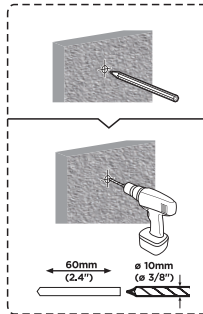
OPTION B: Wood Stud Mounting

Place the shelf (A) against the wall and mark two drilling locations with a pencil. Use of a stud finder is highly recommended. Drill 2.2" (55mm) deep holes using a 3/16" (4.5mm) drill bit, then install the shelf to the wall using ST6.3x55 screws (P) with D8 washers (N).



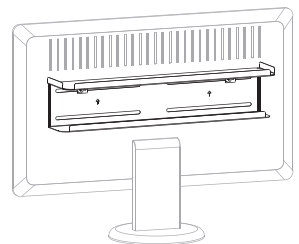
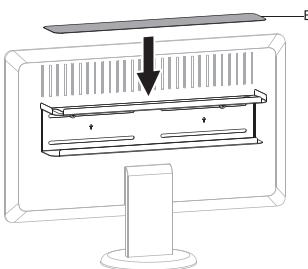
OPTION C: Concrete/Brick Wall Mounting

Place the shelf (A) against the wall and mark two drilling locations with a pencil. Drill 2.4" (60mm) deep holes using a 3/8" (10mm) drill bit. Insert the M10x45 concrete anchors (Q) into the holes, then install the shelf to the wall using ST6.3x55 screws (P) with D8 washers (N).



STEP 2

Remove the clear plastic backing from pad (B) and place onto the top of the shelf (A). The shelf is now ready for use.





Open **Monday - Friday 7:00am - 7:00pm** CST,
our dedicated support team can offer immediate assistance with rapid response times. If any parts are received damaged or defective, please contact us. We are happy to replace parts to ensure you have a fully functioning product.



309-278-5303

AVG. RESOLUTION TIME (*within office hrs*): **5M 4S**



www.vivo-us.com
Chat live with an agent!

AVG. RESOLUTION TIME (*within office hrs*): **< 15 M**



help@vivo-us.com

AVG. RESPONSE TIME (*within office hrs*): **1HR 8M**

- 23% within < 15m
- 38% within < 30m
- 61% within < 1hr
- 83% within < 2hr
- 92% within < 3hr