

Heavy Duty Under Desk PC Mount

SKU: MOUNT-PC04B
Instruction Manual

Assembly Video & Product Info
www.vivo-us.com/products/mount-pc04b



! CAUTION! !

If you do not understand these directions, or if you have any doubts about the safety of the installation, please contact our product support team at 309-278-5303 or help@vivo-us.com for further assistance. Check carefully to make sure there are no missing or defective parts. Improper installation may cause damage or serious injury. Do not use this product for any purpose that is not explicitly specified in this manual. Do not exceed weight capacity. We cannot be liable for damage or injury caused by improper mounting, incorrect assembly or inappropriate use.



WARNING: CHOKING HAZARD

SMALL PARTS - NOT FOR CHILDREN UNDER 3 YEARS. ADULT SUPERVISION IS REQUIRED.



DO NOT EXCEED WEIGHT CAPACITY

FAILURE TO DO SO MAY RESULT IN SERIOUS INJURY.

We're Here for You

Open **Monday - Friday 7:00am - 7:00pm** CST, our dedicated support team can offer immediate assistance with rapid response times. If any parts are received damaged or defective, please contact us. We are happy to replace parts to ensure you have a fully functioning product.



Give us a Call:
309-278-5303

AVG. RESOLUTION TIME (*within office hrs*): **5M 4S**



Chat Us:
www.vivo-us.com

AVG. RESOLUTION TIME (*within office hrs*): **< 15 M**

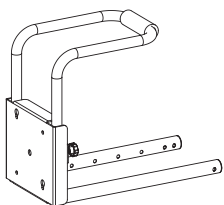


Email Us:
help@vivo-us.com

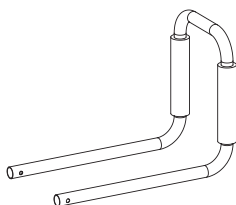
AVG. RESPONSE TIME (*within office hrs*): **1HR 8M**

- 23% within < 15m
- 38% within < 30m
- 61% within < 1hr
- 83% within < 2hr
- 92% within < 3hr

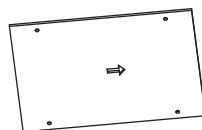
Package Contents



A (x1)
CPU Mount



B (x1)
Support Bar



C (x1)
Template

Included Hardware & Tools



S-A (x2)
M6x10mm
Screw



S-B (x4)
ST5.5x19mm
Screw



T-A (x1)
4mm Allen Wrench

Tools Needed:



**Phillips
Screwdriver**



**Power
Drill**



**4mm
Drill Bit**

Weight Capacity:

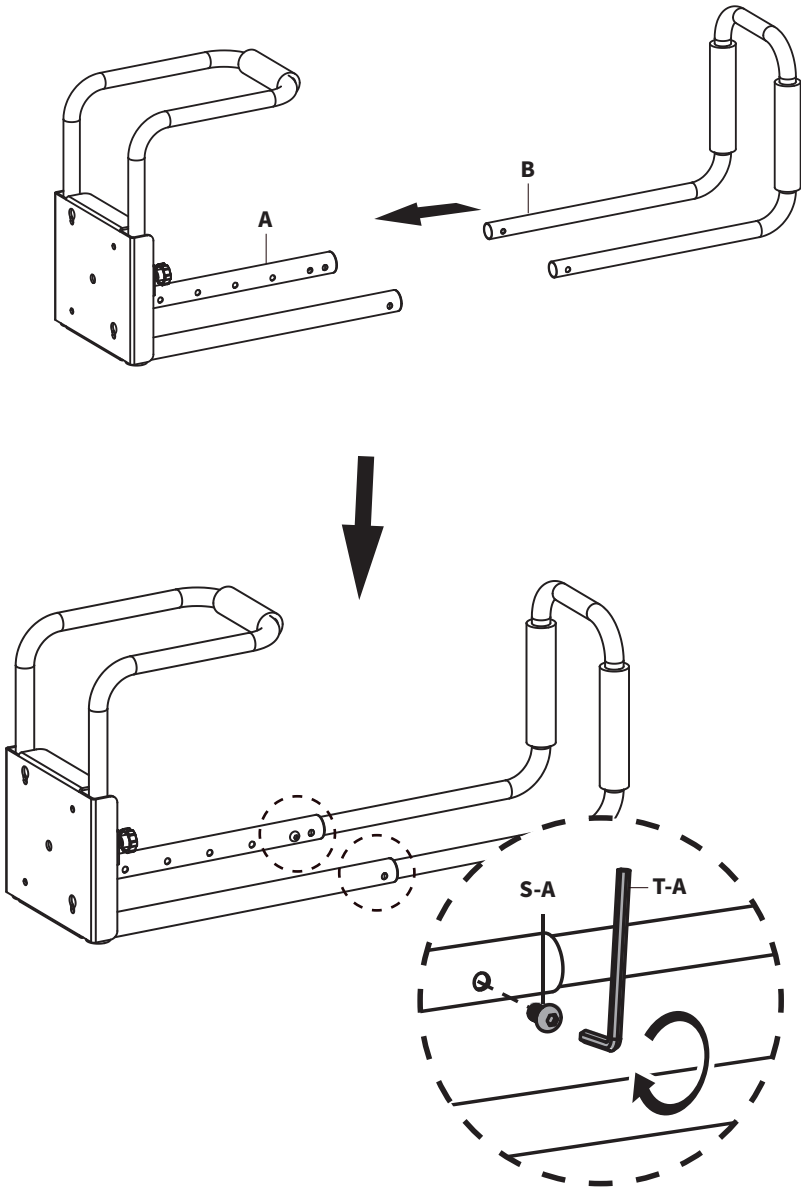


**66lbs
(30kg)**

ASSEMBLY STEPS

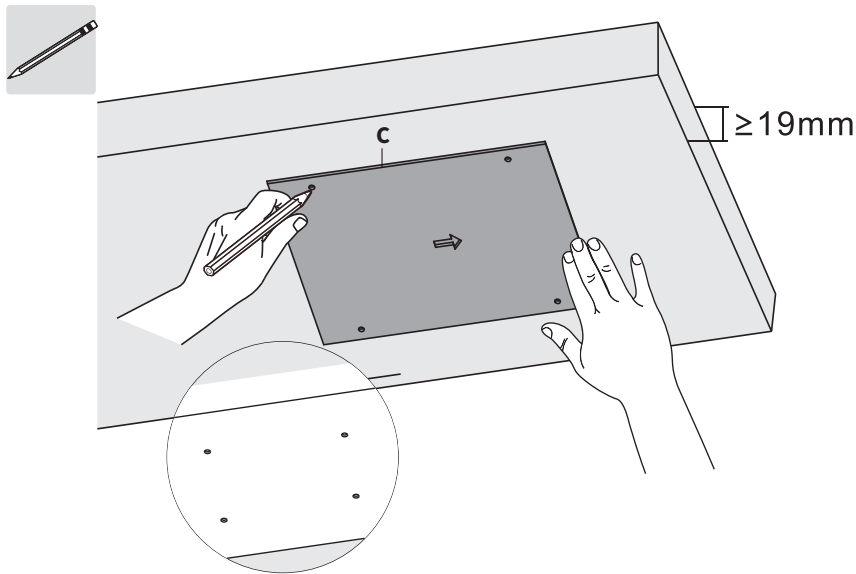
STEP 1

Insert Support Bar (B) into CPU Mount (A) and secure using M6x10mm Screws (S-A) and 4mm Allen Wrench (T-A).



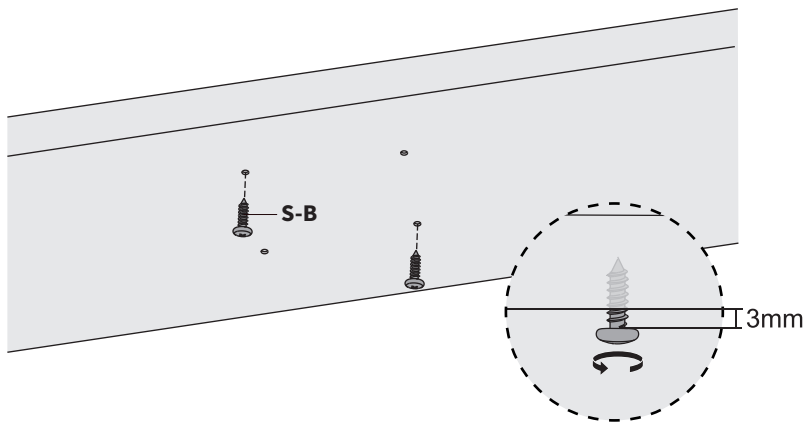
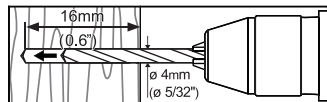
STEP 2

Using Template **(C)**, mark drilling locations on the underside of the desktop in the desired location.



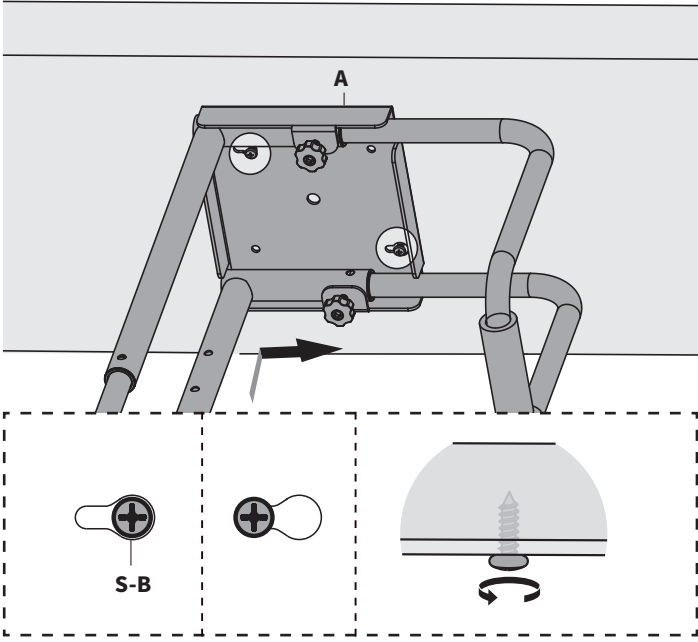
Drill 0.6" (16mm) deep holes at marked locations using a 5/32" (4mm) drill bit.

Insert ST5.5x19mm Screws **(S-B)** in front-left and rear-right locations, leaving 1/8" (3mm) of thread exposed.

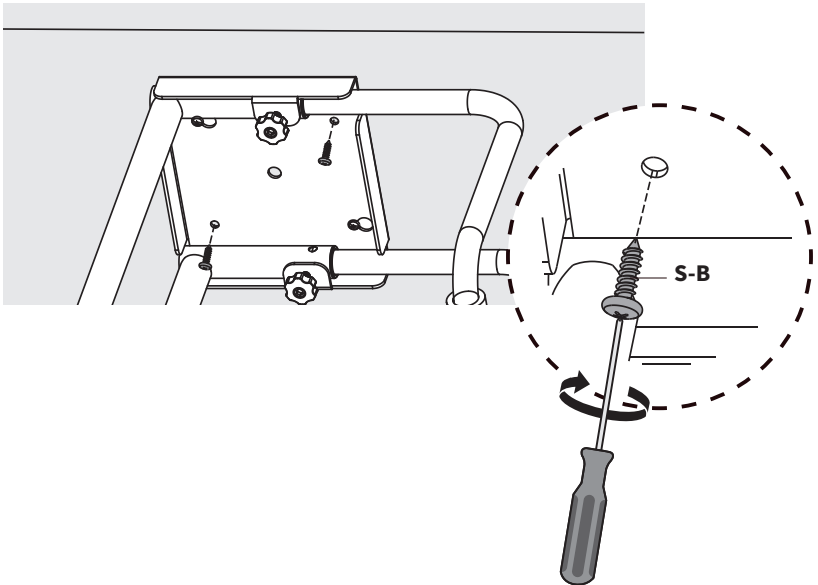


STEP 3

Position keyholes in CPU Mount (**A**) over screws and slide in place. Tighten ST5.5x19mm Screws (**S-B**) using a Phillips screwdriver.

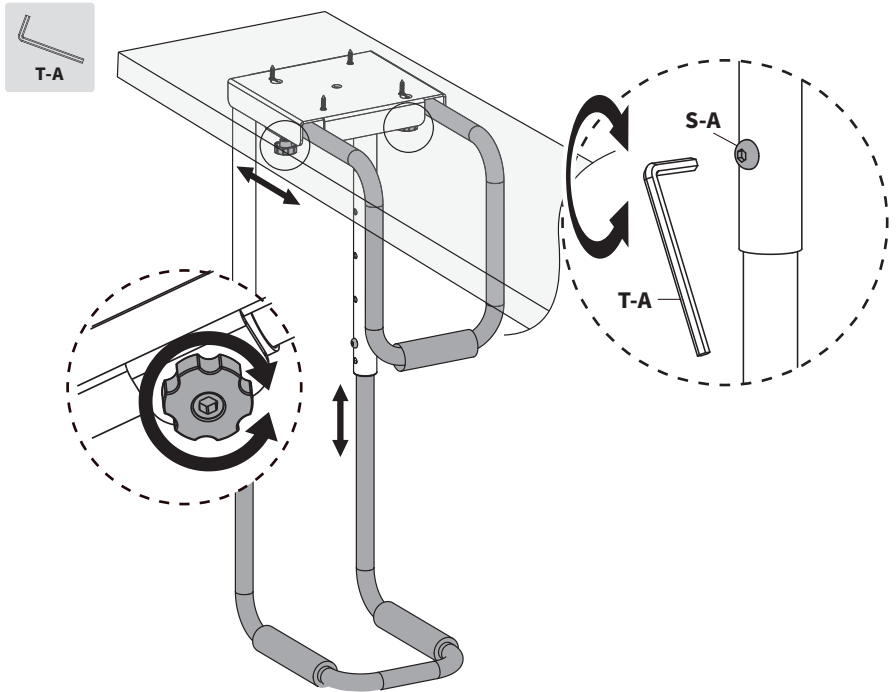


Install ST5.5x19mm Screws (**S-B**) into remaining holes and tighten with a Phillips screwdriver.



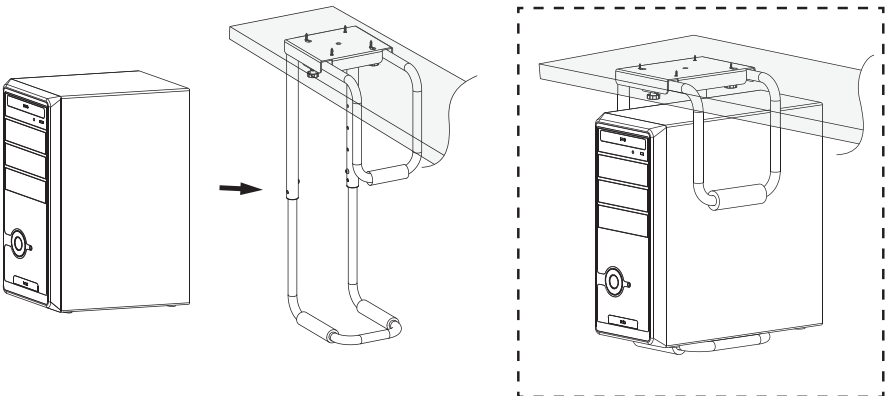
STEP 4

Loosen knobs on underside of CPU Mount (**A**) and adjust side support bar to fit your CPU tower width. Remove M6x10mm Screws (**S-A**) using 4mm Allen Wrench (**T-A**) and adjust support bar to the lowest position if needed.



STEP 5

Place your CPU tower in mount and raise support bar to the highest possible position according to your CPU tower's height.





Need Help? Get In Touch

Monday-Friday from 7:00am-7:00pm CST



help@vivo-us.com



www.vivo-us.com

Chat live with an agent!



309-278-5303



VIVO-us @vivo_us