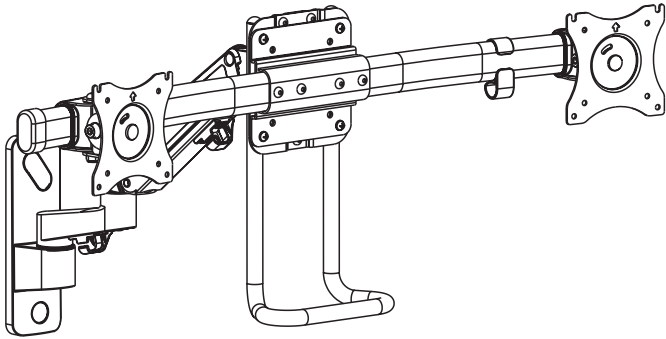




Dual Monitor Wall Mount

Instruction Manual



SKU: MOUNT-G200B2



Scan the QR code with your mobile device or follow the link for helpful videos and specifications related to this product.

<https://vivo-us.com/products/mount-g200b2>

GET IN TOUCH | Monday-Friday from 7:00am-7:00pm CST



help@vivo-us.com



www.vivo-us.com
Chat live with an agent!

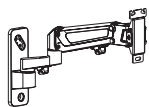


309-278-5303

⚠ WARNING!

If you do not understand these directions, or if you have any doubts about the safety of the installation, please call a qualified technician. Check carefully to make sure there are no missing or defective parts. Improper installation may cause damage or serious injury. Do not use this product for any purpose that is not explicitly specified in this manual. Do not exceed weight capacity. We cannot be liable for damage or injury caused by improper mounting, incorrect assembly or inappropriate use.

PACKAGE CONTENTS



A (x1)
Mount



B (x1)
VESA Plate



C (x1)
Handle



D (x2)
VESA Bracket



E (x1)
Bracket



F (x2)
Arm



G (x1)
Bracket Cover



H (x2)
End Cap



I (x2)
Cable Clip



J (x1)
Upper Cover



K (x1)
Lower Cover



S-A (x4)
M6x30mm Screw



S-B (x2)
M5x10mm Screw



S-C (x4)
M5x16mm Screw



S-D (x4)
M5 Washer



M-A (x8)
M4x12mm Screw



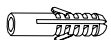
M-B (x8)
M5x12mm Screw



M-C (x8)
M5 Washer



W-A (x3)
ST6.3x55mm Screw



W-B (x3)
Concrete Anchor



W-C (x3)
M6 Washer



T-A (x1)
4mm Allen Wrench



T-B (x1)
6mm Allen Wrench



T-C (x1)
Wrench

TOOLS NEEDED



Drill



Phillips
Screwdriver



Pencil



Studfinder

DO NOT EXCEED WEIGHT CAPACITY.

Failure to do so may result in serious injury.



⚠ WARNING: CHOKING HAZARD

SMALL PARTS - NOT FOR CHILDREN UNDER 3 YEARS. ADULT SUPERVISION IS REQUIRED.

⚠ CAUTION!

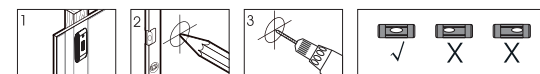
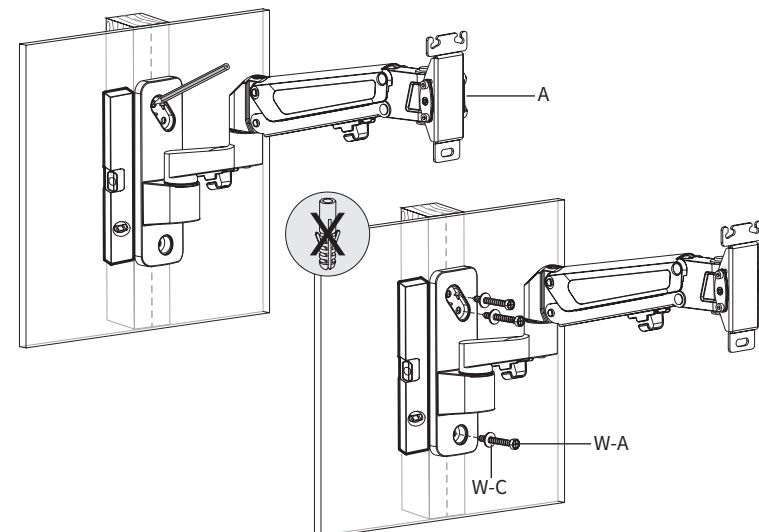
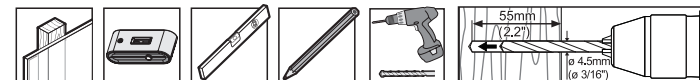
DO NOT INSTALL INTO DRYWALL ALONE. VERIFY YOUR CEILING CONSTRUCTION. USE WOOD STUDS TO MOUNT. We include mounting for concrete ceilings as well. If unsure, please contact us at vivo-us.com, email at help@vivo-us.com, or call us at 309-278-5303.

ASSEMBLY STEPS

STEP 1 (Option A)

Wood Stud Installation

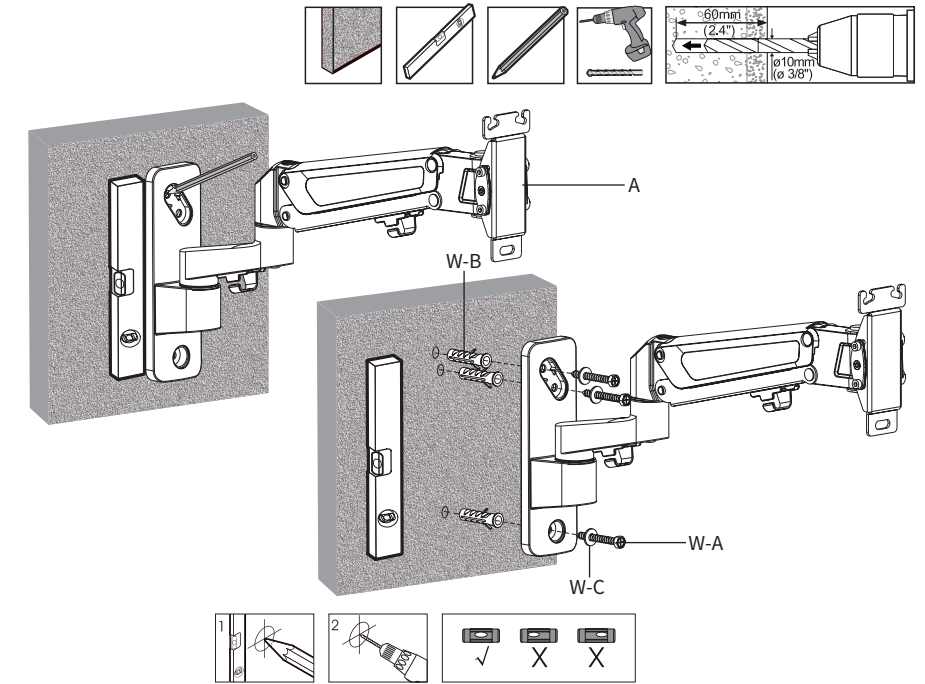
Hold Mount (**A**) in place along the stud and mark mounting holes using a pencil. Using a 3/16" (4.5mm) drill bit, drill holes in marked locations approximately 2.2" (55mm) deep. Secure Mount (**A**) to the wall using ST6.3x55mm Screw (**W-A**) with M6 Washers (**W-C**) and a Phillips screwdriver.



STEP 1 (Option B)

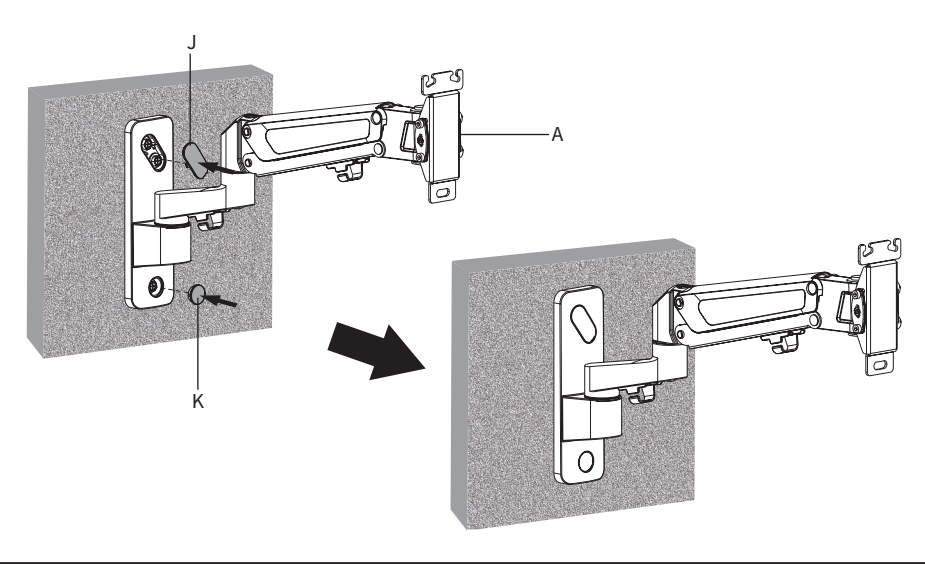
Concrete/Brick Wall Installation

Hold Mount (A) to mounting surface and mark drill holes with pencil. Drill 2.4" (60mm) deep holes using a 3/8" (10mm) drill bit. Insert Anchors (W-B) into predrilled holes and secure Mount (A) to the wall using ST6.3x55mm Screw (W-A) with M6 Washers (W-C) and a Phillips screwdriver.



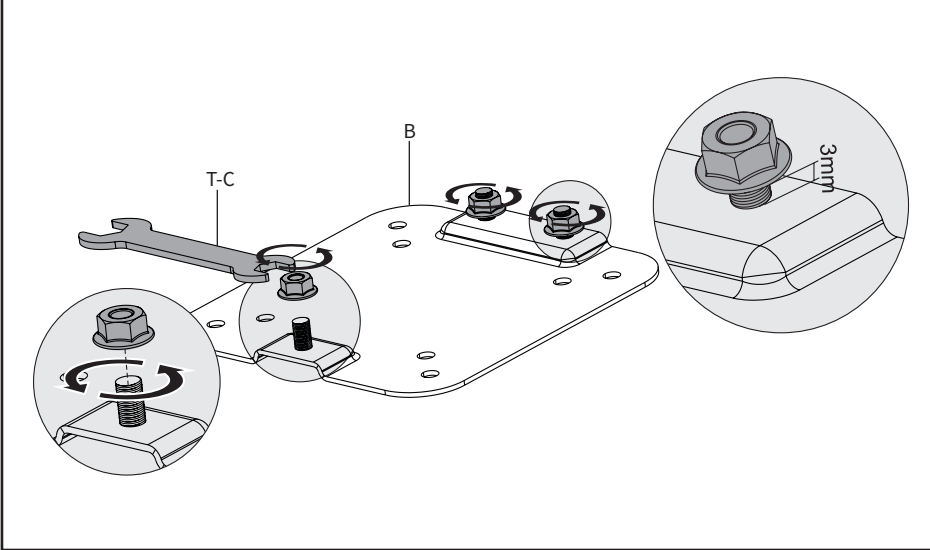
STEP 2

Insert Upper Cover (J) and Lower Cover (K) into the mounting holes on Mount (A).



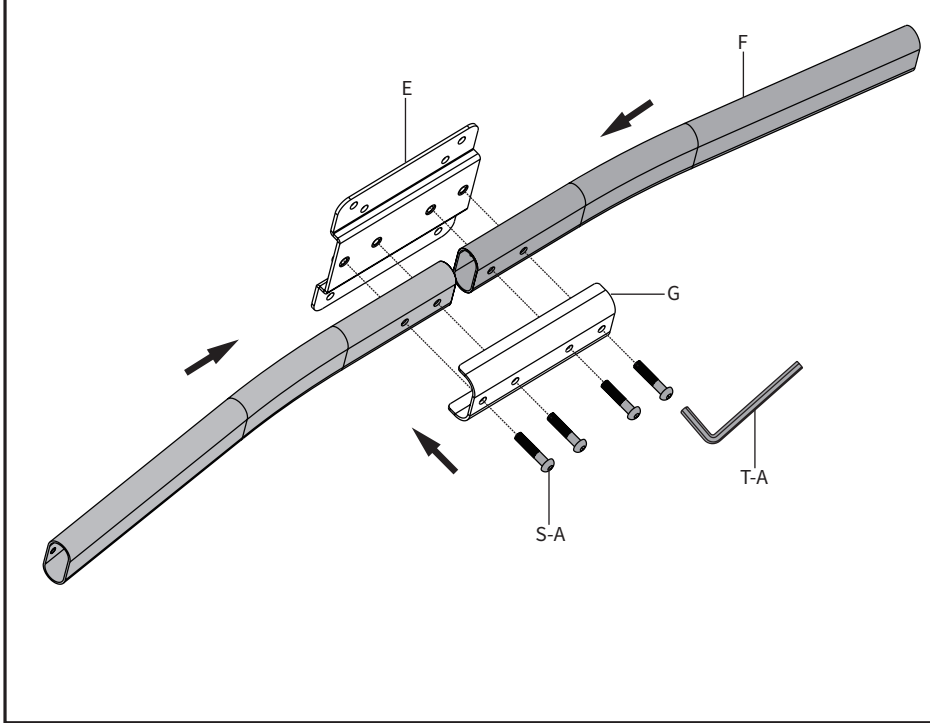
STEP 3

Remove the nut from the bottom of VESA Plate (B) using Wrench (T-C) and loosen the top two nuts, leaving 3mm of threads exposed.

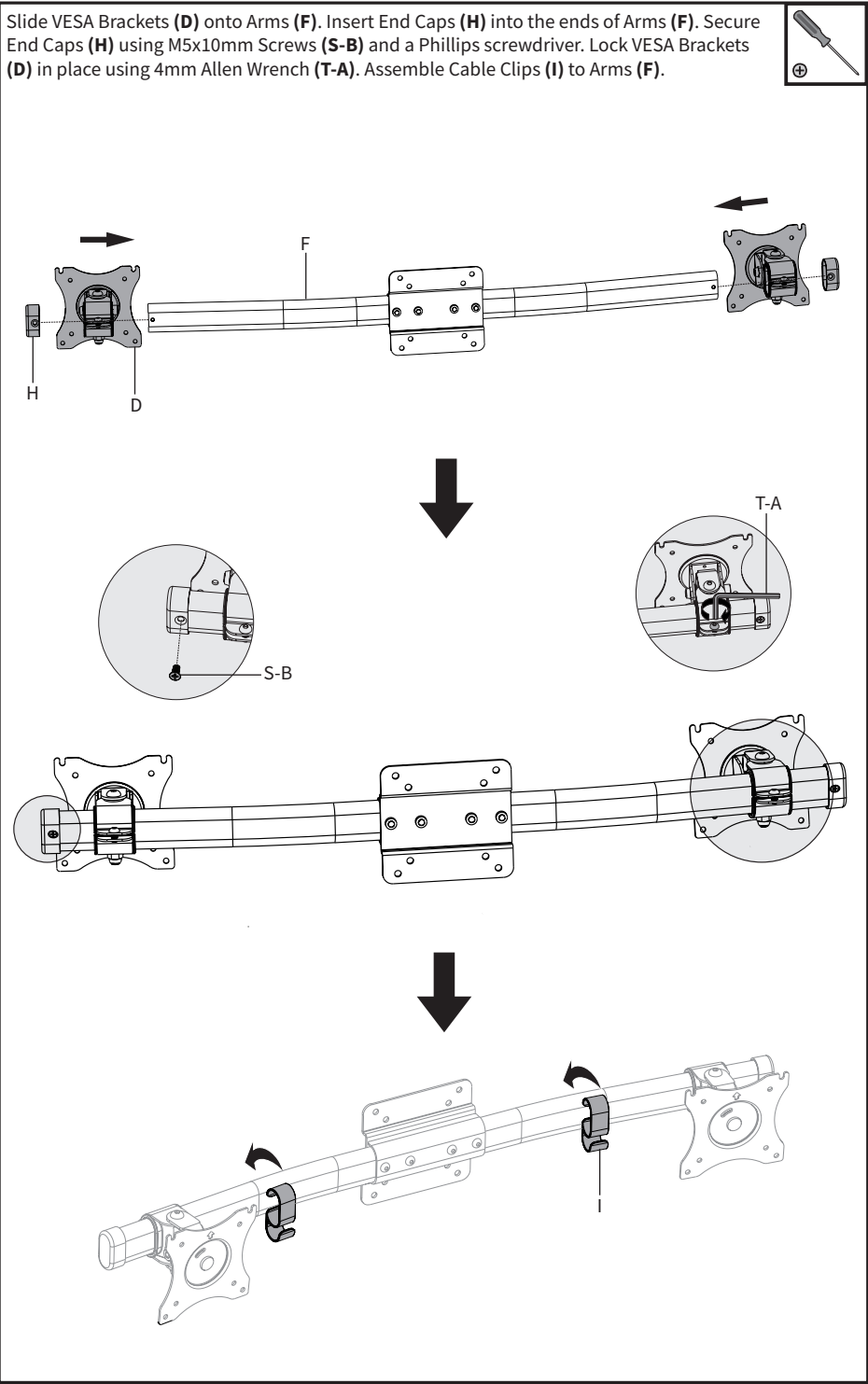


STEP 4

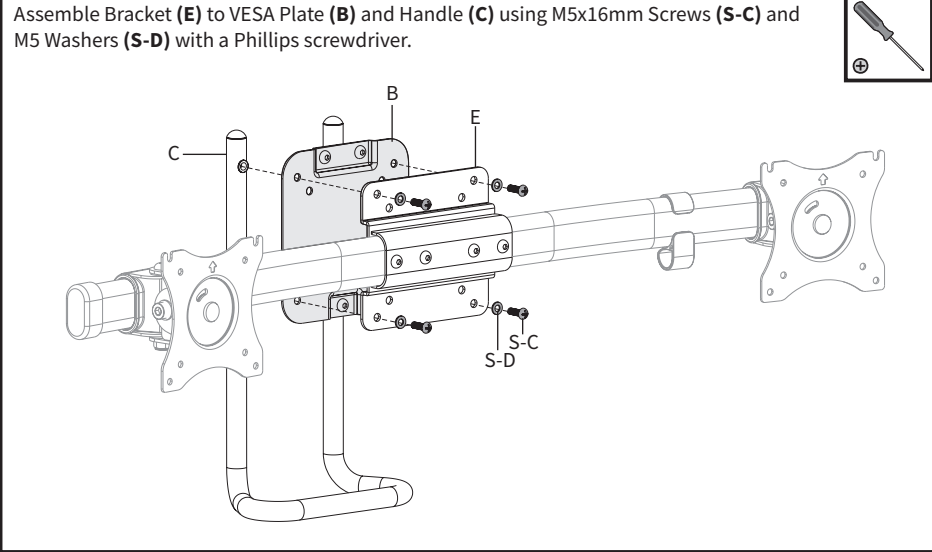
Assemble Arms (F) to Bracket (E) with Bracket Cover (G) using M6x30mm Screws (S-A) and 4mm Allen Wrench (T-A).



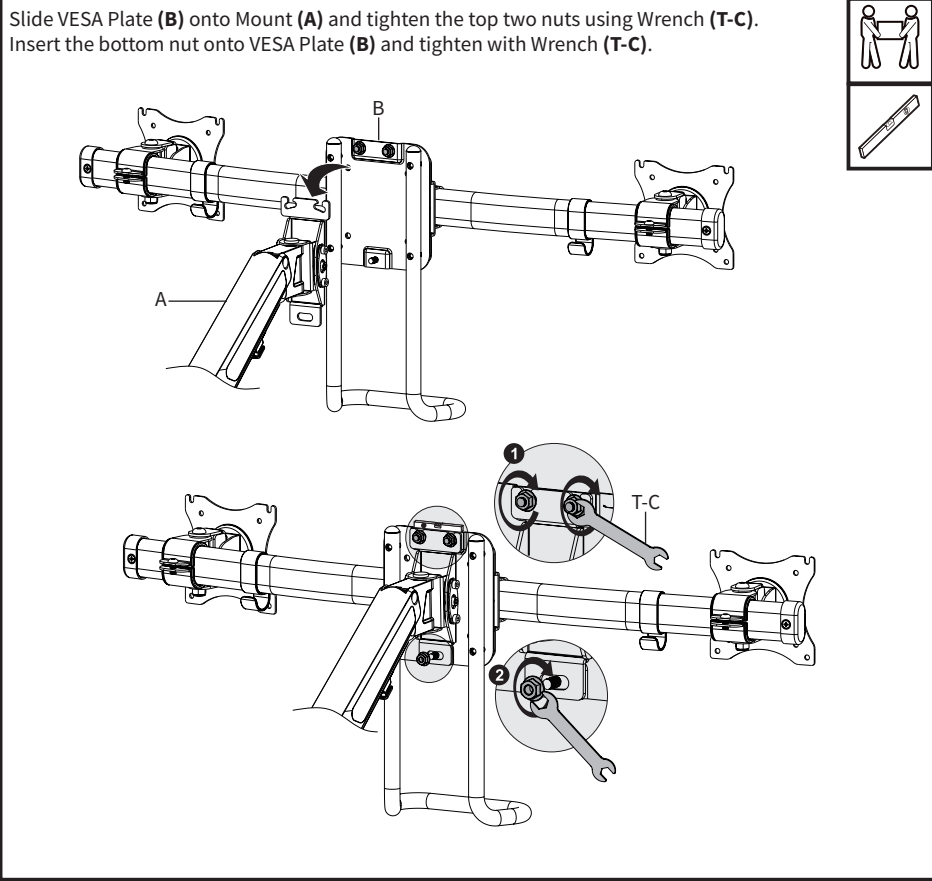
STEP 5



STEP 6

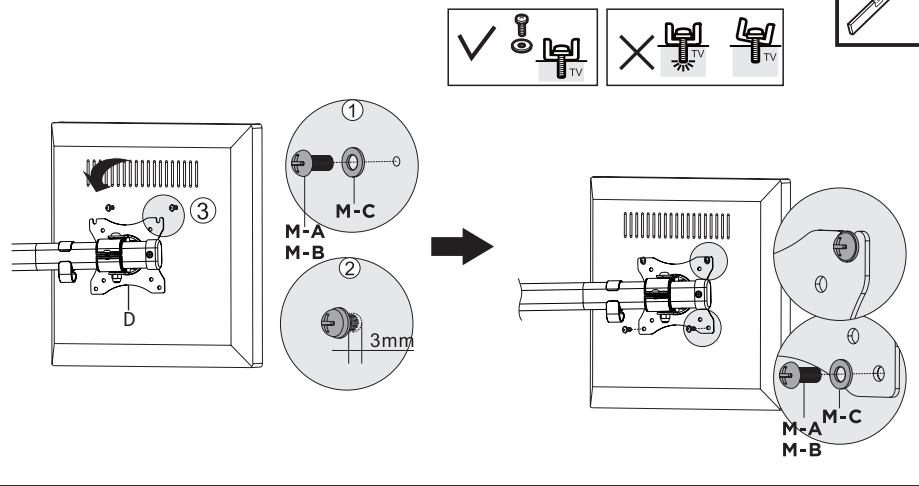


STEP 7



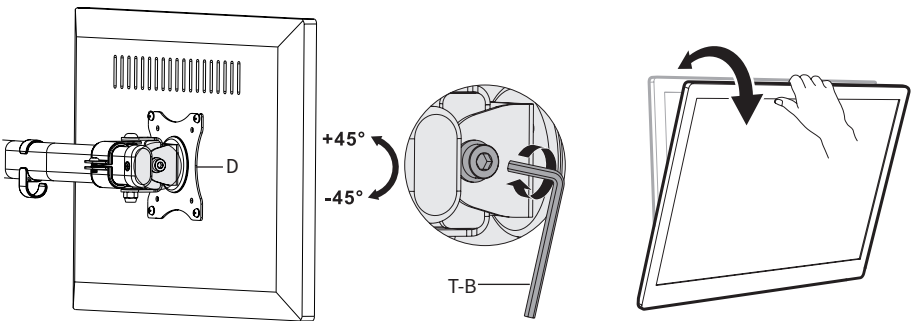
STEP 8

Insert Screws **(M-A or M-B)** with D5 Washers **(M-C)** into the top two holes of your monitor, leaving 3mm of space. Slide the monitors onto VESA Brackets **(D)** and insert Screws **(M-A or M-B)** with D5 Washers **(M-C)** into the bottom holes of your monitor. Tighten all screws with a Phillips screwdriver.



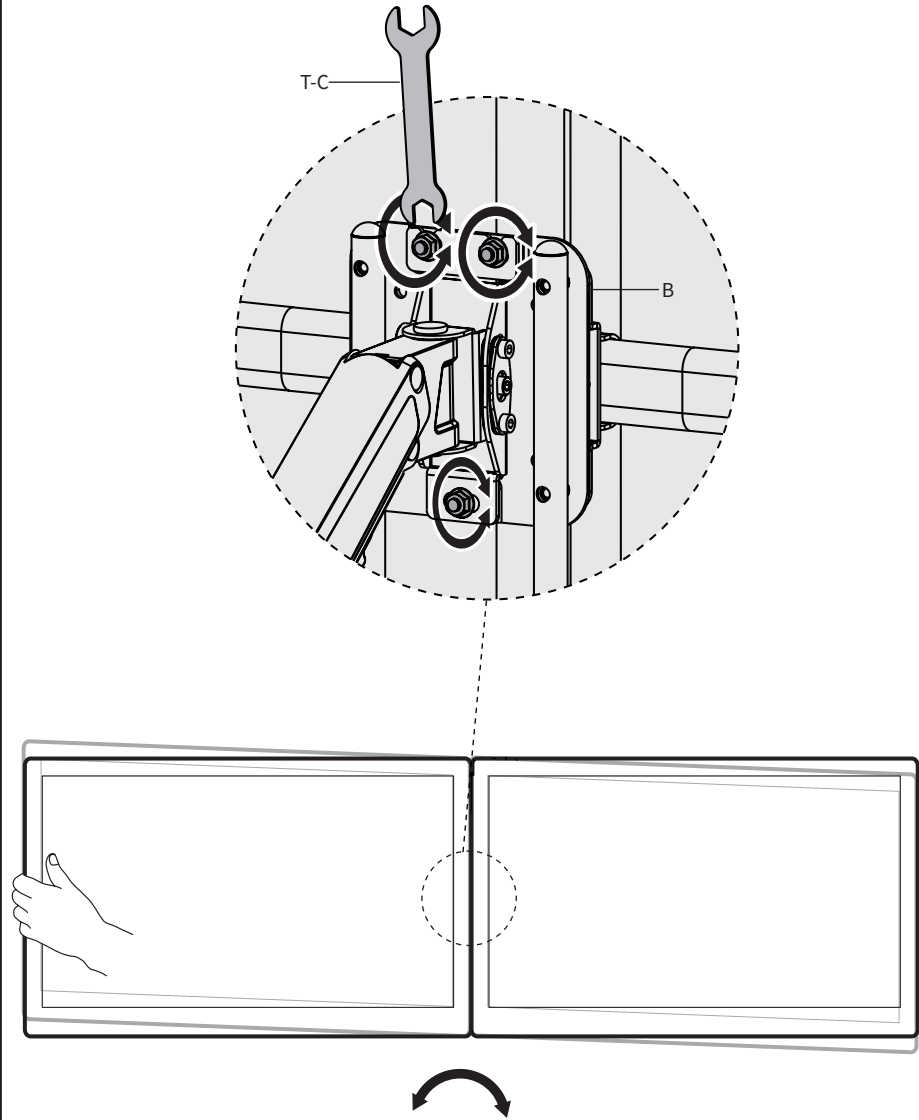
STEP 9

Adjust the tilt on VESA Brackets **(D)** using 6mm Allen Wrench **(T-B)**.

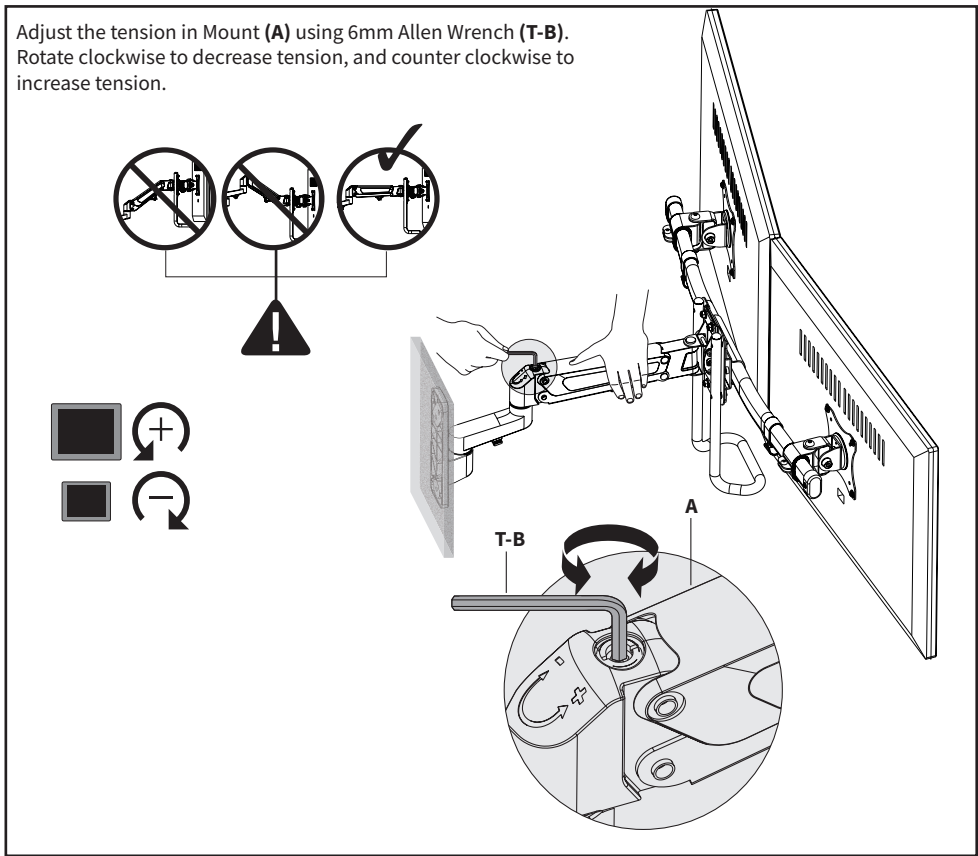


STEP 10

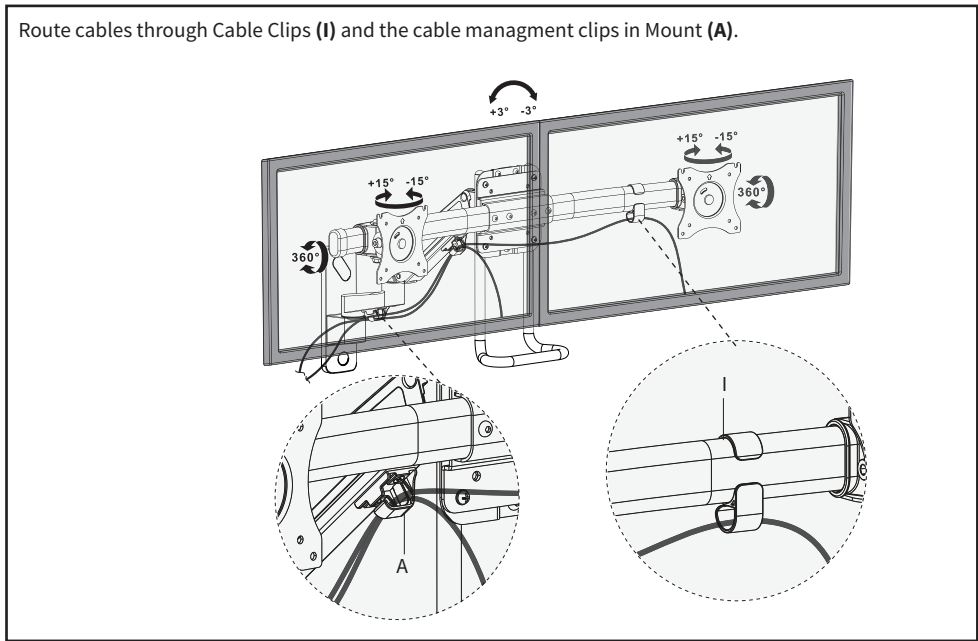
Level the monitors by adjusting the nuts on VESA Plate **(B)** using Wrench **(T-C)**.



STEP 11



STEP 11

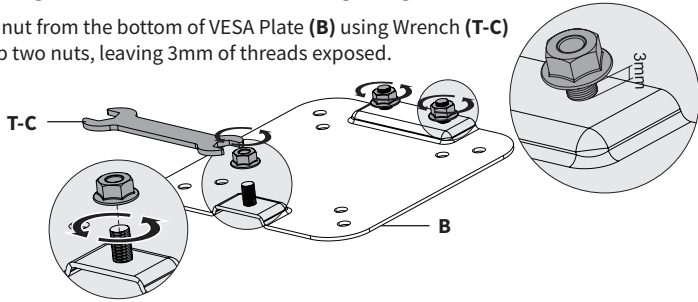


SINGLE MOUNT - ASSEMBLY STEPS

STEP 1

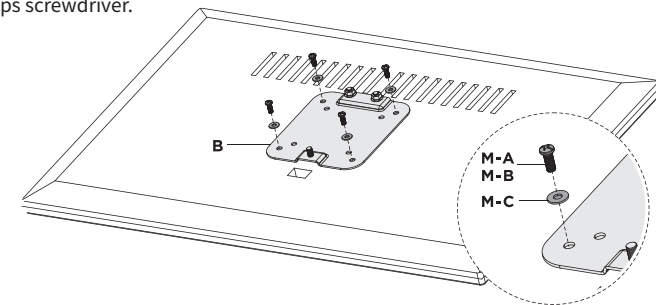
Follow wall mounting instructions in Steps 1 & 2 at beginning of manual.

Then, remove the nut from the bottom of VESA Plate (B) using Wrench (T-C) and loosen the top two nuts, leaving 3mm of threads exposed.



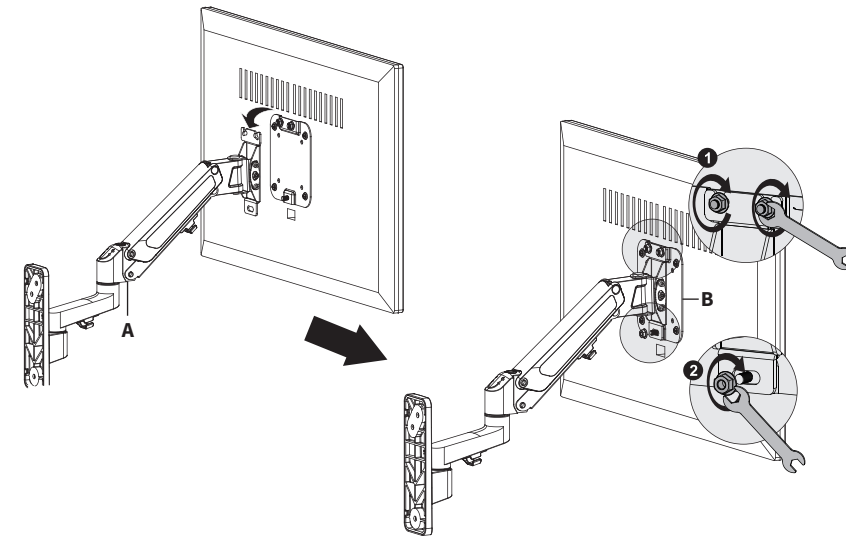
STEP 2

Install VESA Plate (B) to back of your monitor using appropriate Screws (M-A or M-B), M5 Washers (M-C), and a Phillips screwdriver.



STEP 3

Slide monitor onto Mount (A) and tighten the top two nuts using Wrench (T-C). Insert the previously removed bottom nut onto VESA Plate (B) and tighten with Wrench (T-C). Cables can be managed by routing through clips included on Mount (A).





Love your new VIVO setup and want to share?
Tag us in your photo! **@vivo_us**

LAST UPDATED: 03/31/2023

REV2



Open **Monday - Friday 7:00am - 7:00pm** CST,
our dedicated support team can offer immediate assistance with rapid response times. If any
parts are received damaged or defective, please contact us. We are happy to replace parts to
ensure you have a fully functioning product.



309-278-5303

AVG. RESOLUTION TIME (*within office hrs*): **5M 4S**



www.vivo-us.com
Chat live with an agent!

AVG. RESOLUTION TIME (*within office hrs*): **< 15 M**



help@vivo-us.com

AVG. RESPONSE TIME (*within office hrs*): **1HR 8M**

- 23% within < 15m
- 38% within < 30m
- 61% within < 1hr
- 83% within < 2hr
- 92% within < 3hr