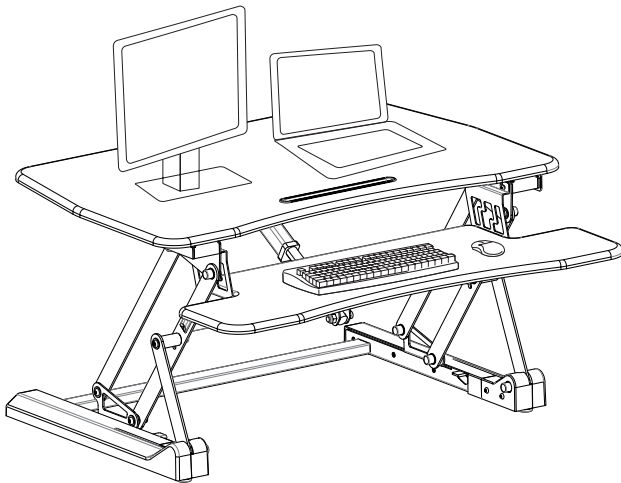




Black 36" Electric Desk Riser

Instruction Manual



SKU: DESK-V000EB



Scan the QR code with your mobile device or follow the link for helpful videos and specifications related to this product.

<https://vivo-us.com/products/desk-v000eb>



help@vivo-us.com



www.vivo-us.com



309-278-5303

WARNING!

If you do not understand these directions, or if you have any doubts about the safety of the installation, please call a qualified technician. Check carefully to make sure there are no missing or defective parts. Improper installation may cause damage or serious injury. Do not use this product for any purpose that is not explicitly specified in this manual and do not exceed weight capacity. We cannot be liable for damage or injury caused by improper mounting, incorrect assembly, or inappropriate use.

ELECTRICAL SAFETY INSTRUCTIONS

THIS PRODUCT IS POWERED BY ELECTRICITY. IN ORDER TO AVOID BURNS, FIRE AND ELECTRIC SHOCK, PLEASE READ THE FOLLOWING INSTRUCTIONS CAREFULLY.

- DO NOT CLEAN PRODUCT WHILE POWER IS CONNECTED.
- DO NOT DISASSEMBLE OR REPLACE COMPONENTS WHILE POWER IS CONNECTED.
- NEVER OPERATE THE SYSTEM WITH A DAMAGED CORD OR PLUG. PLEASE CONTACT YOUR SELLER TO REPLACE DAMAGED PARTS.
- NEVER OPERATE SYSTEM IN DAMP ENVIRONMENTS OR IF ANY ELECTRICAL COMPONENTS HAVE MADE CONTACT WITH LIQUIDS.
- ALTERATIONS OF THE GIVEN POWER UNIT ARE NOT ALLOWED.
- OUTDOOR USE IS PROHIBITED.

PACKAGE CONTENTS



A (x1)
Adjustable
Desktop



B (x2)
Bracket



C (x1)
Keyboard
Tray



D (x6)
Screw



E (x1)
4mm Alley Key



F (x1)
Cable Clip



G (x2)
Cable Tie



H (x1)
Power Cable

TOOLS NEEDED



Scissors



**Phillips
Screwdriver**

WARNING **PINCH POINT**

DO NOT place hands on or near support bars. Moving parts can crush and cut. Pinch points are created during lifting and lowering the worksurface. Failure to follow these instructions may result in serious personal injury.



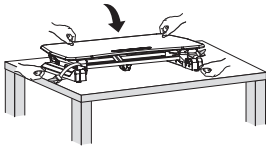
DO NOT EXCEED WEIGHT CAPACITY.
Failure to do so may result in serious injury.



ASSEMBLY STEPS

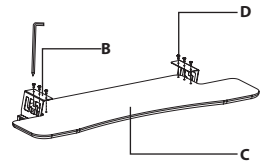
STEP 1

Carefully remove desktop (A) from packaging and set on table. Cut ties from desktop.



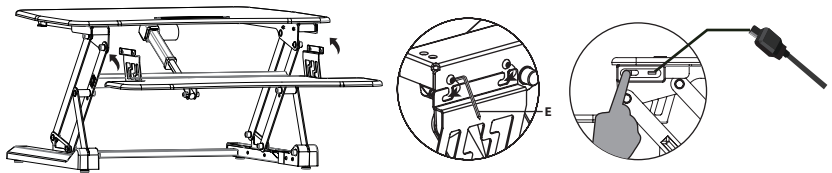
STEP 2

Secure brackets (B) to keyboard tray (C) using the six screws (D).



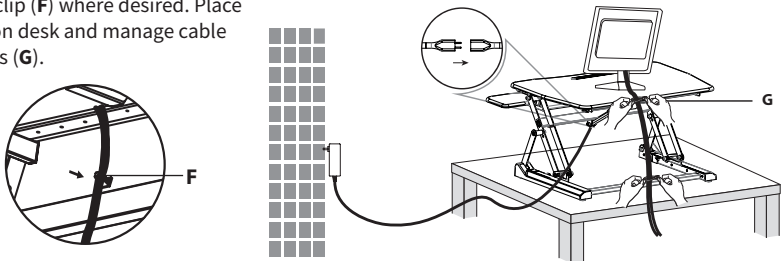
STEP 3

Plug the power cable (H) into the wall and press the switch on the right side to raise the desktop. Hang keyboard tray over pre-installed screws, and tighten screws using the allen key (E). The USB 2.0 port allows for charging phone, tablet, or other device.



STEP 4

Attach cable clip (F) where desired. Place the monitor on desk and manage cable with cable ties (G).



CAUTION!



Keep monitor and laptop base fully on the desktop.



Follow the cable routing instructions to avoid the potential to pinch cables.



Leave enough slack in cable to allow for full range of vertical motion (15" / 38 cm).



Raise desktop slowly to keep items stable.

Failure to follow these instructions may result in property damage and/or personal injury.



Love your new VIVO setup and want to share?

LAST UPDATED: 09/17/2019

Tag us in your photo! [@vivo_us](#)



Open **Monday-Friday from 7:00am-7:00pm CST**,
our dedicated support team can offer immediate assistance with rapid response times.
If any parts are received damaged or defective, please contact us.
We are happy to replace parts to ensure you have a fully functioning product.



help@vivo-us.com

AVG. RESPONSE TIME (*within office hrs*): **1HR 8M**

- 23% within < 15m
- 38% within < 30m
- 61% within < 1hr
- 83% within < 2hr
- 92% within < 3hr



www.vivo-us.com

AVG. RESOLUTION TIME (*within office hrs*): **< 15 M**



309-278-5303

AVG. RESOLUTION TIME (*within office hrs*): **5M 4S**

FOR MORE VIVO PRODUCTS, CHECK OUT OUR WEBSITE AT: www.vivo-us.com