

22" Versatile Desktop Shelf Riser

SKU: DESK-SHELF22B

Instruction Manual

Assembly Video & Product Info
www.vivo-us.com/products/desk-shelf15b



! CAUTION! !

If you do not understand these directions, or if you have any doubts about the safety of the installation, please contact our product support team at 309-278-5303 or help@vivo-us.com for further assistance. Check carefully to make sure there are no missing or defective parts. Improper installation may cause damage or serious injury. Do not use this product for any purpose that is not explicitly specified in this manual. Do not exceed weight capacity. We cannot be liable for damage or injury caused by improper mounting, incorrect assembly or inappropriate use.



WARNING: CHOKING HAZARD

SMALL PARTS - NOT FOR CHILDREN UNDER 3 YEARS. ADULT SUPERVISION IS REQUIRED.



DO NOT EXCEED WEIGHT CAPACITY

FAILURE TO DO SO MAY RESULT IN SERIOUS INJURY.

We're Here for You

Open **Monday - Friday 7:00am - 7:00pm CST**, our dedicated support team can offer immediate assistance with rapid response times. If any parts are received damaged or defective, please contact us. We are happy to replace parts to ensure you have a fully functioning product.



Give us a Call:
309-278-5303

AVG. RESOLUTION TIME (within office hrs): **5M 4S**



Chat Us:
www.vivo-us.com

AVG. RESOLUTION TIME (within office hrs): **< 15 M**



Email Us:
help@vivo-us.com

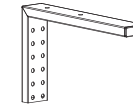
AVG. RESPONSE TIME (within office hrs): **1HR 8M**

- 23% within < 15m
- 38% within < 30m
- 61% within < 1hr
- 83% within < 2hr
- 92% within < 3hr

Package Contents



A (x1)
Shelf



B (x2)
L Bracket



C (x2)
Short Bracket



D (x2)
Clamp Screw



E (x2)
Clamp Brace



F (x2)
Clamp Plate



G (x2)
Clamp Pad



H (x4)
Foot Pad

Included Hardware & Tools



S-A (x2)
M4 Washer



S-B (x4)
M6x25mm Screw



S-C (x8)
M6x20mm Screw



S-D (x2)
M3x8mm Screw



S-E (x4)
M6 Washer



T-A (x1)
4mm Allen Wrench

Tools Needed:



**Phillips
Screwdriver**

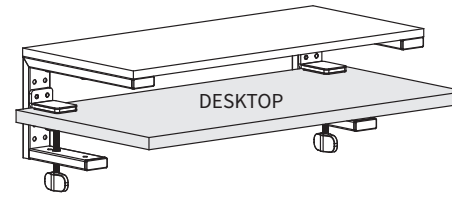
Weight Capacity:



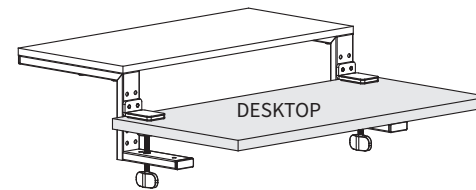
**44lbs
(20kg)**

ASSEMBLY OPTIONS:

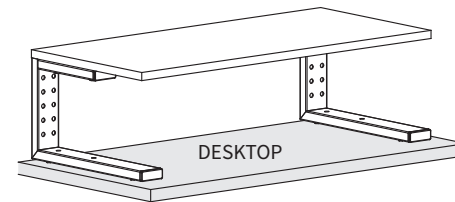
Desk Shelf Riser can be assembled in one of three ways. Choose an option below and follow the provided instructions for assembly.



Inward Facing | pg 6-9
Shelf clamps to desktop and sits above the clamps



Outward Facing | pg 10-13
Shelf clamps to desktop and extends away from clamps



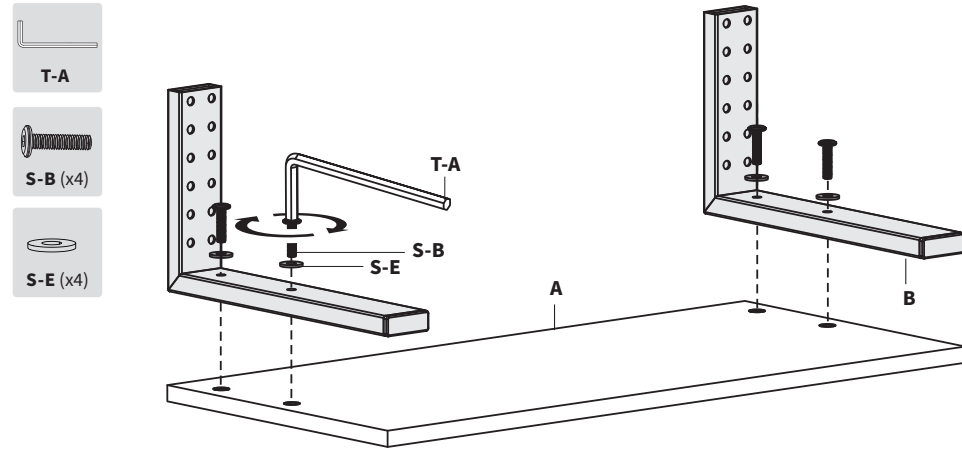
Freestanding | pg 14-15
Shelf sits on desktop; no clamps

-- Option 1 --

Inwardfacing Assembly

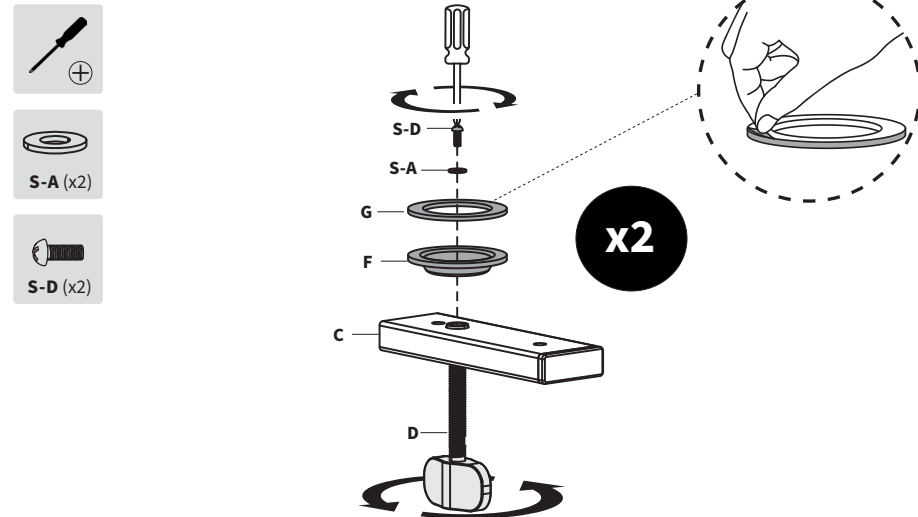
STEP 1

Secure L Brackets (**B**) to Shelf (**A**) using M6x25mm Screws (**S-B**), M6 Washers (**S-E**), and 4mm Allen Wrench (**T-A**).



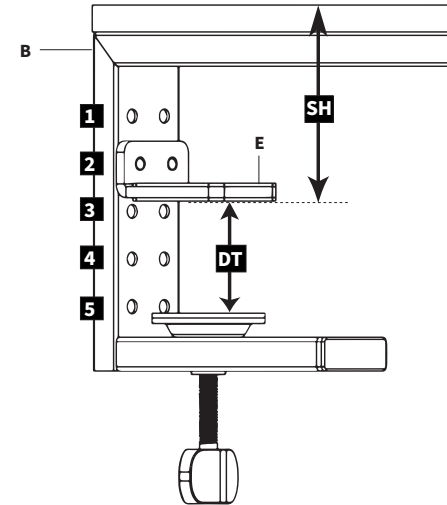
STEP 2

Insert Clamp Screw (**D**) through Short Bracket (**C**), then connect Clamp Plate (**F**) using M4 Washers (**S-A**), M3x8mm Screws (**S-D**), and a Phillips Screwdriver. Remove adhesive backing from Clamp Pad (**G**) and apply to Clamp Plate (**F**).



STEP 3

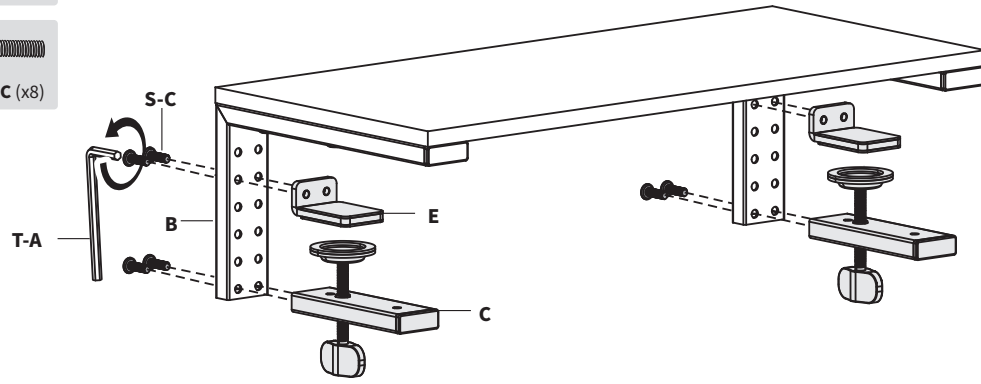
Clamp Braces (**E**) can be attached in various positions on L Brackets (**B**) depending on your desktop thickness and desired shelf height. Reference the table below to determine which installation holes to use for your desired shelf height.



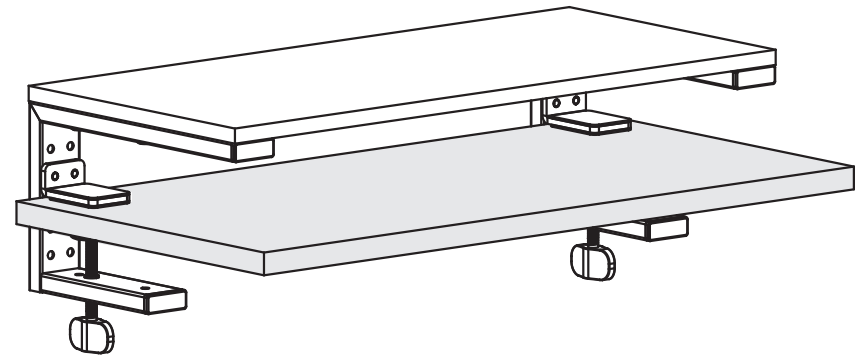
Hole Position	Desktop Thickness Range (DT)	Shelf Height from Desktop (SH)
1	0.80"-2.79" (21mm-71mm)	2.5" (65mm)
2	0.40"-1.96" (10mm-50mm)	3.4" (86mm)
3	0.40"-1.10" (10mm-29mm)	4.2" (107mm)
4	N/A	N/A
5	N/A	N/A

STEP 3b

Using the installation holes determined above, attach Short Brackets (C) and Clamp Braces (E) to L Brackets (B) using M6x20mm Screws (S-C) and 4mm Allen Wrench (T-A).

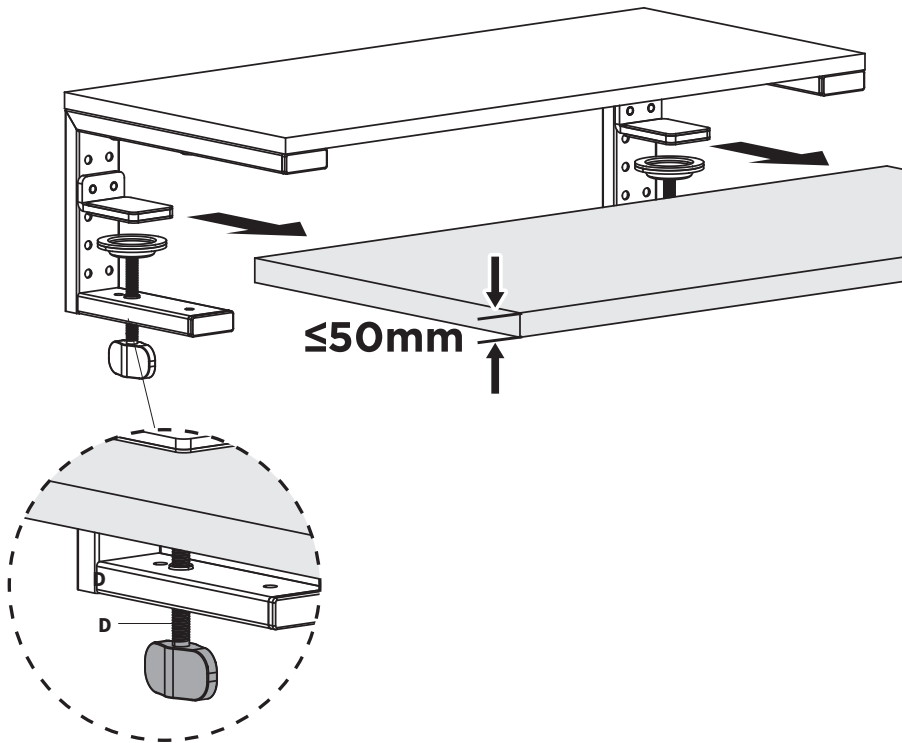


Assembly Complete!



STEP 4

Slide shelf assembly onto desk surface. Tighten Clamp Screw (D) to secure.



-- Option 2 --

Outward Facing Assembly

STEP 1

Secure L Brackets (**B**) to Shelf (**A**) using M6x25mm Screws (**S-B**), M6 Washers (**S-E**), and 4mm Allen Wrench (**T-A**).



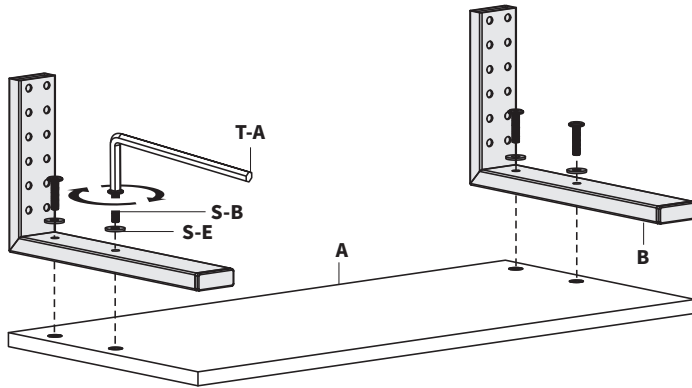
T-A



S-B (x4)



S-E (x4)



STEP 2

Insert Clamp Screw (**D**) through Short Bracket (**C**), then connect Clamp Plate (**F**) using M4 Washers (**S-A**), M3x8mm Screws (**S-D**), and a Phillips Screwdriver. Remove adhesive backing from Clamp Pad (**G**) and apply to Clamp Plate (**F**).



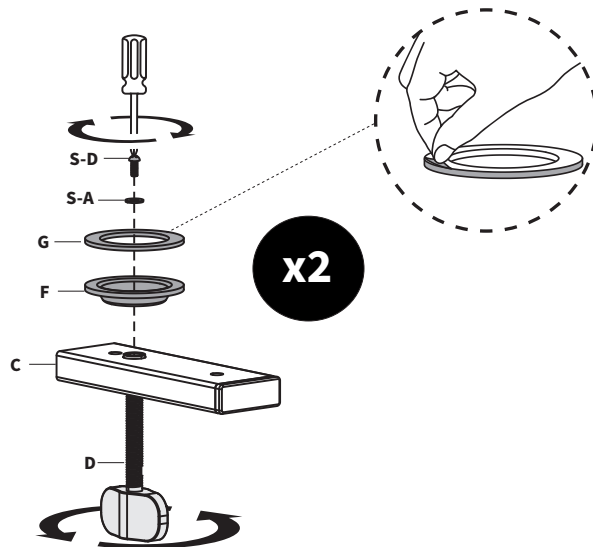
+



S-A (x2)

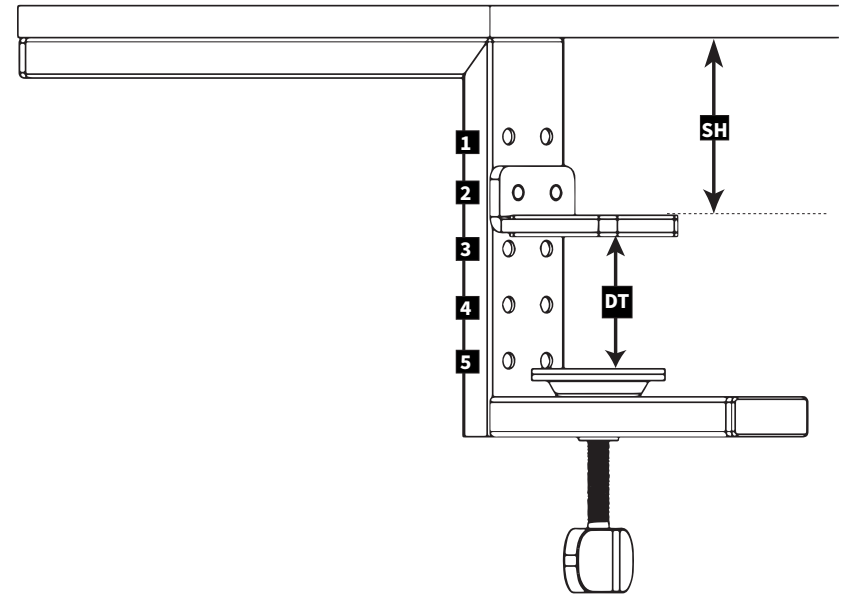


S-D (x2)



STEP 3

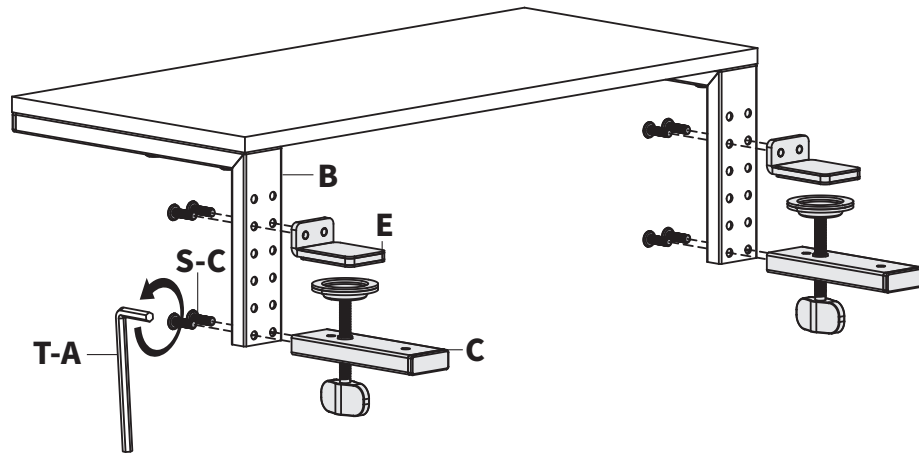
Clamp Braces (**E**) can be attached in various positions on L Brackets (**B**) depending on your desktop thickness and desired shelf height. Reference the table below to determine which installation holes to use for your desired shelf height.



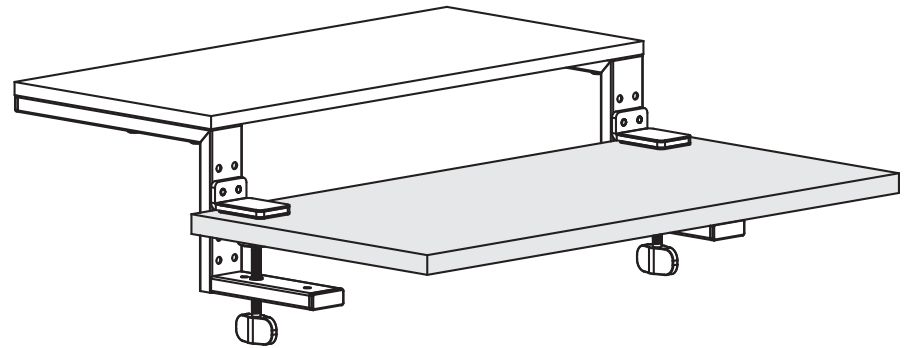
Hole Position	Desktop Thickness Range (DT)	Shelf Height from Desktop (SH)
1	0.80"-2.79" (21mm-71mm)	2.5" (65mm)
2	0.40"-1.96" (10mm-50mm)	3.4" (86mm)
3	0.40"-1.10" (10mm-29mm)	4.2" (107mm)
4	N/A	N/A
5	N/A	N/A

STEP 3b

Using the installation holes determined above, attach Short Brackets (C) and Clamp Braces (E) to L Brackets (B) using M6x20mm Screws (S-C) and 4mm Allen Wrench (T-A).

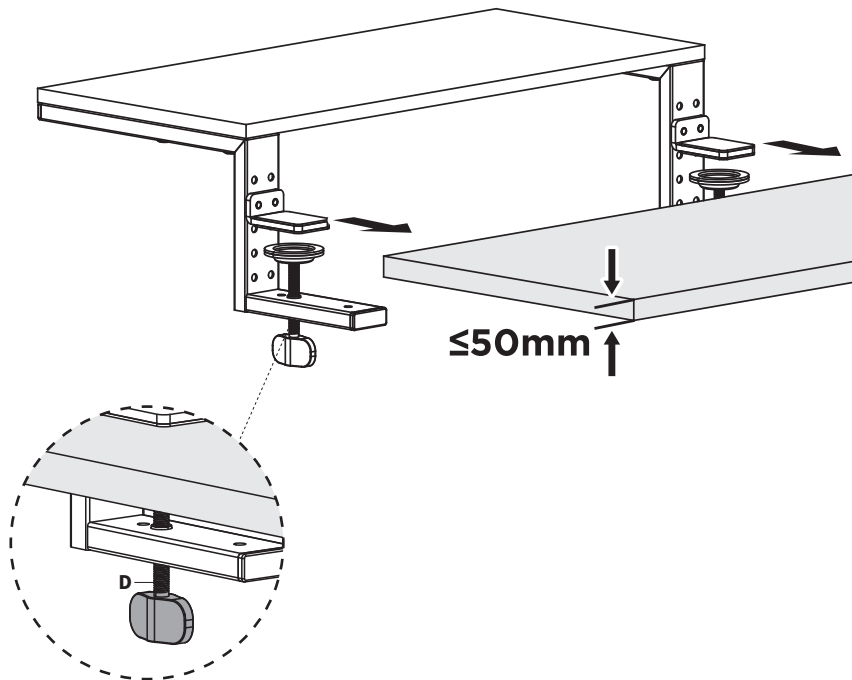


Assembly Complete!



STEP 4

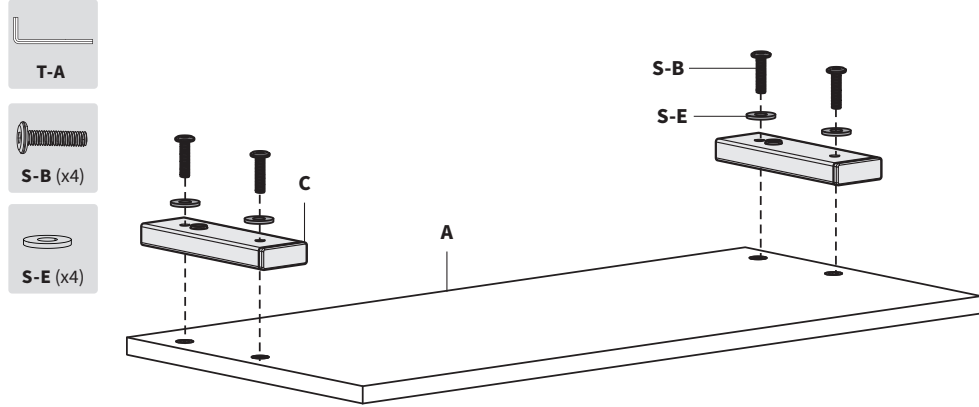
Slide shelf assembly onto desk surface. Tighten Clamp Screw (D) to secure.



-- Option 3 --
Freestanding Assembly

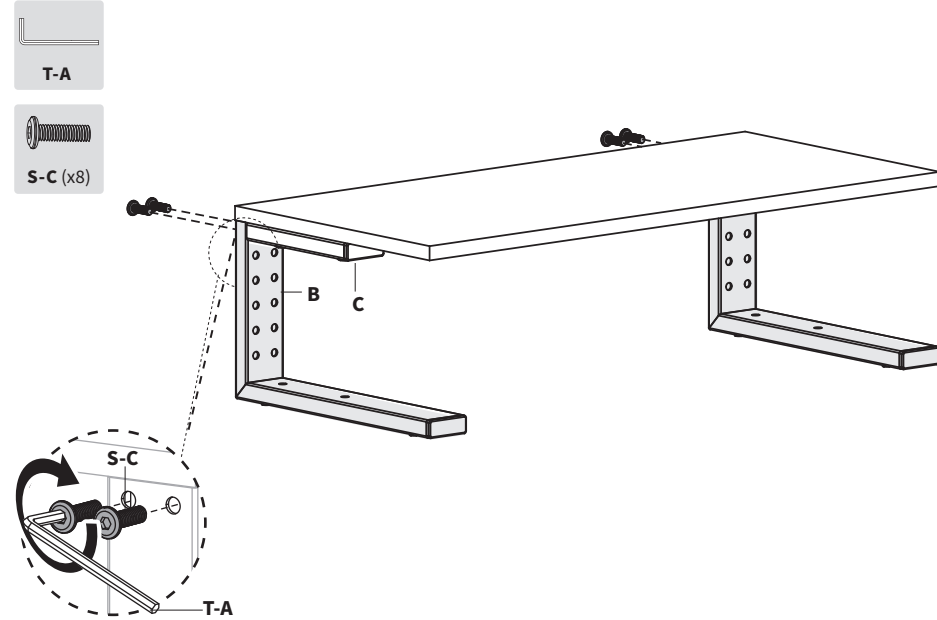
STEP 1

Secure Short Brackets (C) to Shelf (A) using M6x25mm Screws (S-B), M6 Washers (S-E), and 4mm Allen Wrench (T-A).



STEP 3

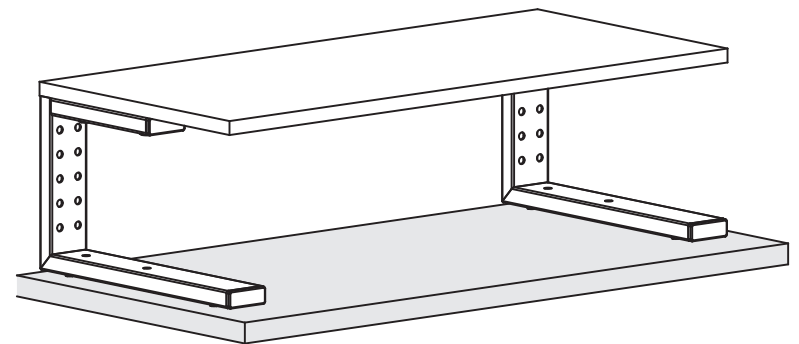
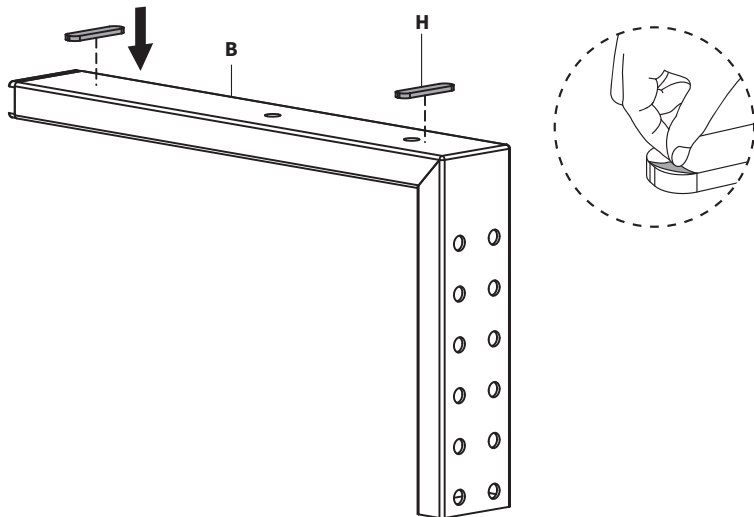
Secure L Brackets (B) to Short Brackets (C) using M6x20mm Screws (S-C) and 4mm Allen Wrench (T-A).



Assembly Complete!

STEP 2

Apply Foot Pads (H) to the long underside of L Brackets (B).



LAST UPDATED: 10/16/23

REV2

v2.0



Need Help? Get In Touch

Monday-Friday from 7:00am-7:00pm CST



help@vivo-us.com



www.vivo-us.com

Chat live with an agent!



309-278-5303



VIVO-us



@vivo_us

FOR MORE GREAT VIVO PRODUCTS,
CHECK OUT OUR WEBSITE AT: WWW.VIVO-US.COM