



Under Desk Storage Drawer with Mouse Platform Instruction Manual



SKU: DESK-AC05M



Scan the QR code with your mobile device or follow the link for helpful videos and specifications related to this product.

<https://vivo-us.com/products/desk-ac05m>

GET IN TOUCH | Monday-Friday from 7:00am-7:00pm CST



help@vivo-us.com



www.vivo-us.com
Chat live with an agent!



309-278-5303

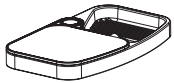
WARNING!

If you do not understand these directions, or if you have any doubts about the safety of the installation, please call a qualified technician. Check carefully to make sure there are no missing or defective parts. Improper installation may cause damage or serious injury. Do not use this product for any purpose that is not explicitly specified in this manual and do not exceed weight capacity. We cannot be liable for damage or injury caused by improper mounting, incorrect assembly, or inappropriate use.

WARNING: CHOKING HAZARD

SMALL PARTS - NOT FOR CHILDREN UNDER 3 YEARS. ADULT SUPERVISION IS REQUIRED.

PACKAGE CONTENTS



A (x1)
Tray



B (x1)
Support Post



C (x1)
Drill Template



D (x1)
Cable Clip



S-A (x3)
ST4.2x30mm
Screw

TOOLS NEEDED

NOTE: SOME HARDWARE INCLUDED MAY NOT BE USED



Scissors



Phillips
Screwdriver



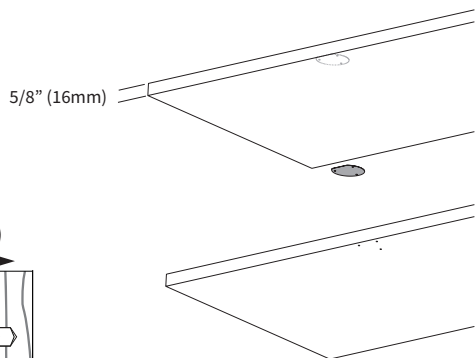
DO NOT EXCEED WEIGHT CAPACITY.

Failure to do so may result in serious injury.

ASSEMBLY STEPS

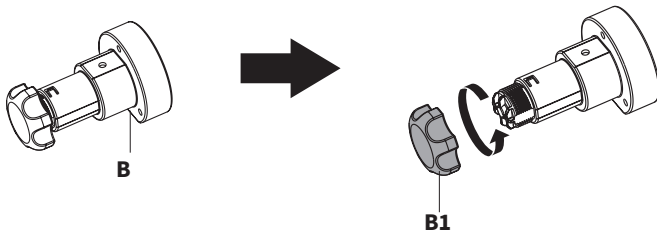
STEP 1

Place the Drill Template (**C**) on the underside of the desktop, making sure the flat side is flush with the edge, and mark drilling locations with a pencil. Drill 15mm (0.6") deep holes using a 3mm (3/25") drill bit.

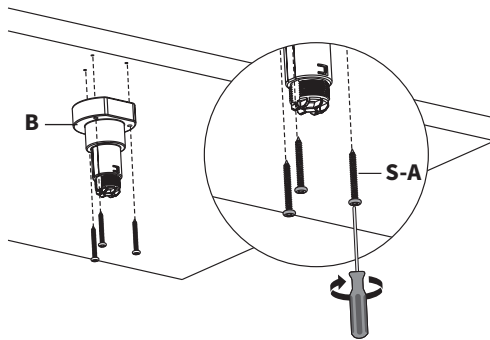


STEP 2

Unscrew the Knob (**B1**) from the Support Post (**B**) and set aside.

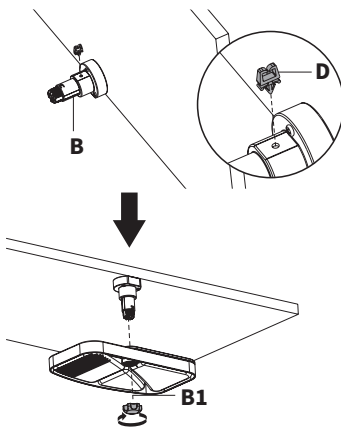


Making sure the flat side is facing forward, mount the Support Post (**B**) to the desktop using ST4.2x30mm Screws (**S-A**).



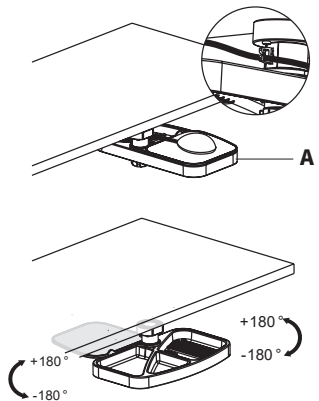
STEP 3

Snap the Cable Clip (**D**) into the back of the Support Post (**B**). Attach the Tray (**A**) to the post using the previously removed Knob (**B1**).



STEP 4

Place mouse on the Tray (**A**). If the mouse is wired, use the cable clip to organize the wire. Swivel the mousepad on top to open the tray for storage. The tray may be swiveled underneath the desktop when not in use.





Open **Monday - Friday 7:00am - 7:00pm** CST,
our dedicated support team can offer immediate assistance with rapid response times. If any parts are received damaged or defective, please contact us. We are happy to replace parts to ensure you have a fully functioning product.

 309-278-5303 **AVG. RESOLUTION TIME** (*within office hrs*): **5M 4S**

 www.vivo-us.com **AVG. RESOLUTION TIME** (*within office hrs*): **< 15 M**
Chat live with an agent!

 help@vivo-us.com **AVG. RESPONSE TIME** (*within office hrs*): **1HR 8M**
- 23% within < 15m
- 38% within < 30m
- 61% within < 1hr
- 83% within < 2hr
- 92% within < 3hr