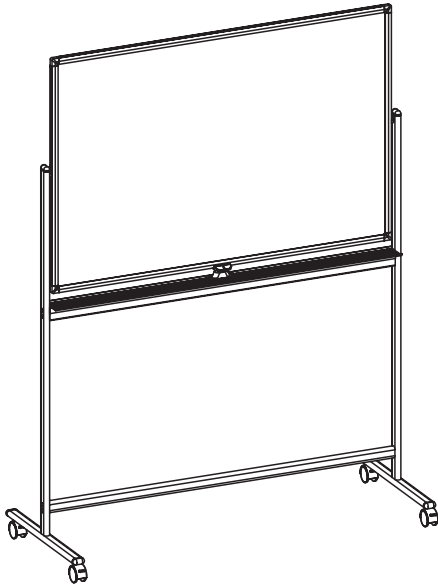




---

## 48" x 32" Mobile Double Sided Whiteboard Instruction Manual



**SKU: CART-WB48A**



Scan the QR code with your mobile device or follow the link for helpful videos and specifications related to this product.

<https://vivo-us.com/products/cart-wb48a>

---

GET IN TOUCH | Monday-Friday from 7:00am-7:00pm CST



help@vivo-us.com



www.vivo-us.com  
*Chat live with an agent!*



309-278-5303

## **WARNING!**

If you do not understand these directions, or if you have any doubts about the safety of the installation, please call a qualified technician. Check carefully to make sure there are no missing or defective parts. Improper installation may cause damage or serious injury. Do not use this product for any purpose that is not explicitly specified in this manual. Do not exceed weight capacity. We cannot be liable for damage or injury caused by improper mounting, incorrect assembly or inappropriate use.

## **TIPOVER WARNING**

SERIOUS OR FATAL CRUSHING INJURIES CAN OCCUR FROM TIPOVER. TO HELP PREVENT TIPOVER:

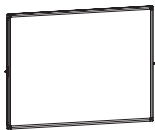
- NEVER ALLOW CHILDREN TO CLIMB, STAND, HANG, OR PLAY ON ANY PART OF CART.
- USE TIPOVER RESTRAINT OR ANCHOR CART TO WALL

**USE OF TIPOVER RESTRAINTS MAY ONLY REDUCE, BUT NOT ELIMINATE RISK OF TIPOVER.**

## **WARNING: CHOKING HAZARD**

SMALL PARTS - NOT FOR CHILDREN UNDER 3 YEARS. ADULT SUPERVISION IS REQUIRED.

## PACKAGE CONTENTS



**A (x1)**  
Board



**B (x2)**  
Vertical Support



**C (x2)**  
Feet



**D (x1)**  
Base Support



**E (x1)**  
Mid Support



**F (x1)**  
Marker Tray



**G (x1)**  
Rotation Lock



**H (x4)**  
Caster



**I (x1)**  
5mm Allen Wrench



**J (x1)**  
Wrench



**K (x2)**  
Pole Cap



**L (x8)**  
Bolt Cap



**M (x12)**  
M6x30mm Bolt



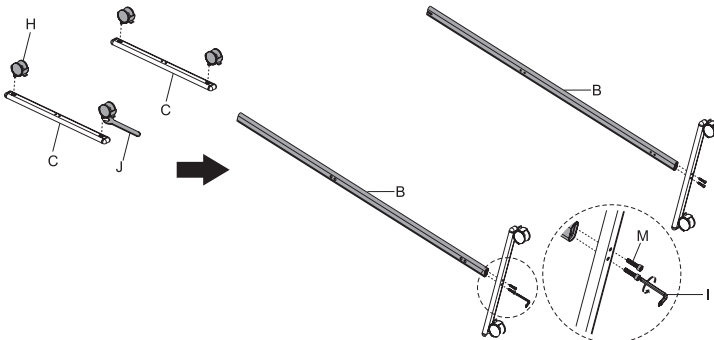
**N (x4)**  
M4x16mm Screw

**NOTE: NOT ALL HARDWARE INCLUDED WILL BE USED**

## ASSEMBLY STEPS

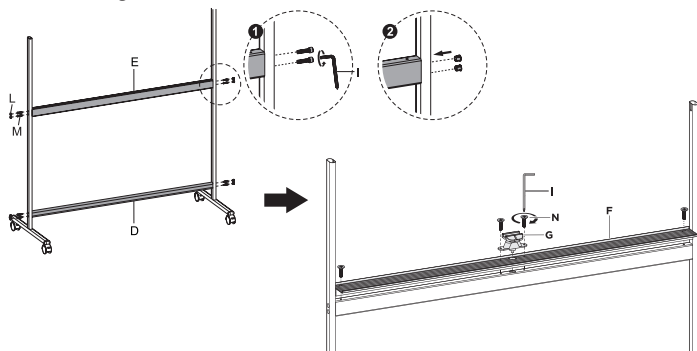
### STEP 1

Fasten casters (**H**) to feet (**C**) using the wrench (**J**). Install feet to vertical supports (**B**) using M6x30mm bolts (**M**) and tighten with the 5mm Allen Wrench (**I**).



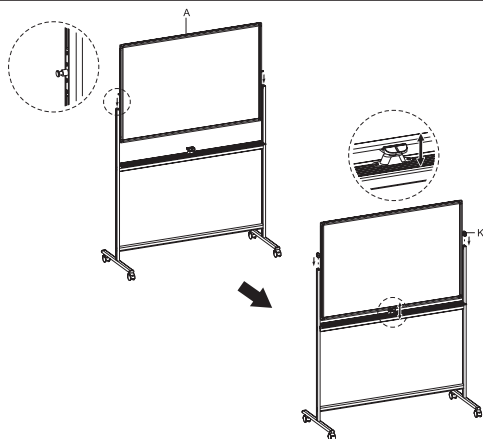
## STEP 2

Fasten mid support **(E)** and base support **(D)** to vertical supports using M6x30mm bolts **(M)**. Tighten with the 5mm Allen Wrench **(I)**. Press the bolt caps **(L)** into holes to cover bolts. Assemble marker tray **(F)** to mid support using a M4x16 screw **(N)** at each end. Attach rotation lock **(G)** to marker tray and mid support using M4x16 screws. Tighten all screws with 5mm Allen Wrench **(I)**.



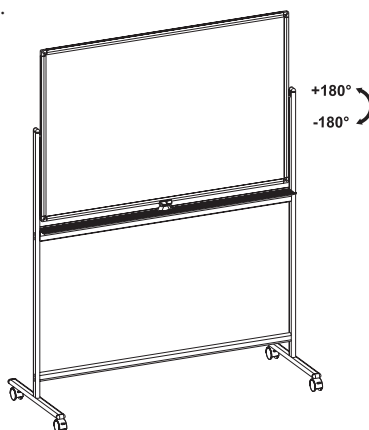
## STEP 3

Slide board **(A)** into frame. Cover open ends of vertical supports using pole caps **(K)**.



## STEP 4

Push the rotation lock down to release and rotate board.





Open **Monday - Friday 7:00am - 7:00pm** CST,  
our dedicated support team can offer immediate assistance with rapid response times. If any parts are received damaged or defective, please contact us. We are happy to replace parts to ensure you have a fully functioning product.



309-278-5303

**AVG. RESOLUTION TIME** (*within office hrs*): **5M 4S**



[www.vivo-us.com](http://www.vivo-us.com)  
*Chat live with an agent!*

**AVG. RESOLUTION TIME** (*within office hrs*): **< 15 M**



[help@vivo-us.com](mailto:help@vivo-us.com)

**AVG. RESPONSE TIME** (*within office hrs*): **1HR 8M**

- 23% within < 15m
- 38% within < 30m
- 61% within < 1hr
- 83% within < 2hr
- 92% within < 3hr