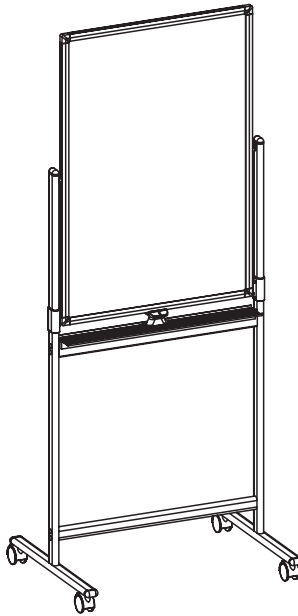


24" x 36" Mobile Double Sided Whiteboard

Instruction Manual



SKU: CART-WB24A



Scan the QR code with your mobile device or follow the link for helpful videos and specifications related to this product.

<https://vivo-us.com/products/cart-wb24a>

GET IN TOUCH | Monday-Friday from 7:00am-7:00pm CST



help@vivo-us.com



www.vivo-us.com
Chat live with an agent!



309-278-5303

WARNING!

If you do not understand these directions, or if you have any doubts about the safety of the installation, please call a qualified technician. Check carefully to make sure there are no missing or defective parts. Improper installation may cause damage or serious injury. Do not use this product for any purpose that is not explicitly specified in this manual. Do not exceed weight capacity. We cannot be liable for damage or injury caused by improper mounting, incorrect assembly or inappropriate use.

TIPOVER WARNING

SERIOUS OR FATAL CRUSHING INJURIES CAN OCCUR FROM TIPOVER. TO HELP PREVENT TIPOVER:

- NEVER ALLOW CHILDREN TO CLIMB, STAND, HANG, OR PLAY ON ANY PART OF CART.
- USE TIPOVER RESTRAINT OR ANCHOR CART TO WALL

USE OF TIPOVER RESTRAINTS MAY ONLY REDUCE, BUT NOT ELIMINATE RISK OF TIPOVER.

WARNING: CHOKING HAZARD

SMALL PARTS - NOT FOR CHILDREN UNDER 3 YEARS. ADULT SUPERVISION IS REQUIRED.

PACKAGE CONTENTS



A (x1)
Board



B (x2)
Lower Vertical
Support



C (x2)
Upper Vertical
Support



D (x2)
Support
Connector



E (x8)
M4



F (x2)
Foot



G (x1)
Base Support



H (x1)
Mid Support



I (x1)
Marker Tray



J (x1)
Rotation Lock



K (x4)
Caster



L (x1)
5mm Allen Wrench



M (x1)
Wrench



N (x2)
Pole Cap



O (x8)
Bolt Cap



P (x12)
M6x30mm



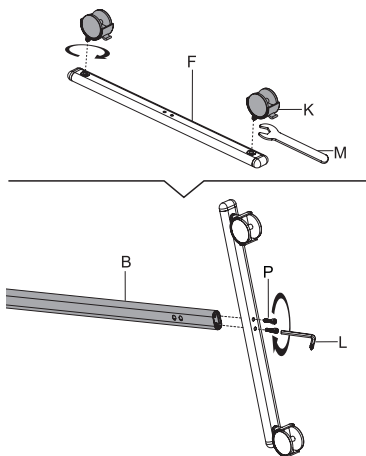
Q (x2)
M4x16mm

NOTE: NOT ALL HARDWARE INCLUDED WILL BE USED

ASSEMBLY STEPS

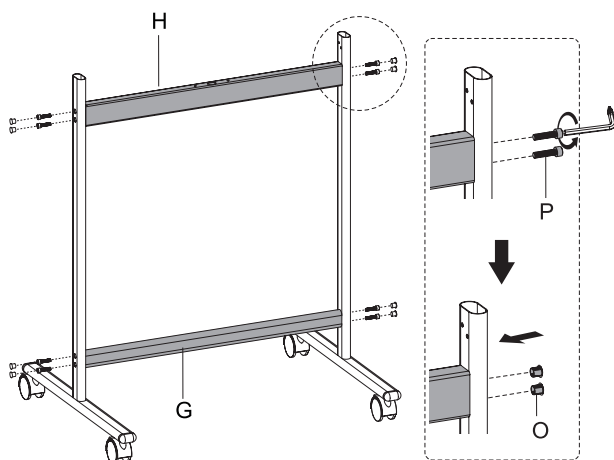
STEP 1

Fasten casters (**K**) to feet (**F**) using the wrench (**M**). Install feet to lower vertical supports (**B**) using M6x30mm bolts (**P**) and tighten with the 5mm Allen wrench (**L**).



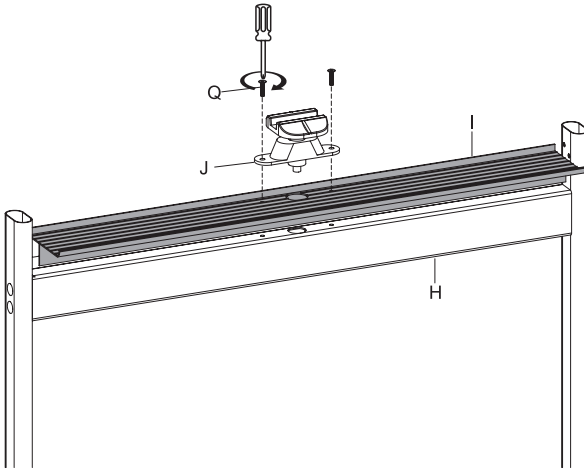
STEP 2

Assemble mid support (**H**) and base support (**G**) to vertical supports using M6x30mm bolts (**P**) and tighten with the Allen wrench (**L**). Press the bolt caps (**O**) into holes to cover bolts.



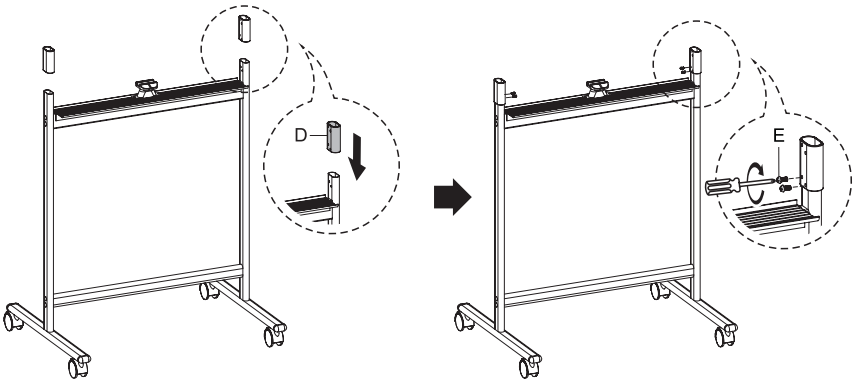
STEP 3

Attach marker tray (**I**) and rotation lock (**J**) to mid support using M4x16mm screws (**Q**). Tighten screws with a Phillips screwdriver.



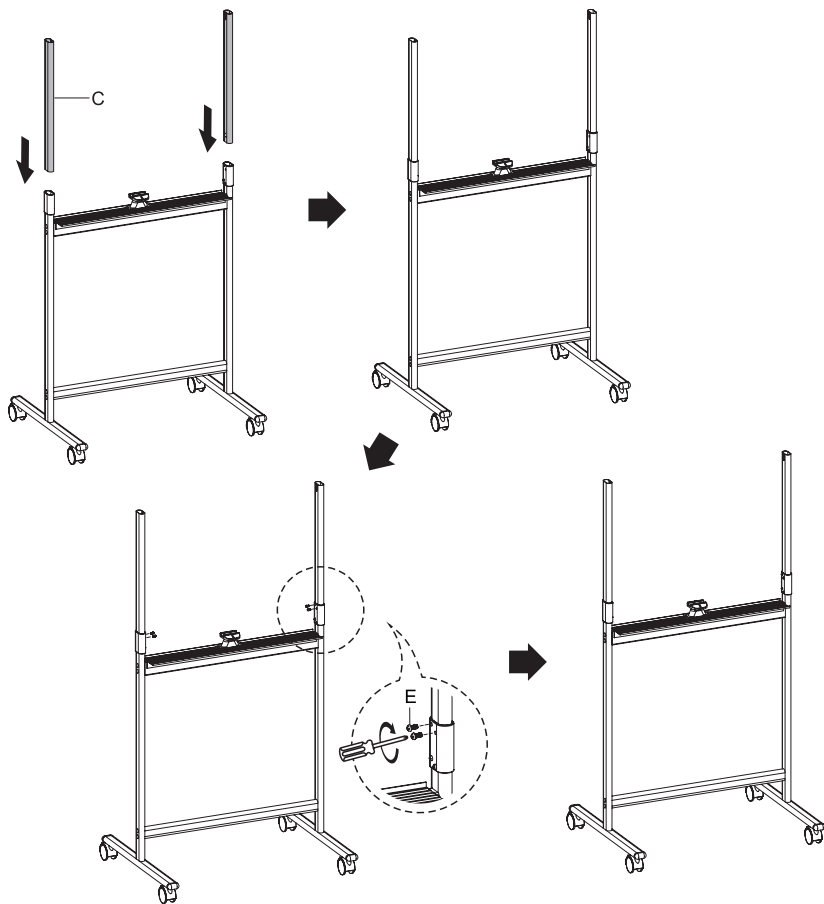
STEP 4

Slide support connectors (**D**) onto lower vertical supports. Secure each with x2 M4 screws (**E**) and tighten with a Phillips screwdriver.



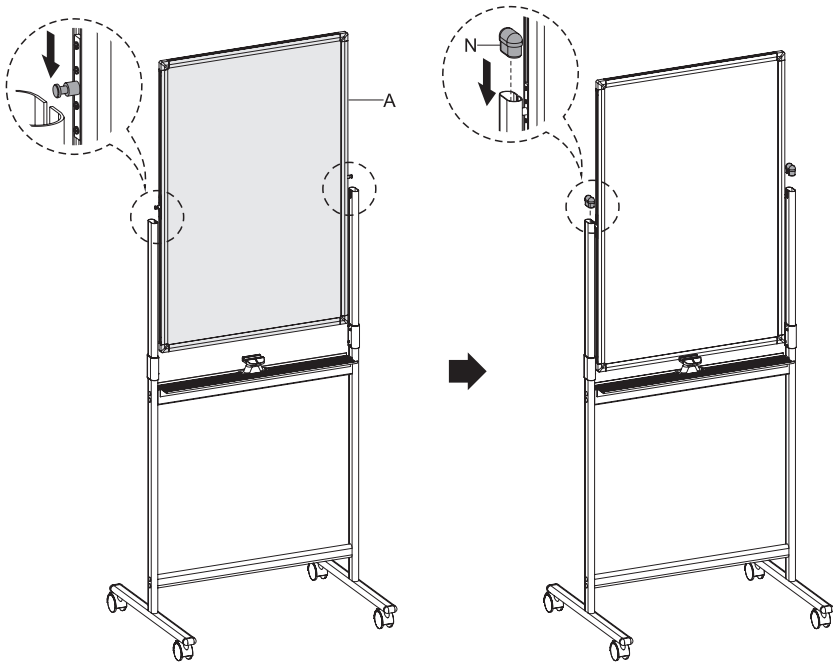
STEP 5

Insert upper vertical supports (**C**) into support connectors. Secure each with x2 M4 screws (**E**) and tighten with a Phillips screwdriver.



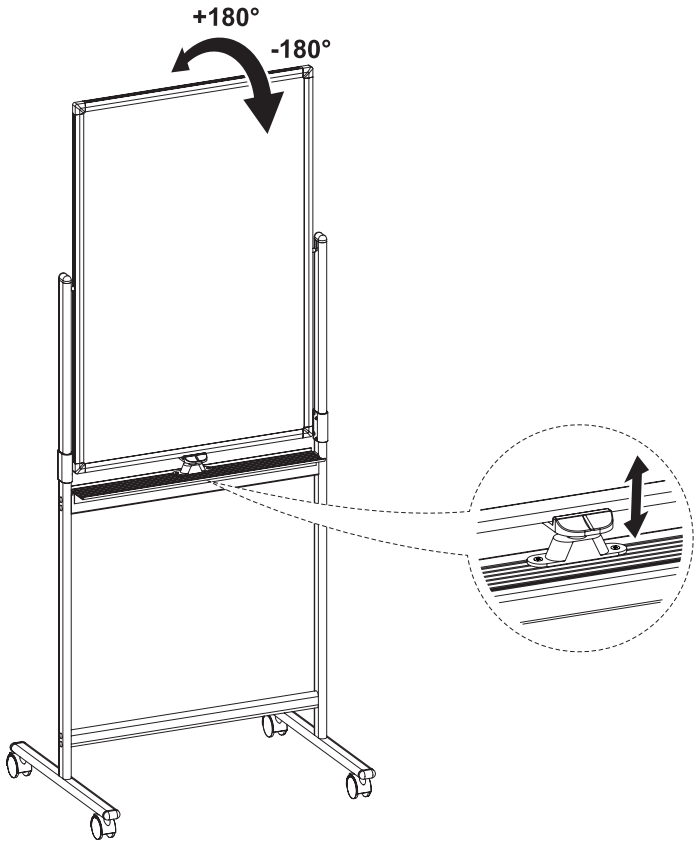
STEP 6

Slide board **(A)** into frame. Cover open ends of vertical supports using pole caps **(N)**.



STEP 7

Push the rotation lock down to release and rotate the board.



CLEANING TIP: A mild dish washing liquid can be used with a soft cloth to clean the surface.



Open **Monday - Friday 7:00am - 7:00pm CST**, our dedicated support team can offer immediate assistance with rapid response times. If any parts are received damaged or defective, please contact us. We are happy to replace parts to ensure you have a fully functioning product.


 help@vivo-us.com

AVG. RESPONSE TIME (*within office hrs*): **1HR 8M**

- 23% within < 15m
- 38% within < 30m
- 61% within < 1hr
- 83% within < 2hr
- 92% within < 3hr

 www.vivo-us.com
Chat live with an agent!

AVG. RESOLUTION TIME (*within office hrs*): **< 15 M**

 309-278-5303

AVG. RESOLUTION TIME (*within office hrs*): **5M 4S**